

- NOTES:**
- WKCD BOUNDARY** (indicated by a dashed line)
 - M+ MUSEUM BOUNDARY** (indicated by a blue line)
 - LYRIC THEATRE BOUNDARY** (indicated by a green line)
 - BOUNDARY OF UNDERPASS ROAD SERVING THE PLANNED WKCD** (indicated by a long-dashed line)
 - AREA HANDED OVER TO SUN HUNG KAI PROPERTIES** (indicated by a red line)
 - CONSTRUCTION AIR/NOISE MONITORING STATIONS** (indicated by a red 'X')

REMARKS 1:
THE AIR MONITORING STATION AM2B HAS BEEN RELOCATED TO THE ALTERNATIVE MONITORING STATION AM2 AT THE G/F OF HARBORSIDE ON 1 JUNE 2021

REMARKS 2:
THE SITE P32 (DELINEATED IN RED) WAS HANDED OVER TO AST DEVELOPER ON 31 JANUARY 2023.

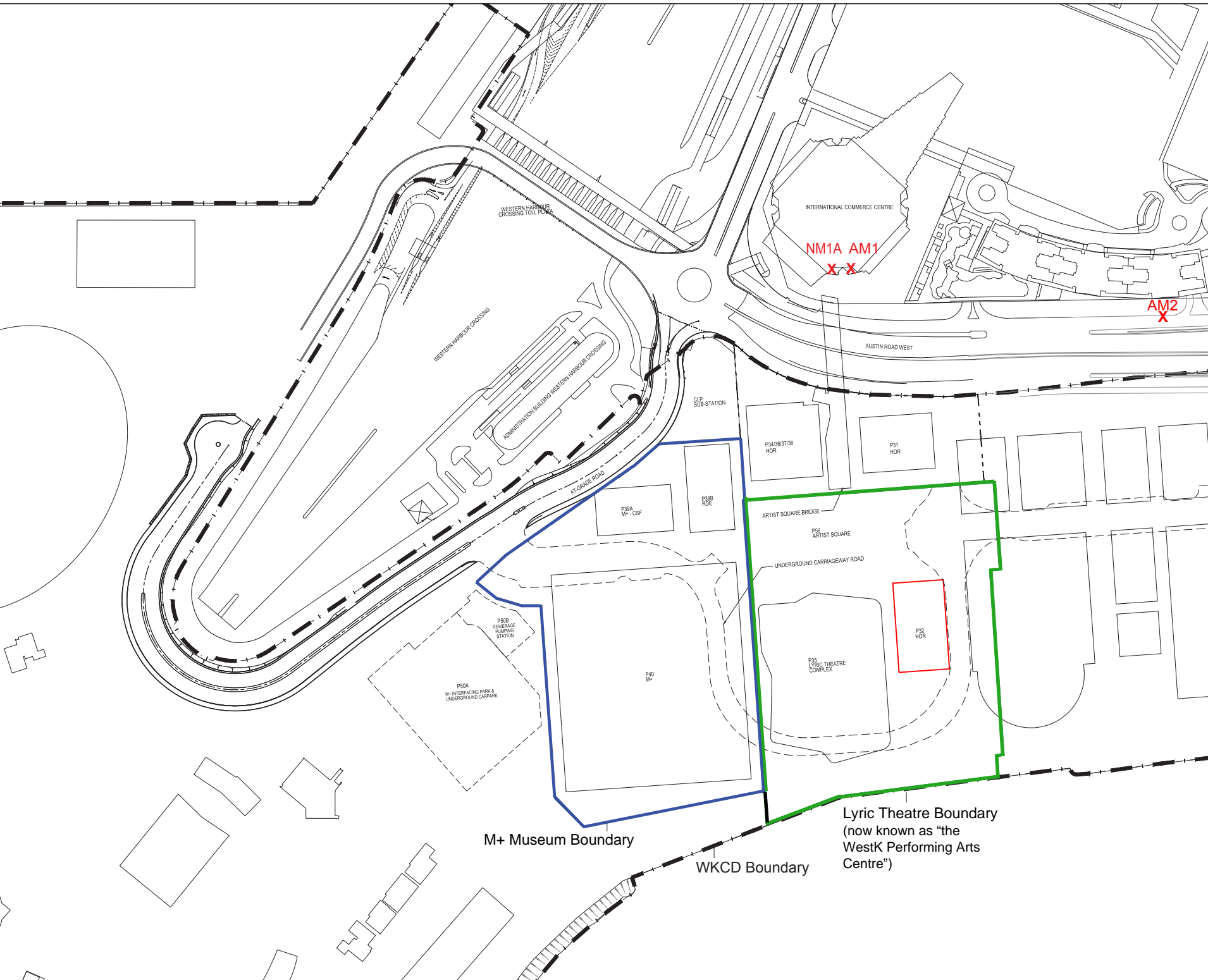
REV.	DATE	DESCRIPTION	INITIAL

JOB TITLE: M+ MUSEUM FOR VISUAL CULTURE (MAIN CONTRACT WORKS) & LYRIC THEATRE COMPLEX

DRAWING TITLE: PROPOSED LOCATIONS OF CONSTRUCTION AIR/NOISE MONITORING STATIONS

SCALE	1:100	PRINTED	A1
CHECKED	DATE		
APPROVED	DATE		
DRAWN	DATE		
CONTRACT NO.			
DRAWING NO.			REV.
			XA
CAD REF NAME: XXXXX-AUT-PMIS-DWG-P001-000-000-XXX.dwg			
AUTHORITY			

westKowloon
西九文化區



M+ Museum Boundary

WKCD Boundary

Lyric Theatre Boundary
(now known as "the WestK Performing Arts Centre")

NM1A AM1
X X

AM2
X

P32
HOR

INTERNATIONAL COMMERCE CENTRE

AUSTIN ROAD WEST

P54/36/37/38
HOR

P31
HOR

P39A
M+ CSF

P38B
RDE

ARTIST SQUARE BRIDGE

P58
ARTIST SQUARE

UNDERGROUND CARRIAGEWAY ROAD

P55
LYRIC THEATRE COMPLEX

P40
M+

P50B
SEWERAGE PUMPING STATION

P50A
M+ INTERAZING PARK & UNDERGROUND CARPARK

CLP SUB-STATION

ADMINISTRATION BUILDING WESTERN HARBOUR CROSSING

WESTERN HARBOUR CROSSING

WESTERN HARBOUR CROSSING TOLL PLAZA

A7 GRADE ROAD