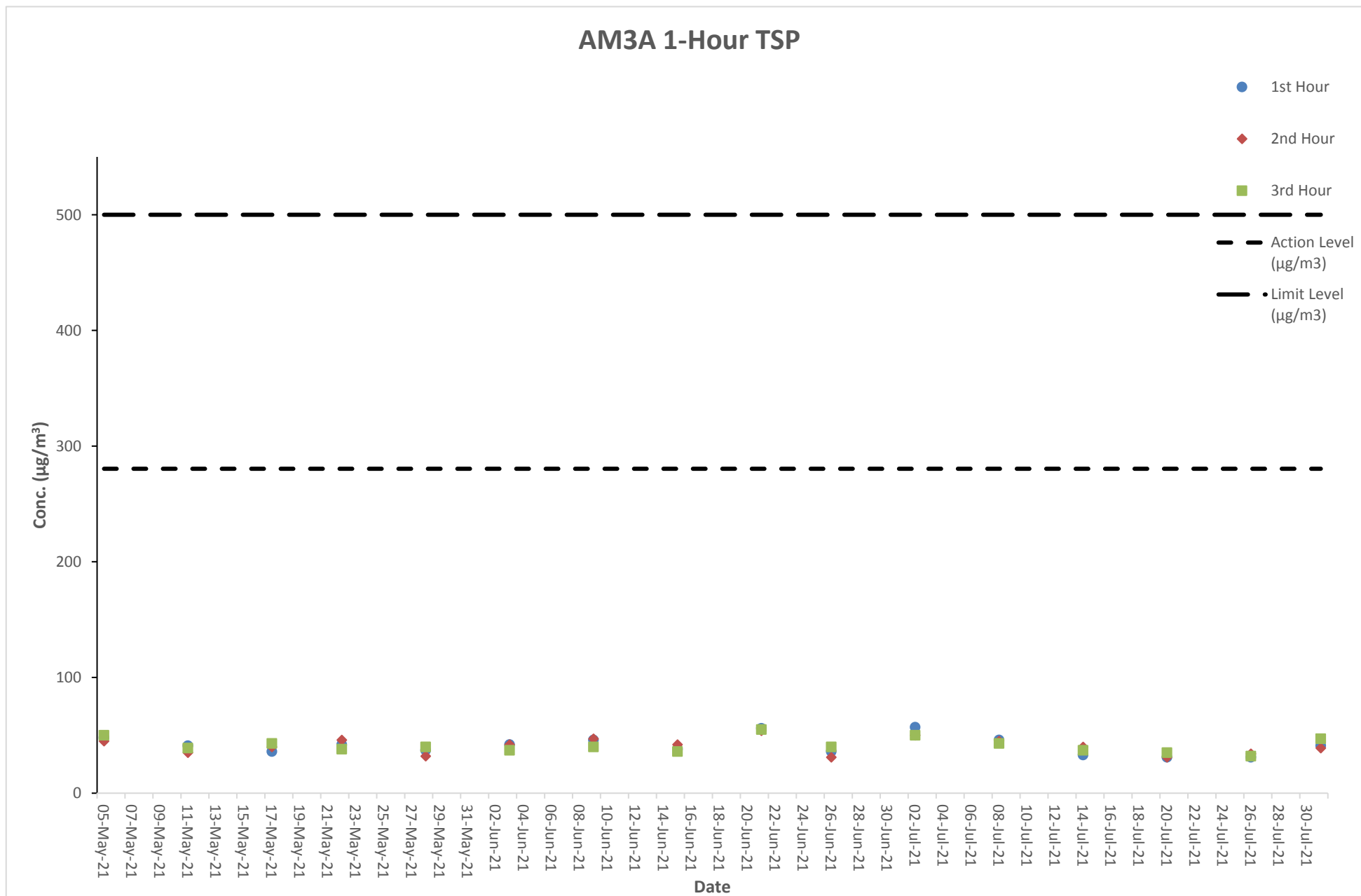


**Air Quality Monitoring Result at Station AM3A (1-hour TSP)**

Date	Weather Condition	Time	Conc. ( $\mu\text{g}/\text{m}^3$ )			Action Level ( $\mu\text{g}/\text{m}^3$ )	Limit Level ( $\mu\text{g}/\text{m}^3$ )
			1 <sup>st</sup> Hour	2 <sup>nd</sup> Hour	3 <sup>rd</sup> Hour		
05-May-21	Cloudy	8:01 - 11:01	48	45	50	280.4	500
11-May-21	Cloudy	14:03 - 17:03	41	35	39	280.4	500
17-May-21	Fine	8:02 - 11:02	36	40	43	280.4	500
22-May-21	Cloudy	14:05 - 17:05	42	46	38	280.4	500
28-May-21	Fine	8:10 - 11:10	37	32	40	280.4	500
03-Jun-21	Fine	14:02 - 17:02	42	42	37	280.4	500
09-Jun-21	Cloudy	8:01 - 11:01	46	47	40	280.4	500
15-Jun-21	Cloudy	14:01 - 17:01	38	42	36	280.4	500
21-Jun-21	Cloudy	8:03 - 11:03	56	54	55	280.4	500
26-Jun-21	Cloudy	14:00 - 17:00	36	31	40	280.4	500
02-Jul-21	Fine	8:02 - 11:02	57	50	50	280.4	500
08-Jul-21	Cloudy	14:07 - 17:07	46	45	43	280.4	500
14-Jul-21	Cloudy	8:10 - 11:10	33	40	37	280.4	500
20-Jul-21	Cloudy	14:15 - 17:15	31	31	35	280.4	500
26-Jul-21	Fine	8:12 - 11:12	31	34	32	280.4	500
31-Jul-21	Cloudy	14:09 - 17:09	41	39	47	280.4	500

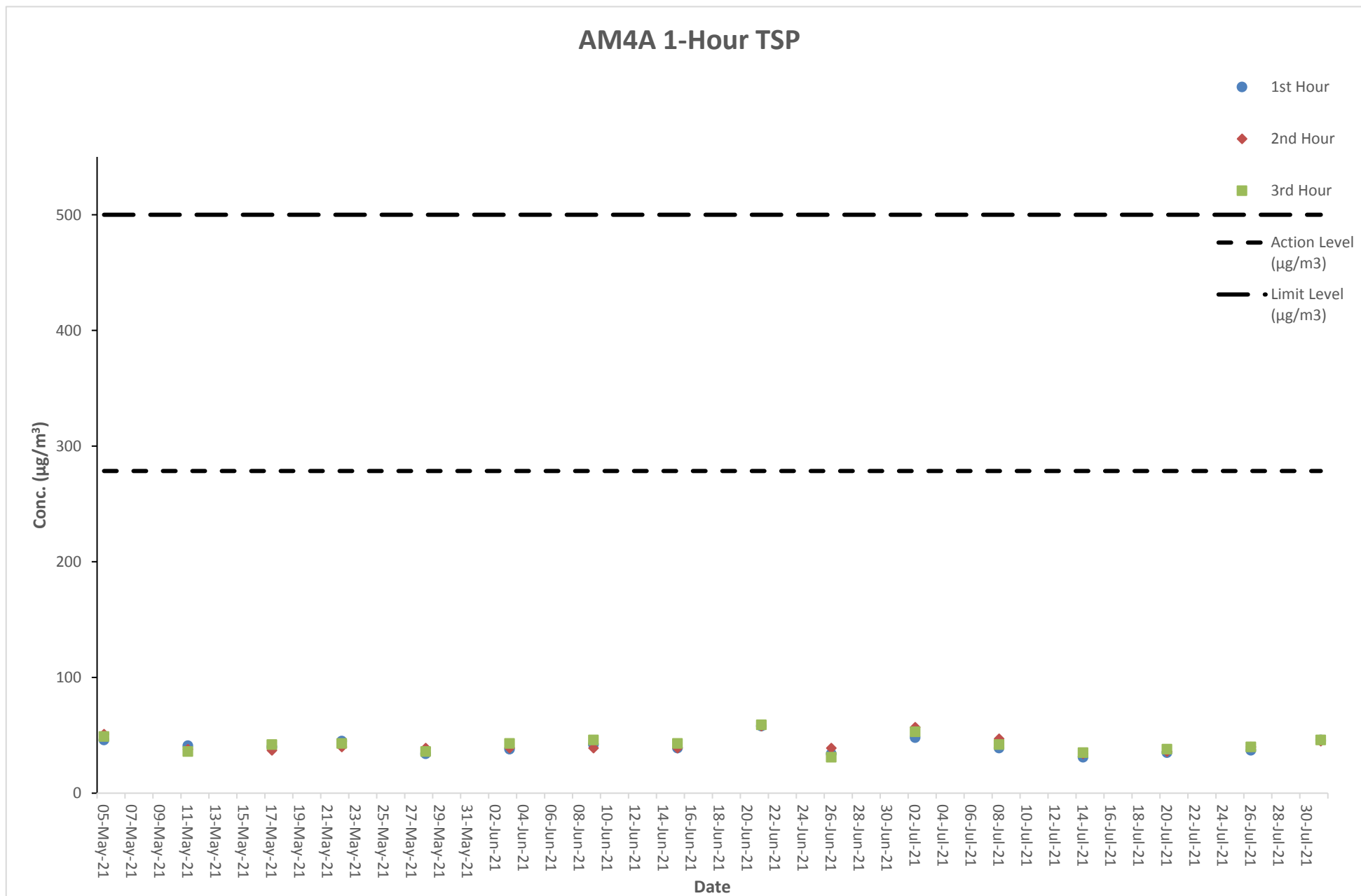
# Graphical Presentation of Air Quality Monitoring Result at Station AM3A (1-hour TSP)



**Air Quality Monitoring Result at Station AM4A (1-hour TSP)**

Date	Weather Condition	Time	Conc. ( $\mu\text{g}/\text{m}^3$ )			Action Level ( $\mu\text{g}/\text{m}^3$ )	Limit Level ( $\mu\text{g}/\text{m}^3$ )
			1 <sup>st</sup> Hour	2 <sup>nd</sup> Hour	3 <sup>rd</sup> Hour		
05-May-21	Cloudy	8:09 - 11:09	46	51	49	278.5	500
11-May-21	Cloudy	14:11 - 17:11	41	38	36	278.5	500
17-May-21	Fine	8:10 - 11:10	40	37	42	278.5	500
22-May-21	Cloudy	14:13 - 17:13	45	40	43	278.5	500
28-May-21	Fine	8:18 - 11:18	34	39	36	278.5	500
03-Jun-21	Fine	14:10 - 17:10	38	39	43	278.5	500
09-Jun-21	Cloudy	8:09 - 11:09	42	39	46	278.5	500
15-Jun-21	Cloudy	14:09 - 17:09	39	39	43	278.5	500
21-Jun-21	Cloudy	8:11 - 11:11	58	58	59	278.5	500
26-Jun-21	Cloudy	14:08 - 17:08	34	39	31	278.5	500
02-Jul-21	Fine	8:10 - 11:10	48	57	53	278.5	500
08-Jul-21	Cloudy	14:15 - 17:15	39	47	42	278.5	500
14-Jul-21	Cloudy	8:18 - 11:18	31	34	35	278.5	500
20-Jul-21	Cloudy	14:23 - 17:23	35	36	38	278.5	500
26-Jul-21	Fine	8:20 - 11:20	37	40	40	278.5	500
31-Jul-21	Cloudy	14:17 - 17:17	46	45	46	278.5	500

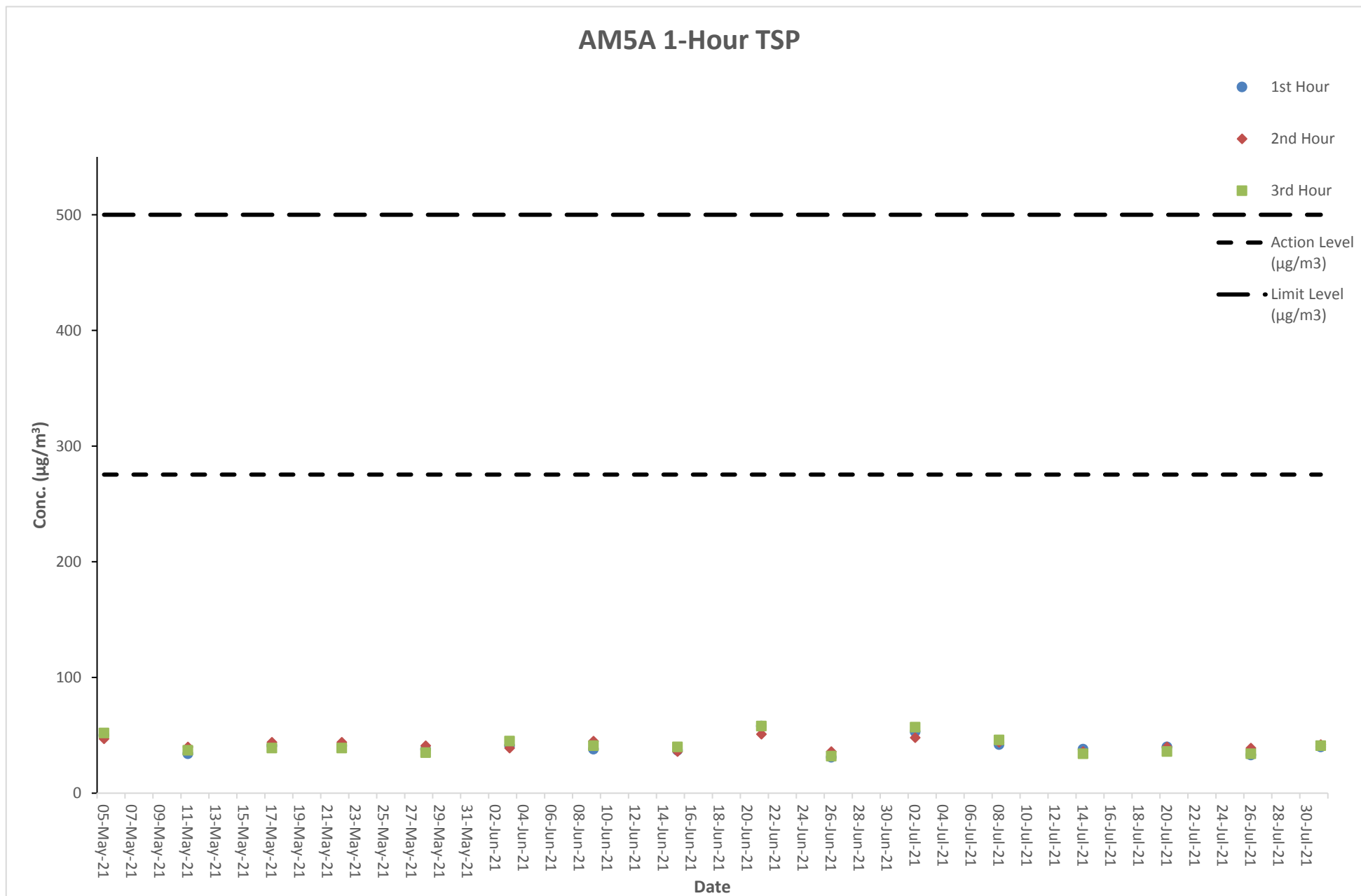
# Graphical Presentation of Air Quality Monitoring Result at Station AM4A (1-hour TSP)



**Air Quality Monitoring Result at Station AM5A (1-hour TSP)**

Date	Weather Condition	Time	Conc. ( $\mu\text{g}/\text{m}^3$ )			Action Level ( $\mu\text{g}/\text{m}^3$ )	Limit Level ( $\mu\text{g}/\text{m}^3$ )
			1 <sup>st</sup> Hour	2 <sup>nd</sup> Hour	3 <sup>rd</sup> Hour		
05-May-21	Cloudy	8:24 - 11:24	50	47	52	275.4	500
11-May-21	Cloudy	14:28 - 17:28	34	40	37	275.4	500
17-May-21	Fine	8:25 - 11:25	41	44	39	275.4	500
22-May-21	Cloudy	14:30 - 17:30	41	44	39	275.4	500
28-May-21	Fine	8:33 - 11:33	38	41	35	275.4	500
03-Jun-21	Fine	14:25 - 17:25	41	39	45	275.4	500
09-Jun-21	Cloudy	8:26 - 11:26	38	45	41	275.4	500
15-Jun-21	Cloudy	14:24 - 17:24	37	36	40	275.4	500
21-Jun-21	Cloudy	8:28 - 11:28	58	51	58	275.4	500
26-Jun-21	Cloudy	14:23 - 17:23	31	36	32	275.4	500
02-Jul-21	Fine	8:25 - 11:25	53	48	57	275.4	500
08-Jul-21	Cloudy	14:32 - 17:32	42	44	46	275.4	500
14-Jul-21	Cloudy	8:33 - 11:33	38	36	34	275.4	500
20-Jul-21	Cloudy	14:40 - 17:40	40	40	36	275.4	500
26-Jul-21	Fine	8:35 - 11:35	33	39	34	275.4	500
31-Jul-21	Cloudy	14:25 - 17:25	40	42	41	275.4	500

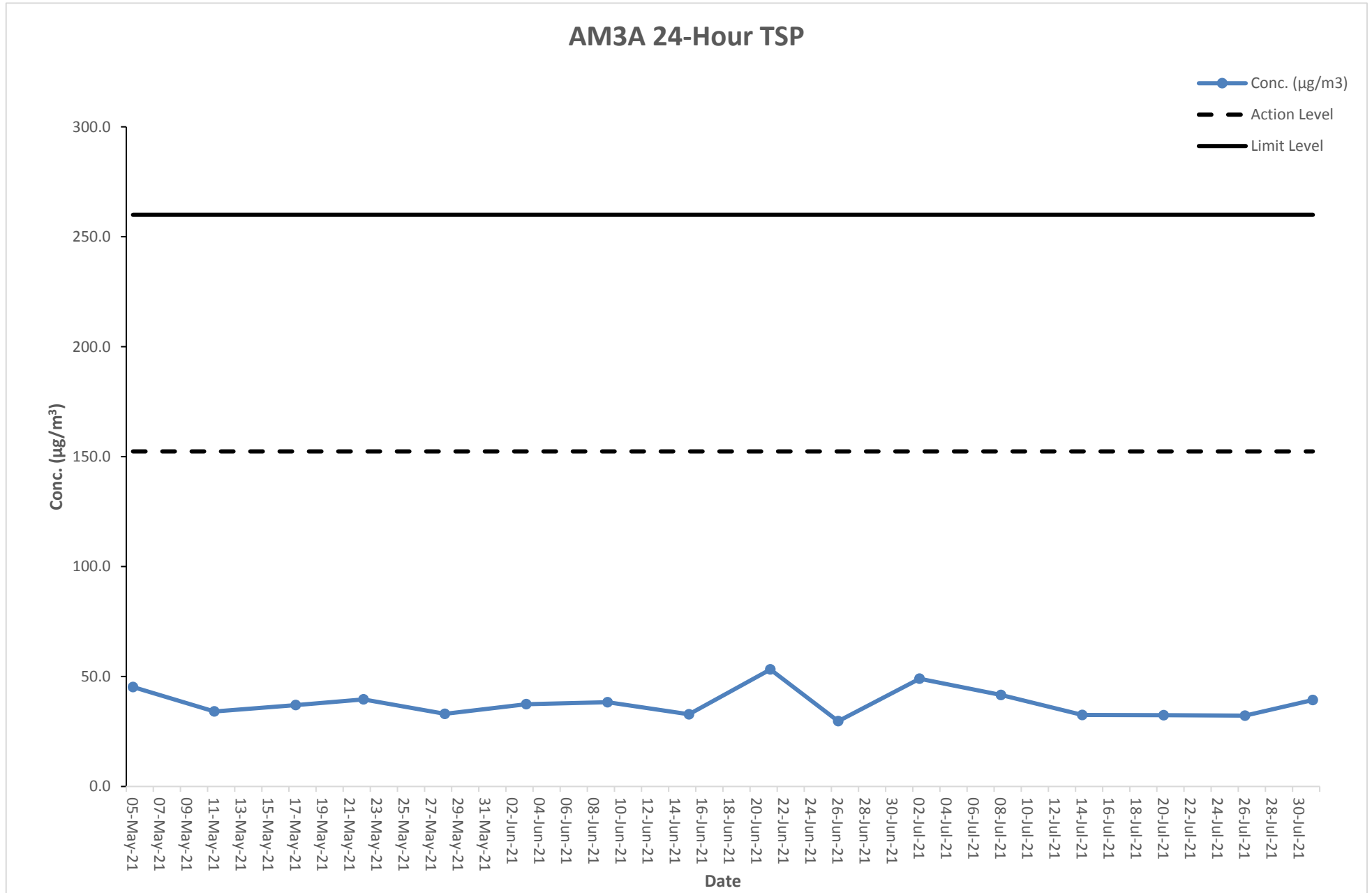
# Graphical Presentation of Air Quality Monitoring Result at Station AM5A (1-hour TSP)



### Air Quality Monitoring Result at Station AM3A (24-hour TSP)

Start		Finish		Filter Weight (g)		Elapsed Time Reading		Sampling Time (hrs)	Flow Rate (m <sup>3</sup> /min)			Conc. (µg/m <sup>3</sup> )	Weather Condition	Action Level	Limit Level
Date	Time	Date	Time	Initial	Final	Initial	Final		Initial	Final	Average				
05-May-21	10:00	06-May-21	10:00	2.8061	2.8789	1940.8	1964.8	24	1.12	1.12	1.12	45.2	Cloudy	152.4	260
11-May-21	10:00	12-May-21	10:00	2.8019	2.8567	1964.8	1988.8	24	1.12	1.12	1.12	34.1	Fine	152.4	260
17-May-21	10:00	18-May-21	10:00	2.8041	2.8636	1988.8	2012.8	24	1.12	1.12	1.12	37.0	Sunny	152.4	260
22-May-21	10:00	23-May-21	10:00	2.8029	2.8667	2012.8	2036.8	24	1.12	1.12	1.12	39.6	Cloudy	152.4	260
28-May-21	10:00	29-May-21	10:00	2.8077	2.8608	2036.8	2060.8	24	1.12	1.12	1.12	33.0	Sunny	152.4	260
03-Jun-21	10:00	04-Jun-21	10:00	2.8077	2.8679	2060.8	2084.8	24	1.12	1.12	1.12	37.4	Sunny	152.4	260
09-Jun-21	10:00	10-Jun-21	10:00	2.8075	2.8691	2084.8	2108.8	24	1.12	1.12	1.12	38.3	Rainy	152.4	260
15-Jun-21	10:00	16-Jun-21	10:00	2.8090	2.8617	2108.8	2132.8	24	1.12	1.12	1.12	32.8	Rainy	152.4	260
21-Jun-21	10:00	22-Jun-21	10:00	2.8069	2.8926	2132.8	2156.8	24	1.12	1.12	1.12	53.2	Cloudy	152.4	260
26-Jun-21	10:00	27-Jun-21	10:00	2.8051	2.8528	2156.8	2180.8	24	1.12	1.12	1.12	29.7	Rainy	152.4	260
02-Jul-21	10:00	03-Jul-21	10:00	2.8056	2.8845	2180.8	2204.8	24	1.12	1.12	1.12	49.0	Sunny	152.4	260
08-Jul-21	10:00	09-Jul-21	10:00	2.8042	2.8712	2204.8	2228.8	24	1.12	1.12	1.12	41.6	Cloudy	152.4	260
14-Jul-21	10:00	15-Jul-21	10:00	2.8023	2.8546	2228.8	2252.8	24	1.12	1.12	1.12	32.5	Cloudy	152.4	260
20-Jul-21	10:00	21-Jul-21	10:00	2.8061	2.8583	2252.8	2276.8	24	1.12	1.12	1.12	32.4	Rainy	152.4	260
26-Jul-21	10:00	27-Jul-21	10:00	2.8048	2.8566	2276.8	2300.8	24	1.12	1.12	1.12	32.2	Fine	152.4	260
31-Jul-21	10:00	01-Aug-21	10:00	2.8065	2.8698	2300.8	2324.8	24	1.12	1.12	1.12	39.3	Rainy	152.4	260

# Graphical Presentation of Air Quality Monitoring Result at Station AM3A (24-hour TSP)

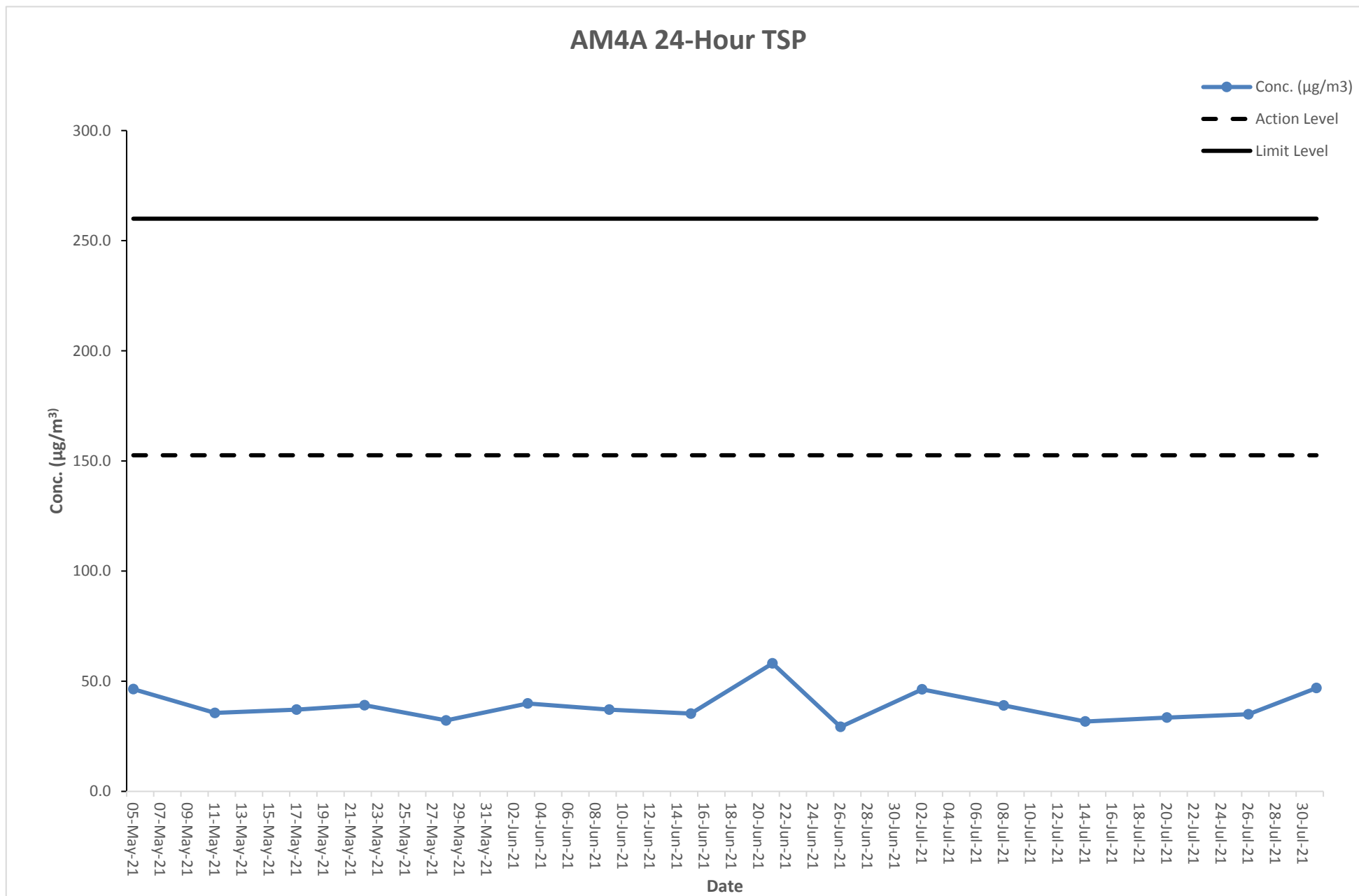




### Air Quality Monitoring Result at Station AM4A (24-hour TSP)

Start		Finish		Filter Weight (g)		Elapsed Time Reading		Sampling Time (hrs)	Flow Rate (m <sup>3</sup> /min)			Conc. (µg/m <sup>3</sup> )	Weather Condition	Action Level	Limit Level
Date	Time	Date	Time	Initial	Final	Initial	Final		Initial	Final	Average				
05-May-21	10:00	06-May-21	10:00	2.8065	2.8813	2360.4	2384.4	24	1.12	1.12	1.12	46.4	Cloudy	152.6	260
11-May-21	10:00	12-May-21	10:00	2.8040	2.8613	2384.4	2408.4	24	1.12	1.12	1.12	35.6	Fine	152.6	260
17-May-21	10:00	18-May-21	10:00	2.8082	2.8680	2408.4	2432.4	24	1.12	1.12	1.12	37.1	Sunny	152.6	260
22-May-21	10:00	23-May-21	10:00	2.8038	2.8667	2432.4	2456.4	24	1.12	1.12	1.12	39.1	Cloudy	152.6	260
28-May-21	10:00	29-May-21	10:00	2.8060	2.8578	2456.4	2480.4	24	1.12	1.12	1.12	32.2	Sunny	152.6	260
03-Jun-21	10:00	04-Jun-21	10:00	2.8054	2.8696	2480.4	2504.4	24	1.12	1.12	1.12	39.9	Sunny	152.6	260
09-Jun-21	10:00	10-Jun-21	10:00	2.8038	2.8636	2504.4	2528.4	24	1.12	1.12	1.12	37.1	Rainy	152.6	260
15-Jun-21	10:00	16-Jun-21	10:00	2.8016	2.8584	2528.4	2552.4	24	1.12	1.12	1.12	35.3	Rainy	152.6	260
21-Jun-21	10:00	22-Jun-21	10:00	2.8040	2.8975	2552.4	2576.4	24	1.12	1.12	1.12	58.1	Cloudy	152.6	260
26-Jun-21	10:00	27-Jun-21	10:00	2.8037	2.8508	2576.4	2600.4	24	1.12	1.12	1.12	29.3	Rainy	152.6	260
02-Jul-21	10:00	03-Jul-21	10:00	2.8050	2.8794	2600.4	2624.4	24	1.12	1.12	1.12	46.3	Sunny	152.6	260
08-Jul-21	10:00	09-Jul-21	10:00	2.8071	2.8699	2624.4	2648.4	24	1.12	1.12	1.12	39.0	Cloudy	152.6	260
14-Jul-21	10:00	15-Jul-21	10:00	2.8058	2.8568	2648.4	2672.4	24	1.12	1.12	1.12	31.7	Cloudy	152.6	260
20-Jul-21	10:00	21-Jul-21	10:00	2.8065	2.8605	2672.4	2696.4	24	1.12	1.12	1.12	33.5	Rainy	152.6	260
26-Jul-21	10:00	27-Jul-21	10:00	2.8040	2.8603	2696.4	2720.4	24	1.12	1.12	1.12	35.0	Fine	152.6	260
31-Jul-21	10:00	01-Aug-21	10:00	2.8068	2.8823	2720.4	2744.4	24	1.12	1.12	1.12	46.9	Rainy	152.6	260

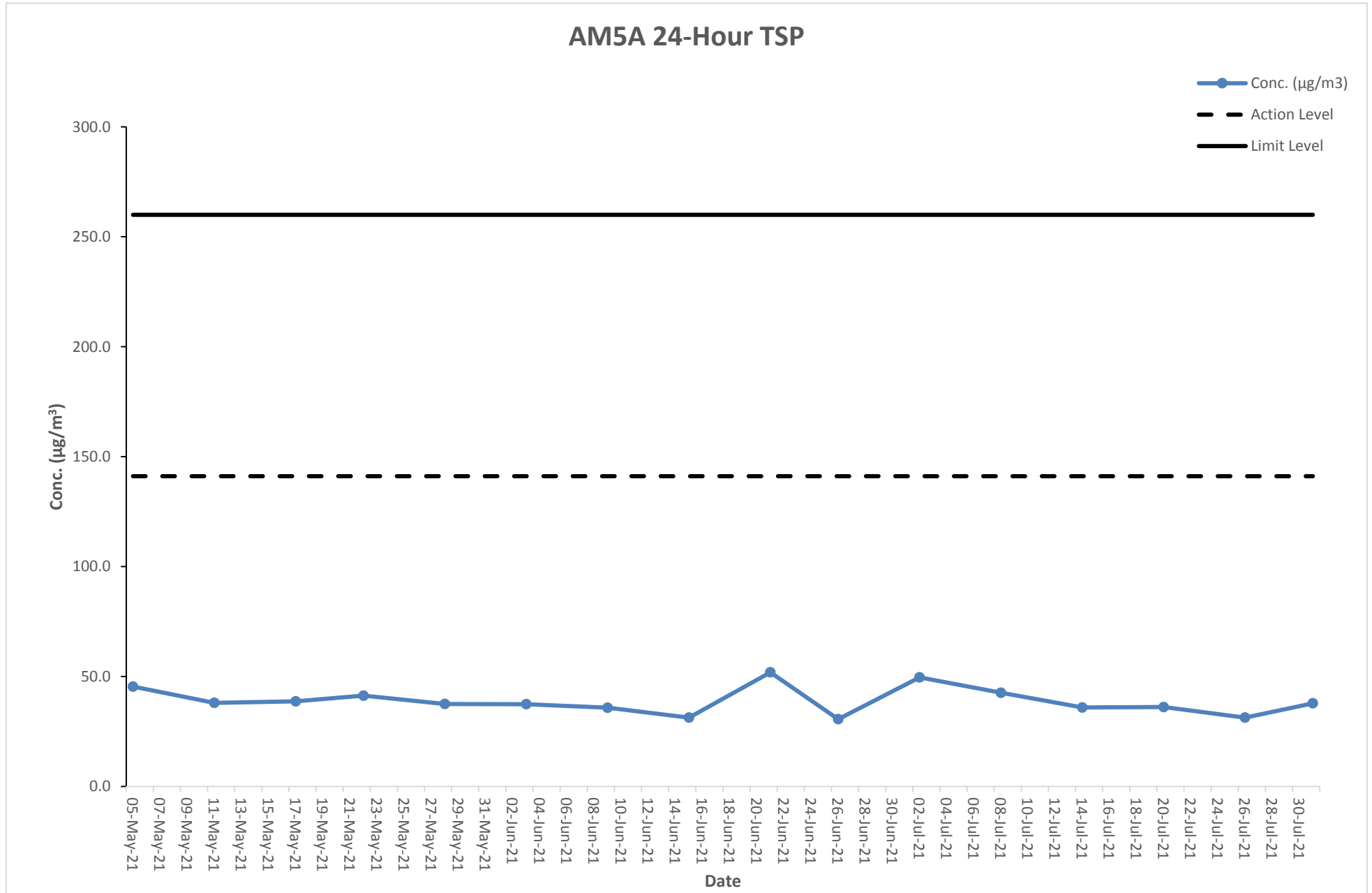
# Graphical Presentation of Air Quality Monitoring Result at Station AM4A (24-hour TSP)



**Air Quality Monitoring Result at Station AM5A (24-hour TSP)**

Start		Finish		Filter Weight (g)		Elapsed Time Reading		Sampling Time (hrs)	Flow Rate (m <sup>3</sup> /min)			Conc. (µg/m <sup>3</sup> )	Weather Condition	Action Level	Limit Level
Date	Time	Date	Time	Initial	Final	Initial	Final		Initial	Final	Average				
05-May-21	10:00	06-May-21	10:00	2.8014	2.8745	2500.6	2524.6	24	1.12	1.12	1.12	45.4	Cloudy	141.1	260
11-May-21	10:00	12-May-21	10:00	2.8071	2.8683	2524.6	2548.6	24	1.12	1.12	1.12	38.0	Fine	141.1	260
17-May-21	10:00	18-May-21	10:00	2.8031	2.8654	2548.6	2572.6	24	1.12	1.12	1.12	38.7	Sunny	141.1	260
22-May-21	10:00	23-May-21	10:00	2.8085	2.8749	2572.6	2596.6	24	1.12	1.12	1.12	41.3	Cloudy	141.1	260
28-May-21	10:00	29-May-21	10:00	2.8031	2.8635	2596.6	2620.6	24	1.12	1.12	1.12	37.5	Sunny	141.1	260
03-Jun-21	10:00	04-Jun-21	10:00	2.8074	2.8676	2620.6	2644.6	24	1.12	1.12	1.12	37.4	Sunny	141.1	260
09-Jun-21	10:00	10-Jun-21	10:00	2.8052	2.8628	2644.6	2668.6	24	1.12	1.12	1.12	35.8	Rainy	141.1	260
15-Jun-21	10:00	16-Jun-21	10:00	2.8042	2.8545	2668.6	2692.6	24	1.12	1.12	1.12	31.3	Rainy	141.1	260
21-Jun-21	10:00	22-Jun-21	10:00	2.8028	2.8863	2692.6	2716.6	24	1.12	1.12	1.12	51.9	Cloudy	141.1	260
26-Jun-21	10:00	27-Jun-21	10:00	2.8013	2.8506	2716.6	2740.6	24	1.12	1.12	1.12	30.6	Rainy	141.1	260
02-Jul-21	10:00	03-Jul-21	10:00	2.8049	2.8847	2740.6	2764.6	24	1.12	1.12	1.12	49.6	Sunny	141.1	260
08-Jul-21	10:00	09-Jul-21	10:00	2.8014	2.8699	2764.6	2788.6	24	1.12	1.12	1.12	42.6	Cloudy	141.1	260
14-Jul-21	10:00	15-Jul-21	10:00	2.8041	2.8619	2788.6	2812.6	24	1.12	1.12	1.12	35.9	Cloudy	141.1	260
20-Jul-21	10:00	21-Jul-21	10:00	2.8040	2.8621	2812.6	2836.6	24	1.12	1.12	1.12	36.1	Rainy	141.1	260
26-Jul-21	10:00	27-Jul-21	10:00	2.8013	2.8516	2836.6	2860.6	24	1.12	1.12	1.12	31.3	Fine	141.1	260
31-Jul-21	10:00	01-Aug-21	10:00	2.8021	2.8630	2860.6	2884.6	24	1.12	1.12	1.12	37.8	Rainy	141.1	260

# Graphical Presentation of Air Quality Monitoring Result at Station AM5A (24-hour TSP)



**Noise Monitoring Result at Station NM2A**

Date	Time	Measured L10 dB(A)	Measured L90 dB(A)	Leq (30 min.) dB(A)
05-May-21	8:31	64.1	55.9	58.6
05-May-21	8:36	62.4	57.5	
05-May-21	8:41	65.2	57.1	
05-May-21	8:46	63.8	57.0	
05-May-21	8:51	63.2	56.6	
05-May-21	8:56	63.1	57.6	
11-May-21	14:33	63.6	55.5	58.8
11-May-21	14:38	63.7	55.6	
11-May-21	14:43	63.1	55.5	
11-May-21	14:48	63.3	56.5	
11-May-21	14:53	64.7	57.3	
11-May-21	14:58	64.0	55.1	
17-May-21	8:32	62.4	58.0	59.0
17-May-21	8:37	63.2	55.5	
17-May-21	8:42	63.7	56.9	
17-May-21	8:47	62.5	55.8	
17-May-21	8:52	62.9	55.6	
17-May-21	8:57	64.2	55.7	
22-May-21	14:35	65.1	56.3	59.7
22-May-21	14:40	64.8	56.9	
22-May-21	14:45	62.9	55.1	
22-May-21	14:50	62.6	57.1	
22-May-21	14:55	63.6	58.0	
22-May-21	15:00	62.6	57.7	
28-May-21	8:40	62.6	57.8	58.7
28-May-21	8:45	63.7	55.5	
28-May-21	8:50	62.5	55.7	
28-May-21	8:55	63.3	57.0	
28-May-21	9:00	62.4	56.1	
28-May-21	9:05	62.7	55.5	
03-Jun-21	14:32	62.3	56.5	59.4
03-Jun-21	14:37	64.4	55.9	
03-Jun-21	14:42	64.0	55.3	
03-Jun-21	14:47	64.1	55.0	
03-Jun-21	14:52	62.6	54.1	
03-Jun-21	14:57	64.2	54.6	
09-Jun-21	8:31	63.4	54.2	58.9
09-Jun-21	8:36	64.3	55.4	
09-Jun-21	8:41	62.4	56.1	
09-Jun-21	8:46	64.5	56.3	
09-Jun-21	8:51	62.5	55.9	
09-Jun-21	8:56	62.9	54.5	
15-Jun-21	14:31	63.7	55.7	58.6
15-Jun-21	14:36	64.4	56.0	
15-Jun-21	14:41	64.0	56.8	
15-Jun-21	14:46	64.0	56.8	
15-Jun-21	14:51	64.3	54.5	
15-Jun-21	14:56	62.6	55.3	
21-Jun-21	8:33	62.1	54.1	59.0
21-Jun-21	8:38	62.6	54.6	
21-Jun-21	8:43	62.7	55.4	
21-Jun-21	8:48	64.1	54.8	
21-Jun-21	8:53	63.4	56.0	
21-Jun-21	8:58	63.0	54.7	
26-Jun-21	14:30	63.1	55.3	58.6
26-Jun-21	14:35	63.8	56.1	
26-Jun-21	14:40	63.9	55.9	
26-Jun-21	14:45	64.5	56.6	
26-Jun-21	14:50	62.7	56.7	
26-Jun-21	14:55	64.0	54.3	

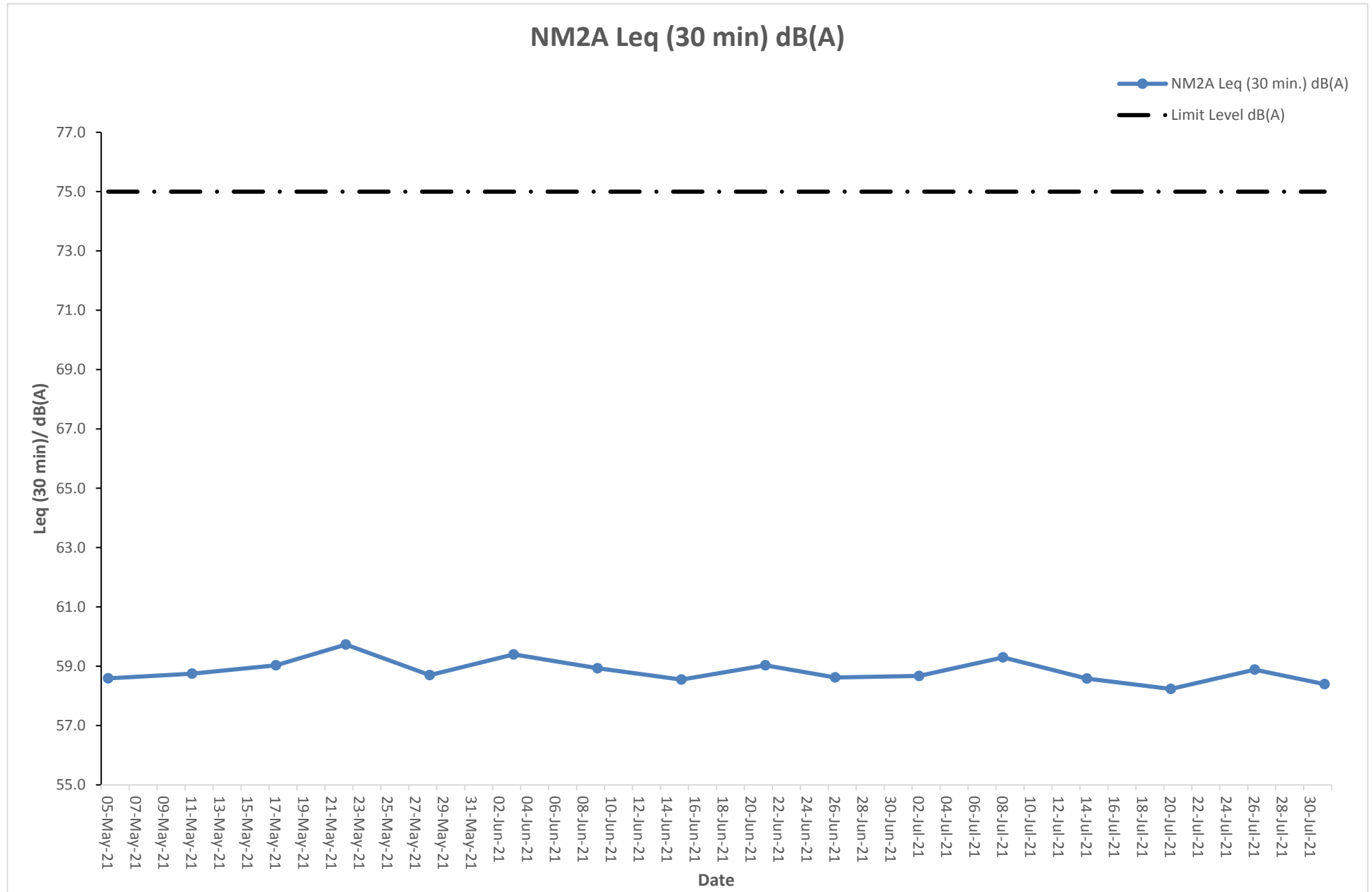
### Noise Monitoring Result at Station NM2A

Date	Time	Measured L10 dB(A)	Measured L90 dB(A)	Leq (30 min.) dB(A)
02-Jul-21	8:32	62.3	54.7	58.7
02-Jul-21	8:37	64.8	55.0	
02-Jul-21	8:42	63.1	56.7	
02-Jul-21	8:47	62.8	54.5	
02-Jul-21	8:52	62.6	54.1	
02-Jul-21	8:57	63.4	56.7	
08-Jul-21	14:37	63.3	54.4	59.3
08-Jul-21	14:42	63.8	55.6	
08-Jul-21	14:47	64.8	54.3	
08-Jul-21	14:52	62.6	56.6	
08-Jul-21	14:57	62.2	55.6	
08-Jul-21	15:02	62.1	54.8	
14-Jul-21	8:40	64.9	54.9	58.6
14-Jul-21	8:45	62.9	54.7	
14-Jul-21	8:50	63.1	56.5	
14-Jul-21	8:55	64.7	55.1	
14-Jul-21	9:00	64.2	55.6	
14-Jul-21	9:05	63.6	55.8	
20-Jul-21	14:45	63.9	55.7	58.2
20-Jul-21	14:50	64.6	55.6	
20-Jul-21	14:55	63.0	56.8	
20-Jul-21	15:00	64.5	55.0	
20-Jul-21	15:05	63.0	56.1	
20-Jul-21	15:10	62.5	54.4	
26-Jul-21	8:42	64.8	55.0	58.9
26-Jul-21	8:47	62.1	54.1	
26-Jul-21	8:52	63.5	56.5	
26-Jul-21	8:57	64.1	54.9	
26-Jul-21	9:02	62.9	55.4	
26-Jul-21	9:07	64.3	55.4	
31-Jul-21	14:09	63.6	55.8	58.4
31-Jul-21	14:14	62.2	56.6	
31-Jul-21	14:19	63.3	55.4	
31-Jul-21	14:24	62.8	56.5	
31-Jul-21	14:29	63.3	54.9	
31-Jul-21	14:34	64.9	54.3	



The station set-up of a façade measurement at station NM2A.

# Graphical Presentation of Noise Monitoring Result at Station NM2A



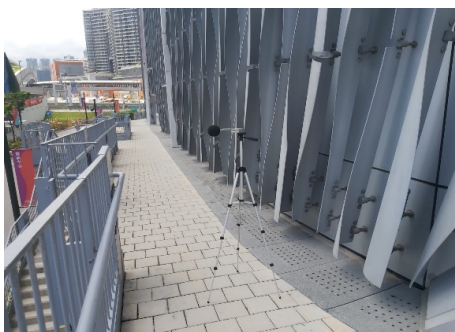
**Noise Monitoring Result at Station NM3A**

Date	Time	Measured L10 dB(A)	Measured L90 dB(A)	Leq (30 min.) dB(A)
05-May-21	10:01	73.9	67.1	69.9
05-May-21	10:06	73.7	69.3	
05-May-21	10:11	72.1	69.9	
05-May-21	10:16	74.4	68.3	
05-May-21	10:21	72.5	67.3	
05-May-21	10:26	72.1	67.2	
11-May-21	16:06	74.3	69.2	70.0
11-May-21	16:11	73.7	69.6	
11-May-21	16:16	72.3	68.0	
11-May-21	16:21	74.7	68.7	
11-May-21	16:26	72.4	67.4	
11-May-21	16:31	74.6	67.4	
17-May-21	10:02	74.7	67.5	68.8
17-May-21	10:07	72.6	68.2	
17-May-21	10:12	72.2	67.5	
17-May-21	10:17	72.1	67.5	
17-May-21	10:22	74.4	68.1	
17-May-21	10:27	73.4	68.9	
22-May-21	16:08	74.3	67.4	69.9
22-May-21	16:13	73.6	68.4	
22-May-21	16:18	73.6	69.1	
22-May-21	16:23	74.1	67.3	
22-May-21	16:28	74.4	68.2	
22-May-21	16:33	72.7	67.7	
28-May-21	10:10	74.0	70.0	70.2
28-May-21	10:15	74.3	68.4	
28-May-21	10:20	74.7	67.2	
28-May-21	10:25	72.1	69.2	
28-May-21	10:30	73.9	69.1	
28-May-21	10:35	72.8	68.0	
03-Jun-21	16:02	73.0	66.7	69.4
03-Jun-21	16:07	73.1	67.3	
03-Jun-21	16:12	74.1	66.6	
03-Jun-21	16:17	73.2	67.4	
03-Jun-21	16:22	73.5	66.5	
03-Jun-21	16:27	72.7	66.7	
09-Jun-21	10:04	72.2	65.2	70.1
09-Jun-21	10:09	73.5	66.9	
09-Jun-21	10:14	72.0	66.6	
09-Jun-21	10:19	72.4	66.6	
09-Jun-21	10:24	72.0	67.9	
09-Jun-21	10:29	72.1	65.0	
15-Jun-21	16:01	72.6	65.5	68.9
15-Jun-21	16:06	72.8	67.7	
15-Jun-21	16:11	71.7	65.1	
15-Jun-21	16:16	71.4	65.5	
15-Jun-21	16:21	73.1	66.3	
15-Jun-21	16:26	73.2	66.5	
21-Jun-21	10:06	71.6	65.0	69.2
21-Jun-21	10:11	73.3	66.8	
21-Jun-21	10:16	74.0	65.0	
21-Jun-21	10:21	73.6	65.0	
21-Jun-21	10:26	72.2	66.4	
21-Jun-21	10:31	71.6	66.9	
26-Jun-21	16:00	72.8	66.5	68.8
26-Jun-21	16:05	73.5	65.0	
26-Jun-21	16:10	73.4	65.9	
26-Jun-21	16:15	73.5	67.7	
26-Jun-21	16:20	73.4	67.9	
26-Jun-21	16:25	72.0	65.3	



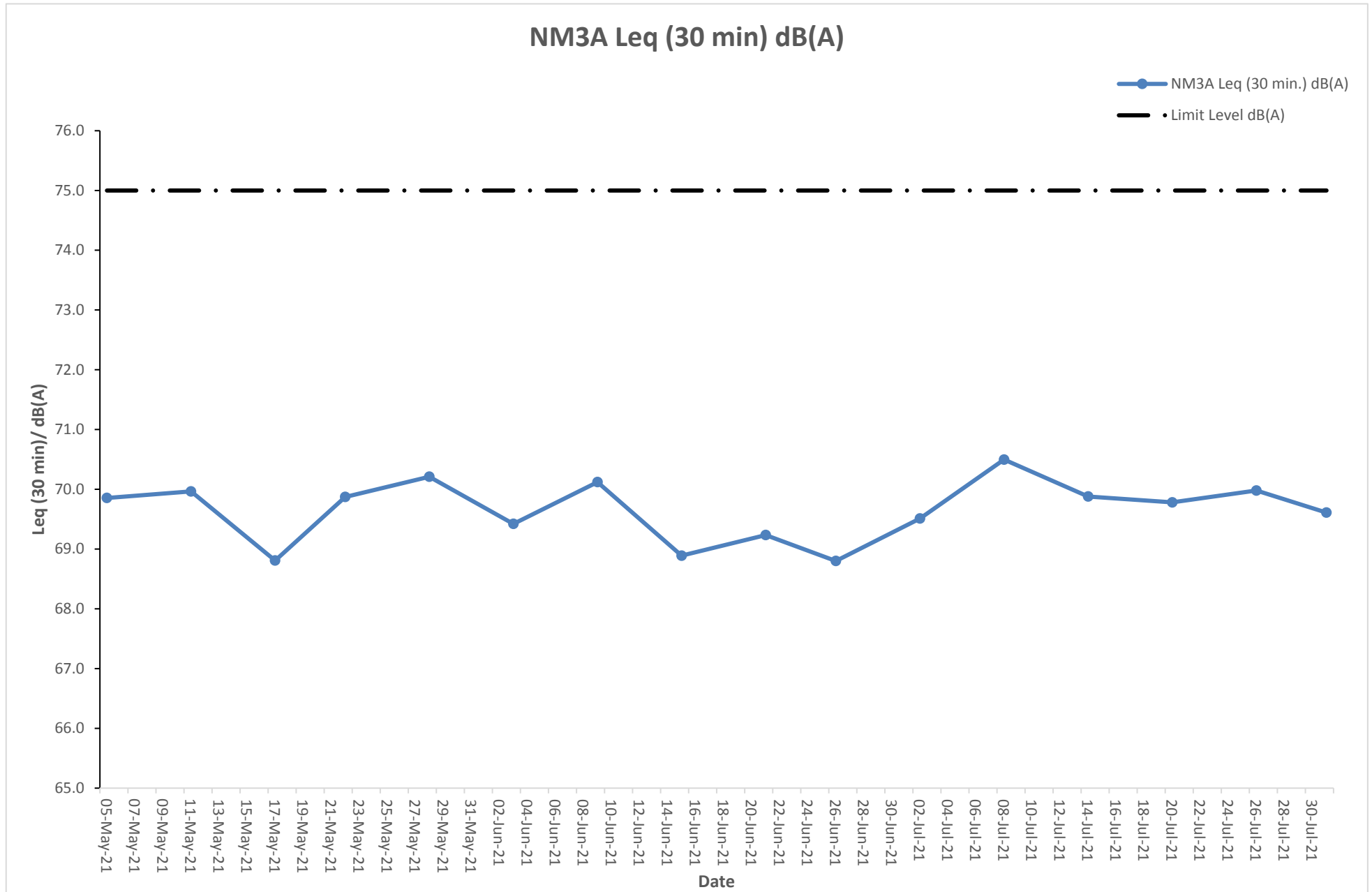
**Noise Monitoring Result at Station NM3A**

Date	Time	Measured L10 dB(A)	Measured L90 dB(A)	Leq (30 min.) dB(A)
02-Jul-21	10:02	72.1	66.0	69.5
02-Jul-21	10:07	72.2	66.9	
02-Jul-21	10:12	75.0	67.8	
02-Jul-21	10:17	74.2	65.5	
02-Jul-21	10:22	74.0	66.5	
02-Jul-21	10:27	73.7	66.1	
08-Jul-21	16:10	72.3	67.4	70.5
08-Jul-21	16:15	74.7	66.3	
08-Jul-21	16:20	74.6	66.3	
08-Jul-21	16:25	74.0	65.2	
08-Jul-21	16:30	74.1	67.5	
08-Jul-21	16:35	72.5	67.9	
14-Jul-21	10:10	72.2	67.1	69.9
14-Jul-21	10:15	72.9	65.8	
14-Jul-21	10:20	73.7	65.7	
14-Jul-21	10:25	73.8	67.2	
14-Jul-21	10:30	73.9	67.2	
14-Jul-21	10:35	74.0	67.1	
20-Jul-21	16:18	73.2	68.0	69.8
20-Jul-21	16:23	74.7	67.3	
20-Jul-21	16:28	74.3	68.0	
20-Jul-21	16:33	73.6	65.1	
20-Jul-21	16:38	74.0	66.9	
20-Jul-21	16:43	73.9	67.9	
26-Jul-21	10:12	74.8	66.7	70.0
26-Jul-21	10:17	74.5	65.6	
26-Jul-21	10:22	72.4	67.6	
26-Jul-21	10:27	72.8	67.2	
26-Jul-21	10:32	73.1	66.9	
26-Jul-21	10:37	73.0	66.1	
31-Jul-21	15:51	72.6	65.8	69.6
31-Jul-21	15:56	73.4	65.5	
31-Jul-21	16:01	72.7	67.9	
31-Jul-21	16:06	73.3	65.6	
31-Jul-21	16:11	72.7	67.0	
31-Jul-21	16:16	74.7	67.5	



The station set-up of a façade measurement at station NM3A.

# Graphical Presentation of Noise Monitoring Result at Station NM3A



**Noise Monitoring Result at Station NM4A**

Date	Time	Measured L10 dB(A)	Measured L90 dB(A)	Leq (30 min.) dB(A)
05-May-21	10:36	69.6	66.5	67.7
05-May-21	10:41	69.4	65.6	
05-May-21	10:46	68.5	66.4	
05-May-21	10:51	67.9	65.0	
05-May-21	10:56	69.3	64.1	
05-May-21	11:01	67.2	65.0	
11-May-21	16:41	69.9	65.1	68.4
11-May-21	16:46	68.7	66.2	
11-May-21	16:51	68.3	65.3	
11-May-21	16:56	69.0	65.7	
11-May-21	17:01	69.3	66.7	
11-May-21	17:06	69.8	64.6	
17-May-21	10:37	69.5	66.5	68.5
17-May-21	10:42	69.7	66.5	
17-May-21	10:47	67.5	64.6	
17-May-21	10:52	69.6	64.9	
17-May-21	10:57	69.5	66.2	
17-May-21	11:02	68.1	66.7	
22-May-21	16:43	69.0	66.0	68.0
22-May-21	16:48	69.2	64.3	
22-May-21	16:53	69.8	65.9	
22-May-21	16:58	67.1	64.2	
22-May-21	17:03	68.4	65.7	
22-May-21	17:08	69.3	66.5	
28-May-21	10:45	69.4	66.7	67.8
28-May-21	10:50	67.8	66.2	
28-May-21	10:55	68.5	64.6	
28-May-21	11:00	69.4	65.3	
28-May-21	11:05	69.5	65.5	
28-May-21	11:10	68.4	64.7	
03-Jun-21	16:37	70.3	61.5	64.0
03-Jun-21	16:42	69.8	62.7	
03-Jun-21	16:47	70.5	61.2	
03-Jun-21	16:52	69.3	61.4	
03-Jun-21	16:57	71.8	62.4	
03-Jun-21	17:02	71.1	63.9	
09-Jun-21	10:39	69.9	63.0	63.2
09-Jun-21	10:44	69.9	61.9	
09-Jun-21	10:49	70.1	60.4	
09-Jun-21	10:54	69.4	62.5	
09-Jun-21	10:59	69.5	63.2	
09-Jun-21	11:04	70.9	63.7	
15-Jun-21	16:36	69.9	64.1	68.8
15-Jun-21	16:41	71.3	66.3	
15-Jun-21	16:46	70.5	65.8	
15-Jun-21	16:51	70.2	64.7	
15-Jun-21	16:56	70.5	65.0	
15-Jun-21	17:01	71.2	66.6	
21-Jun-21	10:41	70.0	66.1	68.8
21-Jun-21	10:46	69.8	64.4	
21-Jun-21	10:51	71.5	65.8	
21-Jun-21	10:56	71.2	64.6	
21-Jun-21	11:01	69.3	64.2	
21-Jun-21	11:06	71.6	64.5	
26-Jun-21	16:35	71.0	66.4	68.5
26-Jun-21	16:40	71.7	64.4	
26-Jun-21	16:45	70.3	65.0	
26-Jun-21	16:50	69.2	65.5	
26-Jun-21	16:55	69.6	66.5	
26-Jun-21	17:00	71.3	65.5	

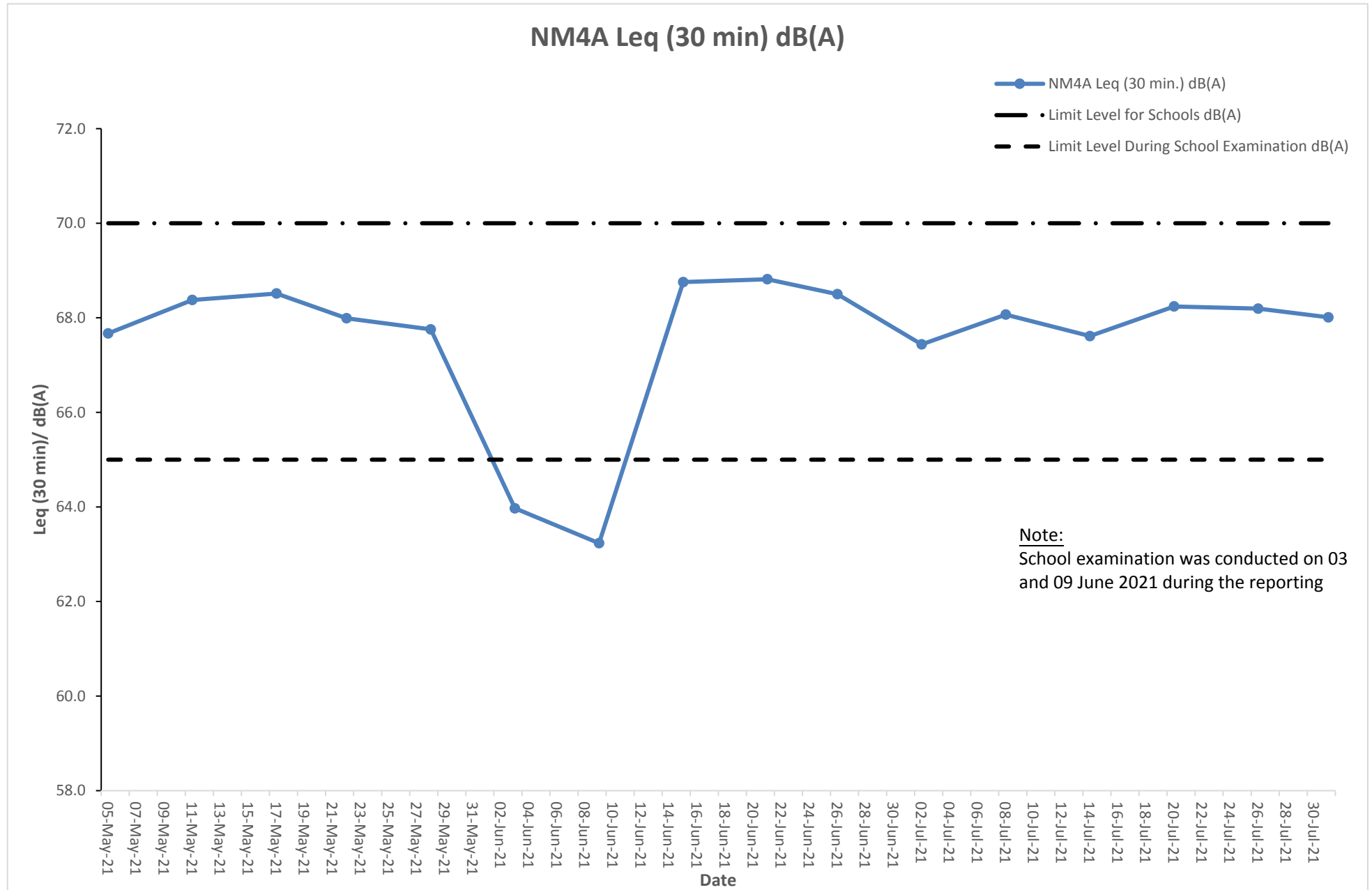
**Noise Monitoring Result at Station NM4A**

Date	Time	Measured L10 dB(A)	Measured L90 dB(A)	Leq (30 min.) dB(A)
02-Jul-21	10:37	71.4	65.8	67.4
02-Jul-21	10:42	69.4	65.4	
02-Jul-21	10:47	70.2	66.4	
02-Jul-21	10:52	70.8	65.2	
02-Jul-21	10:57	71.8	64.8	
02-Jul-21	11:02	70.9	66.2	
08-Jul-21	16:45	71.8	66.1	68.1
08-Jul-21	16:50	70.3	66.8	
08-Jul-21	16:55	69.2	65.9	
08-Jul-21	17:00	71.1	64.5	
08-Jul-21	17:05	70.3	66.8	
08-Jul-21	17:10	70.4	64.9	
14-Jul-21	10:45	70.2	64.8	67.6
14-Jul-21	10:50	72.0	65.9	
14-Jul-21	10:55	69.6	64.5	
14-Jul-21	11:00	71.9	65.1	
14-Jul-21	11:05	70.7	63.4	
14-Jul-21	11:10	70.6	65.2	
20-Jul-21	16:53	71.8	63.7	68.2
20-Jul-21	16:58	69.9	63.7	
20-Jul-21	17:03	70.6	65.3	
20-Jul-21	17:08	70.5	64.6	
20-Jul-21	17:13	72.0	64.4	
20-Jul-21	17:18	70.5	64.9	
26-Jul-21	10:47	69.4	64.8	68.2
26-Jul-21	10:52	70.0	65.9	
26-Jul-21	10:57	69.5	63.5	
26-Jul-21	11:02	72.1	65.4	
26-Jul-21	11:07	71.5	65.1	
26-Jul-21	11:12	70.3	65.5	
31-Jul-21	16:26	70.3	65.4	68.0
31-Jul-21	16:31	71.2	65.4	
31-Jul-21	16:36	69.9	65.0	
31-Jul-21	16:41	69.5	65.0	
31-Jul-21	16:46	69.6	63.4	
31-Jul-21	16:51	70.6	65.1	



The station set-up of a façade measurement at station NM4A.

**Graphical Presentation of Noise Monitoring Result at Station NM4A**



**Noise Monitoring Result at Station NM5A**

Date	Time	Measured L10 dB(A)	Measured L90 dB(A)	Leq (30 min.) dB(A)	Leq (30 min.) +3 dB(A)
05-May-21	9:21	66.9	61.1	63.2	66.2
05-May-21	9:26	64.8	59.9		
05-May-21	9:31	64.6	61.2		
05-May-21	9:36	65.2	60.8		
05-May-21	9:41	65.7	59.5		
05-May-21	9:46	64.1	59.9		
11-May-21	15:25	64.1	60.1	62.7	65.7
11-May-21	15:30	66.4	59.4		
11-May-21	15:35	64.6	59.1		
11-May-21	15:40	66.1	60.2		
11-May-21	15:45	64.7	61.1		
11-May-21	15:50	64.3	60.0		
17-May-21	9:22	64.9	59.5	62.6	65.6
17-May-21	9:27	65.5	60.6		
17-May-21	9:32	65.5	62.0		
17-May-21	9:37	64.2	61.0		
17-May-21	9:42	65.5	61.5		
17-May-21	9:47	66.2	60.9		
22-May-21	15:27	65.1	61.9	64.0	67.0
22-May-21	15:32	65.6	60.1		
22-May-21	15:37	66.3	59.1		
22-May-21	15:42	65.9	59.2		
22-May-21	15:47	66.2	59.6		
22-May-21	15:52	64.8	61.9		
28-May-21	9:30	65.8	61.6	63.1	66.1
28-May-21	9:35	65.0	60.8		
28-May-21	9:40	66.8	59.3		
28-May-21	9:45	64.7	61.7		
28-May-21	9:50	64.4	60.1		
28-May-21	9:55	65.0	60.7		
03-Jun-21	15:22	66.1	59.9	63.1	66.1
03-Jun-21	15:27	64.5	59.7		
03-Jun-21	15:32	66.4	60.1		
03-Jun-21	15:37	66.6	60.4		
03-Jun-21	15:42	64.4	59.8		
03-Jun-21	15:47	64.9	59.4		
09-Jun-21	9:23	66.8	59.7	62.6	65.6
09-Jun-21	9:28	67.0	60.4		
09-Jun-21	9:33	64.5	58.6		
09-Jun-21	9:38	65.9	58.3		
09-Jun-21	9:43	66.8	58.9		
09-Jun-21	9:48	65.6	60.1		
15-Jun-21	15:21	64.2	60.8	62.5	65.5
15-Jun-21	15:26	65.9	58.0		
15-Jun-21	15:31	64.5	59.4		
15-Jun-21	15:36	66.7	59.8		
15-Jun-21	15:41	65.2	59.1		
15-Jun-21	15:46	66.2	58.0		
21-Jun-21	9:25	67.0	60.8	63.0	66.0
21-Jun-21	9:30	65.5	59.3		
21-Jun-21	9:35	67.1	59.4		
21-Jun-21	9:40	64.3	58.2		
21-Jun-21	9:45	66.7	59.1		
21-Jun-21	9:50	66.7	59.8		
26-Jun-21	15:20	65.8	59.7	62.5	65.5
26-Jun-21	15:25	64.5	60.9		
26-Jun-21	15:30	65.5	59.2		
26-Jun-21	15:35	66.4	59.3		
26-Jun-21	15:40	65.5	58.8		
26-Jun-21	15:45	65.5	60.2		

**Noise Monitoring Result at Station NM5A**

Date	Time	Measured L10 dB(A)	Measured L90 dB(A)	Leq (30 min.) dB(A)	Leq (30 min.) +3 dB(A)
02-Jul-21	9:22	64.5	60.8	62.6	65.6
02-Jul-21	9:27	65.8	59.1		
02-Jul-21	9:32	65.7	59.1		
02-Jul-21	9:37	64.1	60.8		
02-Jul-21	9:42	65.7	60.9		
02-Jul-21	9:47	64.7	58.7	62.3	65.3
08-Jul-21	15:29	66.4	60.3		
08-Jul-21	15:34	64.9	59.4		
08-Jul-21	15:39	64.4	60.9		
08-Jul-21	15:44	64.2	58.3		
08-Jul-21	15:49	66.5	58.4	62.3	65.3
08-Jul-21	15:54	64.2	60.0		
14-Jul-21	9:30	66.0	59.3		
14-Jul-21	9:35	65.6	59.7		
14-Jul-21	9:40	65.9	59.0		
14-Jul-21	9:45	66.3	59.1	62.3	65.3
14-Jul-21	9:50	64.5	58.8		
14-Jul-21	9:55	66.5	60.5		
20-Jul-21	15:37	65.7	60.6		
20-Jul-21	15:42	66.8	58.3		
20-Jul-21	15:47	66.8	59.7	62.3	65.3
20-Jul-21	15:52	65.9	60.3		
20-Jul-21	15:57	66.2	59.0		
20-Jul-21	16:02	67.1	58.3		
26-Jul-21	9:32	66.7	60.1		
26-Jul-21	9:37	66.8	58.1	62.9	65.9
26-Jul-21	9:42	67.1	58.5		
26-Jul-21	9:47	66.5	60.7		
26-Jul-21	9:52	65.3	58.2		
26-Jul-21	9:57	66.5	58.5		
31-Jul-21	15:10	65.2	59.9	62.9	65.9
31-Jul-21	15:15	65.5	60.0		
31-Jul-21	15:20	65.0	58.5		
31-Jul-21	15:25	64.8	59.7		
31-Jul-21	15:30	66.9	59.6		
31-Jul-21	15:35	66.7	59.1		

**Remarks:**

+3dB(A) correction was applied to free-field measurement.



The station set-up of a free-field measurement at station NM5A.

# Graphical Presentation of Noise Monitoring Result at Station NM5A

