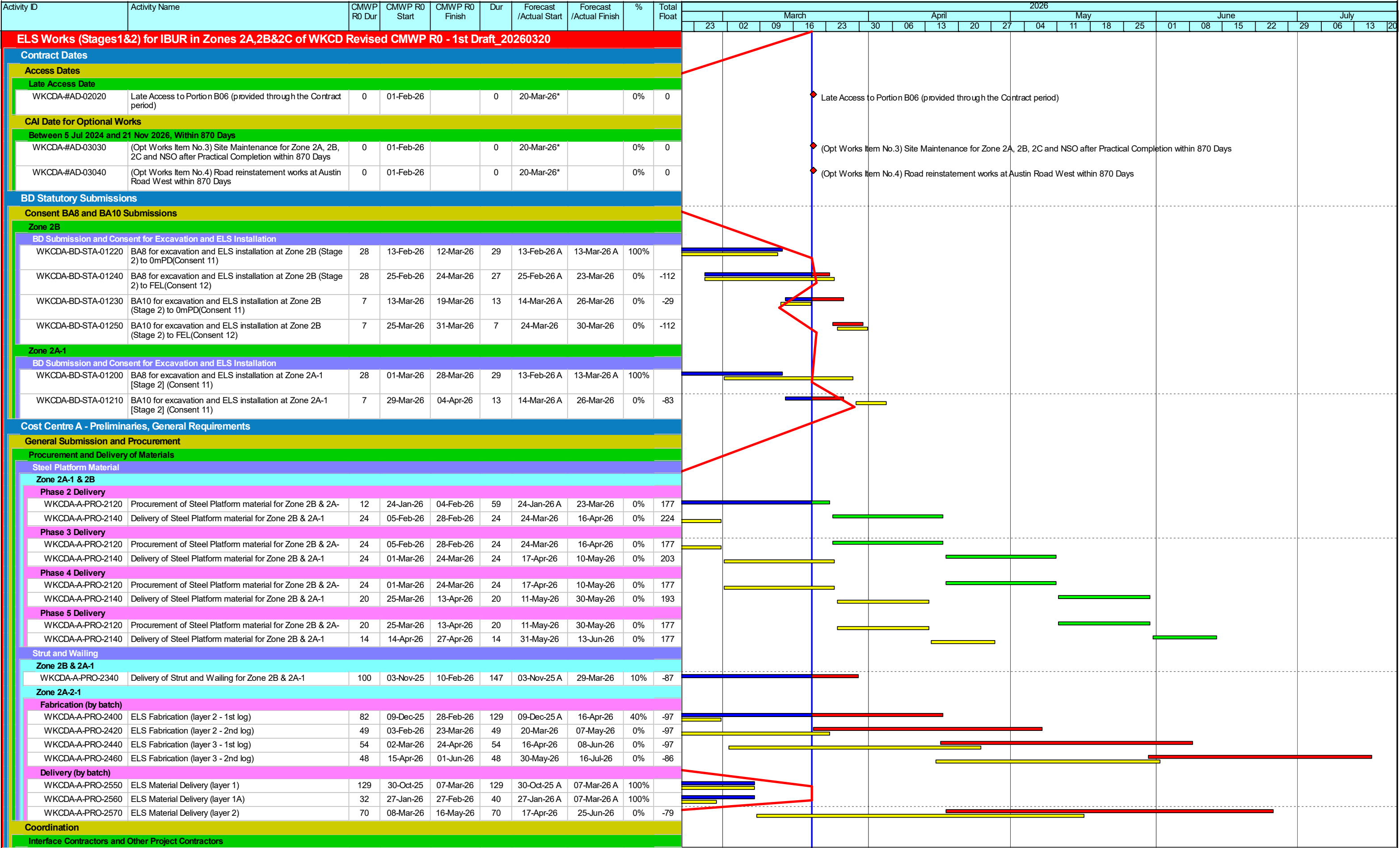
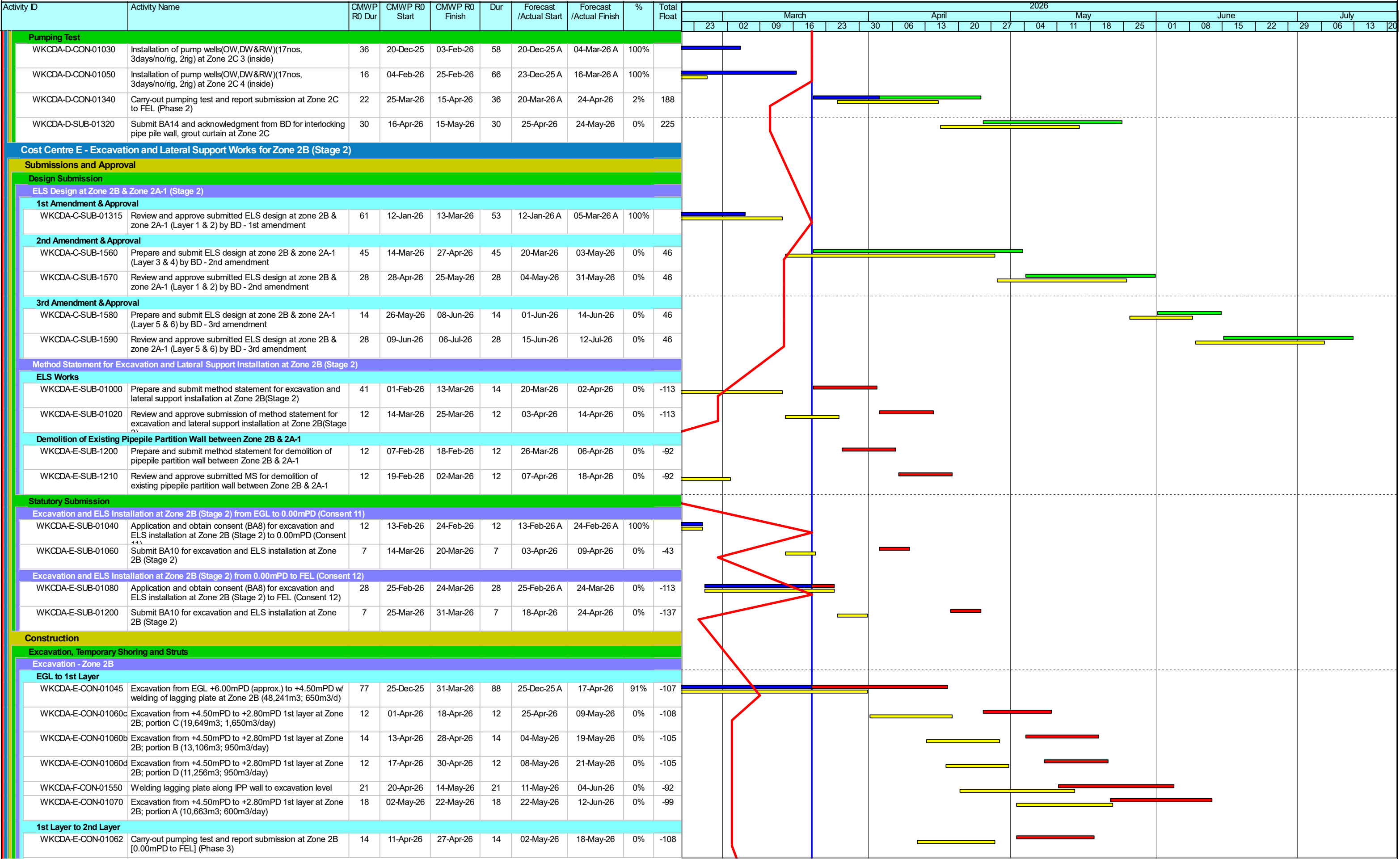


ELS Works (Stages 1 & 2) for Integrated Basement and Underground Road in Zones 2A, 2B and 2C of West Kowloon Cultural District



ELS Works (Stages 1 & 2) for Integrated Basement and Underground Road in Zones 2A, 2B and 2C of West Kowloon Cultural District																																		
Activity ID		Activity Name	CMWP R0 Dur	CMWP R0 Start	CMWP R0 Finish	Dur	Forecast /Actual Start	Forecast /Actual Finish	%	Total Float	2026																							
											March					April					May					June				July				
											23	02	09	16	23	30	06	13	20	27	04	11	18	25	01	08	15	22	29	06	13	20		
WKCD-A-CIC-01050		Coordination with Contract no.CC/2017/3A/031 L2 Contract for Lyric Theatre Complex and Extended basement project	578	05-Jul-24	02-Feb-26	624	05-Jul-24 A	20-Mar-26	80%	283																								
Construction																																		
Barging Point Facilities																																		
Coordination with Disposal Site																																		
WKCD-A-MOB-01520		Coordination with Macao Project for disposal;	400	25-Dec-25	07-May-27	409	25-Dec-25 A	19-May-27	0%	-107																								
Cost Centre B & I - General, Hoarding and Monitoring Works																																		
Construction																																		
General and Monitoring Works																																		
Relocate Water Check Meter Cabinet																																		
WKCD-B-MOB-01240		Relocation of check water meter cabinet at Zone 2A East gantry	24	23-Feb-26	21-Mar-26	24	11-Apr-26	09-May-26	0%	101																								
WKCD-B-MOB-01100		Site clearance, break up and removal of existing road pavement and light posts, signages	44	23-Mar-26	18-May-26	44	11-May-26	03-Jul-26	0%	101																								
Coordination of External Works and Utilities Services																																		
WKCD-B-MOB-01160		Coordination with highways department(HyD)	597	05-Jul-24	21-Feb-26	644	05-Jul-24 A	09-Apr-26	90%	104																								
WKCD-B-MOB-01200		Coordination with WSD	598	05-Jul-24	22-Feb-26	645	05-Jul-24 A	10-Apr-26	82%	123																								
WKCD-B-MOB-1420		Coordination with MTRC	463	06-Dec-24	13-Mar-26	510	06-Dec-24 A	29-Apr-26	82%	156																								
WKCD-B-MOB-1440		Coordination with DSD	463	06-Dec-24	13-Mar-26	510	06-Dec-24 A	29-Apr-26	82%	156																								
WKCD-B-MOB-1460		Coordination with FSD	429	20-Dec-24	21-Feb-26	476	20-Dec-24 A	09-Apr-26	82%	176																								
WKCD-B-MOB-1480		Coordination with other UU authorities	449	20-Dec-24	13-Mar-26	496	20-Dec-24 A	29-Apr-26	82%	156																								
WSD Pipe Diversion and Light Post (HyD) near Zone 2A																																		
WKCD-B-MOB-01180		Relocation of existing light post at Zone 2A East gantry	60	23-Feb-26	08-May-26	60	10-Apr-26	22-Jun-26	0%	85																								
Hoarding and Gantry																																		
Under Variation Order																																		
WKCD-B-MOB-01340a		Erection and installation of steel frame for covered walkway along Austin Road West (VO)	42	02-Feb-26	25-Mar-26	42	20-Mar-26	13-May-26	0%	169																								
WKCD-B-MOB-01360a		Finishing works for covered walkway (including graphic, lighting and steel boards) along Austin Road West (VO)	24	26-Mar-26	27-Apr-26	24	14-May-26	11-Jun-26	0%	169																								
Cost Centre C - Excavation and Lateral Support Works for Zone 2B (Stage 1)																																		
Submissions and Approval																																		
Design Submission and Statutory Submission																																		
ELS Design at Zone 2B (Stage 1)																																		
WKCD-C-SUB-1550		Zone 2B & 2C ELS Stage 1 (IPP, Jet Grouting, King Posts & Grout Curtain) - 7th Amendment Submission	29	05-Feb-26	05-Mar-26	29	20-Mar-26*	17-Apr-26	0%	-137																								
BD Submission																																		
WKCD-C-SUB-01440		Submit BA14 and acknowledgment from BD for interlocking pipe pile wall, grout curtain and king post at Zone 2B	28	13-Feb-26	12-Mar-26	29	13-Feb-26 A	13-Mar-26 A	100%																									
Construction																																		
Post Grout Curtain Works																																		
Jet Grouting Works at Middle Row																																		
WKCD-C-CON-11270		Carry-out Post jet grout Middle Row at Zone 2B, 44	87	18-Nov-25	05-Mar-26	89	18-Nov-25 A	07-Mar-26 A	100%																									
WKCD-C-CON-11290		Carry-out Post jet grout Middle Row at Zone 2B, 70	87	18-Nov-25	05-Mar-26	89	18-Nov-25 A	07-Mar-26 A	100%																									
Jet Grout at Zone 2B (AURW & Middle Row)																																		
AUWR																																		
WKCD-C-CON-01924a		Jet Grout (Type 4 - 8.25m width, 5 cluster) 61 nos.	26	10-Feb-26	14-Mar-26	27	10-Feb-26 A	16-Mar-26 A	100%																									
Middle Row																																		
WKCD-C-CON-01906		Jet Grout (Type 8 - 6.50m width, 4 cluster) 44 nos.	87	18-Nov-25	05-Mar-26	89	18-Nov-25 A	07-Mar-26 A	100%																									
WKCD-C-CON-11300		Jet Grout (Type 7 - 6.50m width, 4 cluster) 70 nos.	87	18-Nov-25	05-Mar-26	89	18-Nov-25 A	07-Mar-26 A	100%																									
Cost Centre D - Excavation and Lateral Support Works for Zone 2C (Stage 1)																																		
Construction																																		
Post Grout Curtain Works																																		
Drilling for Post-grout Curtain Works Part 1																																		
WKCD-D-CON-1360		Drilling for post grout curtain works at Zone 2C(A_A037 to A_A001)(Consent 6b) 37	166	30-Jul-25	14-Feb-26	174	30-Jul-25 A	27-Feb-26 A	100%																									
Drilling for Post-grout Curtain Works Part 2																																		
WKCD-D-CON-1340		Drilling for post grout curtain works at Zone 2C(A_A348 to A_A397)(Consent 6b) 50	93	25-Oct-25	14-Feb-26	130	25-Oct-25 A	02-Apr-26	40%	151																								
Post Grout Curtain Works Part 2																																		
WKCD-D-CON-01300		Carry-out post grout curtain works at Zone 2C(A_A348 to A_A397)(Consent 6b) 50	119	25-Oct-25	20-Mar-26	110	25-Oct-25 A	10-Mar-26 A	100%																									
Closing Point 07 (bet. Gammon Existing IPP & PPA-004)																																		
WKCD-C-CON-11220		Carry-out post grout works (AD_001_AD_006) at Seaside Row	19	21-Feb-26	14-Mar-26	29	30-Jan-26 A	07-Mar-26 A	100%																									
2ABC.Rev.R0-1D-20260																																		

ELS Works (Stages 1 & 2) for Integrated Basement and Underground Road in Zones 2A, 2B and 2C of West Kowloon Cultural District



- ◆

◆ Milestone

▬ Planned Bar
- ◆

◆ Critical MS

▬ Actual Work Complet...
- ▬

▬ Critical Bar

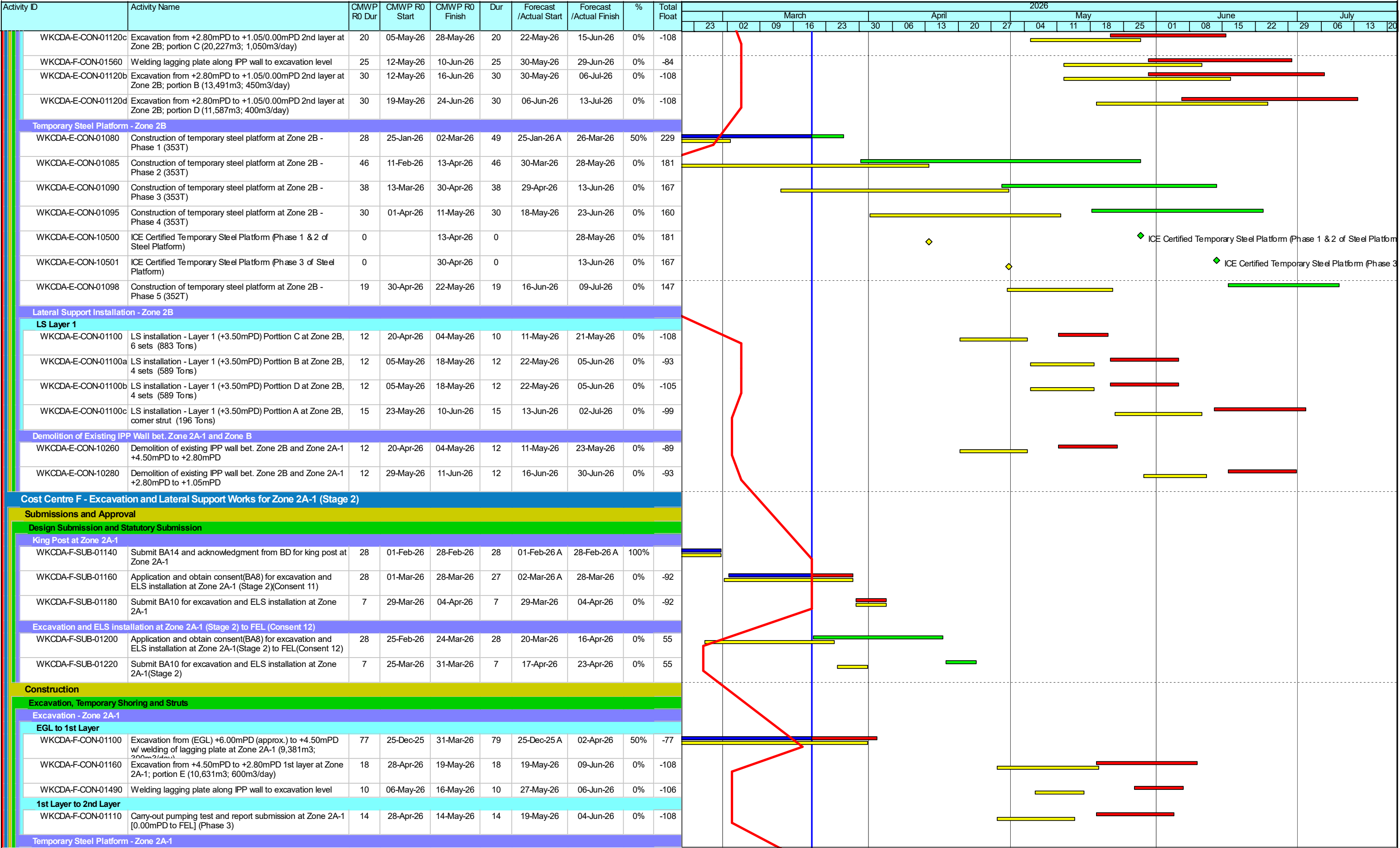
◆

◆ R0 MS

CC/2023/2B/095  
Three Month Rolling Programme as of 20 Mar 2026 (Rev. CMWP R0 - 1st Draft)

Date	Revision	Checked	Approved
20-Mar-26	Revised CMWP R0 - 1st Draft	PP	

ELS Works (Stages 1 & 2) for Integrated Basement and Underground Road in Zones 2A, 2B and 2C of West Kowloon Cultural District



- ◆

◆ Milestone

▬ Planned Bar
- ◆

◆ Critical MS

▬ Actual Work Complet...
- ▬

▬ Critical Bar

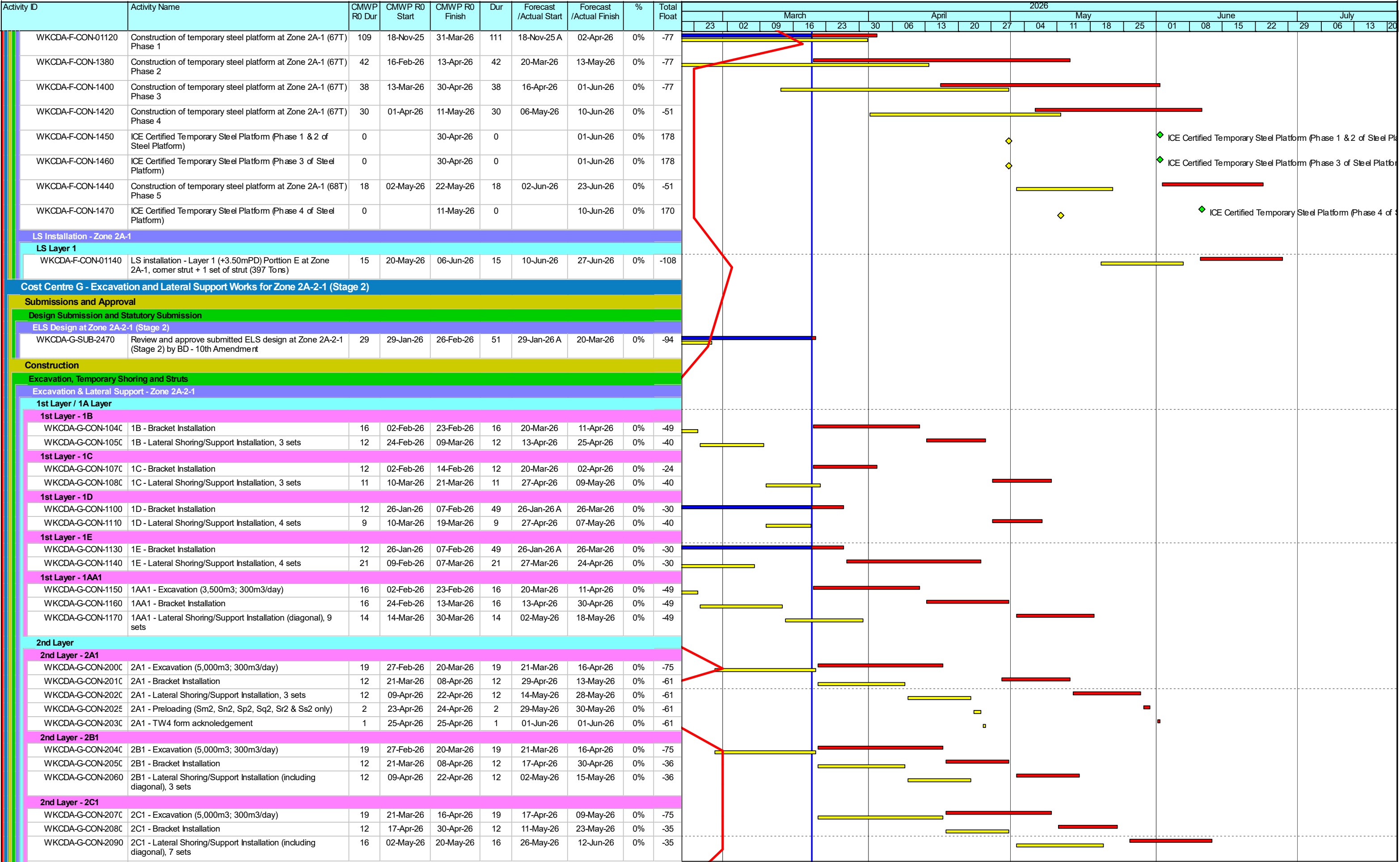
◆ R0 MS

CC/2023/2B/095  
Three Month Rolling Programme as of 20 Mar 2026 (Rev. CMWP R0 - 1st Draft)

Date	Revision	Checked	Approved
20-Mar-26	Revised CMWP R0 - 1st Draft	PP	



ELS Works (Stages 1 & 2) for Integrated Basement and Underground Road in Zones 2A, 2B and 2C of West Kowloon Cultural District



- ◆

◆ Milestone

▬ Planned Bar
- ◆

◆ Critical MS

▬ Actual Work Complet...
- ▬

▬ Critical Bar

◆ R0 MS

CC/2023/2B/095  
Three Month Rolling Programme as of 20 Mar 2026 (Rev. CMWP R0 - 1st Draft)

Date	Revision	Checked	Approved
20-Mar-26	Revised CMWP R0 - 1st Draft	PP	

ELS Works (Stages 1 & 2) for Integrated Basement and Underground Road in Zones 2A, 2B and 2C of West Kowloon Cultural District

Activity ID	Activity Name	CMWP R0 Dur	CMWP R0 Start	CMWP R0 Finish	Dur	Forecast /Actual Start	Forecast /Actual Finish	%	Total Float	2026																													
										March						April						May						June						July					
										23	02	09	16	23	30	06	13	20	27	04	11	18	25	01	08	15	22	29	06	13	20								
<div>2nd Layer - 2D1</div> <div>WKCDA-G-CON-210C</div> <div>WKCDA-G-CON-2110</div> <div>2nd Layer - 2A2</div> <div>WKCDA-G-CON-213C</div> <div>WKCDA-G-CON-214C</div> <div>WKCDA-G-CON-215C</div> <div>2nd Layer - 2B2</div> <div>WKCDA-G-CON-216C</div> <div>WKCDA-G-CON-217C</div> <div>WKCDA-G-CON-218C</div> <div>2nd Layer - 2C2</div> <div>WKCDA-G-CON-219C</div> <div>3rd Layer</div> <div>3rd Layer - 3A1</div> <div>WKCDA-G-CON-300C</div> <div>3rd Layer - 3B1</div> <div>WKCDA-G-CON-304C</div> <div>3rd Layer - 3A2</div> <div>WKCDA-G-CON-244C</div>	2D1 - Excavation (5,000m3; 300m3/day)	19	17-Apr-26	09-May-26	19	19-May-26	10-Jun-26	0%	-49																														
	2D1 - Bracket Installation	12	11-May-26	23-May-26	12	11-Jun-26	25-Jun-26	0%	-49																														
	2A2 - Excavation (5,000m3; 300m3/day)	19	21-Mar-26	16-Apr-26	19	17-Apr-26	09-May-26	0%	-75																														
	2A2 - Bracket Installation	12	17-Apr-26	30-Apr-26	12	11-May-26	23-May-26	0%	-62																														
	2A2 - Lateral Shoring/Support Installation, 3 sets	12	02-May-26	15-May-26	12	26-May-26	08-Jun-26	0%	-62																														
	2B2 - Excavation (5,000m3; 300m3/day)	19	17-Apr-26	09-May-26	19	11-May-26	02-Jun-26	0%	-75																														
	2B2 - Bracket Installation	12	11-May-26	23-May-26	12	03-Jun-26	16-Jun-26	0%	-69																														
	2B2 - Lateral Shoring/Support Installation, 3 sets	12	26-May-26	08-Jun-26	12	17-Jun-26	02-Jul-26	0%	-69																														
	2C2 - Excavation (5,000m3; 300m3/day)	19	11-May-26	02-Jun-26	19	03-Jun-26	25-Jun-26	0%	-75																														
	3rd Layer																																						
	3rd Layer - 3A1																																						
	WKCDA-G-CON-300C	3A1 - Excavation (2,500m3; 250m3/day)	12	27-Apr-26	11-May-26	12	02-Jun-26	15-Jun-26	0%	-61																													
3rd Layer - 3B1																																							
WKCDA-G-CON-304C	3B1 - Excavation (2,500m3; 250m3/day)	12	12-May-26	26-May-26	12	16-Jun-26	30-Jun-26	0%	-61																														
3rd Layer - 3A2																																							
WKCDA-G-CON-244C	3A2 - Excavation (2,500m3; 250m3/day)	12	16-May-26	30-May-26	12	09-Jun-26	23-Jun-26	0%	-62																														
Cost Centre J & M - Site Safety and Smart Site Safety System																																							
General Submission																																							
Submission and Approval and Implementation																																							
WKCDA-JM-SUB-01000	Submit and update Construction Health and Safety Plan	908	15-Jul-24	08-Jan-27	908	15-Jul-24 A	08-Jan-27	77%	-4																														
WKCDA-JM-SUB-01100	Implementation and update of SSSS(including communication network,centralized management platform etc.)	856	05-Sep-24	08-Jan-27	856	05-Sep-24 A	08-Jan-27	77%	-4																														
Cost Centre K - Environmental Management																																							
General Submission																																							
Submission and Approval and Implementation																																							
WKCDA-K-SUB-01020	Conduct environmental monitoring & audit and submit EM&A report to EPD	918	05-Jul-24	08-Jan-27	918	05-Jul-24 A	08-Jan-27	77%	-4																														
WKCDA-K-SUB-01040	Implementation of the EM&A programme	885	07-Aug-24	08-Jan-27	885	07-Aug-24 A	08-Jan-27	77%	-4																														
WKCDA-K-SUB-01000	Submit and update Environmental Management Plan	885	07-Aug-24	08-Jan-27	885	07-Aug-24 A	08-Jan-27	77%	-4																														
Cost Centre P, Q, R & S- Optional Works																																							
Item No.1 - Maintenance and Demolition of NSO																																							
Site Maintenance and Demolition of NSO																																							
WKCDA-P-#OW-01000	Take-over and maintenance of NSO	887	05-Jul-24	08-Dec-26	887	05-Jul-24 A	08-Dec-26	77%	-5																														
Item No.2 - Adoption of G/F as CA's and RSS's Site Office & Maintenance of 1/F and Demolition of NSO																																							
Site Maintenance and Demolition of NSO																																							
WKCDA-Q-#OW-01000	Take-over adoption of G/F NSO as CA and RSS's site office and maintenance of 1/F NSO	887	05-Jul-24	08-Dec-26	887	05-Jul-24 A	08-Dec-26	75%	-5																														
Item No.4 - Road Reinstatement Works at Aust in Road West																																							
Road Reinstatement Works																																							
WKCDA-S-#OW-01000	Prepare and submit TTMS scheme for road reinstatement works at Austin Road West	14	01-Feb-26	14-Feb-26	14	20-Mar-26	02-Apr-26	0%	69																														
WKCDA-S-#OW-01020	Review and approve submission of TTMS scheme for road reinstatement works at Austin Road West	28	15-Feb-26	14-Mar-26	28	03-Apr-26	30-Apr-26	0%	69																														
WKCDA-S-#OW-01040	Coordination and approval of TTMS scheme with TMLG	60	15-Mar-26	13-May-26	60	01-May-26	29-Jun-26	0%	69																														
WKCDA-S-#OW-01040a	- 1st Relevant Authority's review	15	15-Mar-26	29-Mar-26	15	01-May-26	15-May-26	0%	69																														
WKCDA-S-#OW-01040b	- Address comment from Relevant Authority	15	30-Mar-26	13-Apr-26	15	16-May-26	30-May-26	0%	69																														
WKCDA-S-#OW-01040c	- 2nd Relevant Authority's review	15	14-Apr-26	28-Apr-26	15	31-May-26	14-Jun-26	0%	69																														
WKCDA-S-#OW-01040d	- Address comment from Relevant Authority's and obtain approval	15	29-Apr-26	13-May-26	15	15-Jun-26	29-Jun-26	0%	69																														