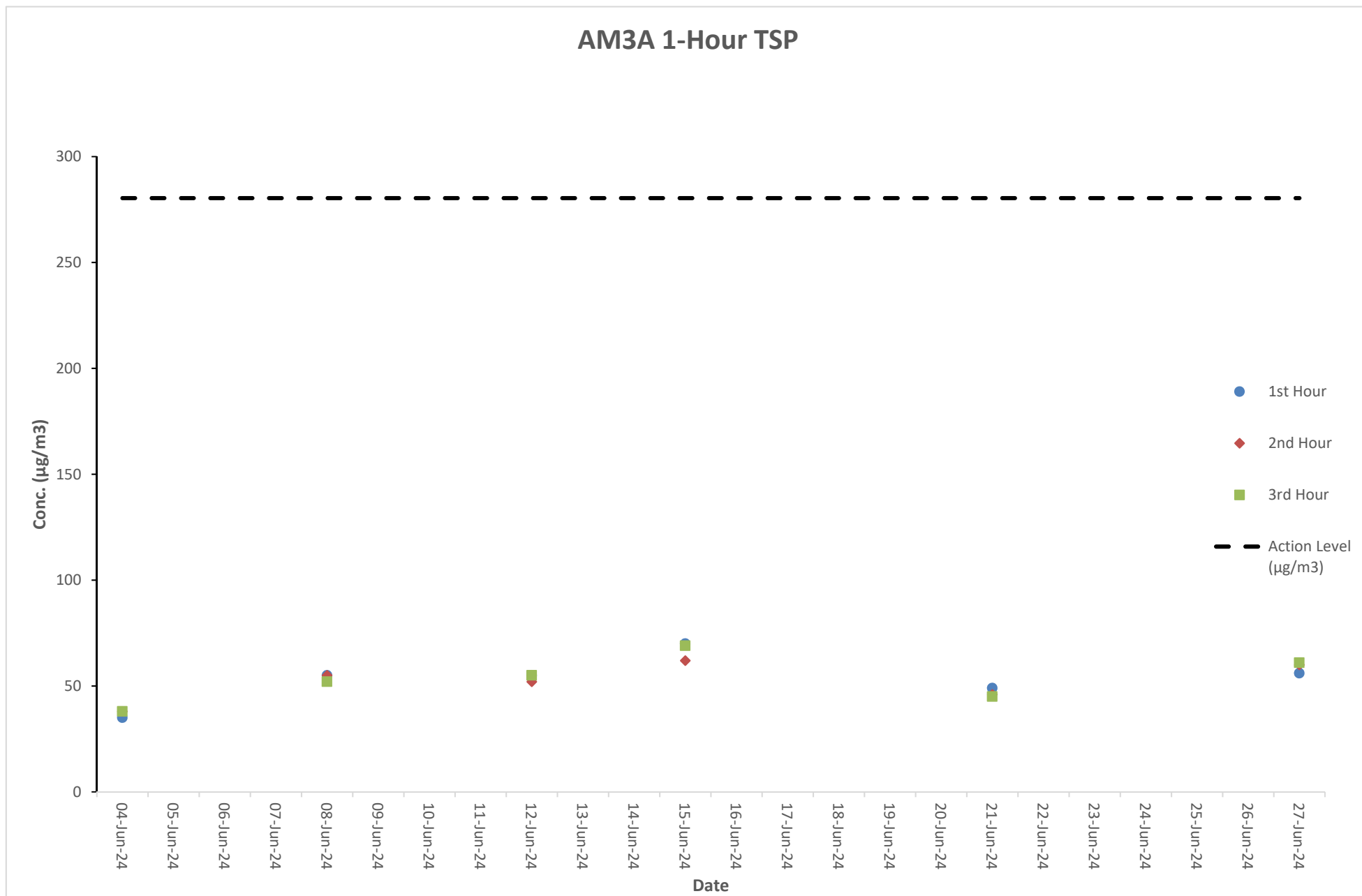


Air Quality Monitoring Result at Station AM3A (1-hour TSP)

Date	Weather Condition	Time		Conc. ($\mu\text{g}/\text{m}^3$)			Action Level	Limit Level
		Start	Finish	1st Hour	2nd Hour	3rd Hour		
04-Jun-24	Cloudy	08:05	11:05	35	38	38	280.4	500
08-Jun-24	Cloudy	14:09	17:09	55	55	52	280.4	500
12-Jun-24	Cloudy	08:02	11:02	55	52	55	280.4	500
15-Jun-24	Cloudy	14:01	17:01	70	62	69	280.4	500
21-Jun-24	Fine	08:07	11:07	49	46	45	280.4	500
27-Jun-24	Cloudy	14:00	17:00	56	60	61	280.4	500

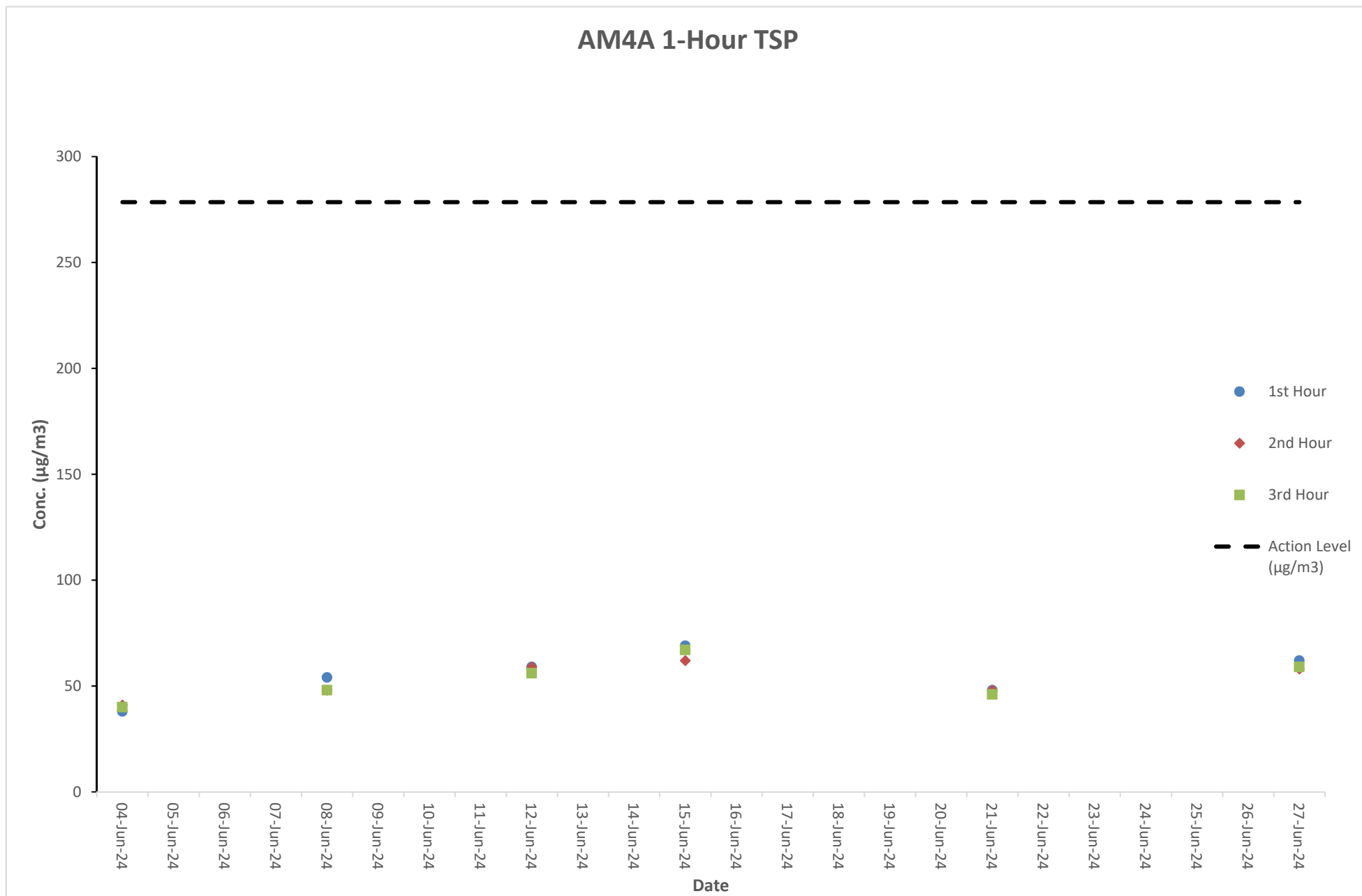
Graphical Presentation of Air Quality Monitoring Result at Station AM3A (1-hour TSP)



Air Quality Monitoring Result at Station AM4A (1-hour TSP)

Date	Weather Condition	Time		Conc. ($\mu\text{g}/\text{m}^3$)			Action Level	Limit Level
		Start	Finish	1st Hour	2nd Hour	3rd Hour		
04-Jun-24	Cloudy	08:13	11:13	38	41	40	278.5	500
08-Jun-24	Cloudy	14:17	17:17	54	48	48	278.5	500
12-Jun-24	Cloudy	08:10	11:10	59	59	56	278.5	500
15-Jun-24	Cloudy	14:09	17:09	69	62	67	278.5	500
21-Jun-24	Fine	08:15	11:15	48	48	46	278.5	500
27-Jun-24	Cloudy	14:08	17:08	62	58	59	278.5	500

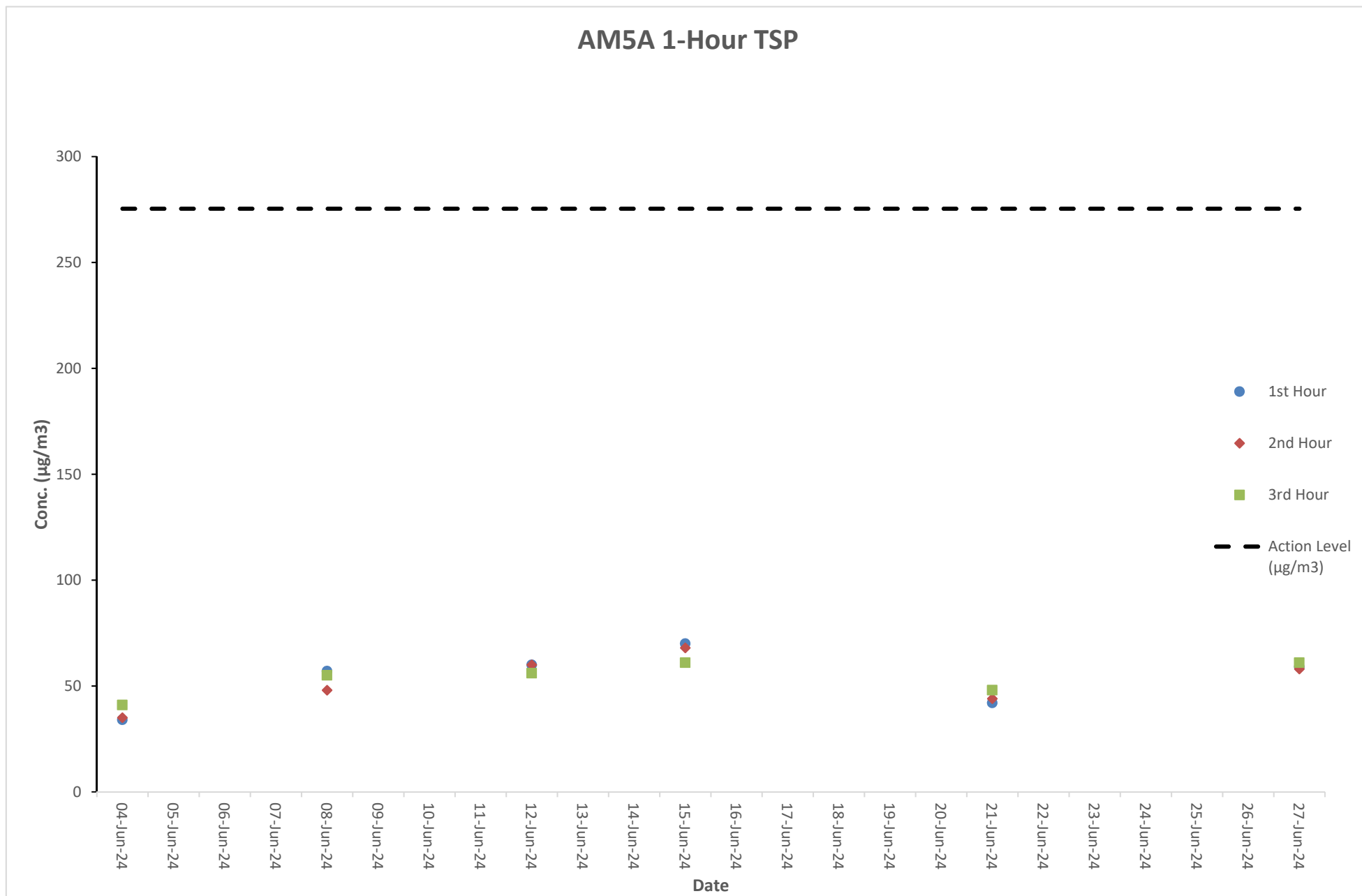
Graphical Presentation of Air Quality Monitoring Result at Station AM4A (1-hour TSP)



Air Quality Monitoring Result at Station AM5A (1-hour TSP)

Date	Weather Condition	Time		Conc. ($\mu\text{g}/\text{m}^3$)			Action Level	Limit Level
		Start	Finish	1st Hour	2nd Hour	3rd Hour		
04-Jun-24	Cloudy	08:28	11:28	34	35	41	275.4	500
08-Jun-24	Cloudy	14:34	17:34	57	48	55	275.4	500
12-Jun-24	Cloudy	08:25	11:25	60	60	56	275.4	500
15-Jun-24	Cloudy	14:26	17:26	70	68	61	275.4	500
21-Jun-24	Fine	08:30	11:30	42	44	48	275.4	500
27-Jun-24	Cloudy	14:25	17:25	59	58	61	275.4	500

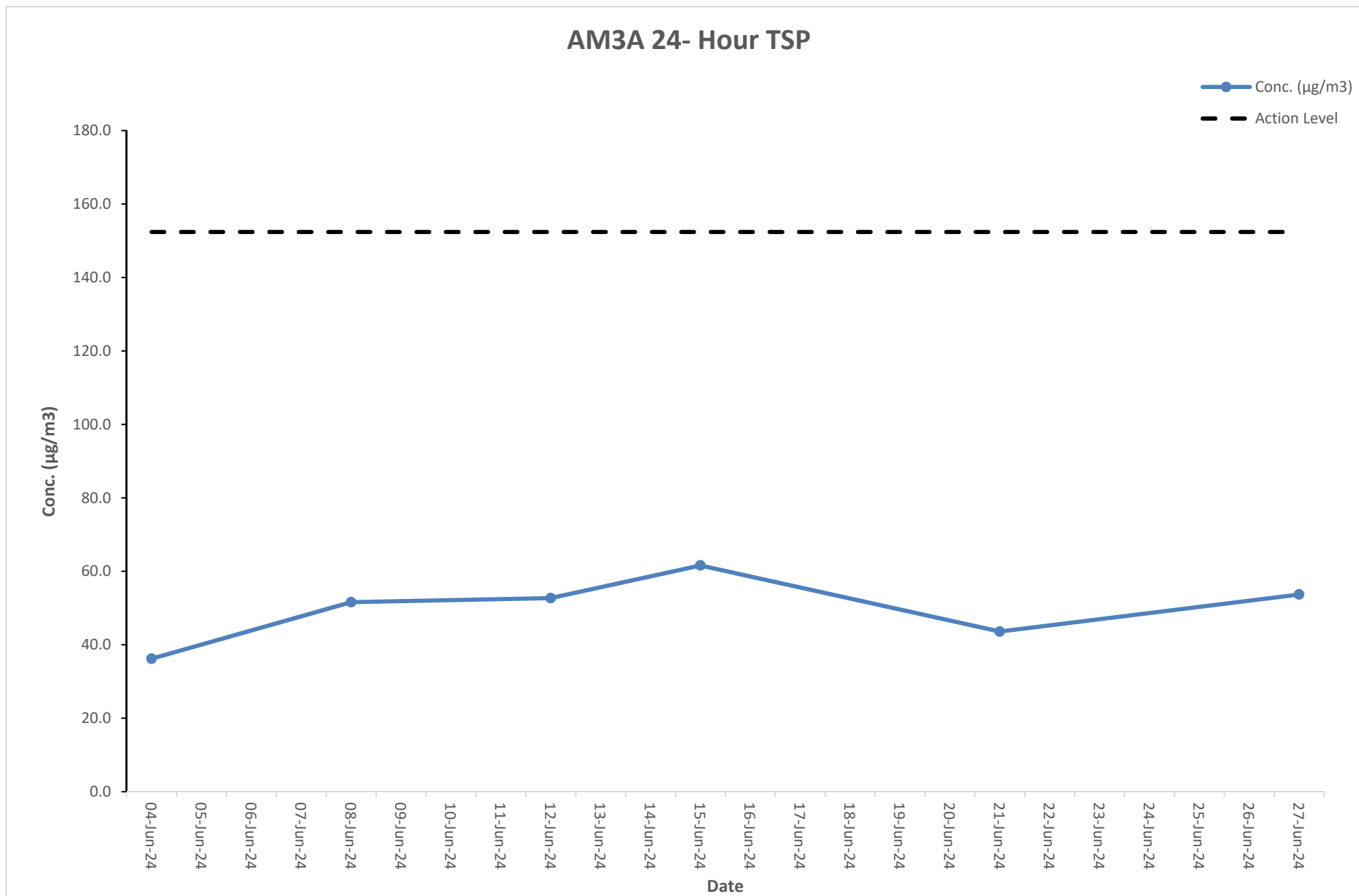
Graphical Presentation of Air Quality Monitoring Result at Station AM5A (1-hour TSP)



Air Quality Monitoring Result at Station AM3A (24-hour TSP)

Start		Finish		Filter Weight (g)		Elapsed Time Reading		Sampling Time (hrs)	Flow Rate (m ³ /min)			Conc. (µg/m3)	Weather Condition	Action Level	Limit Level
Date	Time	Date	Time	Initial	Final	Initial	Final		Initial	Final	Average				
04-Jun-24	10:00AM	05-Jun-24	10:00AM	2.8090	2.8672	6831.8	6855.8	24	1.12	1.12	1.12	36.2	Rainy	152.4	260
08-Jun-24	10:00AM	09-Jun-24	10:00AM	2.8050	2.8880	6855.8	6879.8	24	1.12	1.12	1.12	51.6	Rainy	152.4	260
12-Jun-24	10:00AM	13-Jun-24	10:00AM	2.8059	2.8906	6879.8	6903.8	24	1.12	1.12	1.12	52.7	Rainy	152.4	260
15-Jun-24	10:00AM	16-Jun-24	10:00AM	2.8087	2.9078	6903.8	6927.8	24	1.12	1.12	1.12	61.6	Rainy	152.4	260
21-Jun-24	10:00AM	22-Jun-24	10:00AM	2.8050	2.8751	6927.8	6951.8	24	1.12	1.12	1.12	43.6	Sunny	152.4	260
27-Jun-24	10:00AM	28-Jun-24	10:00AM	2.8056	2.8921	6951.8	6975.8	24	1.12	1.12	1.12	53.7	Rainy	152.4	260

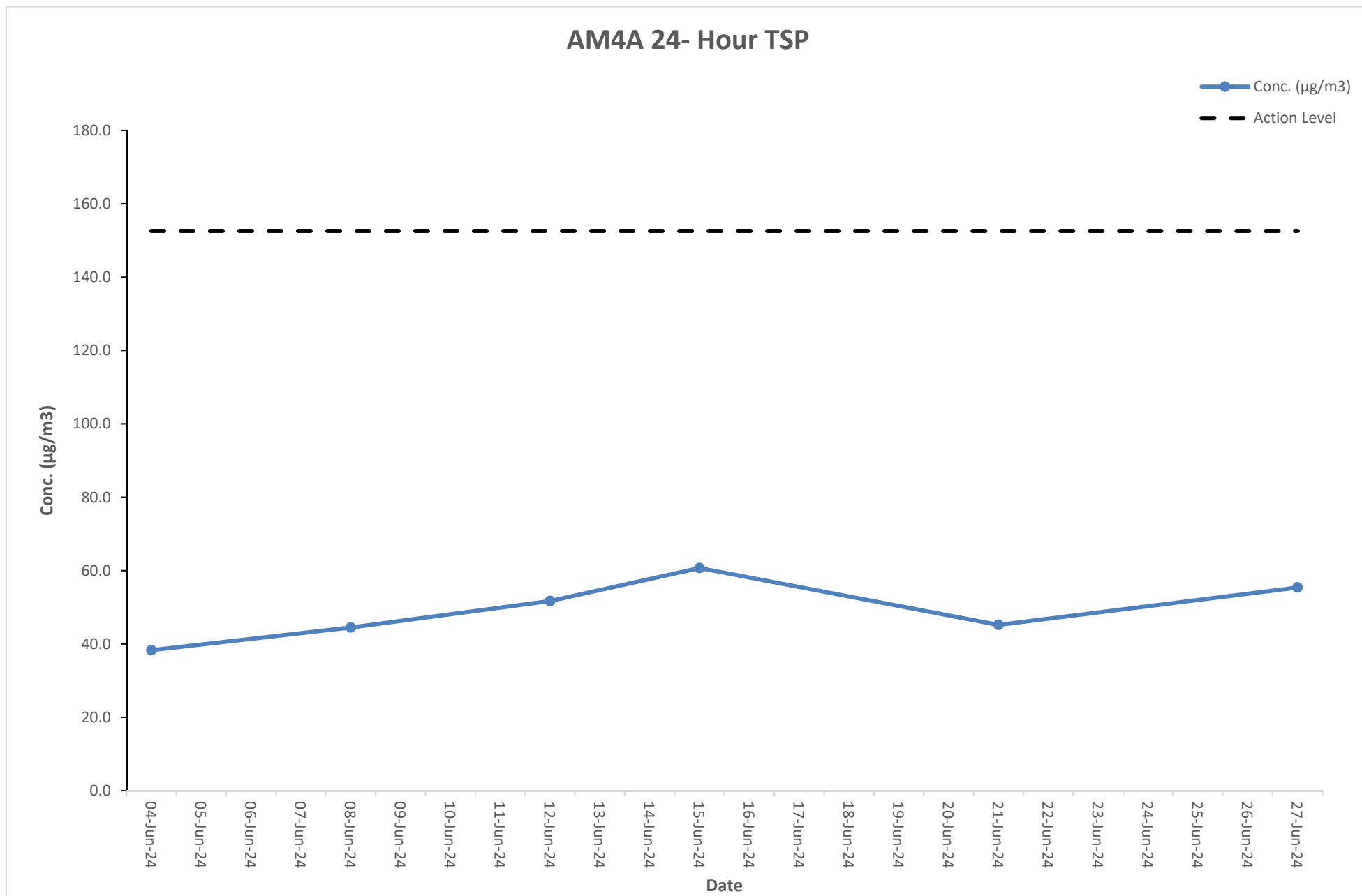
Graphical Presentation of Air Quality Monitoring Result at Station AM3A (24-hour TSP)



Air Quality Monitoring Result at Station AM4A (24-hour TSP)

Start		Finish		Filter Weight (g)		Elapsed Time Reading		Sampling Time (hrs)	Flow Rate (m ³ /min)			Conc. (µg/m3)	Weather Condition	Action Level	Limit Level
Date	Time	Date	Time	Initial	Final	Initial	Final		Initial	Final	Average				
04-Jun-24	10:00AM	05-Jun-24	10:00AM	2.8083	2.8699	7251.4	7275.4	24	1.12	1.12	1.12	38.3	Rainy	152.6	260
08-Jun-24	10:00AM	09-Jun-24	10:00AM	2.8062	2.8778	7275.4	7299.4	24	1.12	1.12	1.12	44.5	Rainy	152.6	260
12-Jun-24	10:00AM	13-Jun-24	10:00AM	2.8028	2.8859	7299.4	7323.4	24	1.12	1.12	1.12	51.7	Rainy	152.6	260
15-Jun-24	10:00AM	16-Jun-24	10:00AM	2.8079	2.9056	7323.4	7347.4	24	1.12	1.12	1.12	60.7	Rainy	152.6	260
21-Jun-24	10:00AM	22-Jun-24	10:00AM	2.8070	2.8797	7347.4	7371.4	24	1.12	1.12	1.12	45.2	Sunny	152.6	260
27-Jun-24	10:00AM	28-Jun-24	10:00AM	2.8086	2.8978	7371.4	7395.4	24	1.12	1.12	1.12	55.4	Rainy	152.6	260

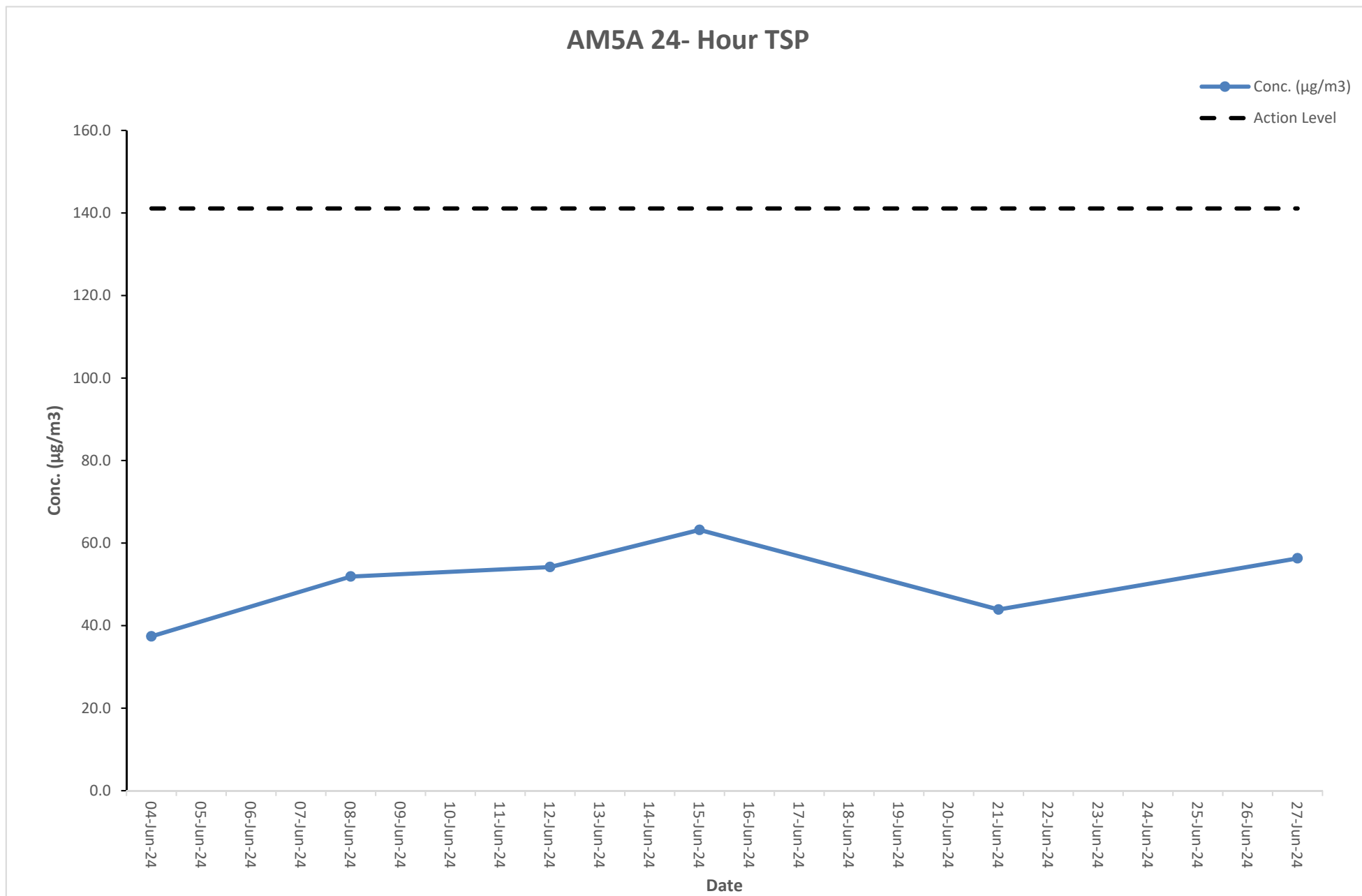
Graphical Presentation of Air Quality Monitoring Result at Station AM4A (24-hour TSP)



Air Quality Monitoring Result at Station AM5A (24-hour TSP)

Start		Finish		Filter Weight (g)		Elapsed Time Reading		Sampling Time (hrs)	Flow Rate (m ³ /min)			Conc. (µg/m ³)	Weather Condition	Action Level	Limit Level
Date	Time	Date	Time	Initial	Final	Initial	Final		Initial	Final	Average				
04-Jun-24	10:00AM	05-Jun-24	10:00AM	2.8054	2.8656	7389.6	7413.6	24	1.12	1.12	1.12	37.4	Rainy	141.1	260
08-Jun-24	10:00AM	09-Jun-24	10:00AM	2.8020	2.8855	7413.6	7437.6	24	1.12	1.12	1.12	51.9	Rainy	141.1	260
12-Jun-24	10:00AM	13-Jun-24	10:00AM	2.8080	2.8952	7437.6	7461.6	24	1.12	1.12	1.12	54.2	Rainy	141.1	260
15-Jun-24	10:00AM	16-Jun-24	10:00AM	2.8079	2.9097	7461.6	7485.6	24	1.12	1.12	1.12	63.2	Rainy	141.1	260
21-Jun-24	10:00AM	22-Jun-24	10:00AM	2.8085	2.8791	7485.6	7509.6	24	1.12	1.12	1.12	43.9	Sunny	141.1	260
27-Jun-24	10:00AM	28-Jun-24	10:00AM	2.8060	2.8966	7509.6	7533.6	24	1.12	1.12	1.12	56.3	Rainy	141.1	260

Graphical Presentation of Air Quality Monitoring Result at Station AM5A (24-hour TSP)



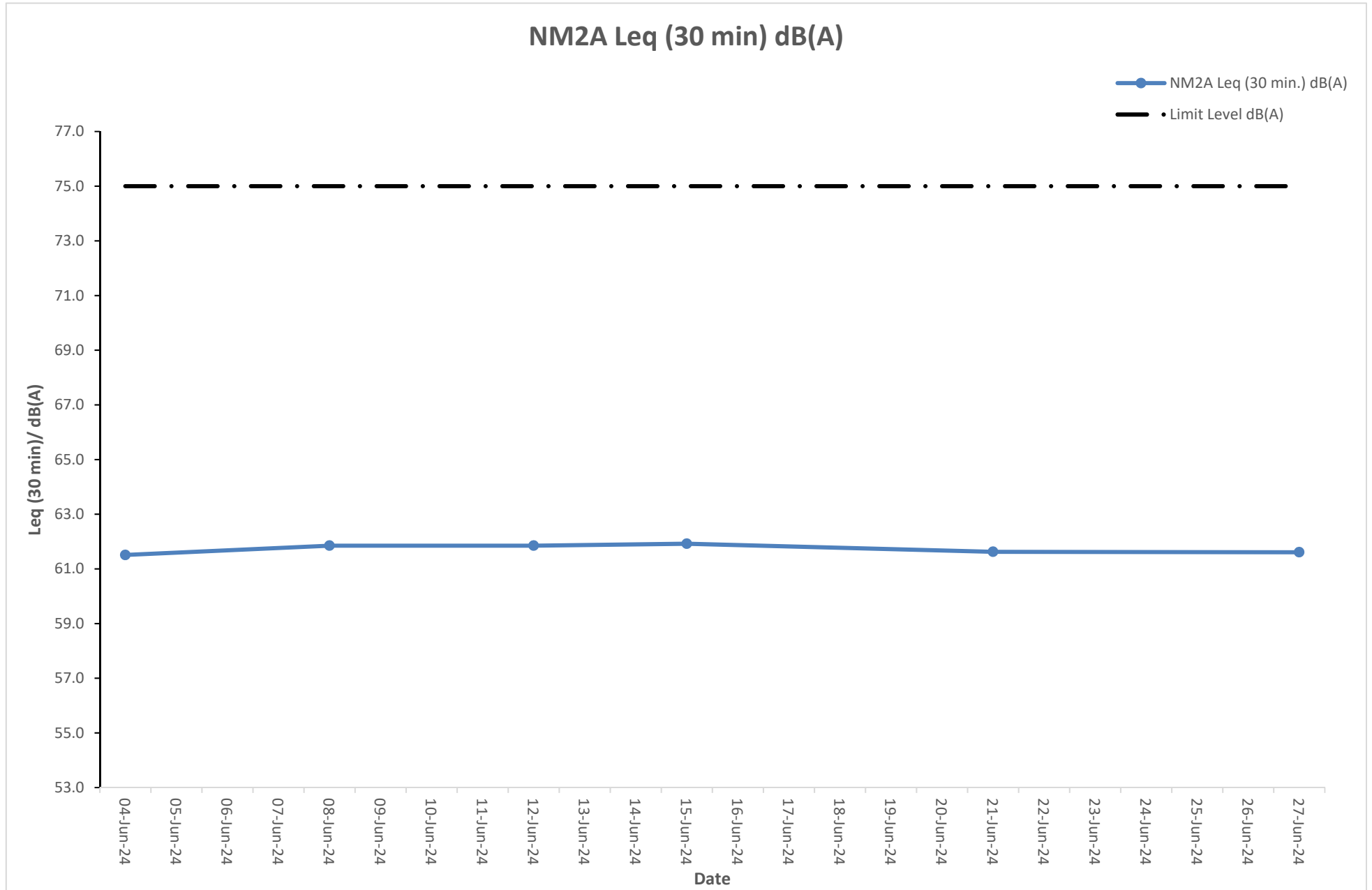
Noise Monitoring Result at Station NM2A

Date	Time	Measured L10 dB(A)	Measured L90 dB(A)	Leq (30 min.) dB(A)
04-Jun-24	8:35	63.6	60.4	61.5
04-Jun-24	8:40	63.9	59.5	
04-Jun-24	8:45	63.0	59.6	
04-Jun-24	8:50	64.0	59.8	
04-Jun-24	8:55	62.9	59.3	
04-Jun-24	9:00	63.3	59.8	
08-Jun-24	14:39	63.1	59.5	61.9
08-Jun-24	14:44	62.9	59.4	
08-Jun-24	14:49	63.9	60.3	
08-Jun-24	14:54	62.9	59.3	
08-Jun-24	14:59	64.0	60.3	
08-Jun-24	15:04	63.1	59.5	
12-Jun-24	8:32	63.9	59.7	61.8
12-Jun-24	8:37	63.1	59.3	
12-Jun-24	8:42	62.7	60.0	
12-Jun-24	8:47	62.8	60.3	
12-Jun-24	8:52	63.5	59.5	
12-Jun-24	8:57	62.8	59.8	
15-Jun-24	14:31	63.8	60.3	61.9
15-Jun-24	14:36	62.7	60.5	
15-Jun-24	14:41	62.8	59.5	
15-Jun-24	14:46	62.7	60.0	
15-Jun-24	14:51	64.0	59.5	
15-Jun-24	14:56	63.1	60.1	
21-Jun-24	8:37	63.8	60.4	61.6
21-Jun-24	8:42	63.0	59.6	
21-Jun-24	8:47	63.3	60.1	
21-Jun-24	8:52	63.5	60.0	
21-Jun-24	8:57	63.8	59.4	
21-Jun-24	9:02	63.0	60.0	
27-Jun-24	14:30	63.5	59.4	61.6
27-Jun-24	14:35	62.8	60.0	
27-Jun-24	14:40	62.9	60.1	
27-Jun-24	14:45	63.4	60.4	
27-Jun-24	14:50	63.4	60.4	
27-Jun-24	14:55	63.5	59.6	



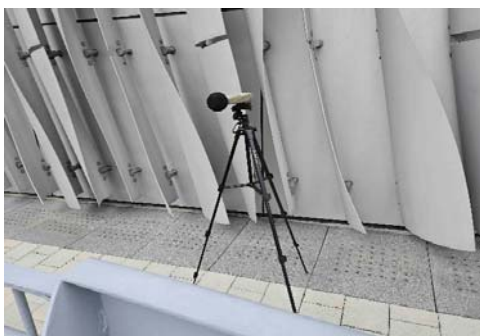
The station set-up of a façade measurement at station NM2A.

Graphical Presentation of Noise Monitoring Result at Station NM2A



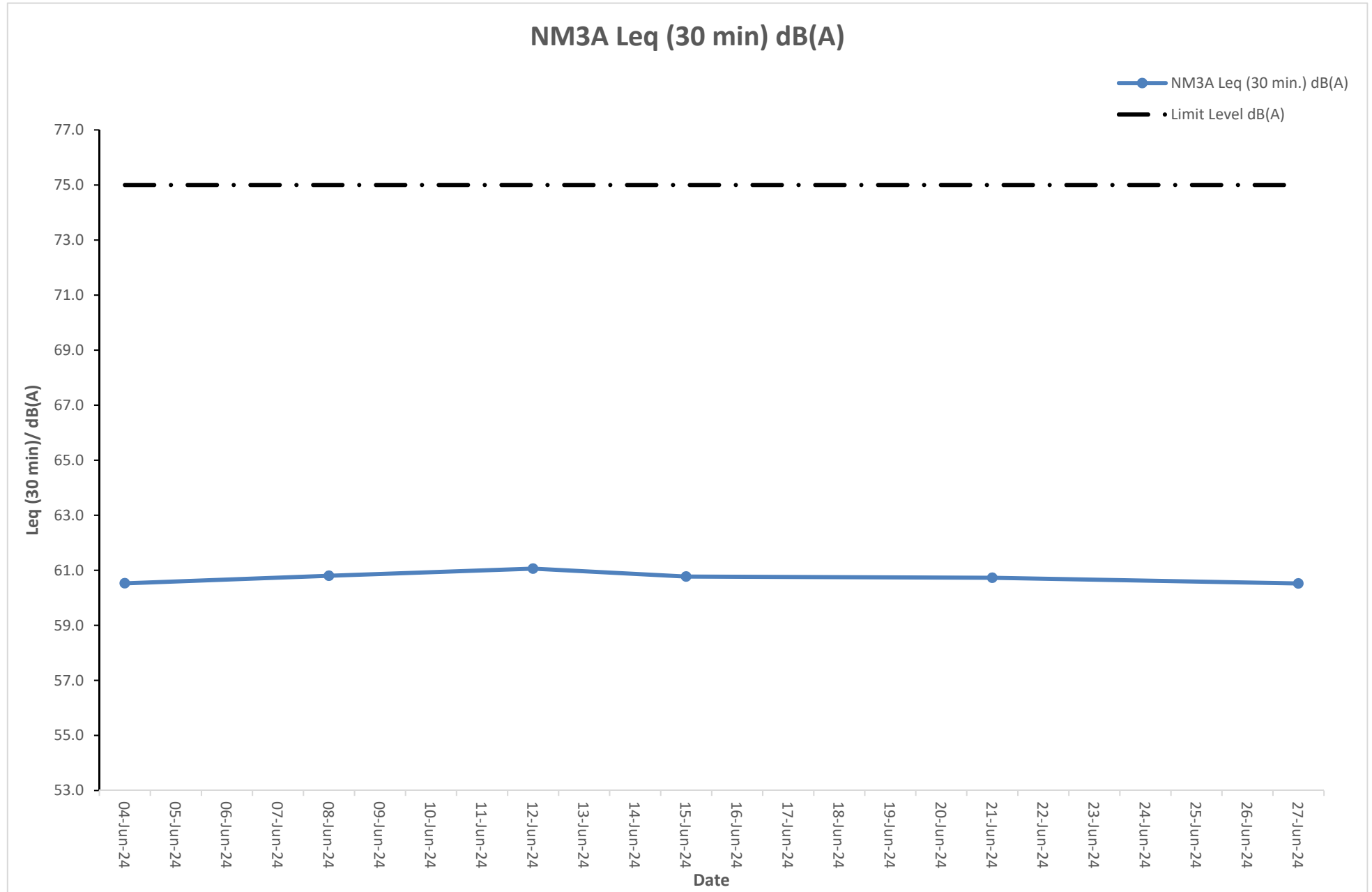
Noise Monitoring Result at Station NM3A

Date	Time	Measured L10 dB(A)	Measured L90 dB(A)	Leq (30 min.) dB(A)
04-Jun-24	10:05	63.1	57.6	60.5
04-Jun-24	10:10	61.9	56.8	
04-Jun-24	10:15	63.7	56.0	
04-Jun-24	10:20	62.5	57.3	
04-Jun-24	10:25	62.1	57.8	
04-Jun-24	10:30	62.1	57.7	
08-Jun-24	16:12	62.4	56.7	60.8
08-Jun-24	16:17	62.5	57.6	
08-Jun-24	16:22	62.0	57.5	
08-Jun-24	16:27	62.0	56.3	
08-Jun-24	16:32	62.4	56.0	
08-Jun-24	16:37	62.3	56.9	
12-Jun-24	10:02	63.1	56.9	61.1
12-Jun-24	10:07	61.9	56.4	
12-Jun-24	10:12	62.7	57.5	
12-Jun-24	10:17	62.2	57.1	
12-Jun-24	10:22	63.0	57.1	
12-Jun-24	10:27	62.6	57.3	
15-Jun-24	16:04	62.8	57.4	60.8
15-Jun-24	16:09	62.8	57.0	
15-Jun-24	16:14	62.5	56.4	
15-Jun-24	16:19	62.7	57.1	
15-Jun-24	16:24	62.0	55.9	
15-Jun-24	16:29	62.0	57.4	
21-Jun-24	10:07	63.2	57.2	60.7
21-Jun-24	10:12	62.6	57.5	
21-Jun-24	10:17	63.8	56.5	
21-Jun-24	10:22	63.0	56.1	
21-Jun-24	10:27	63.5	56.7	
21-Jun-24	10:32	62.3	56.8	
27-Jun-24	16:12	63.4	56.7	60.5
27-Jun-24	16:17	62.1	56.1	
27-Jun-24	16:22	61.9	56.6	
27-Jun-24	16:27	63.4	56.2	
27-Jun-24	16:32	63.3	56.5	
27-Jun-24	16:37	62.5	56.1	



The station set-up of a façade measurement at station NM3A.

Graphical Presentation of Noise Monitoring Result at Station NM3A



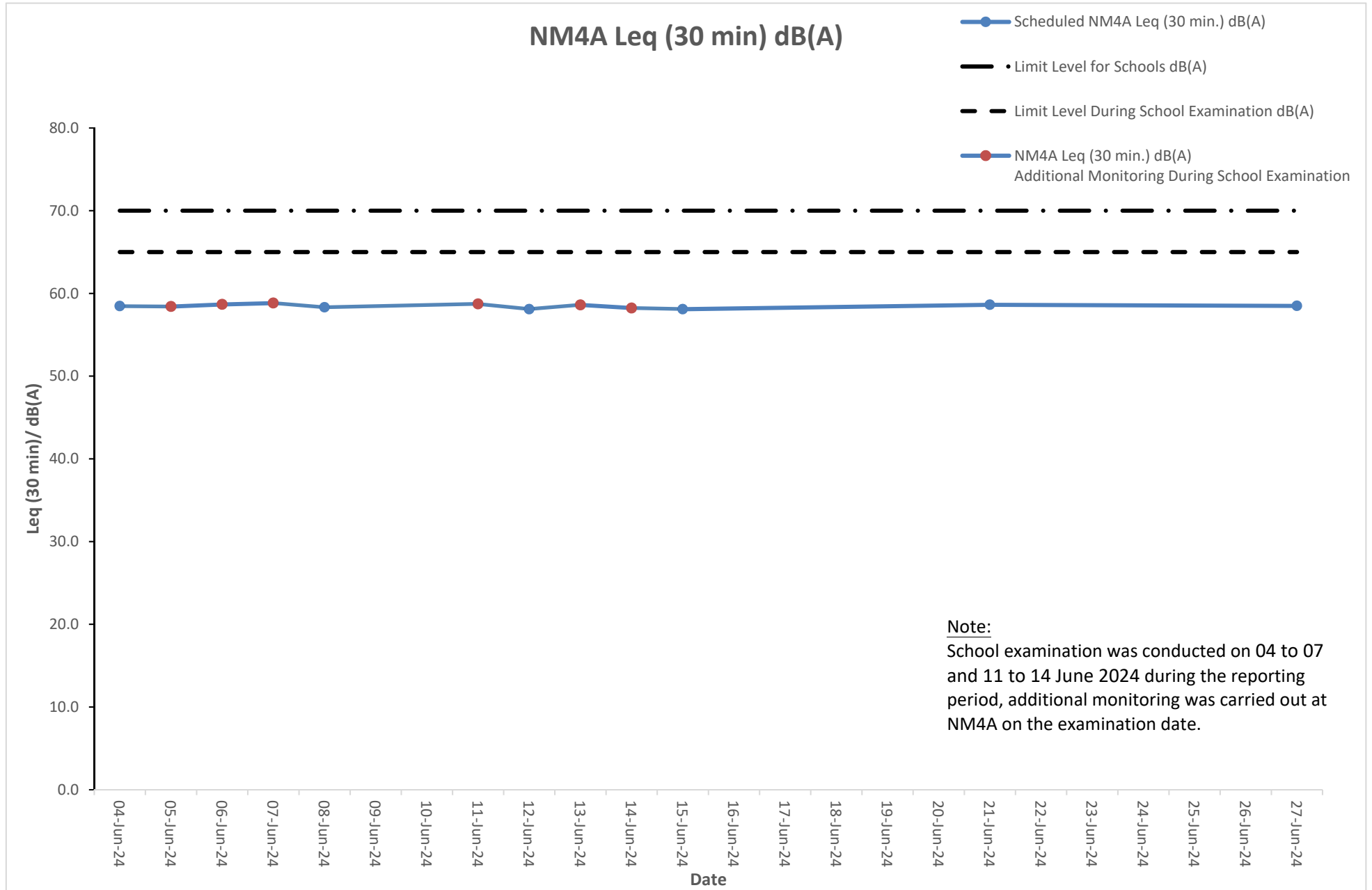
Noise Monitoring Result at Station NM4A

Date	Time	Measured L10 dB(A)	Measured L90 dB(A)	Leq (30 min.) dB(A)
04-Jun-24	10:40	59.6	56.2	58.5
04-Jun-24	10:45	60.4	55.8	
04-Jun-24	10:50	60.3	56.2	
04-Jun-24	10:55	59.3	56.0	
04-Jun-24	11:00	59.4	56.4	
04-Jun-24	11:05	60.6	56.9	
08-Jun-24	16:47	59.4	56.9	58.3
08-Jun-24	16:52	59.3	56.5	
08-Jun-24	16:57	59.7	57.1	
08-Jun-24	17:02	60.0	56.1	
08-Jun-24	17:07	60.3	56.4	
08-Jun-24	17:12	59.4	55.8	
12-Jun-24	10:37	59.2	56.8	58.1
12-Jun-24	10:42	59.7	56.4	
12-Jun-24	10:47	60.5	56.5	
12-Jun-24	10:52	59.8	56.0	
12-Jun-24	10:57	59.2	56.1	
12-Jun-24	11:02	59.3	56.8	
15-Jun-24	16:39	60.5	56.2	58.1
15-Jun-24	16:44	60.0	55.9	
15-Jun-24	16:49	59.6	55.9	
15-Jun-24	16:54	59.3	56.1	
15-Jun-24	16:59	59.5	56.4	
15-Jun-24	17:04	60.0	56.7	
21-Jun-24	10:42	60.1	56.4	58.6
21-Jun-24	10:47	59.6	56.1	
21-Jun-24	10:52	60.4	56.8	
21-Jun-24	10:57	59.7	55.7	
21-Jun-24	11:02	60.0	55.8	
21-Jun-24	11:07	60.6	56.6	
27-Jun-24	16:47	60.5	55.9	58.5
27-Jun-24	16:52	60.3	56.8	
27-Jun-24	16:57	60.4	56.2	
27-Jun-24	17:02	59.8	55.9	
27-Jun-24	17:07	60.1	55.9	
27-Jun-24	17:12	59.2	56.8	



The station set-up of a façade measurement at station NM4A.

Graphical Presentation of Noise Monitoring Result at Station NM4A



Noise Monitoring Result at Station NM5A

Date	Time	Measured L10 dB(A)	Measured L90 dB(A)	Leq (30 min.) dB(A)	Leq (30 min.) +3 dB(A)
04-Jun-24	9:25	61.9	59.2	60.5	63.5
04-Jun-24	9:30	61.7	57.8		
04-Jun-24	9:35	61.4	58.5		
04-Jun-24	9:40	62.0	58.9		
04-Jun-24	9:45	62.4	57.8		
04-Jun-24	9:50	61.4	57.9		
08-Jun-24	15:31	61.4	57.9	60.5	63.5
08-Jun-24	15:36	62.7	58.3		
08-Jun-24	15:41	61.7	58.1		
08-Jun-24	15:46	62.2	57.6		
08-Jun-24	15:51	61.7	59.3		
08-Jun-24	15:56	62.0	58.0		
12-Jun-24	9:22	61.8	58.9	60.2	63.2
12-Jun-24	9:27	61.5	57.7		
12-Jun-24	9:32	62.0	58.9		
12-Jun-24	9:37	61.4	57.4		
12-Jun-24	9:42	62.8	58.9		
12-Jun-24	9:47	62.6	58.2		
15-Jun-24	15:23	61.7	58.5	60.6	63.6
15-Jun-24	15:28	62.0	57.4		
15-Jun-24	15:33	61.9	58.3		
15-Jun-24	15:38	62.0	57.9		
15-Jun-24	15:43	62.6	58.1		
15-Jun-24	15:48	61.5	58.1		
21-Jun-24	9:27	62.2	58.2	60.5	63.5
21-Jun-24	9:32	61.4	59.0		
21-Jun-24	9:37	62.1	57.8		
21-Jun-24	9:42	61.9	58.5		
21-Jun-24	9:47	62.8	59.1		
21-Jun-24	9:52	61.8	57.4		
27-Jun-24	15:31	61.4	57.6	60.6	63.6
27-Jun-24	15:36	62.7	57.6		
27-Jun-24	15:41	62.4	58.9		
27-Jun-24	15:46	62.6	58.6		
27-Jun-24	15:51	61.6	59.3		
27-Jun-24	15:56	61.8	57.4		

Remarks:

+3dB(A) correction was applied to free-field measurement.



The station set-up of a free-field measurement at station NM5A.

Graphical Presentation of Noise Monitoring Result at Station NM5A

