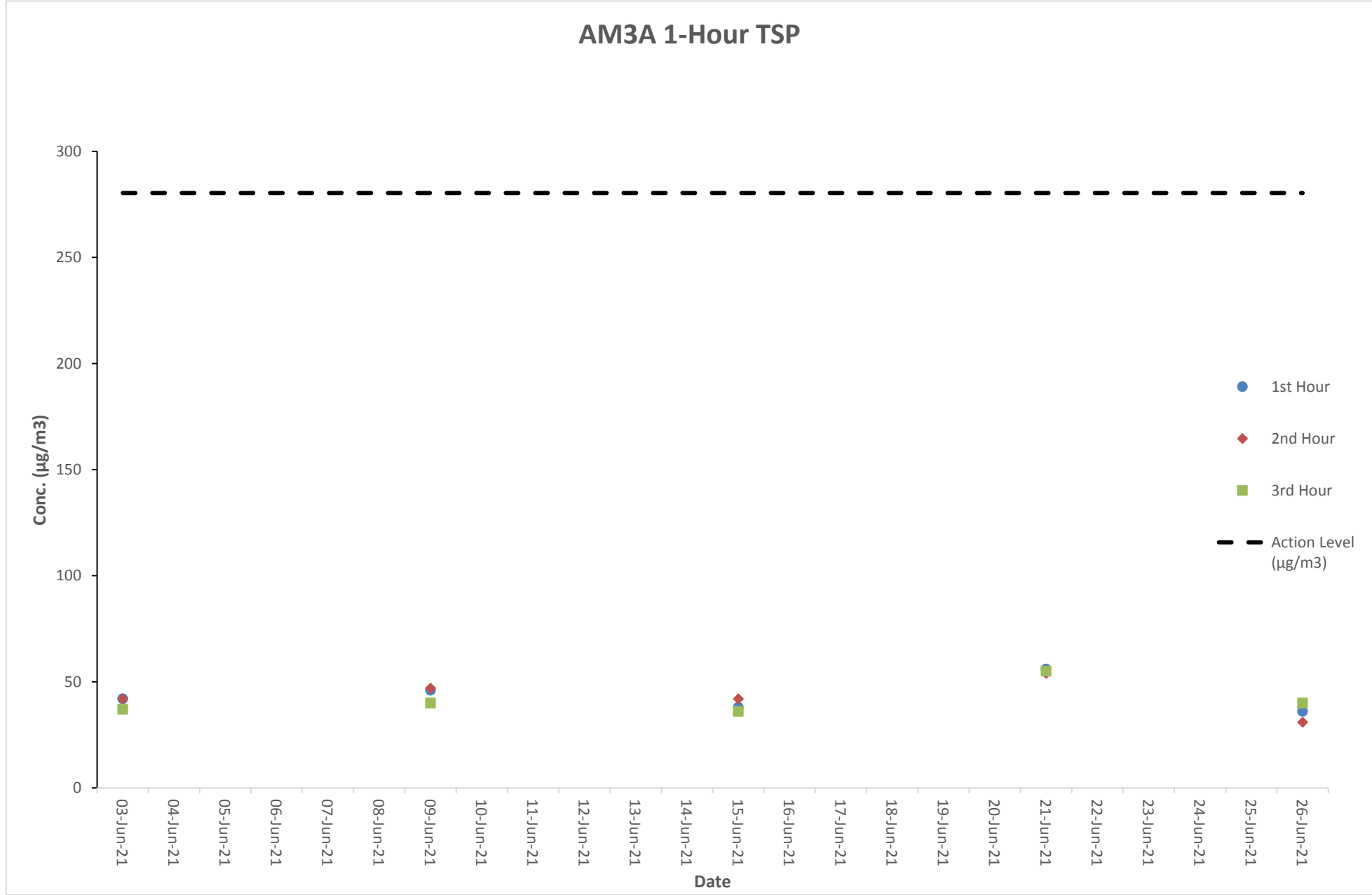


Air Quality Monitoring Result at Station AM3A (1-hour TSP)

Date	Weather Condition	Time		Conc. (µg/m3)			Action Level	Limit Level
		Start	Finish	1st Hour	2nd Hour	3rd Hour		
03-Jun-21	Fine	14:02	17:02	42	42	37	280.4	500
09-Jun-21	Cloudy	8:01	11:01	46	47	40	280.4	500
15-Jun-21	Cloudy	14:01	17:01	38	42	36	280.4	500
21-Jun-21	Cloudy	8:03	11:03	56	54	55	280.4	500
26-Jun-21	Cloudy	14:00	17:00	36	31	40	280.4	500

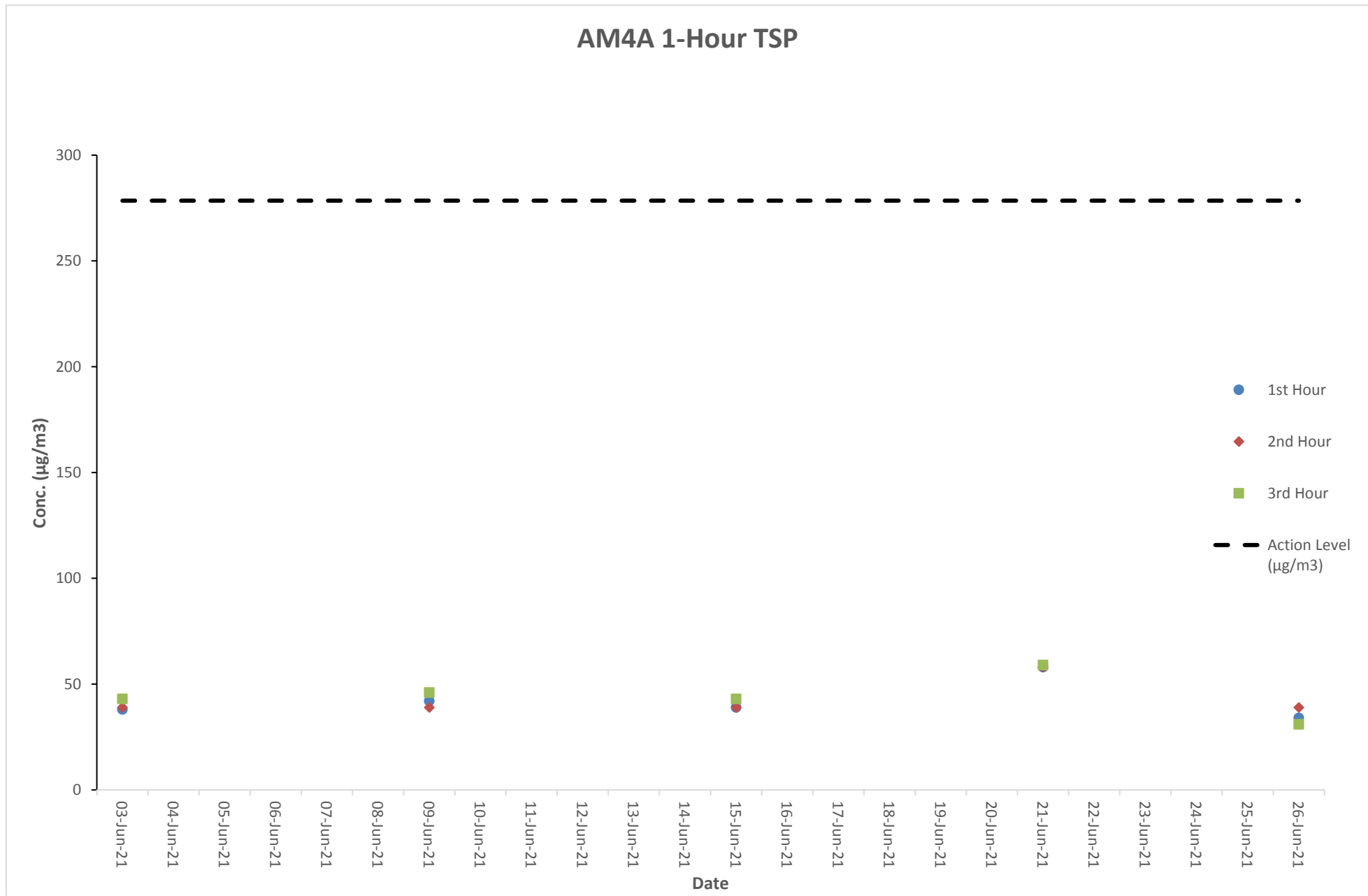
Graphical Presentation of Air Quality Monitoring Result at Station AM3A (1-hour TSP)



Air Quality Monitoring Result at Station AM4A (1-hour TSP)

Date	Weather Condition	Time		Conc. (µg/m3)			Action Level	Limit Level
		Start	Finish	1st Hour	2nd Hour	3rd Hour		
03-Jun-21	Fine	14:10	17:10	38	39	43	278.5	500
09-Jun-21	Cloudy	8:09	11:09	42	39	46	278.5	500
15-Jun-21	Cloudy	14:09	17:09	39	39	43	278.5	500
21-Jun-21	Cloudy	8:11	11:11	58	58	59	278.5	500
26-Jun-21	Cloudy	14:08	17:08	34	39	31	278.5	500

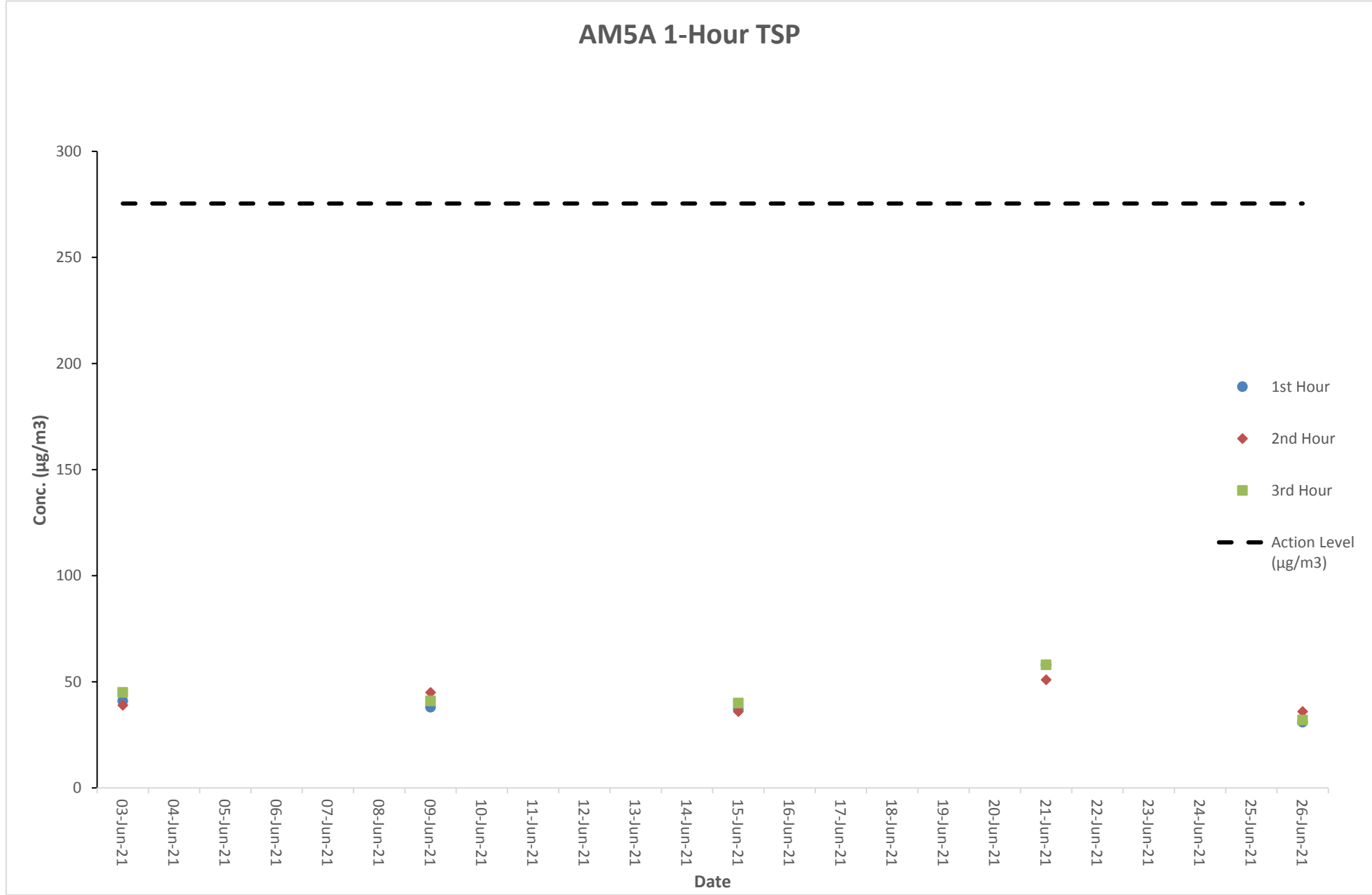
Graphical Presentation of Air Quality Monitoring Result at Station AM4A (1-hour TSP)



Air Quality Monitoring Result at Station AM5A (1-hour TSP)

Date	Weather Condition	Time		Conc. (µg/m3)			Action Level	Limit Level
		Start	Finish	1st Hour	2nd Hour	3rd Hour		
03-Jun-21	Fine	14:25	17:25	41	39	45	275.4	500
09-Jun-21	Cloudy	8:26	11:26	38	45	41	275.4	500
15-Jun-21	Cloudy	14:24	17:24	37	36	40	275.4	500
21-Jun-21	Cloudy	8:28	11:28	58	51	58	275.4	500
26-Jun-21	Cloudy	14:23	17:23	31	36	32	275.4	500

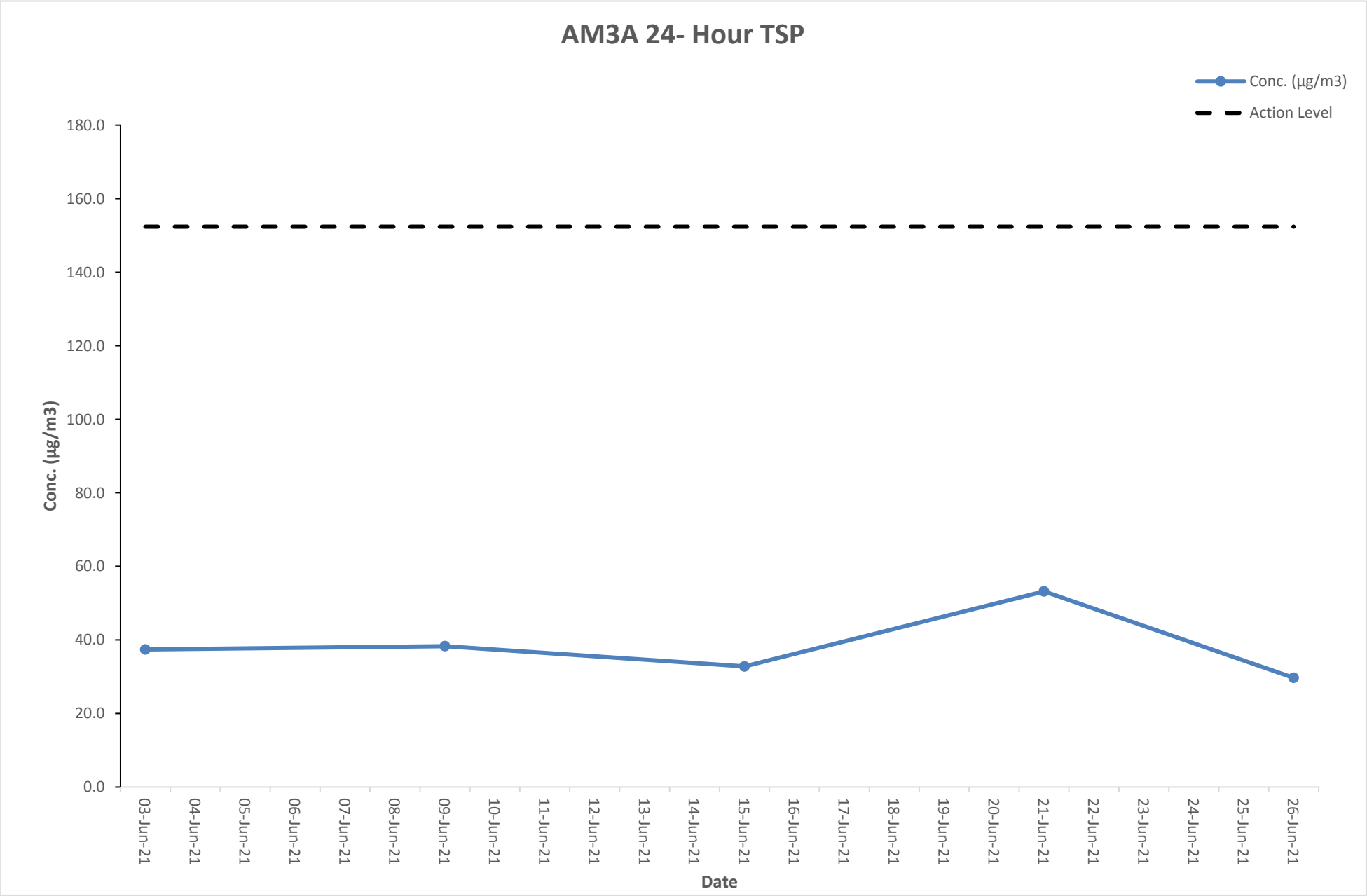
Graphical Presentation of Air Quality Monitoring Result at Station AM5A (1-hour TSP)



Air Quality Monitoring Result at Station AM3A (24-hour TSP)

Start		Finish		Filter Weight (g)		Elapsed Time Reading		Sampling Time (hrs)	Flow Rate (m ³ /min)			Conc. (µg/m3)	Weather Condition	Action Level	Limit Level
Date	Time	Date	Time	Initial	Final	Initial	Final		Initial	Final	Average				
03-Jun-21	10:00AM	04-Jun-21	10:00AM	2.8077	2.8679	2060.8	2084.8	24	1.12	1.12	1.12	37.4	Sunny	152.4	260
09-Jun-21	10:00AM	10-Jun-21	10:00AM	2.8075	2.8691	2084.8	2108.8	24	1.12	1.12	1.12	38.3	Rainy	152.4	260
15-Jun-21	10:00AM	16-Jun-21	10:00AM	2.8090	2.8617	2108.8	2132.8	24	1.12	1.12	1.12	32.8	Rainy	152.4	260
21-Jun-21	10:00AM	22-Jun-21	10:00AM	2.8069	2.8926	2132.8	2156.8	24	1.12	1.12	1.12	53.2	Cloudy	152.4	260
26-Jun-21	10:00AM	27-Jun-21	10:00AM	2.8051	2.8528	2156.8	2180.8	24	1.12	1.12	1.12	29.7	Rainy	152.4	260

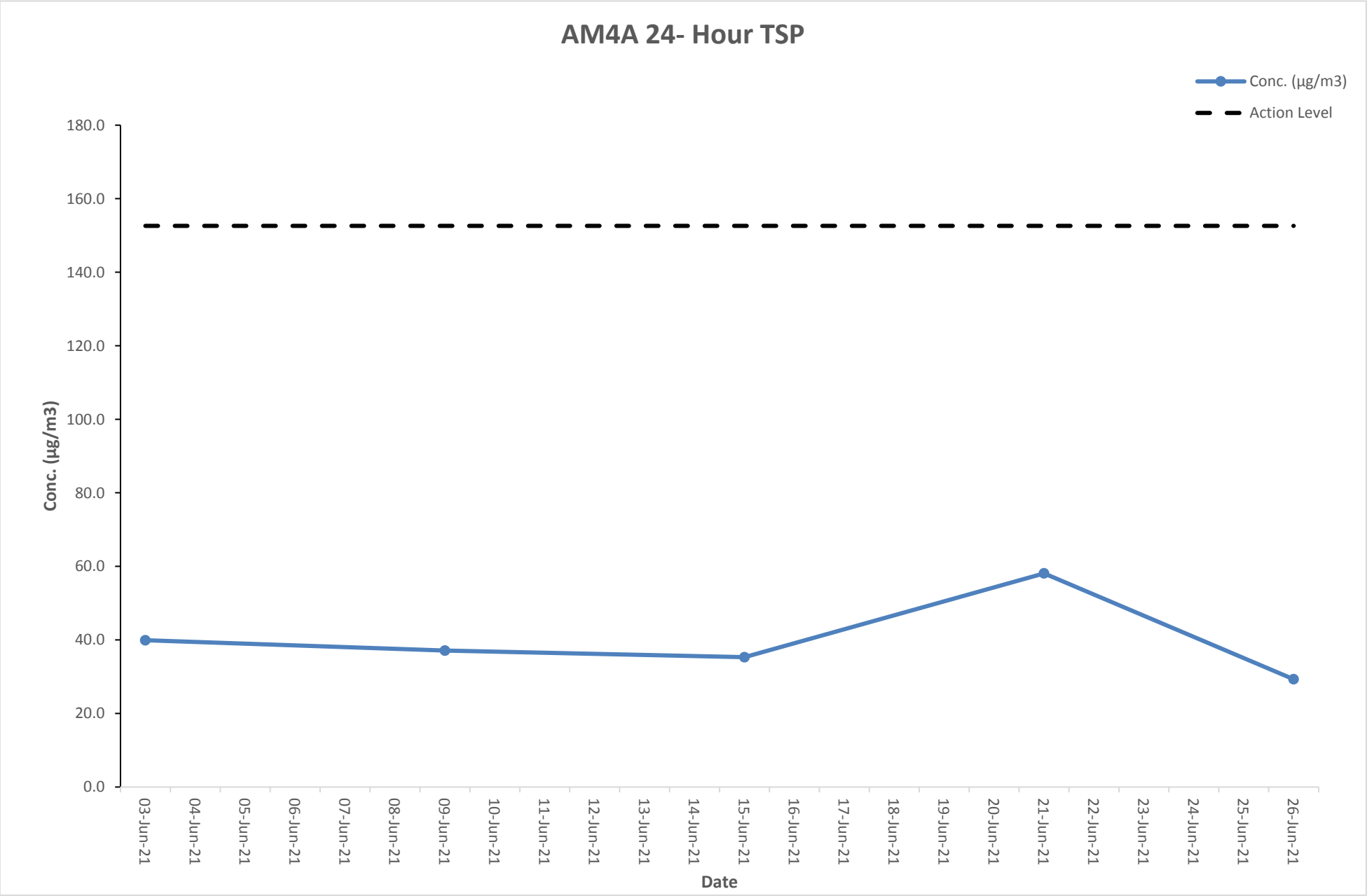
Graphical Presentation of Air Quality Monitoring Result at Station AM3A (24-hour TSP)



Air Quality Monitoring Result at Station AM4A (24-hour TSP)

Start		Finish		Filter Weight (g)		Elapsed Time Reading		Sampling Time (hrs)	Flow Rate (m ³ /min)			Conc. (µg/m3)	Weather Condition	Action Level	Limit Level
Date	Time	Date	Time	Initial	Final	Initial	Final		Initial	Final	Average				
03-Jun-21	10:00AM	04-Jun-21	10:00AM	2.8054	2.8696	2480.4	2504.4	24	1.12	1.12	1.12	39.9	Sunny	152.6	260
09-Jun-21	10:00AM	10-Jun-21	10:00AM	2.8038	2.8636	2504.4	2528.4	24	1.12	1.12	1.12	37.1	Rainy	152.6	260
15-Jun-21	10:00AM	16-Jun-21	10:00AM	2.8016	2.8584	2528.4	2552.4	24	1.12	1.12	1.12	35.3	Rainy	152.6	260
21-Jun-21	10:00AM	22-Jun-21	10:00AM	2.8040	2.8975	2552.4	2576.4	24	1.12	1.12	1.12	58.1	Cloudy	152.6	260
26-Jun-21	10:00AM	27-Jun-21	10:00AM	2.8037	2.8508	2576.4	2600.4	24	1.12	1.12	1.12	29.3	Rainy	152.6	260

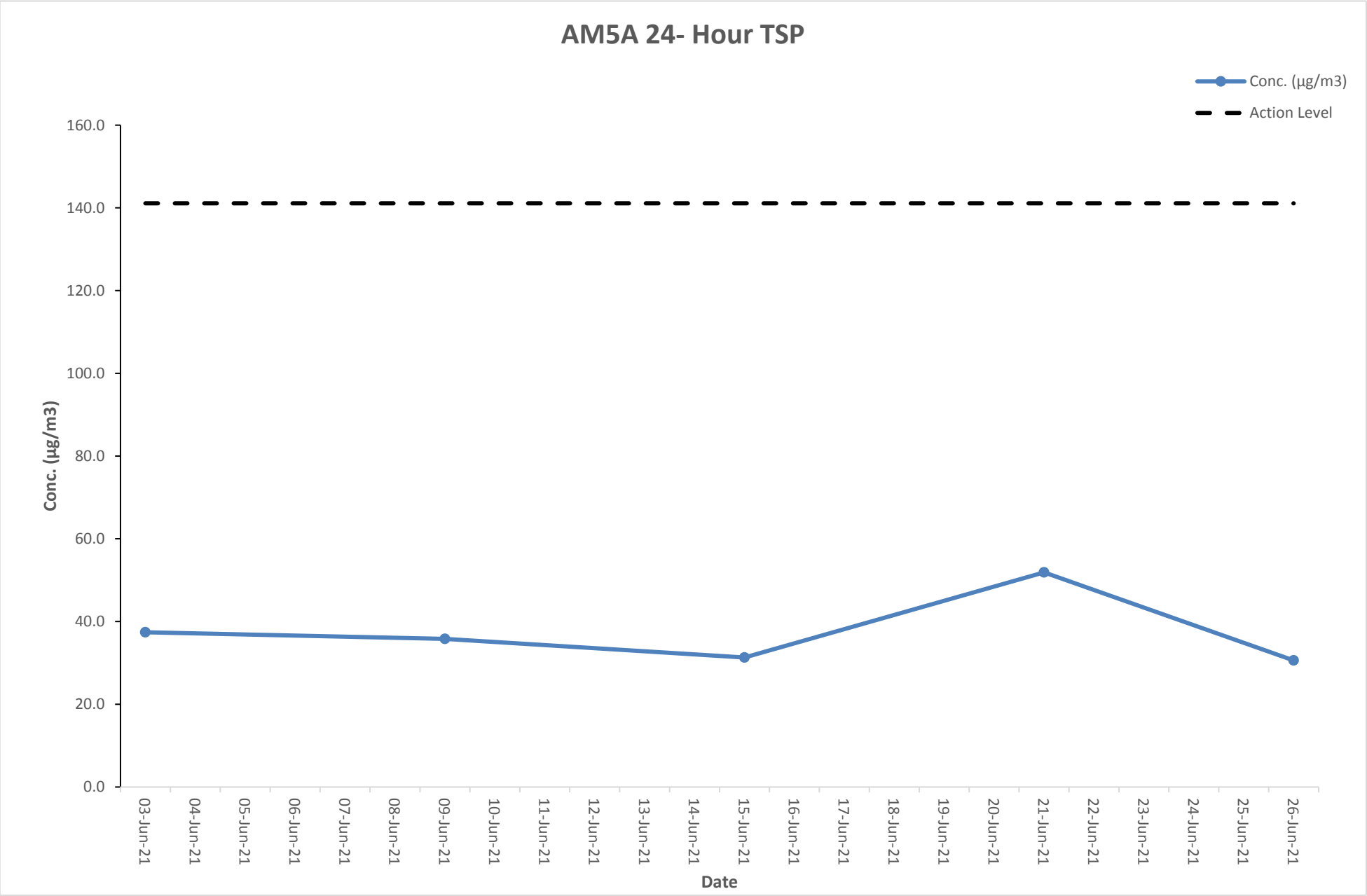
Graphical Presentation of Air Quality Monitoring Result at Station AM4A (24-hour TSP)



Air Quality Monitoring Result at Station AM5A (24-hour TSP)

Start		Finish		Filter Weight (g)		Elapsed Time Reading		Sampling Time (hrs)	Flow Rate (m ³ /min)			Conc. (µg/m3)	Weather Condition	Action Level	Limit Level
Date	Time	Date	Time	Initial	Final	Initial	Final		Initial	Final	Average				
03-Jun-21	10:00AM	04-Jun-21	10:00AM	2.8074	2.8676	2620.6	2644.6	24	1.12	1.12	1.12	37.4	Sunny	141.1	260
09-Jun-21	10:00AM	10-Jun-21	10:00AM	2.8052	2.8628	2644.6	2668.6	24	1.12	1.12	1.12	35.8	Rainy	141.1	260
15-Jun-21	10:00AM	16-Jun-21	10:00AM	2.8042	2.8545	2668.6	2692.6	24	1.12	1.12	1.12	31.3	Rainy	141.1	260
21-Jun-21	10:00AM	22-Jun-21	10:00AM	2.8028	2.8863	2692.6	2716.6	24	1.12	1.12	1.12	51.9	Cloudy	141.1	260
26-Jun-21	10:00AM	27-Jun-21	10:00AM	2.8013	2.8506	2716.6	2740.6	24	1.12	1.12	1.12	30.6	Rainy	141.1	260

Graphical Presentation of Air Quality Monitoring Result at Station AM5A (24-hour TSP)



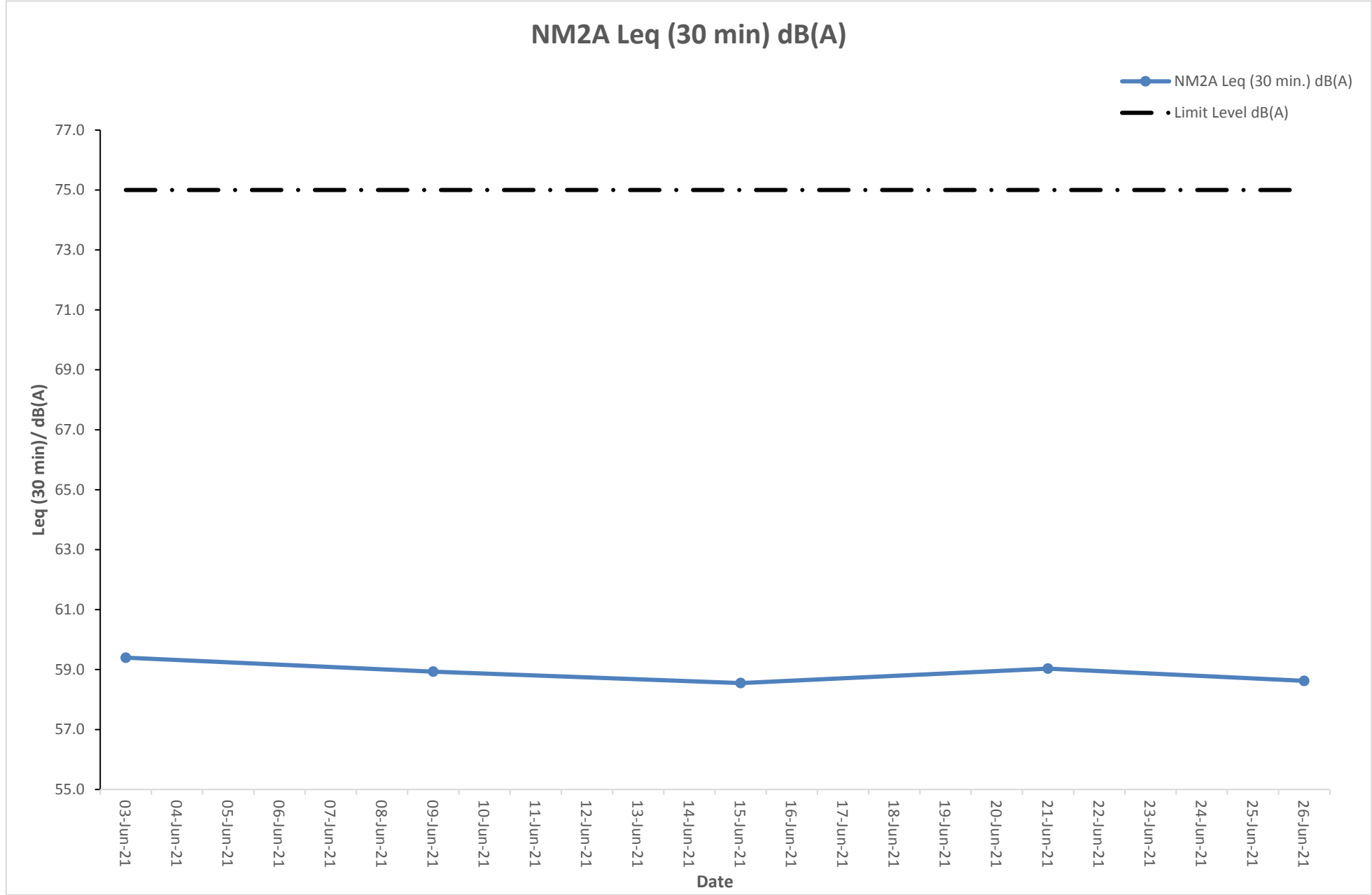
Noise Monitoring Result at Station NM2A

Date	Time	Measured L10 dB(A)	Measured L90 dB(A)	Leq (30 min.) dB(A)
03-Jun-21	14:32	62.3	56.5	59.4
03-Jun-21	14:37	64.4	55.9	
03-Jun-21	14:42	64.0	55.3	
03-Jun-21	14:47	64.1	55.0	
03-Jun-21	14:52	62.6	54.1	
03-Jun-21	14:57	64.2	54.6	
09-Jun-21	8:31	63.4	54.2	58.9
09-Jun-21	8:36	64.3	55.4	
09-Jun-21	8:41	62.4	56.1	
09-Jun-21	8:46	64.5	56.3	
09-Jun-21	8:51	62.5	55.9	
09-Jun-21	8:56	62.9	54.5	
15-Jun-21	14:31	63.7	55.7	58.6
15-Jun-21	14:36	64.4	56.0	
15-Jun-21	14:41	64.0	56.8	
15-Jun-21	14:46	64.0	56.8	
15-Jun-21	14:51	64.3	54.5	
15-Jun-21	14:56	62.6	55.3	
21-Jun-21	8:33	62.1	54.1	59.0
21-Jun-21	8:38	62.6	54.6	
21-Jun-21	8:43	62.7	55.4	
21-Jun-21	8:48	64.1	54.8	
21-Jun-21	8:53	63.4	56.0	
21-Jun-21	8:58	63.0	54.7	
26-Jun-21	14:30	63.1	55.3	58.6
26-Jun-21	14:35	63.8	56.1	
26-Jun-21	14:40	63.9	55.9	
26-Jun-21	14:45	64.5	56.6	
26-Jun-21	14:50	62.7	56.7	
26-Jun-21	14:55	64.0	54.3	



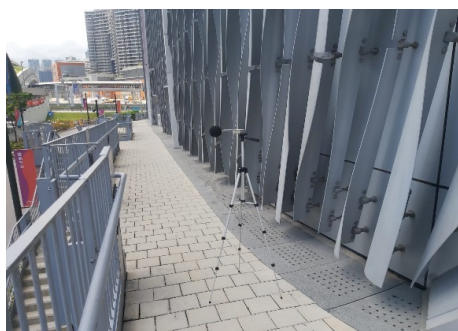
The station set-up of a façade measurement at station NM2A.

Graphical Presentation of Noise Monitoring Result at Station NM2A



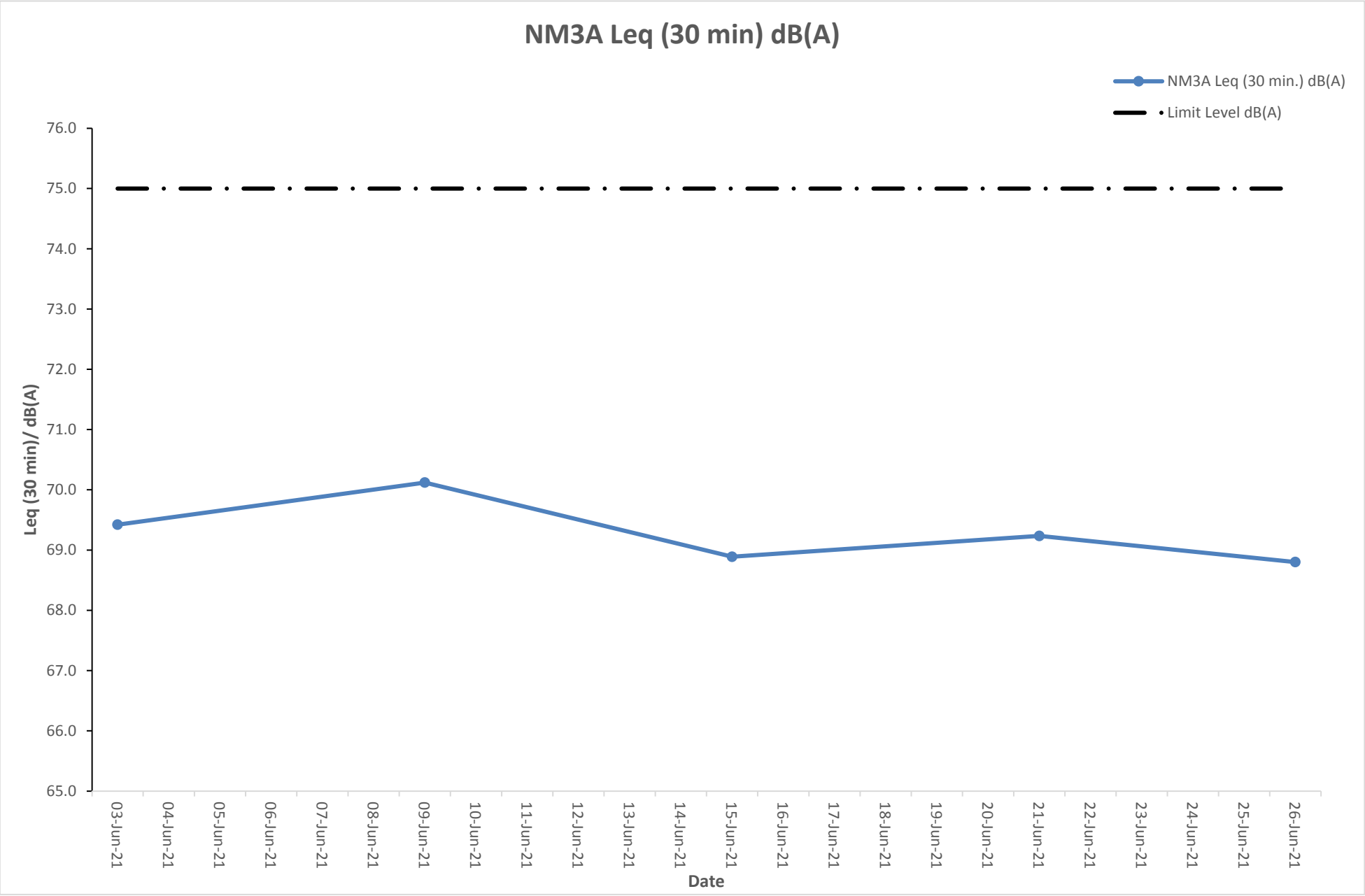
Noise Monitoring Result at Station NM3A

Date	Time	Measured L10 dB(A)	Measured L90 dB(A)	Leq (30 min.) dB(A)
03-Jun-21	16:02	73.0	66.7	69.4
03-Jun-21	16:07	73.1	67.3	
03-Jun-21	16:12	74.1	66.6	
03-Jun-21	16:17	73.2	67.4	
03-Jun-21	16:22	73.5	66.5	
03-Jun-21	16:27	72.7	66.7	
09-Jun-21	10:04	72.2	65.2	70.1
09-Jun-21	10:09	73.5	66.9	
09-Jun-21	10:14	72.0	66.6	
09-Jun-21	10:19	72.4	66.6	
09-Jun-21	10:24	72.0	67.9	
09-Jun-21	10:29	72.1	65.0	
15-Jun-21	16:01	72.6	65.5	68.9
15-Jun-21	16:06	72.8	67.7	
15-Jun-21	16:11	71.7	65.1	
15-Jun-21	16:16	71.4	65.5	
15-Jun-21	16:21	73.1	66.3	
15-Jun-21	16:26	73.2	66.5	
21-Jun-21	10:06	71.6	65.0	69.2
21-Jun-21	10:11	73.3	66.8	
21-Jun-21	10:16	74.0	65.0	
21-Jun-21	10:21	73.6	65.0	
21-Jun-21	10:26	72.2	66.4	
21-Jun-21	10:31	71.6	66.9	
26-Jun-21	16:00	72.8	66.5	68.8
26-Jun-21	16:05	73.5	65.0	
26-Jun-21	16:10	73.4	65.9	
26-Jun-21	16:15	73.5	67.7	
26-Jun-21	16:20	73.4	67.9	
26-Jun-21	16:25	72.0	65.3	



The station set-up of a façade measurement at station NM3A.

Graphical Presentation of Noise Monitoring Result at Station NM3A



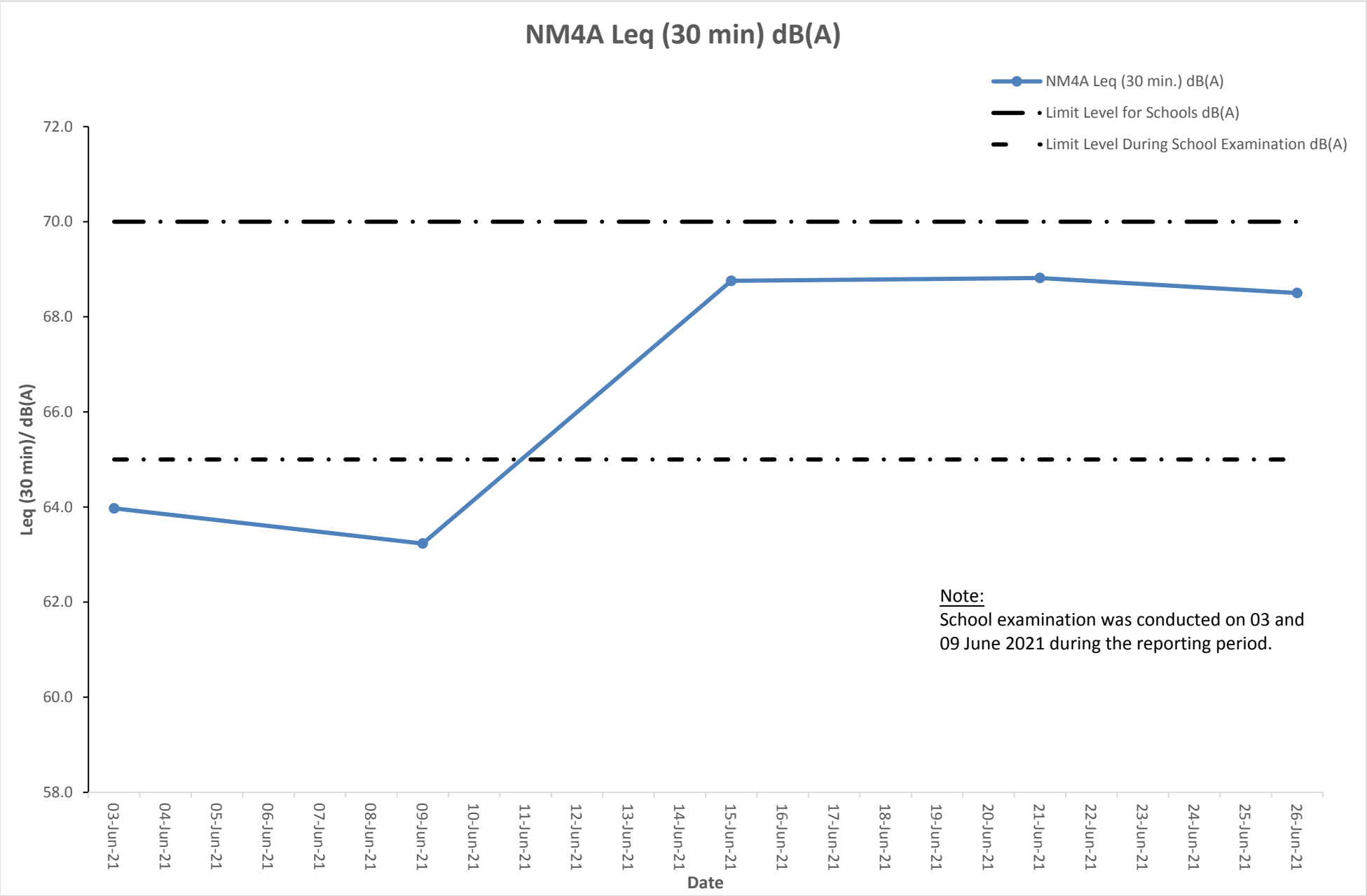
Noise Monitoring Result at Station NM4A

Date	Time	Measured L10 dB(A)	Measured L90 dB(A)	Leq (30 min.) dB(A)
03-Jun-21	16:37	70.3	61.5	64.0
03-Jun-21	16:42	69.8	62.7	
03-Jun-21	16:47	70.5	61.2	
03-Jun-21	16:52	69.3	61.4	
03-Jun-21	16:57	71.8	62.4	
03-Jun-21	17:02	71.1	63.9	
09-Jun-21	10:39	69.9	63.0	63.2
09-Jun-21	10:44	69.9	61.9	
09-Jun-21	10:49	70.1	60.4	
09-Jun-21	10:54	69.4	62.5	
09-Jun-21	10:59	69.5	63.2	
09-Jun-21	11:04	70.9	63.7	
15-Jun-21	16:36	69.9	64.1	68.8
15-Jun-21	16:41	71.3	66.3	
15-Jun-21	16:46	70.5	65.8	
15-Jun-21	16:51	70.2	64.7	
15-Jun-21	16:56	70.5	65.0	
15-Jun-21	17:01	71.2	66.6	
21-Jun-21	10:41	70.0	66.1	68.8
21-Jun-21	10:46	69.8	64.4	
21-Jun-21	10:51	71.5	65.8	
21-Jun-21	10:56	71.2	64.6	
21-Jun-21	11:01	69.3	64.2	
21-Jun-21	11:06	71.6	64.5	
26-Jun-21	16:35	71.0	66.4	68.5
26-Jun-21	16:40	71.7	64.4	
26-Jun-21	16:45	70.3	65.0	
26-Jun-21	16:50	69.2	65.5	
26-Jun-21	16:55	69.6	66.5	
26-Jun-21	17:00	71.3	65.5	



The station set-up of a façade measurement at station NM4A.

Graphical Presentation of Noise Monitoring Result at Station NM4A



Noise Monitoring Result at Station NM5A

Date	Time	Measured L10 dB(A)	Measured L90 dB(A)	Leq (30 min.) dB(A)	Leq (30 min.) +3 dB(A)
03-Jun-21	15:22	66.1	59.9	63.1	66.1
03-Jun-21	15:27	64.5	59.7		
03-Jun-21	15:32	66.4	60.1		
03-Jun-21	15:37	66.6	60.4		
03-Jun-21	15:42	64.4	59.8		
03-Jun-21	15:47	64.9	59.4		
09-Jun-21	9:23	66.8	59.7	62.6	65.6
09-Jun-21	9:28	67.0	60.4		
09-Jun-21	9:33	64.5	58.6		
09-Jun-21	9:38	65.9	58.3		
09-Jun-21	9:43	66.8	58.9		
09-Jun-21	9:48	65.6	60.1		
15-Jun-21	15:21	64.2	60.8	62.5	65.5
15-Jun-21	15:26	65.9	58.0		
15-Jun-21	15:31	64.5	59.4		
15-Jun-21	15:36	66.7	59.8		
15-Jun-21	15:41	65.2	59.1		
15-Jun-21	15:46	66.2	58.0		
21-Jun-21	9:25	67.0	60.8	63.0	66.0
21-Jun-21	9:30	65.5	59.3		
21-Jun-21	9:35	67.1	59.4		
21-Jun-21	9:40	64.3	58.2		
21-Jun-21	9:45	66.7	59.1		
21-Jun-21	9:50	66.7	59.8		
26-Jun-21	15:20	65.8	59.7	62.5	65.5
26-Jun-21	15:25	64.5	60.9		
26-Jun-21	15:30	65.5	59.2		
26-Jun-21	15:35	66.4	59.3		
26-Jun-21	15:40	65.5	58.8		
26-Jun-21	15:45	65.5	60.2		

Remarks:

+3dB(A) correction was applied to free-field measurement.



The station set-up of a free-field measurement at station NM5A.

Graphical Presentation of Noise Monitoring Result at Station NM5A

