

M+ Museum

| ID | Activity | OD | Start | Finish | TF | 2019 | | | | | | | | | | | | 2020 | | | | | | | | | | | |
|---|---|-----|-----------|------------|-----|-------|-----|-----|-------|-----|-----|-------|-----|-----|-------|-----|-----|-------|-----|-----|-------|-----|-----|-------|-----|-----|-------|-----|-----|
| | | | | | | Qtr 4 | | | Qtr 1 | | | Qtr 2 | | | Qtr 3 | | | Qtr 4 | | | Qtr 1 | | | Qtr 2 | | | Qtr 3 | | |
| | | | | | | Oct | Nov | Dec | Jan | Feb | Mar | Apr | May | Jun | Jul | Aug | Sep | Oct | Nov | Dec | Jan | Feb | Mar | Apr | May | Jun | Jul | Aug | Sep |
| CMWP - M+ Project Remaining Works @ 10 Sep 2018 Target Program (Rev_0; 28Jan19) | | | | | | | | | | | | | | | | | | | | | | | | | | | | | |
| GENERAL & PRELIMINARIES (Remaining Works @ 10 SEP 2018) | | | | | | | | | | | | | | | | | | | | | | | | | | | | | |
| PROJECT KEY COMPLETION DATES | | | | | | | | | | | | | | | | | | | | | | | | | | | | | |
| Completion Obligations (*constrained dates for critical paths) | | | | | | | | | | | | | | | | | | | | | | | | | | | | | |
| OP1 | Podium, M+ Tower & CSF - Obtain OP for the Whole of M+ | 0 | | 31-Mar-20* | 0 | | | | | | | | | | | | | | | | | | | | | | | | |
| PC2 | CSF - Obtain PC for Hover to Employer (Incl. Zone B2_Z07 - Loading Bays) | 0 | | 31-Mar-20* | 1 | | | | | | | | | | | | | | | | | | | | | | | | |
| OP2 | RDE - Obtain OP for Hover to Employer | 0 | | 30-May-20* | 1 | | | | | | | | | | | | | | | | | | | | | | | | |
| PC1 | Podium, M+ Tower & RDE - Obtain PC for Hover to Employer | 0 | | 30-Jun-20* | 0 | | | | | | | | | | | | | | | | | | | | | | | | |
| BASEMENT & PODIUM | | | | | | | | | | | | | | | | | | | | | | | | | | | | | |
| Construction | | | | | | | | | | | | | | | | | | | | | | | | | | | | | |
| *Auditorium > GF | | | | | | | | | | | | | | | | | | | | | | | | | | | | | |
| Level 2 Summary | | | | | | | | | | | | | | | | | | | | | | | | | | | | | |
| 1202 | [LoE] POD_GF_AUD - Rem Structural Works | 140 | 29-Dec-18 | 21-Jun-19 | 180 | | | | | | | | | | | | | | | | | | | | | | | | |
| 9350 | [LoE] POD_GF_AUD - MEP 1st, 2nd & final fix | 165 | 23-Apr-19 | 07-Nov-19 | 5 | | | | | | | | | | | | | | | | | | | | | | | | |
| 9351 | [LoE] POD_GF_AUD - ABWF Works | 253 | 23-Apr-19 | 28-Feb-20 | 101 | | | | | | | | | | | | | | | | | | | | | | | | |
| Cinemas (B1-GF) | | | | | | | | | | | | | | | | | | | | | | | | | | | | | |
| Level 2 Summary | | | | | | | | | | | | | | | | | | | | | | | | | | | | | |
| 9352 | [LoE] POD_GF_Cinema - Structural Works | 120 | 11-Feb-19 | 04-Jul-19 | 2 | | | | | | | | | | | | | | | | | | | | | | | | |
| 9361 | [LoE] POD_GF_Cinema - MEP Works | 116 | 18-Jul-19 | 03-Dec-19 | 13 | | | | | | | | | | | | | | | | | | | | | | | | |
| 9371 | [LoE] POD_GF_Cinema - ABWF Works | 139 | 02-Jul-19 | 13-Dec-19 | 52 | | | | | | | | | | | | | | | | | | | | | | | | |
| Moving Image Centre Lobby/Bar & Museum Shop No.2 (B1-GF) - POD_B1_Z09b | | | | | | | | | | | | | | | | | | | | | | | | | | | | | |
| Level 2 Summary | | | | | | | | | | | | | | | | | | | | | | | | | | | | | |
| 9380 | [LoE] POD_B1_Z09b - Struct'l Works | 97 | 09-Apr-19 | 02-Aug-19 | 17 | | | | | | | | | | | | | | | | | | | | | | | | |
| 9381 | [LoE] POD_B1_Z09b - MEP Works | 83 | 26-Aug-19 | 03-Dec-19 | 1 | | | | | | | | | | | | | | | | | | | | | | | | |
| 9382 | [LoE] POD_B1_Z09b - ABWF Wrks (Drying w/ Wild Air not req'd) | 100 | 26-Jul-19 | 22-Nov-19 | 1 | | | | | | | | | | | | | | | | | | | | | | | | |
| 9489 | [LoE] POD_B1_Z09b - ABWF Wrks (Drying w/ Wild Air req'd) | 41 | 27-Nov-19 | 15-Jan-20 | 132 | | | | | | | | | | | | | | | | | | | | | | | | |
| Lecture Theatre & Adjacent Areas | | | | | | | | | | | | | | | | | | | | | | | | | | | | | |
| Level 2 Summary | | | | | | | | | | | | | | | | | | | | | | | | | | | | | |
| 1203 | [LoE] POD_GF_LTH - Struct'l Works | 203 | 15-Nov-18 | 23-Jul-19 | 10 | | | | | | | | | | | | | | | | | | | | | | | | |
| 8205 | [LoE] POD_GF_LTH - MEP Works | 95 | 03-Jul-19 | 24-Oct-19 | 35 | | | | | | | | | | | | | | | | | | | | | | | | |
| 8204 | [LoE] POD_GF_LTH - ABWF Wrks (Drying w/ Wild Air not req'd) | 166 | 03-Jun-19 | 18-Dec-19 | 148 | | | | | | | | | | | | | | | | | | | | | | | | |
| 9383 | [LoE] POD_GF_LTH - ABWF Wrks (Drying w/ Wild Air req'd) | 45 | 18-Nov-19 | 10-Jan-20 | 136 | | | | | | | | | | | | | | | | | | | | | | | | |
| Learning Centre & Adjacent Areas (GF & 1/F) | | | | | | | | | | | | | | | | | | | | | | | | | | | | | |
| Level 2 Summary | | | | | | | | | | | | | | | | | | | | | | | | | | | | | |
| 9398 | [LoE] POD_GF_LC & Adj Areas (GF & 1/F) - Struct'l Wrks | 160 | 24-Sep-18 | 11-Apr-19 | 71 | | | | | | | | | | | | | | | | | | | | | | | | |
| 9399 | [LoE] POD_GF_LC & Adj Areas (GF & 1/F) - MEP Wrks | 129 | 29-May-19 | 31-Oct-19 | 89 | | | | | | | | | | | | | | | | | | | | | | | | |
| 9426 | [LoE] POD_GF_LC & Adj Areas (GF & 1/F) - ABWF Wrks (Drying w/ Wild Air not req) | 140 | 18-May-19 | 02-Nov-19 | 193 | | | | | | | | | | | | | | | | | | | | | | | | |
| 9451 | [LoE] POD_GF_LC & Adj Areas (GF & 1/F) - L2SUM - ABWF Wrks (Drying w/ Wild A | 42 | 18-Nov-19 | 07-Jan-20 | 139 | | | | | | | | | | | | | | | | | | | | | | | | |
| Moving Image Centre (GF-1M) - POD_GF_Z01 | | | | | | | | | | | | | | | | | | | | | | | | | | | | | |
| Level 2 Summary | | | | | | | | | | | | | | | | | | | | | | | | | | | | | |
| 9452 | [LoE] POD_GF_Z01_MIC (GF-1M) - Struct'l Works | 111 | 28-Sep-18 | 15-Feb-19 | 51 | | | | | | | | | | | | | | | | | | | | | | | | |
| 9453 | [LoE] POD_GF_Z01_MIC (GF-1M) - MEP Works | 101 | 22-May-19 | 19-Sep-19 | 63 | | | | | | | | | | | | | | | | | | | | | | | | |
| 9454 | [LoE] POD_GF_Z01_MIC (GF-1M) - ABWF Works | 163 | 23-Apr-19 | 05-Nov-19 | 191 | | | | | | | | | | | | | | | | | | | | | | | | |
| Found & Industrial Spaces (B2-GF) - POD_B2_Z13 | | | | | | | | | | | | | | | | | | | | | | | | | | | | | |
| Level 2 Summary | | | | | | | | | | | | | | | | | | | | | | | | | | | | | |
| 9852 | [LoE] POD_GF_B2_Z13_Fnd & Ind'l Sps (B2-GF) - Struct Works - Floating Slab | 60 | 23-May-19 | 02-Aug-19 | 50 | | | | | | | | | | | | | | | | | | | | | | | | |
| 9455 | [LoE] POD_GF_B2_Z13_Fnd & Ind'l Sps (B2-GF) - MEP Wrks | 90 | 04-Jul-19 | 19-Oct-19 | 16 | | | | | | | | | | | | | | | | | | | | | | | | |
| 9456 | [LoE] POD_GF_B2_Z13_Fnd & Ind'l Sps (B2-GF) - ABWF Wrks (Drying w/ Wild Air | 164 | 09-May-19 | 21-Nov-19 | 99 | | | | | | | | | | | | | | | | | | | | | | | | |
| 9457 | [LoE] POD_GF_B2_Z13_Fnd & Ind'l Sps (B2-GF) - ABWF Wrks (Drying w/ Wild Air | 82 | 20-Nov-19 | 04-Mar-20 | 97 | | | | | | | | | | | | | | | | | | | | | | | | |
| Level B2 | | | | | | | | | | | | | | | | | | | | | | | | | | | | | |
| Level 2 Summary | | | | | | | | | | | | | | | | | | | | | | | | | | | | | |
| 9458 | [LoE] POD_B2 - Struct'l Works | 192 | 26-Nov-18 | 20-Jul-19 | 37 | | | | | | | | | | | | | | | | | | | | | | | | |
| 9459 | [LoE] POD_B2_Z01 to B2_Z04_Plant Rms - MEP Works | 282 | 12-Oct-18 | 21-Sep-19 | 61 | | | | | | | | | | | | | | | | | | | | | | | | |
| 9460 | [LoE] POD_B2_Z01 to B2_Z04_Plant Rms - ABWF Works | 279 | 03-Dec-18 | 09-Nov-19 | 187 | | | | | | | | | | | | | | | | | | | | | | | | |
| 9461 | [LoE] POD_B2_Z05 to B2_Z06_Toilets - MEP Works | 127 | 13-Apr-19 | 11-Sep-19 | 129 | | | | | | | | | | | | | | | | | | | | | | | | |
| 9462 | [LoE] POD_B2_Z05 to B2_Z06_Toilets - ABWF Wrks (Drying w/ Wild Air not req'd) | 142 | 28-Mar-19 | 13-Sep-19 | 227 | | | | | | | | | | | | | | | | | | | | | | | | |
| 9767 | [LoE] POD_B2_Z05 to B2_Z06_Toilets - ABWF Wrks (Drying w/ Wild Air req'd) | 18 | 18-Nov-19 | 07-Dec-19 | 163 | | | | | | | | | | | | | | | | | | | | | | | | |
| 9465 | [LoE] POD_B2_Z07 to B2_Z08_Plant Rms - MEP Works | 223 | 26-Feb-19 | 20-Nov-19 | 12 | | | | | | | | | | | | | | | | | | | | | | | | |
| 9466 | [LoE] POD_B2_Z07 to B2_Z08_Plant Rms - ABWF Works | 354 | 17-Dec-18 | 29-Feb-20 | 100 | | | | | | | | | | | | | | | | | | | | | | | | |
| Level B1 | | | | | | | | | | | | | | | | | | | | | | | | | | | | | |
| Level 2 Summary | | | | | | | | | | | | | | | | | | | | | | | | | | | | | |
| 9471 | [LoE] POD_B1 - Structural Works | 213 | 27-Oct-18 | 16-Jul-19 | 26 | | | | | | | | | | | | | | | | | | | | | | | | |
| 9472 | [LoE] POD_B1_Z02 to B1_Z05_BoH/Plant Rm/Kit - MEP Works | 247 | 22-Jan-19 | 20-Nov-19 | 160 | | | | | | | | | | | | | | | | | | | | | | | | |
| 9475 | [LoE] POD_B1_Z02 to B1_Z05_BoH/Plant Rm/Kit - ABWF Works | 274 | 09-Jan-19 | 09-Dec-19 | 162 | | | | | | | | | | | | | | | | | | | | | | | | |
| 9476 | [LoE] POD_B1_Z06_Toilets - MEP Works | 244 | 26-Feb-19 | 14-Dec-19 | 51 | | | | | | | | | | | | | | | | | | | | | | | | |
| 9477 | [LoE] POD_B1_Z06_Toilets - ABWF Works | 293 | 02-Jan-19 | 24-Dec-19 | 149 | | | | | | | | | | | | | | | | | | | | | | | | |
| 9479 | [LoE] POD_B1_Z07_BoH/Lobbies/Non-FR Corr - MEP Works | 156 | 26-Feb-19 | 30-Aug-19 | 79 | | | | | | | | | | | | | | | | | | | | | | | | |
| 9480 | [LoE] POD_B1_Z07_BoH/Lobbies/Non-FR Corr - ABWF Works | 211 | 11-Feb-19 | 22-Oct-19 | 203 | | | | | | | | | | | | | | | | | | | | | | | | |
| 9482 | [LoE] POD_B1_Z08/09a/10_FoH - MEP Works | 137 | 24-Jun-19 | 04-Dec-19 | 0 | | | | | | | | | | | | | | | | | | | | | | | | |
| 9483 | [LoE] POD_B1_Z08/09a/10_FoH - ABWF Works | 233 | 17-Jun-19 | 28-Mar-20 | 76 | | | | | | | | | | | | | | | | | | | | | | | | |
| 9484 | [LoE] POD_B1_Z11/12/14/16/17/18a_BoH/R Corr/Lobby/Carpark_Z - MEP Works | 215 | 26-Feb-19 | 11-Nov-19 | 20 | | | | | | | | | | | | | | | | | | | | | | | | |
| 9485 | [LoE] POD_B1_Z11/12/14/16/17/18a_BoH/R Corr/Lobby/Carpark_Z - ABWF Works | 246 | 04-Mar-19 | 23-Dec-19 | 150 | | | | | | | | | | | | | | | | | | | | | | | | |
| 9486 | [LoE] POD_B1_Z15_Carriageway & Ramp - Stage 1 - ABWF & MEP Works | 90 | 23-Apr-19 | 08-Aug-19 | 74 | | | | | | | | | | | | | | | | | | | | | | | | |
| 9487 | [LoE] POD_B1_Z15_Carriageway & Ramp - Stage 2 - ABWF & MEP Works | 78 | 27-Aug-19 | 28-Nov-19 | 97 | | | | | | | | | | | | | | | | | | | | | | | | |
| Level LGF | | | | | | | | | | | | | | | | | | | | | | | | | | | | | |
| Level 2 Summary | | | | | | | | | | | | | | | | | | | | | | | | | | | | | |
| 9488 | [LoE] POD_LG - Structural Works | 58 | 15-May-19 | 23-Jul-19 | 1 | | | | | | | | | | | | | | | | | | | | | | | | |
| 9490 | [LoE] POD_LG_Z01/02/03_BoH/FR Corr/Lob/Carpark - MEP Works | 144 | 26-Feb-19 | 16-Aug-19 | 91 | | | | | | | | | | | | | | | | | | | | | | | | |
| 9491 | [LoE] POD_LG_Z01/02/03_BoH/FR Corr/Lob/Carpark - ABWF Works | 227 | 28-Jan-19 | 02-Nov-19 | 193 | | | | | | | | | | | | | | | | | | | | | | | | |
| 9492 | [LoE] POD_LG_Z04/5/6/18d_Multi-Media/Cine Lob/Corr/BoH - MEP Works | 113 | 22-Jul-19 | 03-Dec-19 | 1 | | | | | | | | | | | | | | | | | | | | | | | | |
| 9493 | [LoE] POD_LG_Z04/5/6/18d_Multi-Media/Cine Lob/Corr/BoH - ABWF Works | 163 | 10-Jul-19 | 21-Jan-20 | 127 | | | | | | | | | | | | | | | | | | | | | | | | |
| Level GF | | | | | | | | | | | | | | | | | | | | | | | | | | | | | |
| Level 2 Summary | | | | | | | | | | | | | | | | | | | | | | | | | | | | | |
| 9494 | [LoE] POD_GF - Structural Works_Slab (excl. FG/5-7) | 60 | 24-Sep-18 | 05-Dec-18 | 0 | | | | | | | | | | | | | | | | | | | | | | | | |
| 9495 | [LoE] POD_GF - Structural Works_Slab - FG/5-7 | 42 | 26-Mar-19 | 15-May-19 | 3 | | | | | | | | | | | | | | | | | | | | | | | | |
| 9496 | [LoE] POD_GF - Structural Works - Walls | 138 | 06-Nov-18 | 25-Apr-19 | 35 | | | | | | | | | | | | | | | | | | | | | | | | |
| 9497 | [LoE] POD_GF - Structural Works - Staircases | 131 | 04-Dec-18 | 16-May-19 | 84 | | | | | | | | | | | | | | | | | | | | | | | | |
| 9520 | [LoE] POD_GF_Z02_Toilets/BoH/Corr/Lob - MEP Works | 207 | 15-Feb-19 | 22-Oct-19 | 97 | | | | | | | | | | | | | | | | | | | | | | | | |
| 9523 | [LoE] POD_GF_Z02_Toilets/BoH/Corr/Lob - ABWF Works | 237 | 28-Jan-19 | 14-Nov-19 | 183 | | | | | | | | | | | | | | | | | | | | | | | | |
| 9524 | [LoE] POD_GF_Z03_Museum Shop & BoH - MEP Works | 105 | 29-Apr-19 | 31-Aug-19 | 78 | | | | | | | | | | | | | | | | | | | | | | | | |
| 9525 | [LoE] POD_GF_Z03_Museum Shop & BoH - ABWF Works | 148 | 15-Apr-19 | 10-Oct-19 | 213 | | | | | | | | | | | | | | | | | | | | | | | | |
| 9526 | [LoE] POD_GF_Z07_FoH Main Lobby - MEP Works | 141 | 30-Mar-19 | 16-Sep-19 | 30 | | | | | | | | | | | | | | | | | | | | | | | | |
| 9527 | [LoE] POD_GF_Z07_FoH Main Lobby - ABWF Works | 231 | 09-Mar-19 | 11-Dec-19 | 160 | | | | | | | | | | | | | | | | | | | | | | | | |
| 9528 | [LoE] POD_GF_Z08 & GF_Z04_Ext Perimeter & Courtyard - MEP Works | 96 | 25-Jul-19 | 16-Nov-19 | 15 | | | | | | | | | | | | | | | | | | | | | | | | |
| 9529 | | | | | | | | | | | | | | | | | | | | | | | | | | | | | |

| ID | Activity | OD | Start | Finish | TF | 2019 | | | | | | | | | | | | 2020 | | | | | | | | | | | |
|-----------------------------------|--|-----|-----------|-----------|-----|---|-----|-----|-------|-----|-----|-------|-----|-----|-------|-----|-----|-------|-----|-----|-------|-----|-----|-------|-----|-----|-------|-----|-----|
| | | | | | | Qtr 4 | | | Qtr 1 | | | Qtr 2 | | | Qtr 3 | | | Qtr 4 | | | Qtr 1 | | | Qtr 2 | | | Qtr 3 | | |
| | | | | | | Oct | Nov | Dec | Jan | Feb | Mar | Apr | May | Jun | Jul | Aug | Sep | Oct | Nov | Dec | Jan | Feb | Mar | Apr | May | Jun | Jul | Aug | Sep |
| Level 2 | | | | | | | | | | | | | | | | | | | | | | | | | | | | | |
| Level 2 Summary | | | | | | | | | | | | | | | | | | | | | | | | | | | | | |
| 9543 | [LoE] POD_L2 - Structural Works | 120 | 27-Oct-18 | 25-Mar-19 | 27 | [Gantt bar: Yellow, Oct 27 - Mar 25] | | | | | | | | | | | | | | | | | | | | | | | |
| 9547 | [LoE] POD_L2_Z01_Temp Exh/Gal/BoH/Lob/Corr - MEP Works | 199 | 26-Feb-19 | 23-Oct-19 | 36 | [Gantt bar: Purple, Feb 26 - Oct 23] | | | | | | | | | | | | | | | | | | | | | | | |
| 9548 | [LoE] POD_L2_Z01_Temp Exh/Gal/BoH/Lob/Corr - ABWF Wrks (Drying w/ Wild Air | 201 | 13-Feb-19 | 12-Oct-19 | 205 | [Gantt bar: Blue, Feb 13 - Oct 12] | | | | | | | | | | | | | | | | | | | | | | | |
| 9549 | [LoE] POD_L2_Z01_Temp Exh/Gal/BoH/Lob/Corr - ABWF Wrks (Drying w/ Wild Air | 81 | 23-Dec-19 | 06-Apr-20 | 70 | [Gantt bar: Blue, Dec 23 - Apr 6] | | | | | | | | | | | | | | | | | | | | | | | |
| 9550 | [LoE] POD_L2_Z02_Gal/BoH/Lob/Corr - MEP Works | 209 | 21-Mar-19 | 27-Nov-19 | 6 | [Gantt bar: Red cross-hatch, Mar 21 - Nov 27] | | | | | | | | | | | | | | | | | | | | | | | |
| 9551 | [LoE] POD_L2_Z02_Gal/BoH/Lob/Corr - ABWF Wrks (Drying w/ Wild Air not req'd) | 211 | 14-Mar-19 | 22-Nov-19 | 176 | [Gantt bar: Blue, Mar 14 - Nov 22] | | | | | | | | | | | | | | | | | | | | | | | |
| 9552 | [LoE] POD_L2_Z02_Gal/BoH/Lob/Corr - ABWF Wrks (Drying w/ Wild Air req'd) | 130 | 18-Nov-19 | 28-Apr-20 | 51 | [Gantt bar: Blue, Nov 18 - Apr 28] | | | | | | | | | | | | | | | | | | | | | | | |
| 9553 | [LoE] POD_L2_Z03_Gal/BoH/Lob/Corr - MEP Works | 210 | 16-Mar-19 | 23-Nov-19 | 9 | [Gantt bar: Red cross-hatch, Mar 16 - Nov 23] | | | | | | | | | | | | | | | | | | | | | | | |
| 9554 | [LoE] POD_L2_Z03_Gal/BoH/Lob/Corr - ABWF Wrks (Drying w/ Wild Air not req'd) | 232 | 14-Mar-19 | 17-Dec-19 | 155 | [Gantt bar: Blue, Mar 14 - Dec 17] | | | | | | | | | | | | | | | | | | | | | | | |
| 9555 | [LoE] POD_L2_Z03_Gal/BoH/Lob/Corr - ABWF Wrks (Drying w/ Wild Air req'd) | 91 | 21-Jan-20 | 15-May-20 | 37 | [Gantt bar: Blue, Jan 21 - May 15] | | | | | | | | | | | | | | | | | | | | | | | |
| 9557 | [LoE] POD_L2_Z04_Gal/BoH/Lob/Corr - MEP Works | 207 | 23-Mar-19 | 27-Nov-19 | 66 | [Gantt bar: Purple, Mar 23 - Nov 27] | | | | | | | | | | | | | | | | | | | | | | | |
| 9558 | [LoE] POD_L2_Z04_Gal/BoH/Lob/Corr - ABWF Wrks (Drying w/ Wild Air not req'd) | 250 | 19-Mar-19 | 14-Jan-20 | 133 | [Gantt bar: Blue, Mar 19 - Jan 14] | | | | | | | | | | | | | | | | | | | | | | | |
| 9559 | [LoE] POD_L2_Z04_Gal/BoH/Lob/Corr - ABWF Wrks (Drying w/ Wild Air req'd) | 150 | 18-Nov-19 | 22-May-20 | 31 | [Gantt bar: Blue, Nov 18 - May 22] | | | | | | | | | | | | | | | | | | | | | | | |
| 9560 | [LoE] POD_L2_Z05_Plaza - MEP Works | 108 | 08-Jul-19 | 14-Nov-19 | 18 | [Gantt bar: Purple, Jul 8 - Nov 14] | | | | | | | | | | | | | | | | | | | | | | | |
| 9561 | [LoE] POD_L2_Z05_Plaza - ABWF Works | 186 | 11-Jun-19 | 20-Jan-20 | 128 | [Gantt bar: Blue, Jun 11 - Jan 20] | | | | | | | | | | | | | | | | | | | | | | | |
| Level L3 | | | | | | | | | | | | | | | | | | | | | | | | | | | | | |
| Level 2 Summary | | | | | | | | | | | | | | | | | | | | | | | | | | | | | |
| 9562 | [LoE] POD_L3 - Structural Works | 165 | 31-Oct-18 | 22-May-19 | 65 | [Gantt bar: Yellow, Oct 31 - May 22] | | | | | | | | | | | | | | | | | | | | | | | |
| 9563 | [LoE] POD_L3_Z01 & L3_Z02 - MEP Works | 159 | 19-Apr-19 | 29-Oct-19 | 32 | [Gantt bar: Purple, Apr 19 - Oct 29] | | | | | | | | | | | | | | | | | | | | | | | |
| 9564 | [LoE] POD_L3_Z01 & L3_Z02 - ABWF Works | 201 | 25-Mar-19 | 22-Nov-19 | 177 | [Gantt bar: Blue, Mar 25 - Nov 22] | | | | | | | | | | | | | | | | | | | | | | | |
| 9751 | [LoE] POD_L3_Hard & Soft Landscaping incl MEP Works | 264 | 27-Mar-19 | 17-Feb-20 | 112 | [Gantt bar: Purple, Mar 27 - Feb 17] | | | | | | | | | | | | | | | | | | | | | | | |
| EWS (External Wall System) | | | | | | | | | | | | | | | | | | | | | | | | | | | | | |
| Level 2 Summary | | | | | | | | | | | | | | | | | | | | | | | | | | | | | |
| 1210 | [LoE] POD_EWS_1MF - Podium Level 1MF Install Facade | 224 | 24-Oct-18 | 25-Jul-19 | 51 | [Gantt bar: Orange, Oct 24 - Jul 25] | | | | | | | | | | | | | | | | | | | | | | | |
| 8049 | [LoE] POD_EWS_L2 - Podium Level 2 Install Facade | 139 | 18-Dec-18 | 10-Jun-19 | 13 | [Gantt bar: Red cross-hatch, Dec 18 - Jun 10] | | | | | | | | | | | | | | | | | | | | | | | |
| 9565 | [LoE] POD_EWS_B1F - Pisa South Peri_Install GW | 110 | 04-May-19 | 11-Sep-19 | 1 | [Gantt bar: Orange, May 4 - Sep 11] | | | | | | | | | | | | | | | | | | | | | | | |
| 9566 | [LoE] POD_EWS_GF - Pisa Ceramic Tube Wall/GW w/ Ceramic Mullion Install | 60 | 08-Jun-19 | 17-Aug-19 | 18 | [Gantt bar: Orange, Jun 8 - Aug 17] | | | | | | | | | | | | | | | | | | | | | | | |
| 9567 | [LoE] POD_EWS_2F_BF/11-13 - Pisa_East/West_Install GW | 72 | 03-Jul-19 | 25-Sep-19 | 118 | [Gantt bar: Orange, Jul 3 - Sep 25] | | | | | | | | | | | | | | | | | | | | | | | |
| 9568 | [LoE] POD_EWS_3F_Skylight/Shop Front Glazing/Garden Roof & Wall Install | 154 | 01-Mar-19 | 02-Sep-19 | 16 | [Gantt bar: Orange, Mar 1 - Sep 2] | | | | | | | | | | | | | | | | | | | | | | | |
| 9569 | [LoE] POD_EWS_GF - Corrugated Alum Perforated Panels | 216 | 10-Apr-19 | 24-Dec-19 | 43 | [Gantt bar: Orange, Apr 10 - Dec 24] | | | | | | | | | | | | | | | | | | | | | | | |
| Vertical Transportation | | | | | | | | | | | | | | | | | | | | | | | | | | | | | |
| Level 2 Summary | | | | | | | | | | | | | | | | | | | | | | | | | | | | | |
| 9752 | [LoE] POD_Verti_Transport_Lift - Fireman's Lift | 144 | 08-Dec-18 | 05-Jun-19 | 95 | [Gantt bar: Green, Dec 8 - Jun 5] | | | | | | | | | | | | | | | | | | | | | | | |
| 9753 | [LoE] POD_Verti_Transport_Lift - Other Lift | 168 | 19-Jan-19 | 14-Aug-19 | 37 | [Gantt bar: Green, Jan 19 - Aug 14] | | | | | | | | | | | | | | | | | | | | | | | |
| 9754 | [LoE] POD_Verti_Transport_Esc - Escalators | 175 | 04-May-19 | 29-Nov-19 | 64 | [Gantt bar: Green, May 4 - Nov 29] | | | | | | | | | | | | | | | | | | | | | | | |
| Risers | | | | | | | | | | | | | | | | | | | | | | | | | | | | | |
| Level 2 Summary | | | | | | | | | | | | | | | | | | | | | | | | | | | | | |
| 9570 | [LoE] POD_Risers (Stg 1_Duct 1/2/3/5) | 136 | 05-Nov-18 | 22-Apr-19 | 108 | [Gantt bar: Purple, Nov 5 - Apr 22] | | | | | | | | | | | | | | | | | | | | | | | |
| 9787 | [LoE] POD_Risers (Stg 2_Duct 4) | 42 | 26-Jul-19 | 12-Sep-19 | 2 | [Gantt bar: Red cross-hatch, Jul 26 - Sep 12] | | | | | | | | | | | | | | | | | | | | | | | |
| Staircases | | | | | | | | | | | | | | | | | | | | | | | | | | | | | |
| Level 2 Summary | | | | | | | | | | | | | | | | | | | | | | | | | | | | | |
| 9761 | [LoE] POD_Staircases - Not Required for Pressurisation | 174 | 01-Apr-19 | 28-Oct-19 | 198 | [Gantt bar: Green, Apr 1 - Oct 28] | | | | | | | | | | | | | | | | | | | | | | | |
| 9762 | [LoE] POD_Staircases - Required for Pressurisation | 169 | 01-Apr-19 | 22-Oct-19 | 203 | [Gantt bar: Green, Apr 1 - Oct 22] | | | | | | | | | | | | | | | | | | | | | | | |
| M+ TOWER | | | | | | | | | | | | | | | | | | | | | | | | | | | | | |
| Construction | | | | | | | | | | | | | | | | | | | | | | | | | | | | | |
| Level 4 | | | | | | | | | | | | | | | | | | | | | | | | | | | | | |
| Level 2 Summary | | | | | | | | | | | | | | | | | | | | | | | | | | | | | |
| 9851 | [LoE] TW_L4 - Rem Structural Works (ST-02/02A) | 18 | 01-Nov-18 | 21-Nov-18 | 201 | [Gantt bar: Yellow, Nov 1 - Nov 21] | | | | | | | | | | | | | | | | | | | | | | | |
| 6562 | [LoE] TW_L4 - MEP Works (excl other prelim works) | 98 | 01-Jun-19 | 26-Sep-19 | 21 | [Gantt bar: Purple, Jun 1 - Sep 26] | | | | | | | | | | | | | | | | | | | | | | | |
| 6561 | [LoE] TW_L4 - ABWF Works (excl wet trades or other prelim works) | 158 | 23-Apr-19 | 30-Oct-19 | 90 | [Gantt bar: Blue, Apr 23 - Oct 30] | | | | | | | | | | | | | | | | | | | | | | | |
| Level 5 | | | | | | | | | | | | | | | | | | | | | | | | | | | | | |
| Level 2 Summary | | | | | | | | | | | | | | | | | | | | | | | | | | | | | |
| 6546 | [LoE] TW_L5 - MEP Works (excl other prelim works) | 135 | 30-Apr-19 | 10-Oct-19 | 99 | [Gantt bar: Purple, Apr 30 - Oct 10] | | | | | | | | | | | | | | | | | | | | | | | |
| 6545 | [LoE] TW_L5 - ABWF Works (excl wet trades or other prelim works) | 159 | 23-Apr-19 | 31-Oct-19 | 89 | [Gantt bar: Blue, Apr 23 - Oct 31] | | | | | | | | | | | | | | | | | | | | | | | |
| Level 6 | | | | | | | | | | | | | | | | | | | | | | | | | | | | | |
| Level 2 Summary | | | | | | | | | | | | | | | | | | | | | | | | | | | | | |
| 6559 | [LoE] TW_L6 - MEP Works (excl other prelim works) | 213 | 26-Feb-19 | 08-Nov-19 | 74 | [Gantt bar: Purple, Feb 26 - Nov 8] | | | | | | | | | | | | | | | | | | | | | | | |
| 6558 | [LoE] TW_L6 - ABWF Works (excl wet trades or other prelim works) | 191 | 02-Apr-19 | 18-Nov-19 | 74 | [Gantt bar: Blue, Apr 2 - Nov 18] | | | | | | | | | | | | | | | | | | | | | | | |
| Level 7 | | | | | | | | | | | | | | | | | | | | | | | | | | | | | |
| Level 2 Summary | | | | | | | | | | | | | | | | | | | | | | | | | | | | | |
| 6557 | [LoE] TW_L7 - MEP Works (excl other prelim works) | 217 | 26-Feb-19 | 13-Nov-19 | 70 | [Gantt bar: Purple, Feb 26 - Nov 13] | | | | | | | | | | | | | | | | | | | | | | | |
| 6556 | [LoE] TW_L7 - ABWF Works (excl wet trades or other prelim works) | 178 | 23-Apr-19 | 22-Nov-19 | 70 | [Gantt bar: Blue, Apr 23 - Nov 22] | | | | | | | | | | | | | | | | | | | | | | | |
| Level 8 | | | | | | | | | | | | | | | | | | | | | | | | | | | | | |
| Level 2 Summary | | | | | | | | | | | | | | | | | | | | | | | | | | | | | |
| 6555 | [LoE] TW_L8 - MEP Works (excl other prelim works) | 222 | 26-Feb-19 | 19-Nov-19 | 67 | [Gantt bar: Purple, Feb 26 - Nov 19] | | | | | | | | | | | | | | | | | | | | | | | |
| 6554 | [LoE] TW_L8 - ABWF Works (excl wet trades or other prelim works) | 200 | 02-Apr-19 | 28-Nov-19 | 65 | [Gantt bar: Blue, Apr 2 - Nov 28] | | | | | | | | | | | | | | | | | | | | | | | |
| Level 9 | | | | | | | | | | | | | | | | | | | | | | | | | | | | | |
| Level 2 Summary | | | | | | | | | | | | | | | | | | | | | | | | | | | | | |
| 6553 | [LoE] TW_L9 - MEP Works (excl other prelim works) | 230 | 26-Feb-19 | 28-Nov-19 | 57 | [Gantt bar: Purple, Feb 26 - Nov 28] | | | | | | | | | | | | | | | | | | | | | | | |
| 6552 | [LoE] TW_L9 - ABWF Works (excl wet trades or other prelim works) | 202 | 10-Apr-19 | 07-Dec-19 | 57 | [Gantt bar: Blue, Apr 10 - Dec 7] | | | | | | | | | | | | | | | | | | | | | | | |
| Level 10 | | | | | | | | | | | | | | | | | | | | | | | | | | | | | |
| Level 2 Summary | | | | | | | | | | | | | | | | | | | | | | | | | | | | | |
| 6551 | [LoE] TW_L10 - MEP Works (excl other prelim works) | 230 | 26-Feb-19 | 28-Nov-19 | 57 | [Gantt bar: Purple, Feb 26 - Nov 28] | | | | | | | | | | | | | | | | | | | | | | | |
| 6550 | [LoE] TW_L10 - ABWF Works (excl wet trades or other prelim works) | 251 | 11-Feb-19 | 07-Dec-19 | 57 | [Gantt bar: Blue, Feb 11 - Dec 7] | | | | | | | | | | | | | | | | | | | | | | | |
| Level 11 | | | | | | | | | | | | | | | | | | | | | | | | | | | | | |
| Level 2 Summary | | | | | | | | | | | | | | | | | | | | | | | | | | | | | |
| 6548 | [LoE] TW_L11 - MEP Works (excl other prelim works) | 231 | 22-Feb-19 | 26-Nov-19 | 58 | [Gantt bar: Purple, Feb 22 - Nov 26] | | | | | | | | | | | | | | | | | | | | | | | |
| 6547 | [LoE] TW_L11 - ABWF Works (excl wet trades or other prelim works) | 250 | 11-Feb-19 | 06-Dec-19 | 58 | [Gantt bar: Blue, Feb 11 - Dec 6] | | | | | | | | | | | | | | | | | | | | | | | |
| Level 12 | | | | | | | | | | | | | | | | | | | | | | | | | | | | | |
| Level 2 Summary | | | | | | | | | | | | | | | | | | | | | | | | | | | | | |
| 6563 | [LoE] TW_L12 - Structural Works (ST-02/02a) | 18 | 15-Oct-18 | 05-Nov-18 | 161 | [Gantt bar: Yellow, Oct 15 - Nov 5] | | | | | | | | | | | | | | | | | | | | | | | |
| 6565 | [LoE] TW_L12 - MEP Works (excl other prelim works) | 237 | 22-Feb-19 | 03-Dec-19 | 53 | [Gantt bar: Purple, Feb 22 - Dec 3] | | | | | | | | | | | | | | | | | | | | | | | |
| 6564 | [LoE] TW_L12 - ABWF Works (excl wet trades or other prelim works) | 255 | 11-Feb-19 | 12-Dec-19 | 53 | [Gantt bar: Blue, Feb 11 - Dec 12] | | | | | | | | | | | | | | | | | | | | | | | |
| Level 13 | | | | | | | | | | | | | | | | | | | | | | | | | | | | | |
| Level 2 Summary | | | | | | | | | | | | | | | | | | | | | | | | | | | | | |
| 6566 | [LoE] TW_L13 - Structural Works (ST-02/02a) | 18 | 06-Nov-18 | 26-Nov-18 | 161 | [Gantt bar: Yellow, Nov 6 - Nov 26] | | | | | | | | | | | | | | | | | | | | | | | |
| 6568 | [LoE] TW_L13 - MEP Works (excl other prelim works) | 242 | 26-Feb-19 | 12-Dec-19 | 50 | [Gantt bar: Purple, Feb 26 - Dec 12] | | | | | | | | | | | | | | | | | | | | | | | |
| 6567 | [LoE] TW_L13 - ABWF Works (excl wet trades or other prelim works) | 235 | 15-Mar-19 | 21-Dec-19 | 45 | [Gantt bar: Blue, Mar 15 - Dec 21] | | | | | | | | | | | | | | | | | | | | | | | |
| Level 14 | | | | | | | | | | | | | | | | | | | | | | | | | | | | | |
| Level 2 Summary | | | | | | | | | | | | | | | | | | | | | | | | | | | | | |
| 6569 | [LoE] TW_L14 - Structural Works (ST-03, 02, 02a) | 22 | 22-Nov-18 | 17-Dec-18 | 161 | [Gantt bar: Yellow, Nov 22 - Dec 17] | | | | | | | | | | | | | | | | | | | | | | | |
| 6572 | [LoE] TW_L14 - MEP Works | 242 | 26-Feb-19 | 12-Dec-19 | 50 | [Gantt bar: Purple, Feb 26 - Dec 12] | | | | | | | | | | | | | | | | | | | | | | | |
| 6570 | [LoE] TW_L14 - ABWF Works (excl wet trades or other prelim works) | 235 | 15-Mar-19 | 21-Dec-19 | 45 | [Gantt bar: Blue, Mar 15 - Dec 21] | | | | | | | | | | | | | | | | | | | | | | | |
| Level 15 | | | | | | | | | | | | | | | | | | | | | | | | | | | | | |
| Level 2 Summary | | | | | | | | | | | | | | | | | | | | | | | | | | | | | |
| 6573 | [LoE] TW_L15 - Structural Works (ST-02/02a/03 & East Core Rem Structure) | 61 | 29-Oct-18 | 09-Jan-19 | 161 | [Gantt bar: Yellow, Oct 29 - Jan 9] | | | | | | | | | | | | | | | | | | | | | | | |
| 6575 | [LoE] TW_L15 - MEP Works | 225 | 26-Feb-19 | 23-Nov-19 | 67 | [Gantt bar: Purple, Feb 26 - Nov 23] | | | | | | | | | | | | | | | | | | | | | | | |
| 6574 | [LoE] TW_L15 - ABWF Works (excl wet trades or other prelim works) | 218 | 15-Mar-19 | 03-Dec-19 | 62 | [Gantt bar: Blue, Mar 15 - Dec 3] | | | | | | | | | | | | | | | | | | | | | | | |
| Level 16 | | | | | | | | | | | | | | | | | | | | | | | | | | | | | |
| Level 2 Summary | | | | | | | | | | | | | | | | | | | | | | | | | | | | | |
| 6576 | [LoE] TW_L16 - Structural Works (Rem Superstructure & Stair Cases) | 65 | 29-Oct-18 | 14-Jan-19 | 101 | [Gantt bar: Yellow, Oct 29 - Jan 14] | | | | | | | | | | | | | | | | | | | | | | | |
| 6578 | [LoE] TW_L16 - MEP Works | 213 | 26-Feb-19 | 09-Nov-19 | 79 | [Gantt bar: Purple, Feb 26 - Nov 9] | | | | | | | | | | | | | | | | | | | | | | | |
| 6577 | [LoE] TW_L16 - ABWF Works (excl wet trades or other prelim works) | 169 | 29-Apr-19 | 19-Nov-19 | 74 | [Gantt bar: Blue, Apr 29 - Nov 19] | | | | | | | | | | | | | | | | | | | | | | | |
| Level RF | | | | | | | | | | | | | | | | | | | | | | | | | | | | | |
| Level 2 Summary | | | | | | | | | | | | | | | | | | | | | | | | | | | | | |
| 6579 | [LoE] TW_RF - Structural Works (Rem Super-structure Works) | 65 | 29-Oct-18 | 14-Jan-19 | 101 | [Gantt bar: Yellow, Oct 29 - Jan 14] | | | | | | | | | | | | | | | | | | | | | | | |
| 6581 | [LoE] TW_RF - MEP Works | 183 | 29-Jan-19 | 11-Sep-19 | 118 | [Gantt bar: Purple, Jan 29 - Sep 11] | | | | | | | | | | | | | | | | | | | | | | | |
| 6580 | [LoE] TW_RF - ABWF Works | 192 | 19-Feb-19 | 09-Oct-19 | 109 | [Gantt bar: Blue, Feb 19 - Oct 9] | | | | | | | | | | | | | | | | | | | | | | | |
| Level URF | | | | | | | | | | | | | | | | | | | | | | | | | | | | | |

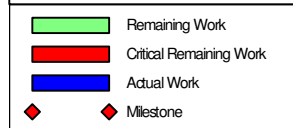
| ID | Activity | OD | Start | Finish | TF | 2019 | | | | | | | | | | | | 2020 | | | | | | | | | | | |
|------------------------------------|--|-----|-----------|-----------|-----|----------------------------------|-----|-----|-------|-----|-----|-------|-----|-----|-------|-----|-----|-------|-----|-----|-------|-----|-----|-------|-----|-----|-------|-----|-----|
| | | | | | | Qtr 4 | | | Qtr 1 | | | Qtr 2 | | | Qtr 3 | | | Qtr 4 | | | Qtr 1 | | | Qtr 2 | | | Qtr 3 | | |
| | | | | | | Oct | Nov | Dec | Jan | Feb | Mar | Apr | May | Jun | Jul | Aug | Sep | Oct | Nov | Dec | Jan | Feb | Mar | Apr | May | Jun | Jul | Aug | Sep |
| Level 2 Summary | | | | | | | | | | | | | | | | | | | | | | | | | | | | | |
| 6583 | [LoE] TW_URF - Structural Works | 75 | 31-Oct-18 | 29-Jan-19 | 34 | [Gantt Bar: Oct-Dec 2019] | | | | | | | | | | | | | | | | | | | | | | | |
| 9857 | [LoE] TW_URF - MEP Works | 48 | 27-Jul-19 | 23-Sep-19 | 43 | [Gantt Bar: Jul-Sep 2019] | | | | | | | | | | | | | | | | | | | | | | | |
| EWS (External Wall System) | | | | | | | | | | | | | | | | | | | | | | | | | | | | | |
| Level 2 Summary | | | | | | | | | | | | | | | | | | | | | | | | | | | | | |
| 4246 | [LoE] TW_EWS - Facade Erection (Super Structure Weather Tight Phase) | 187 | 12-Oct-18 | 31-May-19 | 29 | [Gantt Bar: Oct 2018 - May 2019] | | | | | | | | | | | | | | | | | | | | | | | |
| 9858 | [LoE] TW_EWS - Facade Erection (Wet Zone) | 75 | 31-May-19 | 29-Aug-19 | 141 | [Gantt Bar: May-Aug 2019] | | | | | | | | | | | | | | | | | | | | | | | |
| Vertical Transportation | | | | | | | | | | | | | | | | | | | | | | | | | | | | | |
| Level 2 Summary | | | | | | | | | | | | | | | | | | | | | | | | | | | | | |
| 4247 | [LoE] TW_Lift - Lifts Install (Shaft & Lift Works Summarised) | 208 | 15-Jan-19 | 26-Sep-19 | 117 | [Gantt Bar: Jan-Sep 2019] | | | | | | | | | | | | | | | | | | | | | | | |
| Risers | | | | | | | | | | | | | | | | | | | | | | | | | | | | | |
| Level 2 Summary | | | | | | | | | | | | | | | | | | | | | | | | | | | | | |
| 1234 | [LoE] TW_Riser - Risers | 120 | 15-Dec-18 | 16-May-19 | 95 | [Gantt Bar: Dec 2018 - May 2019] | | | | | | | | | | | | | | | | | | | | | | | |
| Staircases | | | | | | | | | | | | | | | | | | | | | | | | | | | | | |
| Level 2 Summary | | | | | | | | | | | | | | | | | | | | | | | | | | | | | |
| 4248 | [LoE] TW_ST - ST02a and ST02 ABWF & MEP Works | 93 | 24-Jan-19 | 21-May-19 | 224 | [Gantt Bar: Jan-May 2019] | | | | | | | | | | | | | | | | | | | | | | | |
| 9859 | [LoE] TW_ST - ST02a and ST02 Finishing Works | 22 | 11-Jul-19 | 05-Aug-19 | 161 | [Gantt Bar: Jul-Aug 2019] | | | | | | | | | | | | | | | | | | | | | | | |
| 9860 | [LoE] TW_ST - ST01 and ST03 ABWF & MEP Works | 74 | 18-Jul-19 | 16-Oct-19 | 103 | [Gantt Bar: Jul-Oct 2019] | | | | | | | | | | | | | | | | | | | | | | | |
| CSF BUILDING | | | | | | | | | | | | | | | | | | | | | | | | | | | | | |
| Construction | | | | | | | | | | | | | | | | | | | | | | | | | | | | | |
| Level GF | | | | | | | | | | | | | | | | | | | | | | | | | | | | | |
| Level 2 Summary | | | | | | | | | | | | | | | | | | | | | | | | | | | | | |
| 9861 | [LoE] CSF_GF - Rem Parapet Wal, Struct Remedial Works | 36 | 21-Jan-19 | 09-Mar-19 | 79 | [Gantt Bar: Jan-Mar 2019] | | | | | | | | | | | | | | | | | | | | | | | |
| 5790 | [LoE] CSF_GF - MEP Works | 102 | 13-May-19 | 10-Sep-19 | 144 | [Gantt Bar: May-Sep 2019] | | | | | | | | | | | | | | | | | | | | | | | |
| 5789 | [LoE] CSF_GF - ABWF Works (excl wet trades / other prelim works) | 145 | 18-Mar-19 | 06-Sep-19 | 165 | [Gantt Bar: Mar-Sep 2019] | | | | | | | | | | | | | | | | | | | | | | | |
| 9862 | [LoE] CSF_GF - ABWF Works (Drying w/ Wild Air req'd) | 23 | 22-Jan-20 | 25-Feb-20 | 30 | [Gantt Bar: Jan-Feb 2020] | | | | | | | | | | | | | | | | | | | | | | | |
| Level 1 | | | | | | | | | | | | | | | | | | | | | | | | | | | | | |
| Level 2 Summary | | | | | | | | | | | | | | | | | | | | | | | | | | | | | |
| 5501 | [LoE] CSF_L1 - MEP Works (early works) | 56 | 20-Oct-18 | 24-Dec-18 | 233 | [Gantt Bar: Oct-Dec 2018] | | | | | | | | | | | | | | | | | | | | | | | |
| 9864 | [LoE] CSF_L1 - MEP Works | 174 | 17-Jan-19 | 19-Aug-19 | 71 | [Gantt Bar: Jan-Aug 2019] | | | | | | | | | | | | | | | | | | | | | | | |
| 5500 | [LoE] CSF_L1 - ABWF Works (excl wet trades / other prelim works) | 144 | 07-Mar-19 | 26-Aug-19 | 175 | [Gantt Bar: Mar-Aug 2019] | | | | | | | | | | | | | | | | | | | | | | | |
| Level 2 | | | | | | | | | | | | | | | | | | | | | | | | | | | | | |
| Level 2 Summary | | | | | | | | | | | | | | | | | | | | | | | | | | | | | |
| 5731 | [LoE] CSF_L2 - MEP Works (early works) | 56 | 20-Oct-18 | 24-Dec-18 | 232 | [Gantt Bar: Oct-Dec 2018] | | | | | | | | | | | | | | | | | | | | | | | |
| 9865 | [LoE] CSF_L2 - MEP Works | 150 | 26-Feb-19 | 23-Aug-19 | 79 | [Gantt Bar: Feb-Aug 2019] | | | | | | | | | | | | | | | | | | | | | | | |
| 5730 | [LoE] CSF_L2 - ABWF Works (excl wet trades / other prelim works) | 168 | 12-Feb-19 | 30-Aug-19 | 171 | [Gantt Bar: Feb-Aug 2019] | | | | | | | | | | | | | | | | | | | | | | | |
| Level 3 | | | | | | | | | | | | | | | | | | | | | | | | | | | | | |
| Level 2 Summary | | | | | | | | | | | | | | | | | | | | | | | | | | | | | |
| 5677 | [LoE] CSF_L3 - MEP Works (early works) | 56 | 20-Oct-18 | 24-Dec-18 | 233 | [Gantt Bar: Oct-Dec 2018] | | | | | | | | | | | | | | | | | | | | | | | |
| 9867 | [LoE] CSF_L3 - MEP Works | 174 | 17-Jan-19 | 19-Aug-19 | 101 | [Gantt Bar: Jan-Aug 2019] | | | | | | | | | | | | | | | | | | | | | | | |
| 5676 | [LoE] CSF_L3 - ABWF Works (excl wet trades / other prelim works) | 140 | 12-Mar-19 | 26-Aug-19 | 175 | [Gantt Bar: Mar-Aug 2019] | | | | | | | | | | | | | | | | | | | | | | | |
| Level 4 | | | | | | | | | | | | | | | | | | | | | | | | | | | | | |
| Level 2 Summary | | | | | | | | | | | | | | | | | | | | | | | | | | | | | |
| 5621 | [LoE] CSF_L4 - MEP Works | 106 | 26-Apr-19 | 30-Aug-19 | 61 | [Gantt Bar: Apr-Aug 2019] | | | | | | | | | | | | | | | | | | | | | | | |
| 5620 | [LoE] CSF_L4 - ABWF Works (excl wet trades / other prelim works) | 127 | 09-Apr-19 | 06-Sep-19 | 165 | [Gantt Bar: Apr-Sep 2019] | | | | | | | | | | | | | | | | | | | | | | | |
| Level 5 | | | | | | | | | | | | | | | | | | | | | | | | | | | | | |
| Level 2 Summary | | | | | | | | | | | | | | | | | | | | | | | | | | | | | |
| 5502 | [LoE] CSF_L5 - Structural Works (ST-52) | 18 | 29-Oct-18 | 17-Nov-18 | 154 | [Gantt Bar: Oct-Nov 2018] | | | | | | | | | | | | | | | | | | | | | | | |
| 5566 | [LoE] CSF_L5 - MEP Works | 106 | 26-Apr-19 | 30-Aug-19 | 73 | [Gantt Bar: Apr-Aug 2019] | | | | | | | | | | | | | | | | | | | | | | | |
| 5565 | [LoE] CSF_L5 - ABWF Works (excl wet trades / other prelim works) | 115 | 23-Apr-19 | 06-Sep-19 | 165 | [Gantt Bar: Apr-Sep 2019] | | | | | | | | | | | | | | | | | | | | | | | |
| Level 6 | | | | | | | | | | | | | | | | | | | | | | | | | | | | | |
| Level 2 Summary | | | | | | | | | | | | | | | | | | | | | | | | | | | | | |
| 5791 | [LoE] CSF_L6 - Structural Works | 29 | 06-Nov-18 | 08-Dec-18 | 154 | [Gantt Bar: Nov-Dec 2018] | | | | | | | | | | | | | | | | | | | | | | | |
| 5849 | [LoE] CSF_L6 - MEP Works | 119 | 26-Apr-19 | 16-Sep-19 | 48 | [Gantt Bar: Apr-Sep 2019] | | | | | | | | | | | | | | | | | | | | | | | |
| 5848 | [LoE] CSF_L6 - ABWF Works (excl wet trades / other prelim works) | 137 | 23-Apr-19 | 04-Oct-19 | 143 | [Gantt Bar: Apr-Oct 2019] | | | | | | | | | | | | | | | | | | | | | | | |
| Level 7 | | | | | | | | | | | | | | | | | | | | | | | | | | | | | |
| Level 2 Summary | | | | | | | | | | | | | | | | | | | | | | | | | | | | | |
| 5850 | [LoE] CSF_L7 - Structural Works (Perim. Wall to 8/F) | 38 | 12-Oct-18 | 26-Nov-18 | 170 | [Gantt Bar: Oct-Nov 2018] | | | | | | | | | | | | | | | | | | | | | | | |
| 9868 | [LoE] CSF_L7 - Structural Works (ST-52) | 18 | 22-Feb-19 | 14-Mar-19 | 98 | [Gantt Bar: Feb-Mar 2019] | | | | | | | | | | | | | | | | | | | | | | | |
| 6105 | [LoE] CSF_L7 - MEP Works | 173 | 26-Apr-19 | 20-Nov-19 | 9 | [Gantt Bar: Apr-Nov 2019] | | | | | | | | | | | | | | | | | | | | | | | |
| 6104 | [LoE] CSF_L7 - ABWF Works (excl wet trades / other prelim works) | 188 | 23-Apr-19 | 04-Dec-19 | 92 | [Gantt Bar: Apr-Dec 2019] | | | | | | | | | | | | | | | | | | | | | | | |
| Level 8 & Roof Level | | | | | | | | | | | | | | | | | | | | | | | | | | | | | |
| Level 2 Summary | | | | | | | | | | | | | | | | | | | | | | | | | | | | | |
| 6255 | [LoE] CSF_L8 - Structural Works | 124 | 12-Oct-18 | 15-Mar-19 | 31 | [Gantt Bar: Oct-Mar 2019] | | | | | | | | | | | | | | | | | | | | | | | |
| 6257 | [LoE] CSF_L8 - MEP Works | 237 | 31-Jan-19 | 18-Nov-19 | 8 | [Gantt Bar: Jan-Nov 2019] | | | | | | | | | | | | | | | | | | | | | | | |
| 6256 | [LoE] CSF_L8 - ABWF Works | 241 | 16-Feb-19 | 02-Dec-19 | 94 | [Gantt Bar: Feb-Dec 2019] | | | | | | | | | | | | | | | | | | | | | | | |
| EWS (External Wall System) | | | | | | | | | | | | | | | | | | | | | | | | | | | | | |
| Level 2 Summary | | | | | | | | | | | | | | | | | | | | | | | | | | | | | |
| 3844 | [LoE] CSF_L8_& Roof - EWS (External Wall System) | 177 | 20-Dec-18 | 27-Jul-19 | 42 | [Gantt Bar: Dec 2018 - Jul 2019] | | | | | | | | | | | | | | | | | | | | | | | |
| 6331 | [LoE] CSF_L8_& Roof - Roof Waterproofing & Panels | 153 | 15-Apr-19 | 16-Oct-19 | 30 | [Gantt Bar: Apr-Oct 2019] | | | | | | | | | | | | | | | | | | | | | | | |
| Vertical Transportation | | | | | | | | | | | | | | | | | | | | | | | | | | | | | |
| Level 2 Summary | | | | | | | | | | | | | | | | | | | | | | | | | | | | | |
| 3845 | [LoE] CSF_LT-51/LT-53 | 213 | 16-Mar-19 | 27-Nov-19 | 54 | [Gantt Bar: Mar-Nov 2019] | | | | | | | | | | | | | | | | | | | | | | | |
| 6163 | [LoE] CSF_LT-52 | 118 | 10-Jul-19 | 27-Nov-19 | 54 | [Gantt Bar: Jul-Nov 2019] | | | | | | | | | | | | | | | | | | | | | | | |
| Risers | | | | | | | | | | | | | | | | | | | | | | | | | | | | | |
| Level 2 Summary | | | | | | | | | | | | | | | | | | | | | | | | | | | | | |
| 3846 | [LoE] CSF_RISERS - Risers MEP Works | 142 | 12-Nov-18 | 07-May-19 | 125 | [Gantt Bar: Nov 2018 - May 2019] | | | | | | | | | | | | | | | | | | | | | | | |
| Staircases | | | | | | | | | | | | | | | | | | | | | | | | | | | | | |
| Level 2 Summary | | | | | | | | | | | | | | | | | | | | | | | | | | | | | |
| 6187 | [LoE] CSF_ST - Stair Cases (ST51 & ST52) | 80 | 18-Mar-19 | 21-Jun-19 | 230 | [Gantt Bar: Mar-Jun 2019] | | | | | | | | | | | | | | | | | | | | | | | |
| Testing & Commissioning | | | | | | | | | | | | | | | | | | | | | | | | | | | | | |
| Level 2 Summary | | | | | | | | | | | | | | | | | | | | | | | | | | | | | |
| 3896 | [LoE] Level 2 Summary - Wild Air Stage 1 T&C (1/F to 5/F) | 96 | 15-Apr-19 | 07-Aug-19 | 130 | [Gantt Bar: Apr-Aug 2019] | | | | | | | | | | | | | | | | | | | | | | | |
| 6332 | [LoE] Level 2 Summary - Wild Air Stage 2 T&C (GF, 6/F to 8/F) | 46 | 09-Oct-19 | 30-Nov-19 | 34 | [Gantt Bar: Oct-Nov 2019] | | | | | | | | | | | | | | | | | | | | | | | |
| 9743 | [LoE] Level 2 Summary - CSF MC T&C for FSD All Levels (major items) | 36 | 05-Nov-19 | 16-Dec-19 | 50 | [Gantt Bar: Nov-Dec 2019] | | | | | | | | | | | | | | | | | | | | | | | |
| RDE BUILDING | | | | | | | | | | | | | | | | | | | | | | | | | | | | | |
| Construction | | | | | | | | | | | | | | | | | | | | | | | | | | | | | |
| Level GF | | | | | | | | | | | | | | | | | | | | | | | | | | | | | |
| Level 2 Summary | | | | | | | | | | | | | | | | | | | | | | | | | | | | | |
| 6588 | [LoE] RDE_GF - MEP Works | 251 | 16-Jan-19 | 19-Nov-19 | 29 | [Gantt Bar: Jan-Nov 2019] | | | | | | | | | | | | | | | | | | | | | | | |
| 6587 | [LoE] RDE_GF - ABWF Works | 276 | 29-Dec-18 | 02-Dec-19 | 168 | [Gantt Bar: Dec 2018 - Dec 2019] | | | | | | | | | | | | | | | | | | | | | | | |
| Level 1 | | | | | | | | | | | | | | | | | | | | | | | | | | | | | |
| Level 2 Summary | | | | | | | | | | | | | | | | | | | | | | | | | | | | | |
| 6589 | [LoE] RDE_L1 - Structural Works (late cast area) | 5 | 02-Mar-19 | 07-Mar-19 | 112 | [Gantt Bar: Mar 2019] | | | | | | | | | | | | | | | | | | | | | | | |
| 6591 | [LoE] RDE_L1 - MEP Works | 321 | 29-Nov-18 | 26-Dec-19 | 16 | [Gantt Bar: Nov 2018 - Dec 2019] | | | | | | | | | | | | | | | | | | | | | | | |
| 6590 | [LoE] RDE_L1 - ABWF Works | 347 | 10-Nov-18 | 08-Jan-20 | 138 | [Gantt Bar: Nov 2018 - Jan 2020] | | | | | | | | | | | | | | | | | | | | | | | |
| Level 2 | | | | | | | | | | | | | | | | | | | | | | | | | | | | | |
| Level 2 Summary | | | | | | | | | | | | | | | | | | | | | | | | | | | | | |
| 6592 | [LoE] RDE_L2 - Structural Works (late cast area) | 5 | 25-Feb-19 | 01-Mar-19 | 13 | [Gantt Bar: Feb-Mar 2019] | | | | | | | | | | | | | | | | | | | | | | | |
| 6595 | [LoE] RDE_L2 - MEP Works | 259 | 01-Dec-18 | 16-Oct-19 | 58 | [Gantt Bar: Dec 2018 - Oct 2019] | | | | | | | | | | | | | | | | | | | | | | | |
| 6594 | [LoE] RDE_L2 - ABWF Works | 287 | 10-Nov-18 | 29-Oct-19 | 198 | [Gantt Bar: Nov 2018 - Oct 2019] | | | | | | | | | | | | | | | | | | | | | | | |
| Level 3 | | | | | | | | | | | | | | | | | | | | | | | | | | | | | |
| Level 2 Summary | | | | | | | | | | | | | | | | | | | | | | | | | | | | | |
| 6596 | [LoE] RDE_L13 - Structural Works (late cast strip) | 5 | 19-Feb-19 | 23-Feb-19 | 13 | [Gantt Bar: Feb 2019] | | | | | | | | | | | | | | | | | | | | | | | |
| 6598 | [LoE] RDE_L13 - MEP Works | 259 | 01-Dec-18 | 16-Oct-19 | 58 | [Gantt Bar: Dec 2018 - Oct 2019] | | | | | | | | | | | | | | | | | | | | | | | |
| 6597 | [LoE] RDE_L13 - ABWF Works | 287 | 10-Nov-18 | 29-Oct-19 | 198 | [Gantt Bar: Nov 2018 - Oct 2019] | | | | | | | | | | | | | | | | | | | | | | | |
| Level 4 | | | | | | | | | | | | | | | | | | | | | | | | | | | | | |
| Level 2 Summary | | | | | | | | | | | | | | | | | | | | | | | | | | | | | |

Lyric Theatre Complex

| Activity ID | Activity Name | Start Date | Finish Date | 2019 | | | |
|---|---|------------|-------------|--------|--------|--------|--------|
| | | | | Sep 21 | Oct 22 | Nov 23 | Dec 24 |
| L1 Contract for Lyric Theatre Complex (3MRP) - Environmental | | | | | | | |
| Cost Centre B - Excavation and Lateral Support (ELS) Stage 2 | | | | | | | |
| Excavation and ELS Works (Stage 2) | | | | | | | |
| BB200940 | Implement Remedial Measures (67 nos. of Clutch Pipe Piles) | 21-Sep-19A | 23-Nov-19 | | | | |
| CB160800 | [South - Area 1 & 2] Excavate to -9.0, -11.3, -14.2mPD w/ Soil Berm (29,690 cu.m) | 26-Apr-19A | 08-Oct-19 | | | | |
| CB160900 | [South - Area 1 & 2] Pile Head Treatment at Central Portion (54 nr BP) | 08-May-19A | 11-Oct-19 | | | | |
| CB161020 | [South - Area 1 & 2] Install 5th Layer of Strut S5 | 09-Jul-19A | 30-Oct-19 | | | | |
| CB161030 | [South - Area 1 & 2] Excavate South / West Soil Berm to -12.4mPD (18,145 cu.m) | 25-Nov-19 | 21-Dec-19 | | | | |
| CB161040 | [South - Area 1 & 2] Pile Head Treatment at South / West (22 nr BP) | 09-Dec-19 | 08-Jan-20 | | | | |
| CB161060 | [South - Area 1 & 2] Excavate East Soil Berm to -12.0mPD (9,750 cu.m) | 25-Nov-19 | 14-Dec-19 | | | | |
| CB161070 | [South - Area 1 & 2] Install 6th Layer of Strut S6 | 05-Dec-19 | 27-Dec-19 | | | | |
| CB161100 | [South - Area 1 & 2] Excavate East Berm to Formation Level -14.2mPD (4,750 cu.m) | 19-Dec-19 | 11-Jan-20 | | | | |
| CB161210 | [South/North] BA14 Completion of ELS - BD Submission & Acknowledgement | 11-Jan-20 | 17-Jan-20 | | | | |
| CB162000 | [North - Area 3 & 4] Excavate to Formation Level -9.6 mPD (46,575 cu.m) | 18-Apr-19A | 04-Oct-19 | | | | |
| CB162100 | [North - Area 3 & 4] Pile Head Treatment (52 nr BP) | 23-May-19A | 12-Oct-19 | | | | |
| Cost Centre C - Basement | | | | | | | |
| Cost Centre C1 - Essential Basement Structure (Excl. AET Protection & Box Culvert) | | | | | | | |
| CC100100 | [South - L01] Blinding Layer for Pile Cap / B2 Slab at Central Portion | 30-Apr-19A | 14-Oct-19 | | | | |
| CC100200 | [South - L01] Construct Central Pile Cap / B2 Slab at -11.3mPD & -14.2mPD | 09-May-19A | 24-Oct-19 | | | | |
| CC100210 | [South - L01] Blinding Layer for Pile Cap / B2 Slab at South / West | 23-Dec-19 | 15-Jan-20 | | | | |
| CC100220 | [South - L01] Construct South / West Pile Cap / B2 Slab at -12.4mPD | 27-Dec-19 | 08-Feb-20 | | | | |
| CC100420 | [South - L01] Construct Central B2-B1 Columns & Structural Walls | 25-Nov-19 | 15-Jan-20 | | | | |
| CC100440 | [South - L01] Construct Central B1 Beam & Slab | 16-Dec-19 | 08-Feb-20 | | | | |
| CC101400 | [North - L04] Blinding Layer for Pile Cap / B2 Slab | 12-Jun-19A | 19-Oct-19 | | | | |
| CC101500 | [North - L04] Construct Pile Cap / B2 Slab at -9.6mPD | 22-Jun-19A | 16-Nov-19 | | | | |
| CC101600 | [North - L04] Remove Strut Layer S4 | 24-Oct-19 | 27-Nov-19 | | | | |
| CC101700 | [North - L04] Construct B2-B1 Columns & Structural Walls | 18-Nov-19 | 15-Jan-20 | | | | |
| CC102420 | [Area 6 - L06] Construct B1-B1M Columns & Structural Walls | 10-Dec-18A | 05-Oct-19 | | | | |
| CC102430 | [Area 6 - L06] Construct B1M Beam & Slab | 14-Jan-19A | 12-Oct-19 | | | | |
| CC102510 | [Area 6 - L06] Construct B1M-GF Columns & Structural Walls | 13-May-19A | 01-Nov-19 | | | | |

| | | | |
|---|--|---|--|
| Remaining Work Critical Remaining Work Actual Work Milestone | Project ID: L13MRP-2019030-En Layout: L1-3MRP (Env) Page: 1 of 2 | <p align="center"> West Kowloon Cultural District Authority L1 Contract for Lyric Theatre Complex & Extended Basement Three Month Rolling Programme (3MRP) - Status as of 30 Sep 2019 </p> | |
|---|--|---|--|

| Activity ID | Activity Name | Start Date | Finish Date | 2019 | | | |
|---|--|------------|-------------|--------|--------|--------|--------|
| | | | | Sep 21 | Oct 22 | Nov 23 | Dec 24 |
| CAI No. 012 Advance Works for Artist Square Bridge | | | | | | | |
| P34 Stair & Lift Tower | | | | | | | |
| CAI12320 | ELS Works & Excavate to Formation Level | 21-Aug-19A | 14-Sep-19A | █ | | | |
| CAI12330 | Trim Pile Heads, Blinding Layer & Construct Pile Cap | 31-Aug-19A | 08-Oct-19 | █ | | | |
| Cost Centre D - Public Infrastructure Works (PIW) | | | | | | | |
| Cost Centre D2 - Austin Road West Lay-by | | | | | | | |
| Cost Centre D2.1 Roadworks and Remaining | | | | | | | |
| MC30-Ch.170 to MC30-Ch.150 | | | | | | | |
| CD210730 | MC30-Ch170-150: Roadworks & Footpath | 30-Jan-19A | 16-Oct-19 | █ | █ | | |
| CD210750 | MC30-Ch170-150: Install Street Furniture & Lighting | 17-Oct-19 | 06-Nov-19 | | █ | | |
| MC30-Ch.150 to MC30-Ch.100 | | | | | | | |
| CD210630 | MC30-Ch150-100: Roadworks & Footpath | 13-Feb-19A | 14-Oct-19 | █ | █ | | |
| CD210650 | MC30-Ch150-100: Install Street Furniture & Lighting | 07-Nov-19 | 27-Nov-19 | | | █ | |
| MC30-Ch.100 to MC30-Ch.50 | | | | | | | |
| CD210530 | MC30-Ch100-50: Roadworks & Footpath | 11-Jul-19A | 25-Oct-19 | █ | █ | | |
| CD210535 | MC30-Ch100-50: Maintenance Staircase | 04-Oct-19 | 25-Oct-19 | | █ | | |
| CD210550 | MC30-Ch100-50: Install Street Furniture & Lighting | 28-Nov-19 | 18-Dec-19 | | | | █ |
| MC30-Ch.50 to MC30-Ch.00 | | | | | | | |
| CD210420 | MC30-Ch50-00: DN450 Freshwater (0+64 - 0+14) | 14-Mar-19A | 09-Oct-19 | █ | █ | | |
| CD210425 | MC30-Ch50-00: DN450 Salt Water (0+062 - 0+12) | 14-Mar-19A | 09-Oct-19 | █ | █ | | |
| MC20-Ch.140 to MC20-Ch.100 | | | | | | | |
| CD210310 | MC20-Ch140-100: Road Drainage (WL1.12 to WL1.9) | 06-Jun-19A | 31-Oct-19 | █ | █ | | |
| CD210320 | MC20-Ch140-100: DN450 Freshwater (0+14 - 0+00) | 01-Nov-19 | 14-Nov-19 | | | █ | |
| CD210325 | MC20-Ch140-100: DN450 Salt Water (0+12 - 0+00) | 01-Nov-19 | 14-Nov-19 | | | █ | |
| Cost Centre D2.2 Drainage | | | | | | | |
| MC20-Ch.140 to MC20-Ch.00 | | | | | | | |
| CD220190 | MC20-Ch140-00: 1800mm dia Drainage (SF1.1 to SF1.1B) - 30m | 02-Jul-19A | 31-Oct-19 | █ | █ | | |



Project ID: L13MRP-2019030-En
 Layout: L1-3MRP (Env)
 Page: 2 of 2

West Kowloon Cultural District Authority
L1 Contract for Lyric Theatre Complex & Extended Basement
Three Month Rolling Programme (3MRP) - Status as of 30 Sep 2019

