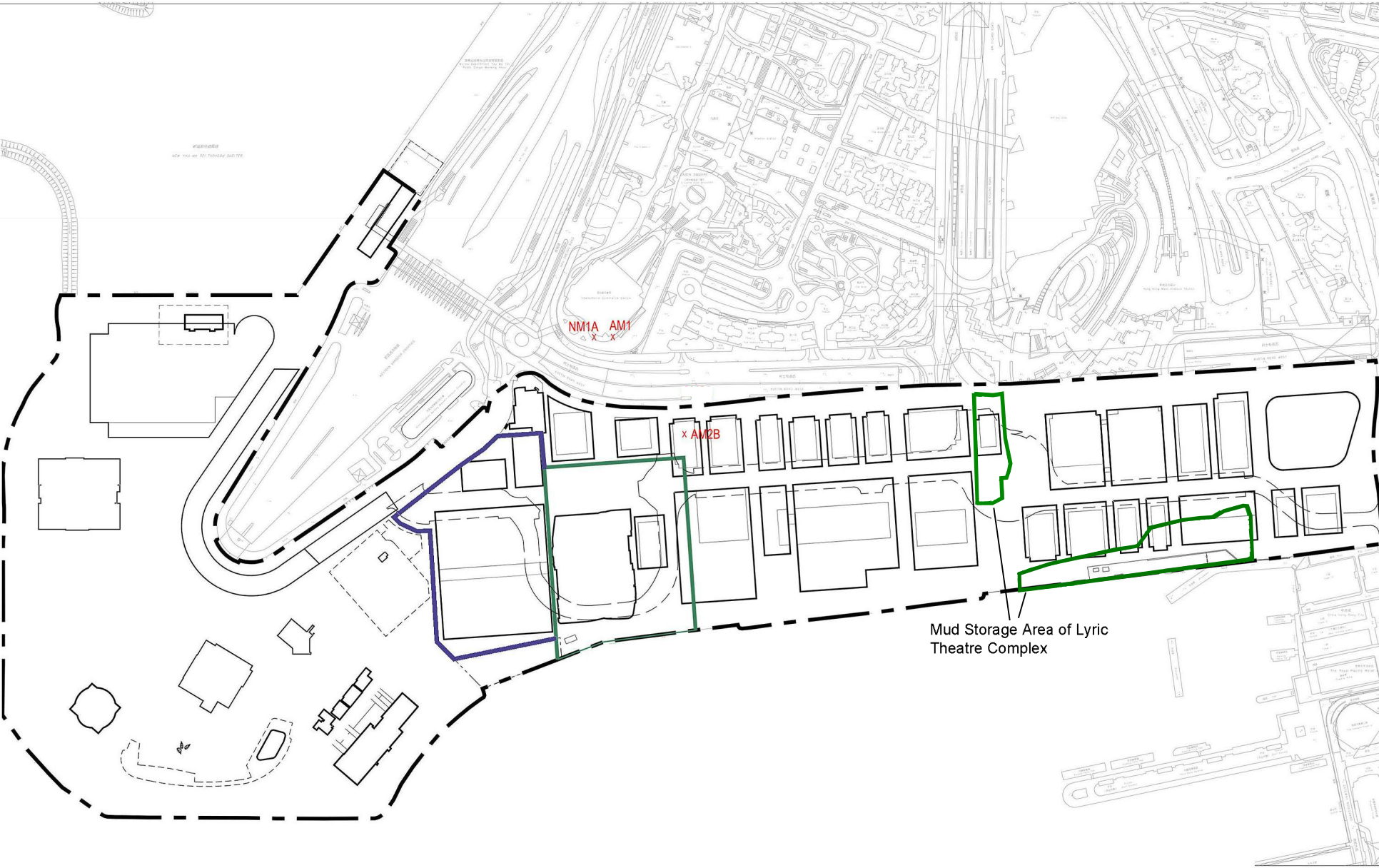


- NOTES:**
- WKCD BOUNDARY
 - M+ MUSEUM BOUNDARY
 - LYRIC THEATRE BOUNDARY
 - - - - BOUNDARY OF UNDERPASS ROAD SERVING THE PLANNED WKCD
 - X CONSTRUCTION AIR/NOISE MONITORING STATION

REMARKS:
 THE AIR MONITORING STATION AM2A HAS BEEN RELOCATED TO THE ALTERNATIVE MONITORING STATION AM2B AT 1ST FLOOR OF GAMMON'S SITE OFFICE ON 26 FEBRUARY 2019.



Mud Storage Area of Lyric Theatre Complex

REV.	DATE	DESCRIPTION	INITIAL

JOB TITLE: DEVELOPMENT AT WEST KOWLOON CULTURAL DISTRICT

DRAWING TITLE: SITE LAYOUT PLAN AND MONITORING STATIONS

SCALE: 1:100 PRINTED: A1

CHECKED: DATE

APPROVED: DATE

DRAWN: TY DATE: 16-10-2015

CONTRACT NO.

DRAWING NO. **FIGURE 1** REV. XA

CAD REF NAME: XXXXX-AUT-PLNS-DWG-P00-L00-0000-XXX.dwg

AUTHORITY