

M+ Museum

Three Months Rolling Programme (3MRP) - Mth 22 - 31 July 2017

Activity ID	Activity Name	CMWP Dur.	CMWP - R.O.D5 Start	CMWP - R.O.D5 Finish	Actual / Forecast Start	Actual / Forecast Finish	Planned B/L % Complete	Actual % Complete	Finish Variance (+/-d)	Comments / Mitigating Measures	July				August				September				October				November								
											22	23	24	25	30	31	01	02	03	04	05	06	10	11	12	13	17	18	19	20	24	25	26	27	28
Three Months Rolling Programme 3MRP - Mth22 (31 July 2017)																																			
M+																																			
Contract Dates																																			
CD01	Contract Period (1218 days)	800	17-Dec-16	24-Feb-19	17-Dec-16 A	02-Apr-19	28%	25.43%	-37																										
Contract Key Dates																																			
CKD01	Sewage Pumping Station (SPS) - Practical Completion for	0		25-Jun-17		29-Sep-17*	100%	0%	-96																										
CKD07	Interfacing Car Park (ICP) - Complete of Structure	0		25-Jun-17		02-Aug-17*	100%	0%	-38																										
Forecast Completion Dates																																			
KD01	Sewage Pumping Station (SPS) - Practical Completion for	0		15-Sep-17		29-Sep-17*	0%	0%	-14																										
KD07	Interfacing Car Park (ICP) - Complete of Structure	0		25-Jun-17		02-Aug-17*	100%	0%	-38																										
Critical Key Dates																																			
Critical Key Dates - M+ Tower Structure RC Works																																			
Critical Key Dates - M+ Tower Structure Works - Tower																																			
A13070	Complete Tower Structure - 5/F Slab, Wall & Column (G	0		23-Sep-17		07-Oct-17	0%	0%	-10																										
A13080	Complete Tower Structure - 6/F Slab, Wall & Column (G	0		09-Oct-17		20-Oct-17	0%	0%	-10																										
A13090	Complete Tower Structure - 7/F Slab, Wall & Column (G	0		20-Oct-17		02-Nov-17	0%	0%	-10																										
Critical Key Dates - M+ Tower Structure Works - East Core																																			
A12920	Complete East Core Wall - 5/F Slab, Wall & Column (GL	0		28-Aug-17		04-Sep-17	0%	0%	-6																										
A12930	Complete East Core Wall - 6/F Slab, Wall & Column (GL	0		11-Sep-17		18-Sep-17	0%	0%	-6																										
A12940	Complete East Core Wall - 7/F Slab, Wall & Column (GL	0		22-Sep-17		29-Sep-17	0%	0%	-6																										
A12950	Complete East Core Wall - 8/F Slab, Wall & Column (GL	0		06-Oct-17		13-Oct-17	0%	0%	-6																										
A12970	Complete East Core Wall - 9/F Slab, Wall & Column (GL	0		18-Oct-17		25-Oct-17	0%	0%	-6																										
Critical Key Dates - M+ Tower Structure Works - West Core																																			
A12770	Complete West Core Wall - 5/F Slab, Wall & Column (GL	0		21-Jul-17		30-Aug-17	100%	0%	-34																										
A12780	Complete West Core Wall - 6/F Slab, Wall & Column (GL	0		07-Aug-17		15-Sep-17	0%	0%	-34																										
A12790	Complete West Core Wall - 7/F Slab, Wall & Column (GL	0		21-Aug-17		29-Sep-17	0%	0%	-34																										
A12800	Complete West Core Wall - 8/F Slab, Wall & Column (GL	0		04-Sep-17		16-Oct-17	0%	0%	-34																										
A12810	Complete West Core Wall - 9/F Slab, Wall & Column (GL	0		18-Sep-17		31-Oct-17	0%	0%	-34																										
A12820	Complete West Core Wall - 10/F Slab, Wall & Column (C	0		03-Oct-17		20-Nov-17	0%	0%	-39																										
A12830	Complete West Core Wall - 11/F Slab, Wall & Column (C	0		18-Oct-17		02-Dec-17	0%	0%	-38																										
Critical Key Dates - Mega Truss Works																																			
Critical Key Dates - Mega Truss Erection & Construction																																			
A13200	Complete Truss 3 - Construction	0		03-Aug-17		26-Aug-17	0%	0%	-20																										
A15520	Complete Truss 4 - Construction	0		14-Aug-17		05-Sep-17	0%	0%	-19																										
A40525	Complete Truss 1 - Construction	0		04-Aug-17		16-Aug-17	0%	0%	-10																										
A46720	Complete Truss 2 Construction	0		01-Aug-17		16-Aug-17	0%	0%	-13																										
A50580	Complete Truss 5 - Steel Erection	0		18-Jul-17		10-Jun-17 A	100%	100%	32																										
A50600	Complete Truss 5 - Construction	0		28-Aug-17		21-Aug-17	0%	0%	7																										
Critical Key Dates - Removal of Falsework																																			
A18360	Complete Removal of T5 falseworks	0		04-Oct-17		15-Nov-17	0%	0%	-34																										
A18370	Complete Removal of T1 & T2 falseworks @GLL-H	0		20-Oct-17		02-Nov-17	0%	0%	-10																										
A18380	Complete Removal of T1 & T2 falseworks @GLH-E	0		20-Oct-17		02-Nov-17	0%	0%	-10																										
A18440	Complete Removal of T3 falseworks	0		01-Nov-17		03-Oct-17	0%	0%	24																										
Critical Key Dates - Podium Structure RC Works																																			
A11110	Complete Zone A - G/F Slab, Wall & Columns	0		31-May-17		03-Aug-17	100%	0%	-54																										
A11120	Complete Zone A - 1M/F Slab, Wall & Columns	0		27-Jun-17		18-Aug-17	100%	0%	-44																										
A11125	Complete Zone A - 2/F Slab, Wall & Columns	0		22-Jul-17		11-Sep-17	100%	0%	-43																										
A11800	Complete Zone A - 3/F Slab, Wall & Columns	0		21-Aug-17		12-Oct-17	0%	0%	-43																										
A11810	Complete Zone H - B1/F Slab	0		06-Jun-17		14-Aug-17	100%	0%	-58																										
A11820	Complete Zone H - LG/F Slab, Wall & Columns	0		17-Jun-17		25-Aug-17	100%	0%	-58																										
A11830	Complete Zone H - G/F Slab, Wall & Columns	0		02-Aug-17		03-Oct-17	0%	0%	-52																										
A11840	Complete Zone H - 1/F Slab, Wall & Columns	0		21-Aug-17		23-Oct-17	0%	0%	-52																										
A11850	Complete Zone H - 1M/F Slab, Wall & Columns	0		07-Sep-17		10-Nov-17	0%	0%	-52																										
A11860	Complete Zone H - 2/F Slab, Wall & Columns	0		25-Sep-17		27-Nov-17	0%	0%	-51																										

■ Remaining Level of Effort ◆ Actual Milestone
■ Actual Level of Effort ◆ Project Baseline
◆ Milestone ◆ Project LoE Baseline
◆ Critical Milestone ◆ Baseline Milestone
■ Actual Work
■ Remaining Work
■ Critical Remaining Work

West Kowloon Cultural District Authority
M+ Contractor's Main Works Programme CMWP -
(Rev. 0 - Draft 5)



Date	Revision	Checked	Approved
31-Mar-17	3MRP_M18_31 Mar 17	Chris S.	Chis Chau / Ricky Lau
30-Apr-17	3MRP_M19_30 April 17	Chris S.	Chis Chau / Ricky Lau
31-May-17	3MRP_M20_31 May 17	Chris S.	Chis Chau / Ricky Lau
30-Jun-17	3MRP_M21_30 Jun 17	Chris S.	Chis Chau / Ricky Lau
31-Jul-17	3MRP_M22_31 July 17	Chris S.	Chis Chau / Ricky Lau

Three Months Rolling Programme (3MRP) - Mth 22 - 31 July 2017

Activity ID	Activity Name	CMWP Dur.	CMWP - R0.D5 Start	CMWP - R0.D5 Finish	Actual / Forecast Start	Actual / Forecast Finish	Planned B/L % Complete	Actual % Complete	Finish Variance (+/-d)	Comments / Mitigating Measures	July		August			September			October			November						
											22	23	23	24	24	25	26	26	27	28	29	30	01	02	03	04	05	06
											02	09	16	23	30	06	13	20	27	03	10	17	24	01	08	15	22	29
A18300	Remove PERI Tower Jack head	2	22-Sep-17	23-Sep-17	06-Oct-17	07-Oct-17	0%	0%	-10																			
A18310	Remove PERI Tower (12 nos.)	4	25-Sep-17	28-Sep-17	09-Oct-17	12-Oct-17	0%	0%	-10																			
A57710	Lower down 18M truss (6 nos.)	1	29-Sep-17	29-Sep-17	13-Oct-17	13-Oct-17	0%	0%	-10																			
A57720	Disconnect strand jack system at T1 & T2	1	29-Sep-17	29-Sep-17	13-Oct-17	13-Oct-17	0%	0%	-10																			
A57730	Remove T1 & T2 working platform	3	30-Sep-17	04-Oct-17	14-Oct-17	17-Oct-17	0%	0%	-10																			
A57740	Remove 18M truss (6 nos.)	4	06-Oct-17	10-Oct-17	18-Oct-17	21-Oct-17	0%	0%	-10																			
A57750	Remove 9M truss (12 nos.)	4	11-Oct-17	14-Oct-17	23-Oct-17	26-Oct-17	0%	0%	-10																			
A57760	Remove Non-Typical truss	4	16-Oct-17	19-Oct-17	27-Oct-17	01-Nov-17	0%	0%	-10																			
A57770	Remove Spreader Beam	3	18-Oct-17	20-Oct-17	31-Oct-17	02-Nov-17	0%	0%	-10																			
Removal of T3 Falseworks																												
Pre-setup Works																												
A18410	Install additional beam for strengthening T3 9M trusses	6	30-Aug-17	05-Sep-17	11-Sep-17	16-Sep-17	0%	0%	-10																			
A18420	Remove Strand Jack on Strand Jack Support at T1 & T2	5	23-Sep-17	28-Sep-17	18-Sep-17	22-Sep-17	0%	0%	5																			
A18430	Set up Strand Jack Support System at T3	4	29-Sep-17	04-Oct-17	23-Sep-17	27-Sep-17	0%	0%	5																			
Removal Works for T3 Falseworks																												
A57990	Install Strand Jack on Strand Jack Support at T3	5	06-Oct-17	11-Oct-17	06-Sep-17	12-Sep-17	0%	0%	24																			
A58000	Lift up 100mm	1	12-Oct-17	12-Oct-17	12-Sep-17	13-Sep-17	0%	0%	24																			
A58010	Remove PERI Tower Jack head	2	13-Oct-17	14-Oct-17	13-Sep-17	15-Sep-17	0%	0%	24																			
A58020	Remove PERI Tower (12 nos.)	3	16-Oct-17	18-Oct-17	15-Sep-17	19-Sep-17	0%	0%	24																			
A58030	Lower down 9M truss (6 nos.)	1	19-Oct-17	19-Oct-17	19-Sep-17	20-Sep-17	0%	0%	24																			
A58040	Disconnect strand jack system at T3	1	20-Oct-17	20-Oct-17	20-Sep-17	21-Sep-17	0%	0%	24																			
A58050	Remove T3 working platform	3	21-Oct-17	24-Oct-17	21-Sep-17	25-Sep-17	0%	0%	24																			
A58070	Remove 9M truss (12 nos.)	4	25-Oct-17	30-Oct-17	25-Sep-17	29-Sep-17	0%	0%	24																			
A58080	Remove Non-Typical truss	4	25-Oct-17	30-Oct-17	25-Sep-17	29-Sep-17	0%	0%	24																			
A58090	Remove Spreader Beam	2	31-Oct-17	01-Nov-17	29-Sep-17	03-Oct-17	0%	0%	24																			
Removal of T4 Falseworks																												
Pre-setup Works																												
A18470	Install additional beam for strengthening T4 9M trusses	6	06-Oct-17	12-Oct-17	28-Sep-17	06-Oct-17	0%	0%	5																			
A18480	Remove Strand Jack on Strand Jack Support at T3	5	21-Oct-17	26-Oct-17	07-Oct-17	12-Oct-17	0%	0%	12																			
A18490	Set up Strand Jack Support System at T4	4	27-Oct-17	01-Nov-17	13-Oct-17	17-Oct-17	0%	0%	12																			
Removal Works for T4 Falseworks																												
A58100	Installation of Strand Jack on Strand Jack Support at T4	5	02-Nov-17	07-Nov-17	18-Oct-17	23-Oct-17	0%	0%	12																			
A58110	Lift up 100mm	1	08-Nov-17	08-Nov-17	24-Oct-17	24-Oct-17	0%	0%	12																			
A58120	Remove PERI Tower Jack head	2	09-Nov-17	10-Nov-17	25-Oct-17	26-Oct-17	0%	0%	12																			
A58130	Remove PERI Tower (12 nos.)	3	11-Nov-17	14-Nov-17	27-Oct-17	31-Oct-17	0%	0%	12																			
RC Works for T1 & T2 In-fill Slabs																												
RC Works for 4/F In-fill Slab																												
Area Between Modular Towers																												
A18000	Scaffolding for 4/F Slab RC Works @GL L-H	4	12-Aug-17	16-Aug-17	24-Aug-17	28-Aug-17	0%	0%	-10																			
A18005	Rebar fixing of 4/F Slab @GL L-H	3	18-Aug-17	21-Aug-17	30-Aug-17	01-Sep-17	0%	0%	-10																			
A18015	Formworks of 4/F Slab @GL L-H	1	17-Aug-17	17-Aug-17	29-Aug-17	29-Aug-17	0%	0%	-10																			
A18030	Concreting 4/F Slab @GL L-H	1	22-Aug-17	22-Aug-17	02-Sep-17	02-Sep-17	0%	0%	-10																			
A18035	Concrete Curing 4/F Slab @GL L-H	3	23-Aug-17	25-Aug-17	03-Sep-17	05-Sep-17	0%	0%	-11																			
A18040	Scaffolding for 4/F Slab RC Works @GL H-E	4	16-Aug-17	19-Aug-17	28-Aug-17	31-Aug-17	0%	0%	-10																			
A18050	Rebar fixing of 4/F Slab @GL H-E	3	22-Aug-17	24-Aug-17	02-Sep-17	05-Sep-17	0%	0%	-10																			
A18160	Formworks of 4/F Slab @GL H-E	1	21-Aug-17	21-Aug-17	01-Sep-17	01-Sep-17	0%	0%	-10																			
A18165	Concreting 4/F Slab @GL H-E	1	25-Aug-17	25-Aug-17	06-Sep-17	06-Sep-17	0%	0%	-10																			
A18175	Concrete Curing 4/F Slab @GL H-E	3	26-Aug-17	28-Aug-17	07-Sep-17	09-Sep-17	0%	0%	-12																			
Area of Modular Towers																												
A57480	Scaffolding for 4/F Slab RC Works @GL L-H	4	30-Aug-17	02-Sep-17	09-Sep-17	13-Sep-17	0%	0%	-9																			
A57490	Rebar fixing of 4/F Slab @GL L-H	3	02-Sep-17	05-Sep-17	13-Sep-17	15-Sep-17	0%	0%	-9																			
A57500	Formworks of 4/F Slab @GL L-H	1	06-Sep-17	06-Sep-17	16-Sep-17	16-Sep-17	0%	0%	-9																			
A57510	Concreting 4/F Slab @GL L-H	1	07-Sep-17	07-Sep-17	18-Sep-17	18-Sep-17	0%	0%	-9																			
A57520	Concrete Curing 4/F Slab @GL L-H	3	08-Sep-17	10-Sep-17	19-Sep-17	21-Sep-17	0%	0%	-11																			
A57530	Scaffolding for 4/F Slab RC Works @GL H-E	4	01-Sep-17	05-Sep-17	14-Sep-17	18-Sep-17	0%	0%	-11																			
A57540	Rebar fixing of 4/F Slab @GL H-E	3	06-Sep-17	08-Sep-17	19-Sep-17	21-Sep-17	0%	0%	-11																			
A57550	Formworks of 4/F Slab @GL H-E	1	09-Sep-17	09-Sep-17	22-Sep-17	22-Sep-17	0%	0%	-11																			
A57560	Concreting 4/F Slab @GL H-E	1	11-Sep-17	11-Sep-17	23-Sep-17	23-Sep-17	0%	0%	-11																			
A57570	Concrete Curing 4/F Slab @GL H-E	3	12-Sep-17	14-Sep-17	24-Sep-17	26-Sep-17	0%	0%	-12																			
RC Works for 2/F Slab & Beams (6 nos. of Beam)																												
Area Between Modular Towers																												

Three Months Rolling Programme (3MRP) - Mth 22 - 31 July 2017

Activity ID	Activity Name	CMWP Dur.	CMWP - R.O.D5 Start	CMWP - R.O.D5 Finish	Actual / Forecast Start	Actual / Forecast Finish	Planned B/L % Complete	Actual % Complete	Finish Variance (+/-d)	Comments / Mitigating Measures	Gantt Chart														
											July				August				September				October		November
											02	09	16	23	30	06	13	20	27	03	10	17	24	01	08
M+ Sprinkler Water Tank																									
AB13590	Waterproofing & water test	12	20-May-17	01-Jun-17	29-Jul-17	09-Aug-17	100%	0%	-68	concrete defect being rectified															
AB13600	Plastering work (inside tank)	10	02-Jun-17	11-Jun-17	10-Aug-17	19-Aug-17	100%	0%	-68																
AB13610	Wall & floor tiling	14	12-Jun-17	25-Jun-17	20-Aug-17	02-Sep-17	100%	0%	-68																
AB13620	Application of sealer on soffit (outside tank)	7	26-Jun-17	03-Jul-17	03-Sep-17	09-Sep-17	100%	0%	-68																
AB13630	Cat ladder	7	04-Jul-17	10-Jul-17	10-Sep-17	16-Sep-17	100%	0%	-68																
AB13640	Hatch cover	7	11-Jul-17	17-Jul-17	17-Sep-17	23-Sep-17	100%	0%	-68																
M+ FS Water Tank																									
AB13660	Waterproofing & water test	12	12-Jun-17	23-Jun-17	20-Aug-17	31-Aug-17	100%	0%	-68																
AB13670	Plastering work (inside tank)	10	24-Jun-17	04-Jul-17	01-Sep-17	10-Sep-17	100%	0%	-68																
AB13680	Wall & floor tiling	14	05-Jul-17	18-Jul-17	11-Sep-17	24-Sep-17	100%	0%	-68																
AB13690	Application of sealer on soffit (outside tank)	7	19-Jul-17	25-Jul-17	25-Sep-17	01-Oct-17	100%	0%	-68																
AB13700	Cat ladder	7	26-Jul-17	01-Aug-17	03-Oct-17	10-Oct-17	42.86%	0%	-68																
AB13710	Hatch cover	7	02-Aug-17	08-Aug-17	11-Oct-17	17-Oct-17	0%	0%	-68																
M+ IR Tank																									
AB13730	Waterproofing & water test	12	05-Jul-17	16-Jul-17	11-Sep-17	22-Sep-17	100%	0%	-68																
AB13740	Plastering work (inside tank)	10	17-Jul-17	26-Jul-17	23-Sep-17	03-Oct-17	100%	0%	-68																
AB13750	Wall & floor tiling	14	27-Jul-17	09-Aug-17	04-Oct-17	18-Oct-17	14.29%	0%	-68																
AB13760	Application of sealer on soffit (outside tank)	7	10-Aug-17	16-Aug-17	19-Oct-17	25-Oct-17	0%	0%	-68																
AB13770	Cat ladder	7	17-Aug-17	23-Aug-17	26-Oct-17	02-Nov-17	0%	0%	-68																
AB13780	Hatch cover	7	24-Aug-17	30-Aug-17	03-Nov-17	09-Nov-17	0%	0%	-68																
Rain Water Retention Tank																									
AB13800	Waterproofing & water test	12	27-Jul-17	07-Aug-17	04-Oct-17	16-Oct-17	16.67%	0%	-68																
AB13810	Plastering work (inside tank)	10	08-Aug-17	17-Aug-17	17-Oct-17	26-Oct-17	0%	0%	-68																
AB13820	Wall & floor tiling	14	18-Aug-17	31-Aug-17	27-Oct-17	10-Nov-17	0%	0%	-68																
AB13830	Application of sealer on soffit (outside tank)	7	01-Sep-17	07-Sep-17	11-Nov-17	17-Nov-17	0%	0%	-68																
AB13840	Cat ladder	7	08-Sep-17	14-Sep-17	18-Nov-17	24-Nov-17	0%	0%	-68																
AB13850	Hatch cover	7	15-Sep-17	21-Sep-17	25-Nov-17	01-Dec-17	0%	0%	-68																
Plantrooms																									
FS Pump Room																									
Builders' Work																									
AB13370	Concrete plinth	5	30-Aug-17	03-Sep-17	20-Oct-17	24-Oct-17	0%	0%	-49																
AB13380	Wall rendering	7	04-Sep-17	10-Sep-17	25-Oct-17	01-Nov-17	0%	0%	-49																
AB13390	Floor Screeding	7	11-Sep-17	17-Sep-17	02-Nov-17	08-Nov-17	0%	0%	-49																
AB13400	Wall Epoxy Paint	7	18-Sep-17	24-Sep-17	09-Nov-17	15-Nov-17	0%	0%	-49																
AB13410	Sealer on ceiling soffit & application of epoxy paint on w	14	25-Sep-17	10-Oct-17	16-Nov-17	29-Nov-17	0%	0%	-49																
Electrical Systems																									
BS10000	FS Pump Room - MEP 2nd Fix	14	11-Oct-17	24-Oct-17	30-Nov-17	13-Dec-17	0%	0%	-49																
FS & Plumbing Systems																									
BS10010	FS Pump Room - Install FS Pump	45	25-Oct-17	09-Dec-17	14-Dec-17	30-Jan-18	0%	0%	-49																
IR/ RW/ ACC Condensate Pump Room & Water Meter Room																									
Builders' Work																									
AB13450	Concrete plinth	5	04-Sep-17	08-Sep-17	25-Oct-17	30-Oct-17	0%	0%	-49																
AB13460	Wall rendering	7	09-Sep-17	15-Sep-17	31-Oct-17	06-Nov-17	0%	0%	-49																
AB13470	Floor Screeding	7	16-Sep-17	22-Sep-17	07-Nov-17	13-Nov-17	0%	0%	-49																
AB13480	Wall Epoxy Paint	7	23-Sep-17	29-Sep-17	14-Nov-17	20-Nov-17	0%	0%	-49																
AB13490	Sealer on ceiling soffit & application of epoxy paint on w	14	30-Sep-17	15-Oct-17	21-Nov-17	04-Dec-17	0%	0%	-49																
Electrical Systems																									
BS10020	IR/ RW/ ACC Pump Room - MEP 2nd Fix	14	16-Oct-17	30-Oct-17	05-Dec-17	18-Dec-17	0%	0%	-49																
General Builders' Work																									
AB13320	Steel Post	14	20-May-17	03-Jun-17	29-Jul-17	11-Aug-17	100%	0%	-68																
AB13330	Blockwall	20	04-Jun-17	23-Jun-17	12-Aug-17	31-Aug-17	100%	0%	-68																
AB13340	Wall Plastering	14	23-Jun-17	08-Jul-17	31-Aug-17	14-Sep-17	100%	0%	-68																
AB13350	Floor Screeding	7	08-Jul-17	15-Jul-17	14-Sep-17	21-Sep-17	100%	0%	-68																
AB13360	Drywall (MEP consealed items, close up panel)	14	16-Aug-17	29-Aug-17	06-Oct-17	19-Oct-17	0%	0%	-49																
General BS Installation																									
Electrical Systems																									
AB13925	MEP 1st fix - B2F Sector A	30	30-Aug-17	28-Sep-17	20-Oct-17	19-Nov-17	0%	0%	-49																
AB13930	MEP 2nd fix - B2F Sector A	45	09-Oct-17	23-Nov-17	17-Dec-17	02-Feb-18	0%	0%	-68																
Plumbing & Drainage																									
ABS2060	P&D 1st fix - B2F Sector A	30	30-Aug-17	28-Sep-17	20-Oct-17	19-Nov-17	0%	0%	-49																
ABS2070	P&D 2nd fix - B2F Sector A	45	29-Sep-17	15-Nov-17	20-Nov-17	06-Jan-18	0%	0%	-49																

Three Months Rolling Programme (3MRP) - Mth 22 - 31 July 2017

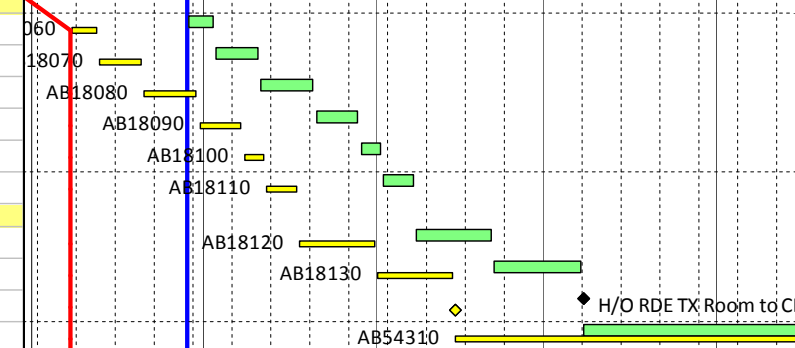
Activity ID	Activity Name	CMWP Dur.	CMWP - R.O.D5 Start	CMWP - R.O.D5 Finish	Actual / Forecast Start	Actual / Forecast Finish	Planned B/L % Complete	Actual % Complete	Finish Variance (+/-d)	Comments / Mitigating Measures	Gantt Chart															
											July				August				September				October			
											02	09	16	23	30	06	13	20	27	03	10	17	24	01	08	15
AB52330	P&D Final fix - B2F Sector C	30	03-Jul-17	01-Aug-17	07-Sep-17	09-Oct-17	86.67%	0%	-67																	
FS System																										
AB52340	FS 1st fix - B2F Sector C	30	15-Mar-17	16-Apr-17	15-Mar-17 A	20-Aug-17	100%	24%	-121	MEP work shared with wall finishing work																
AB52350	FS 2nd fix - B2F Sector C	45	10-Apr-17	29-May-17	10-Apr-17 A	05-Sep-17	100%	14%	-97	Pending for RCP submission and confirmation																
AB52360	FS Final fix - B2F Sector C	30	03-Jul-17	01-Aug-17	05-Sep-17	07-Oct-17	86.67%	0%	-65																	
HVAC System																										
AB52370	HVAC 1st fix - B2F Sector C	60	06-Feb-17	07-Apr-17	06-Feb-17 A	12-Sep-17	100%	24%	-151	MEP work shared with wall finishing work																
AB52380	HVAC 2nd fix - B2F Sector C	69	16-Jul-17	22-Sep-17	20-Jun-17 A	30-Sep-17	18.84%	8%	-7																	
AB52390	HVAC Final fix - B2F Sector C	30	23-Sep-17	24-Oct-17	30-Sep-17	02-Nov-17	0%	0%	-7																	
Workshops, Storages & Offices																										
Bulk Supply Storage, Museum Workshops, ICT Riser, Display Case -Plinth-Vitrine, Exhibit Workshops																										
AB12240	Construction of maintenance platform	48	23-Sep-17	12-Nov-17	03-Dec-17	22-Jan-18	0%	0%	-68																	
AB12250	Fire shutters/ security shutters installation	28	22-Oct-17	19-Nov-17	02-Jan-18	29-Jan-18	0%	0%	-68																	
Non-Art Loading Dock, Non-Art Holding/ Shipping/ Receiving Lock-up 1, Mail Room 1																										
AB12420	Ceiling framework	21	03-Jul-17	23-Jul-17	03-Sep-17	24-Sep-17	100%	0%	-62																	
AB12430	MEP dropper	7	17-Jul-17	23-Jul-17	17-Sep-17	24-Sep-17	100%	0%	-62																	
AB12440	Ceiling close-up	14	24-Jul-17	06-Aug-17	24-Sep-17	10-Oct-17	35.71%	0%	-62																	
AB12450	Skim coat, application of sealer on wall, soffit and floor	14	07-Aug-17	20-Aug-17	10-Oct-17	24-Oct-17	0%	0%	-62																	
AB12460	Wall protection & corner guards installation	14	21-Aug-17	03-Sep-17	24-Oct-17	08-Nov-17	0%	0%	-62																	
AB12470	Door & ironmongeries installation	7	04-Sep-17	10-Sep-17	08-Nov-17	15-Nov-17	0%	0%	-62																	
Uniforms & Equipment Storage, RDE Storage, General Maintenance																										
AB12480	Application of epoxy paint on wall and sealer on floor	21	21-Aug-17	10-Sep-17	24-Oct-17	15-Nov-17	0%	0%	-62																	
Security Briefing Room, Security Office, Security Locker Room																										
AB12290	Acoustic ceiling framework	21	03-Jul-17	23-Jul-17	03-Sep-17	24-Sep-17	100%	0%	-62																	
AB12300	MEP dropper	7	17-Jul-17	23-Jul-17	17-Sep-17	24-Sep-17	100%	0%	-62																	
AB12310	Acoustic ceiling close up	14	24-Jul-17	06-Aug-17	24-Sep-17	10-Oct-17	35.71%	0%	-62																	
AB12320	Application of epoxy paint on wall	14	07-Aug-17	20-Aug-17	10-Oct-17	24-Oct-17	0%	0%	-62																	
Toilets																										
Public Toilets & Toilet Lobby (Benchmark Toilet)																										
Toilet Block																										
AB50980	Waterproofing & water test complete	0		15-Aug-17		07-Oct-17	0%	0%	-51																	
AB50990	Protective floor screeding	2	16-Aug-17	17-Aug-17	07-Oct-17	09-Oct-17	0%	0%	-51																	
AB51000	Gypsum ceiling framework	7	18-Aug-17	24-Aug-17	09-Oct-17	16-Oct-17	0%	0%	-51																	
AB51010	Wall tiling	14	26-Aug-17	08-Sep-17	17-Oct-17	01-Nov-17	0%	0%	-51																	
AB51020	Polished concrete floor (by others)	3	09-Sep-17	11-Sep-17	01-Nov-17	04-Nov-17	0%	0%	-51																	
AB51030	Gypsum ceiling close-up	5	17-Sep-17	21-Sep-17	09-Nov-17	14-Nov-17	0%	0%	-51																	
AB51040	Taping & jointing and painting on ceiling	7	22-Sep-17	28-Sep-17	14-Nov-17	21-Nov-17	0%	0%	-51																	
AB51050	Emulsion paint to wall gypsum board (Baby Room only)	7	29-Sep-17	07-Oct-17	21-Nov-17	28-Nov-17	0%	0%	-51																	
AB51060	Cubicle partition installation	7	08-Oct-17	14-Oct-17	28-Nov-17	05-Dec-17	0%	0%	-51																	
AB51070	Terrazo countertop	5	15-Oct-17	19-Oct-17	05-Dec-17	10-Dec-17	0%	0%	-51																	
AB51080	Door & ironmongeries installation	3	20-Oct-17	22-Oct-17	10-Dec-17	13-Dec-17	0%	0%	-51																	
AB51090	Sanitary wares & fitting (by others)	5	23-Oct-17	27-Oct-17	13-Dec-17	18-Dec-17	0%	0%	-51																	
AB51100	Steel frame for vanity counter	7	19-Aug-17	25-Aug-17	10-Oct-17	17-Oct-17	0%	0%	-51																	
AB51110	MEP dropper	5	12-Sep-17	16-Sep-17	04-Nov-17	09-Nov-17	0%	0%	-51																	
Toilet Lobby																										
AB51130	Ceiling framework	7	19-Sep-17	25-Sep-17	11-Nov-17	18-Nov-17	0%	0%	-51																	
AB51140	Subframe & plywood furring for timber wall	6	26-Sep-17	01-Oct-17	18-Nov-17	24-Nov-17	0%	0%	-51																	
AB51150	MEP dropper	5	03-Oct-17	08-Oct-17	24-Nov-17	29-Nov-17	0%	0%	-51																	
AB51160	Smoked oak ceiling planks	4	09-Oct-17	12-Oct-17	29-Nov-17	03-Dec-17	0%	0%	-51																	
AB51170	Resilient layer application	3	13-Oct-17	15-Oct-17	03-Dec-17	06-Dec-17	0%	0%	-51																	
AB51180	2 layer plywood installation	2	16-Oct-17	17-Oct-17	06-Dec-17	08-Dec-17	0%	0%	-51																	
AB51190	Oak end-grain blockwood flooring	7	18-Oct-17	24-Oct-17	08-Dec-17	15-Dec-17	0%	0%	-51																	
AB51200	White oak timber wall plants	5	25-Oct-17	30-Oct-17	15-Dec-17	20-Dec-17	0%	0%	-51																	
AB51210	Floor screeding to receive resilient	2	17-Sep-17	18-Sep-17	09-Nov-17	11-Nov-17	0%	0%	-51																	
Lobby/ Lift Lobby																										
LT-01,LT-02, LT-03, LT-04, LT-11 & LT-12 Lift Lobby																										
AB12630	MEP 1st / 2nd fix complete (high level)	0		24-Oct-17		02-Nov-17	0%	0%	-7																	
AB12640	Fire rated metal ceiling framework	21	25-Oct-17	15-Nov-17	02-Nov-17	23-Nov-17	0%	0%	-7																	
B2/F - Zone D, Zone B & Zone A (Sector D)																										
MEP Plantrooms																										
ELV (First Access Areas)																										
Builders' Works																										

Three Months Rolling Programme (3MRP) - Mth 22 - 31 July 2017

Activity ID	Activity Name	CMWP Dur.	CMWP - R0.D5 Start	CMWP - R0.D5 Finish	Actual / Forecast Start	Actual / Forecast Finish	Planned B/L % Complete	Actual % Complete	Finish Variance (+/-d)	Comments / Mitigating Measures	July					August					September					October					November									
											22		23		24		25		26		27		28		29		30		01		02		03		04		05		06	
											02	09	16	23	30	06	13	20	27	03	10	17	24	01	08	15	22	29	05	12										
AB53540	CLP Installation for TX Room A	90	24-Jul-17	23-Oct-17	21-Aug-17	22-Nov-17	5.56%	0%	-29																															
AB53550	TX Room A Power ON	0		23-Oct-17		30-Nov-17	0%	0%	-37																															
Final Finishes																																								
AB16860	Final coat of paint on ceiling & wall	3	24-Oct-17	26-Oct-17	01-Dec-17	03-Dec-17	0%	0%	-37																															
AB16870	Door & ironmongeries installation	3	27-Oct-17	30-Oct-17	07-Dec-17	09-Dec-17	0%	0%	-40																															
LV Switch Room 1 & 2																																								
Builders' Work																																								
AB16890	Wall rendering	9	20-May-17	28-May-17	11-May-17 A	17-Jul-17 A	100%	100%	-47																															
AB16900	Wall tiling (1.5m high)	10	29-May-17	08-Jun-17	29-Jul-17	07-Aug-17	100%	0%	-59																															
AB16910	Floor screeding	4	09-Jun-17	12-Jun-17	25-Jul-17 A	30-Jul-17	100%	50%	-47																															
AB16920	Sealer on ceiling soffit & application of epoxy paint on w	6	13-Jun-17	18-Jun-17	26-Jun-17 A	19-Jul-17 A	100%	100%	-29																															
BS Installation																																								
AB16930	LV Switch Room 1 & 2 - MEP 2nd fix	14	19-Jun-17	03-Jul-17	29-Jul-17	11-Aug-17	100%	0%	-39																															
AB16940	LV Switch Room 1 & 2 - Main Switch Board 1 & 2 Site Tes	8	04-Jul-17	11-Jul-17	12-Aug-17	19-Aug-17	100%	0%	-39																															
AB53560	LV Switch Room 1 & 2 - Install Main Switch Board 1 & 2	60	12-Jul-17	09-Sep-17	20-Aug-17	20-Oct-17	28.33%	0%	-39																															
Final Finishes																																								
AB16950	Final coat of paint on ceiling & wall	3	10-Sep-17	12-Sep-17	21-Oct-17	23-Oct-17	0%	0%	-39																															
CBS Room																																								
Builder's Work																																								
AB16970	Construct plinth	5	20-May-17	24-May-17	29-Jul-17	02-Aug-17	100%	0%	-68																															
AB16980	Wall rendering	9	25-May-17	03-Jun-17	03-Aug-17	11-Aug-17	100%	0%	-68																															
AB16990	Wall tiling (1.5m high)	10	04-Jun-17	13-Jun-17	12-Aug-17	21-Aug-17	100%	0%	-68																															
AB17000	Floor screeding	4	14-Jun-17	17-Jun-17	22-Aug-17	25-Aug-17	100%	0%	-68																															
AB17010	Sealer on ceiling soffit & application of epoxy paint on w	6	18-Jun-17	23-Jun-17	26-Aug-17	31-Aug-17	100%	0%	-68																															
BS Installation																																								
AB17020	CBS Room - MEP 2nd fix	14	24-Jun-17	08-Jul-17	01-Sep-17	14-Sep-17	100%	0%	-68																															
AB17030	CBS Room - CBS Installation & Termination	60	09-Jul-17	06-Sep-17	15-Sep-17	16-Nov-17	33.33%	0%	-68																															
AB17035	CBS Room - T & C for CBS System	14	07-Sep-17	20-Sep-17	17-Nov-17	30-Nov-17	0%	0%	-68																															
Final Finishes																																								
AB17040	Final coat of paint on ceiling & wall	3	21-Sep-17	23-Sep-17	01-Dec-17	03-Dec-17	0%	0%	-68																															
Main I.T. Room																																								
Builder's Work																																								
AB53570	Construct plinth	5	20-May-17	24-May-17	29-Jul-17	02-Aug-17	100%	0%	-68																															
AB53580	Wall rendering	9	25-May-17	03-Jun-17	03-Aug-17	11-Aug-17	100%	0%	-68																															
AB53590	Wall tiling (1.5m high)	10	04-Jun-17	13-Jun-17	12-Aug-17	21-Aug-17	100%	0%	-68																															
AB53600	Floor screeding	4	14-Jun-17	17-Jun-17	22-Aug-17	25-Aug-17	100%	0%	-68																															
AB53610	Sealer on ceiling soffit & application of epoxy paint on w	6	18-Jun-17	23-Jun-17	26-Aug-17	31-Aug-17	100%	0%	-68																															
BS Installation																																								
AB17070	Main I.T. Room - MEP 2nd fix	14	24-Jun-17	08-Jul-17	01-Sep-17	14-Sep-17	100%	0%	-68																															
AB17080	Main I.T. Room - MEP Final fix	14	09-Jul-17	22-Jul-17	15-Sep-17	28-Sep-17	100%	0%	-68																															
Final Finishes																																								
AB17090	Final coat of paint on wall	3	23-Jul-17	25-Jul-17	29-Sep-17	01-Oct-17	100%	0%	-68																															
TBE																																								
Builder's Work																																								
AB53620	Construct plinth	5	20-May-17	24-May-17	29-Jul-17	02-Aug-17	100%	0%	-68																															
AB53630	Wall rendering	9	25-May-17	03-Jun-17	03-Aug-17	11-Aug-17	100%	0%	-68																															
AB53640	Wall tiling (1.5m high)	10	04-Jun-17	13-Jun-17	12-Aug-17	21-Aug-17	100%	0%	-68																															
AB53650	Floor screeding	4	14-Jun-17	17-Jun-17	22-Aug-17	25-Aug-17	100%	0%	-68																															
AB53660	Sealer on ceiling soffit & application of epoxy paint on w	6	18-Jun-17	23-Jun-17	26-Aug-17	31-Aug-17	100%	0%	-68																															
BS Installation																																								
AB17130	TBE Room - MEP 2nd fix	14	24-Jun-17	08-Jul-17	01-Sep-17	14-Sep-17	100%	0%	-68																															
AB17140	TBE Room - MEP final fix	14	09-Jul-17	22-Jul-17	15-Sep-17	28-Sep-17	100%	0%	-68																															
Final Finishes																																								
AB17150	Final coat of paint on wall	3	23-Jul-17	25-Jul-17	29-Sep-17	01-Oct-17	100%	0%	-68																															
AB17160	Sealer on floor	3	26-Jul-17	28-Jul-17	03-Oct-17	06-Oct-17	100%	0%	-68																															
ELV																																								
Builder's Work																																								
AB53670	Construct plinth	5	20-May-17	24-May-17	29-Jul-17	02-Aug-17	100%	0%	-68																															
AB53680	Wall rendering	9	25-May-17	03-Jun-17	03-Aug-17	11-Aug-17	100%	0%	-68																															
AB53690	Wall tiling (1.5m high)	10	04-Jun-17	13-Jun-17	12-Aug-17	21-Aug-17	100%	0%	-68																															
AB53700	Floor screeding	4	14-Jun-17	17-Jun-17	22-Aug-17	25-Aug-17	100%	0%	-68																															
AB53710	Sealer on ceiling soffit & application of epoxy paint on w	6	18-Jun-17	23-Jun-17	26-Aug-17	31-Aug-17	100%	0%	-68																															
BS Installation																																								

Three Months Rolling Programme (3MRP) - Mth 22 - 31 July 2017

Activity ID	Activity Name	CMWP Dur.	CMWP - R.O.D5 Start	CMWP - R.O.D5 Finish	Actual / Forecast Start	Actual / Forecast Finish	Planned B/L % Complete	Actual % Complete	Finish Variance (+/-d)	Comments / Mitigating Measures	July		August			September			October			November		
											22		23			24			25			26		
											02	09	16	23	30	06	13	20	27	03	10	17	24	01
Carriageway SEF Room																								
Builders' Work																								
AB18690	Sealer on ceiling soffit & on wall	7	19-Sep-17	25-Sep-17	12-Nov-17	19-Nov-17	0%	0%	-52															
BS Installation																								
AB18700	Carriageway SEF Room - MEP 2nd fix	14	26-Sep-17	11-Oct-17	19-Nov-17	03-Dec-17	0%	0%	-52															
AB18710	Carriageway SEF Room - MEP final fix	14	12-Oct-17	25-Oct-17	03-Dec-17	17-Dec-17	0%	0%	-52															
Final Finishes																								
AB18720	Final coat of paint on wall	3	26-Oct-17	29-Oct-17	17-Dec-17	20-Dec-17	0%	0%	-52															
Master Meter Room																								
Builders' Work																								
AB18750	Sealer on ceiling soffit & on wall	7	26-Sep-17	03-Oct-17	19-Nov-17	26-Nov-17	0%	0%	-52															
BS Installation																								
AB18760	Master Meter Room - MEP 2nd fix	14	04-Oct-17	18-Oct-17	26-Nov-17	10-Dec-17	0%	0%	-52															
AB18770	Master Meter Room - MEP final fix	14	19-Oct-17	02-Nov-17	10-Dec-17	24-Dec-17	0%	0%	-52															
Generator & Fuel Tanks																								
Builders' Work																								
AB54060	Waterproofing & water test	12	22-Jul-17	02-Aug-17	11-Sep-17	23-Sep-17	58.33%	0%	-52															
AB54070	Plastering work (inside tank)	10	03-Aug-17	12-Aug-17	23-Sep-17	04-Oct-17	0%	0%	-52															
AB54080	Wall & floor tiling	14	13-Aug-17	26-Aug-17	04-Oct-17	19-Oct-17	0%	0%	-52															
AB54090	Application of sealer on soffit (outside tank)	7	27-Aug-17	02-Sep-17	19-Oct-17	26-Oct-17	0%	0%	-52															
AB54100	Cat ladder	7	03-Sep-17	09-Sep-17	26-Oct-17	03-Nov-17	0%	0%	-52															
AB54110	Hatch cover	7	10-Sep-17	16-Sep-17	03-Nov-17	10-Nov-17	0%	0%	-52															
Oil Pump Room & Day Tanks																								
Builder's Work																								
AB54120	Waterproofing & water test	12	22-Jul-17	02-Aug-17	11-Sep-17	23-Sep-17	58.33%	0%	-52															
AB54130	Plastering work (inside tank)	10	03-Aug-17	12-Aug-17	23-Sep-17	04-Oct-17	0%	0%	-52															
AB54140	Wall & floor tiling	14	13-Aug-17	26-Aug-17	04-Oct-17	19-Oct-17	0%	0%	-52															
AB54150	Application of sealer on soffit (outside tank)	7	27-Aug-17	02-Sep-17	19-Oct-17	26-Oct-17	0%	0%	-52															
AB54160	Cat ladder	7	03-Sep-17	09-Sep-17	26-Oct-17	03-Nov-17	0%	0%	-52															
AB54170	Hatch cover	7	10-Sep-17	16-Sep-17	03-Nov-17	10-Nov-17	0%	0%	-52															
BS Installation																								
AB18880	Oil Pump Room - MEP 2nd fix	14	03-Sep-17	16-Sep-17	26-Oct-17	10-Nov-17	0%	0%	-52															
AB18890	Oil Pump Room - Install Oil Pump Set & SAT	30	17-Sep-17	18-Oct-17	10-Nov-17	10-Dec-17	0%	0%	-52															
Final Finishes																								
AB18900	Final coat of paint on wall	3	19-Oct-17	21-Oct-17	10-Dec-17	13-Dec-17	0%	0%	-52															
AB18910	Sealer on floor	3	22-Oct-17	24-Oct-17	13-Dec-17	16-Dec-17	0%	0%	-52															
AB18920	Door & ironmongeries installation	3	25-Oct-17	27-Oct-17	16-Dec-17	19-Dec-17	0%	0%	-52															
EV Charger Meter Room																								
Builder's Work																								
AB18930	Sealer on ceiling soffit & application of epoxy paint on w	7	26-Sep-17	03-Oct-17	19-Nov-17	26-Nov-17	0%	0%	-52															
BS Installation																								
AB18940	EV Charger Meter Room - MEP 2nd fix	14	04-Oct-17	18-Oct-17	26-Nov-17	10-Dec-17	0%	0%	-52															
AB18950	EV Charger Meter Room - MEP 3rd fix	14	19-Oct-17	02-Nov-17	10-Dec-17	24-Dec-17	0%	0%	-52															
DG Store																								
Builders' Work																								
AB18990	Sealer on ceiling soffit & application of epoxy paint on w	7	04-Oct-17	11-Oct-17	26-Nov-17	03-Dec-17	0%	0%	-52															
BS Installation																								
AB19000	DG Store - MEP 2nd fix	14	12-Oct-17	25-Oct-17	03-Dec-17	17-Dec-17	0%	0%	-52															
AB19010	DG Store - MEP final fix	14	26-Oct-17	09-Nov-17	17-Dec-17	03-Jan-18	0%	0%	-52															
B1/F - Zone GFU2 (Sector G)																								
Plantrooms																								
RDE Transformer Room																								
Builders' Work																								
AB18060	Construct plinth	5	08-Jul-17	12-Jul-17	29-Jul-17	02-Aug-17	100%	0%	-21															
AB18070	Wall rendering	8	13-Jul-17	20-Jul-17	03-Aug-17	10-Aug-17	100%	0%	-21															
AB18080	Wall tiling (1.5m high)	10	21-Jul-17	30-Jul-17	11-Aug-17	20-Aug-17	80%	0%	-21															
AB18090	Floor screeding	8	31-Jul-17	07-Aug-17	21-Aug-17	28-Aug-17	0%	0%	-21															
AB18100	Installation of cable trench cover	4	08-Aug-17	11-Aug-17	29-Aug-17	01-Sep-17	0%	0%	-21															
AB18110	Sealer on ceiling soffit & application of epoxy paint on w	6	12-Aug-17	17-Aug-17	02-Sep-17	07-Sep-17	0%	0%	-21															
BS Installation																								
AB18120	RDE Transformer Room - MEP 2nd fix	14	18-Aug-17	31-Aug-17	08-Sep-17	21-Sep-17	0%	0%	-21															
AB18130	Inspection by CLP	14	01-Sep-17	14-Sep-17	22-Sep-17	07-Oct-17	0%	0%	-21															
AB54300	H/O RDE TX Room to CLP	0	15-Sep-17		08-Oct-17		0%	0%	-21															
AB54310	CLP Installation for RDE TX Room	60	15-Sep-17	16-Nov-17	08-Oct-17	07-Dec-17	0%	0%	-21															



Three Months Rolling Programme (3MRP) - Mth 22 - 31 July 2017

Activity ID	Activity Name	CMWP Dur.	CMWP - R0.D5 Start	CMWP - R0.D5 Finish	Actual / Forecast Start	Actual / Forecast Finish	Planned B/L % Complete	Actual % Complete	Finish Variance (+/-d)	Comments / Mitigating Measures	July					August					September					October					November					
											22					23					24					25					26					
											02	09	16	23	30	06	13	20	27	03	10	17	24	01	08	15	22	29	05	12						
BS Installation																																				
AB23820	MEP Room - MEP 2nd fix	14	31-Aug-17	13-Sep-17	09-Nov-17	23-Nov-17	0%	0%	-67																											
AB23830	MEP Room - MEP final fix	14	14-Sep-17	27-Sep-17	23-Nov-17	07-Dec-17	0%	0%	-67																											
Final Finishes																																				
AB23840	Final coat of paint on wall	3	28-Sep-17	30-Sep-17	07-Dec-17	10-Dec-17	0%	0%	-67																											
AB23850	Sealer on floor	3	01-Oct-17	04-Oct-17	10-Dec-17	13-Dec-17	0%	0%	-67																											
AB23860	Door & ironmongeries installation	3	06-Oct-17	08-Oct-17	13-Dec-17	16-Dec-17	0%	0%	-67																											
Workshops, Storages & Offices																																				
Storage																																				
AB23870	Application of sealer on wall, soffit and floor	7	24-Aug-17	30-Aug-17	02-Nov-17	09-Nov-17	0%	0%	-67																											
AB23880	Door & ironmongeries installation	7	01-Oct-17	09-Oct-17	09-Nov-17	16-Nov-17	0%	0%	-36																											
1/F - Zone A2 (Sector C)																																				
General Builders' Work																																				
AB25420	Maintenance platform @ 1M/F Sector C complete	0		20-Sep-17		25-Oct-17	0%	0%	-32																											
AB25430	Wall Plastering	14	21-Sep-17	06-Oct-17	25-Oct-17	09-Nov-17	0%	0%	-32																											
AB25440	Drywall (MEP consealed items, close up panel)	21	07-Oct-17	27-Oct-17	09-Nov-17	30-Nov-17	0%	0%	-32																											
General BS Installation																																				
Electrical System																																				
AB55410	MEP 1st fix - 1F Sector C	30	21-Sep-17	22-Oct-17	25-Oct-17	25-Nov-17	0%	0%	-32																											
AB55420	MEP 2nd fix - 1F Sector C	30	23-Oct-17	22-Nov-17	25-Nov-17	27-Dec-17	0%	0%	-32																											
Plumbing & Drainage																																				
AB55440	P&D 1st fix - 1F Sector C	30	21-Sep-17	22-Oct-17	25-Oct-17	25-Nov-17	0%	0%	-32																											
AB55450	P&D 2nd fix - 1F Sector C	30	23-Oct-17	22-Nov-17	25-Nov-17	27-Dec-17	0%	0%	-32																											
FS System																																				
AB55470	FS 1st fix - 1F Sector C	30	21-Sep-17	22-Oct-17	25-Oct-17	25-Nov-17	0%	0%	-32																											
AB55480	FS 2nd fix - 1F Sector C	30	23-Oct-17	22-Nov-17	25-Nov-17	27-Dec-17	0%	0%	-32																											
HVAC System																																				
AB55500	HVAC 1st fix - 1F Sector C	30	21-Sep-17	22-Oct-17	25-Oct-17	25-Nov-17	0%	0%	-32																											
AB55510	HVAC 2nd fix - 1F Sector C	30	23-Oct-17	22-Nov-17	25-Nov-17	27-Dec-17	0%	0%	-32																											
1M/F - Zone A2 (Sector C)																																				
AB26400	Maintenance platform installation	75	08-Jul-17	20-Sep-17	09-Aug-17	25-Oct-17	28%	0%	-32																											
General BS Installation																																				
Electrical System																																				
AB55890	MEP 1st fix - 1MF Sector A	30	08-Jul-17	06-Aug-17	09-Aug-17	08-Sep-17	70%	0%	-32																											
AB55900	MEP 2nd fix - 1MF Sector A	45	07-Aug-17	20-Sep-17	08-Sep-17	25-Oct-17	0%	0%	-32																											
AB55910	MEP Final fix - 1MF Sector A	30	21-Sep-17	22-Oct-17	25-Oct-17	25-Nov-17	0%	0%	-32																											
Plumbing & Drainage																																				
AB55920	P&D 1st fix - 1MF Sector A	30	08-Jul-17	06-Aug-17	09-Aug-17	08-Sep-17	70%	0%	-32																											
AB55930	P&D 2nd fix - 1MF Sector A	45	07-Aug-17	20-Sep-17	08-Sep-17	25-Oct-17	0%	0%	-32																											
AB55940	P&D Final fix - 1MF Sector A	30	21-Sep-17	22-Oct-17	25-Oct-17	25-Nov-17	0%	0%	-32																											
FS System																																				
AB55950	FS 1st fix - 1MF Sector A	30	08-Jul-17	06-Aug-17	09-Aug-17	08-Sep-17	70%	0%	-32																											
AB55960	FS 2nd fix - 1MF Sector A	45	07-Aug-17	20-Sep-17	08-Sep-17	25-Oct-17	0%	0%	-32																											
AB55970	FS Final fix - 1MF Sector A	30	21-Sep-17	22-Oct-17	25-Oct-17	25-Nov-17	0%	0%	-32																											
HVAC System																																				
AB55980	HVAC 1st fix - 1MF Sector A	30	08-Jul-17	06-Aug-17	09-Aug-17	08-Sep-17	70%	0%	-32																											
AB55990	HVAC 2nd fix - 1MF Sector A	45	07-Aug-17	20-Sep-17	08-Sep-17	25-Oct-17	0%	0%	-32																											
AB56000	HVAC Final fix - 1MF Sector A	30	21-Sep-17	22-Oct-17	25-Oct-17	25-Nov-17	0%	0%	-32																											
2/F - Zone A5 (Sector C)																																				
General Builders' Work																																				
AB27860	Wall Plastering	21	01-Oct-17	23-Oct-17	04-Dec-17	27-Dec-17	0%	0%	-61																											
AB27870	Floor Screeding	21	24-Oct-17	14-Nov-17	27-Dec-17	18-Jan-18	0%	0%	-61																											
General BS Installation																																				
Electrical System																																				
AB56370	MEP 1st fix - 2F Sector C	30	01-Oct-17	02-Nov-17	04-Dec-17	06-Jan-18	0%	0%	-61																											
Plumbing & Drainage																																				
AB56400	P&D 1st fix - 2F Sector C	30	01-Oct-17	02-Nov-17	04-Dec-17	06-Jan-18	0%	0%	-61																											
FS System																																				
AB56430	FS 1st fix - 2F Sector C	30	01-Oct-17	02-Nov-17	04-Dec-17	06-Jan-18	0%	0%	-61																											
HVAC System																																				
AB56460	HVAC 1st fix - 2F Sector C	30	01-Oct-17	02-Nov-17	04-Dec-17	06-Jan-18	0%	0%	-61																											
3/F - Zone M (Sector C) - Tower Footprint																																				
General Builders' Work																																				
AB28650	Blockwall	10	05-Jul-17	14-Jul-17	07-Aug-17	17-Aug-17	100%	0%	-34																											
AB28660	Wall Plastering	14	15-Jul-17	28-Jul-17	17-Aug-17	31-Aug-17	100%	0%	-34																											

Three Months Rolling Programme (3MRP) - Mth 22 - 31 July 2017

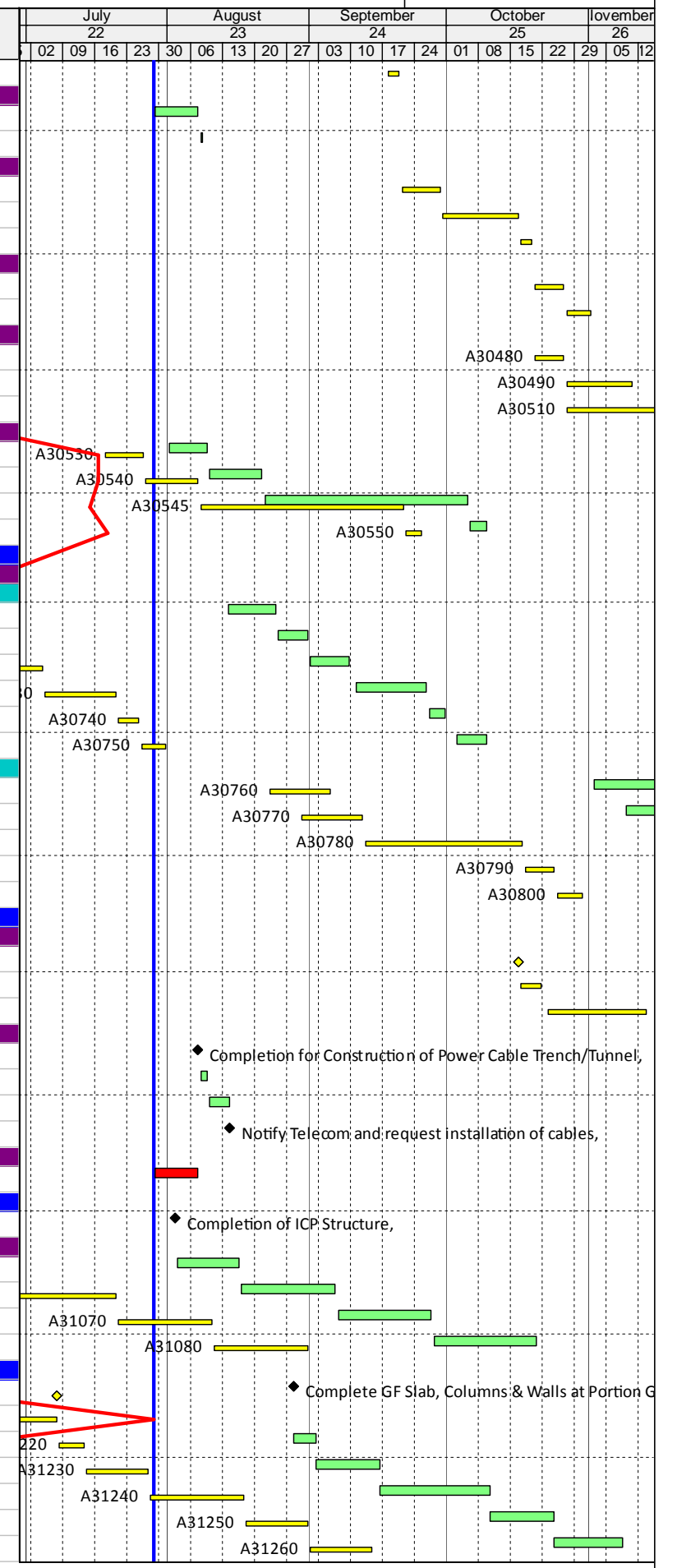
Activity ID	Activity Name	CMWP Dur.	CMWP - R0.D5 Start	CMWP - R0.D5 Finish	Actual / Forecast Start	Actual / Forecast Finish	Planned B/L % Complete	Actual % Complete	Finish Variance (+/-d)	Comments / Mitigating Measures	July					August			September			October		November						
											22					23			24			25		26						
											02	09	16	23	30	06	13	20	27	03	10	17	24	01	08	15	22	29	05	
A55740	Plastering & screeding	10	10-May-17	20-May-17	10-May-17 A	31-Jul-17	100%	80%	-59	remark: 20% is screeding & final paint																				
A55750	Channel grating & trench cover installation	7	31-May-17	07-Jun-17	01-Aug-17	08-Aug-17	100%	0%	-52																					
BS Installation																														
A55760	SPS - MEP 2nd Fix for Pump Station Service Yard	14	08-Jun-17	23-Jun-17	29-May-17 A	02-Aug-17	100%	75%	-33																					
Final Finishes																														
A56490	Install roller shutter (for security)	7	17-Jun-17	24-Jun-17	29-Jul-17	05-Aug-17	100%	0%	-35																					
A56500	Apply paint on ceiling & wall	10	26-Jun-17	07-Jul-17	19-Jun-17 A	23-Jun-17 A	100%	100%	12																					
A56510	Apply floor sealer	5	08-Jul-17	13-Jul-17	29-Jul-17	03-Aug-17	100%	0%	-18																					
A56520	Door & ironmongeries installation	3	14-Jul-17	17-Jul-17	26-Jun-17 A	01-Aug-17	100%	10%	-13																					
Cleansing & Flushing Water Tank Room																														
Builders' Work																														
A56190	Plastering & screeding	6	10-May-17	16-May-17	10-May-17 A	29-Jul-17	100%	95%	-61	remark: 20% is screeding & final paint																				
A56200	Install glass-fibre water tank supporting frame	6	25-May-17	01-Jun-17	29-Jul-17	05-Aug-17	100%	0%	-54																					
BS Installation																														
A32160	SPS - Install Pumps, Valves & Equipment	36	25-May-17	07-Jul-17	21-Jun-17 A	03-Aug-17	100%	80%	-23																					
A32170	SPS - Install Water Tank, Pipeworks & Testing	36	02-Jun-17	14-Jul-17	20-Jun-17 A	07-Aug-17	100%	70%	-19																					
Final Finishes																														
A56210	Apply paint coating on ceiling & wall	7	15-Jul-17	22-Jul-17	19-Jun-17 A	23-Jun-17 A	100%	100%	25																					
A56220	Apply floor sealer	3	24-Jul-17	26-Jul-17	05-Aug-17	09-Aug-17	100%	0%	-11																					
A56230	Door & ironmongeries installation	3	24-Jul-17	26-Jul-17	05-Aug-17	09-Aug-17	100%	0%	-11																					
Sprinkler Tank																														
A56240	Waterproofing & water test	12	08-May-17	20-May-17	08-May-17 A	11-Jul-17 A	100%	100%	-41																					
A56250	Plaster work (inside tank)	8	03-Jun-17	12-Jun-17	22-May-17 A	07-Aug-17	100%	0%	-47																					
A56270	Install Cat ladder & hatch cover	4	19-Jun-17	22-Jun-17	21-Jul-17 A	22-Aug-17 A	100%	100%	-50																					
FS Tank																														
A56280	Waterproofing & water test	12	10-May-17	23-May-17	10-May-17 A	11-Jul-17 A	100%	100%	-39																					
A56290	Plaster work (inside tank)	8	03-Jun-17	12-Jun-17	22-May-17 A	07-Aug-17	100%	0%	-47																					
A56310	Install Cat ladder & hatch cover	4	19-Jun-17	22-Jun-17	21-Jul-17 A	25-Jul-17 A	100%	100%	-26																					
Accessible Unisex Toilet																														
Builders' Work																														
A56340	Wall & floor tiling	6	29-May-17	05-Jun-17	19-Jun-17 A	08-Jul-17 A	100%	100%	-27																					
A56350	Gypsum/cement board ceiling framework & close-up	6	06-Jun-17	12-Jun-17	22-Jun-17 A	03-Aug-17	100%	30%	-43																					
BS Installation																														
A56360	SPS - MEP 2nd Fix for Accessible Unisex Toilet	14	13-Jun-17	28-Jun-17	10-Jul-17 A	03-Aug-17	100%	50%	-30																					
Final Finishes																														
A56370	Apply Taping joint & painting on ceiling	4	29-Jun-17	04-Jul-17	04-Aug-17	07-Aug-17	100%	0%	-29																					
A56380	Sanitary wares & fitting installation	5	05-Jul-17	10-Jul-17	08-Aug-17	10-Aug-17	100%	0%	-27																					
A56390	Door & ironmongeries installation	3	11-Jul-17	13-Jul-17	08-Aug-17	09-Aug-17	100%	0%	-23																					
A56400	Mirror installation	1	14-Jul-17	14-Jul-17	10-Aug-17	10-Aug-17	100%	0%	-23																					
Corridor																														
Builders' Work																														
A31880	Plastering & screeding	7	02-Jun-17	09-Jun-17	24-Jun-17 A	31-Jul-17	100%	85%	-42																					
A31890	Wall tiling & Install chequered plate on floor	6	10-Jun-17	16-Jun-17	31-Jul-17	07-Aug-17	100%	0%	-42																					
BS Installation																														
A56180	SPS - MEP 2nd Fix for Corridor	14	17-Jun-17	04-Jul-17	26-Jun-17 A	14-Aug-17	100%	5%	-34																					
Final Finishes																														
A31910	FRP ceiling	7	05-Jul-17	12-Jul-17	14-Aug-17	22-Aug-17	100%	0%	-34																					
A56410	Apply paint on ceiling & wall	7	13-Jul-17	20-Jul-17	23-Jun-17 A	31-Jul-17	100%	80%	-8																					
A56420	Door & ironmongeries installation	7	21-Jul-17	28-Jul-17	31-Jul-17	08-Aug-17	100%	0%	-8																					
Staircase																														
Builders' Work																														
A56430	Wall Plastering & screeding	12	12-May-17	25-May-17	12-May-17 A	01-Aug-17	100%	80%	-55																					
A56440	Install handrail / balustrade	7	26-May-17	03-Jun-17	01-Aug-17	09-Aug-17	100%	0%	-55																					
BS Installation																														
A56450	SPS - MEP 2nd Fix for Staircases	14	05-Jun-17	20-Jun-17	26-Jun-17 A	08-Aug-17	100%	40%	-40																					
Final Finishes																														
A56460	Floor tiling	6	21-Jun-17	27-Jun-17	03-Jul-17 A	17-Jul-17 A	100%	100%	-16																					
A56470	Apply paint on ceiling & wall	7	28-Jun-17	06-Jul-17	19-Jun-17 A	23-Jun-17 A	100%	100%	11																					
A56480	Install Door & ironmongeries	3	07-Jul-17	10-Jul-17	29-Jul-17	01-Aug-17	100%	0%	-19																					
SPS - External Envelope																														
A32220	SPS - Install GRC Architectural Louvre & Bracket	7	05-Jun-17	12-Jun-17	21-Jul-17 A	31-Jul-17	100%	75%	-41																					
A32230	SPS - Erect steel frame for perforated corrugated cladding	12	05-Jun-17	17-Jun-17	29-Jul-17	11-Aug-17	100%	0%	-46																					
A56560	SPS - Install perforated corrugated cladding	12	19-Jul-17	01-Aug-17	18-Aug-17	26-Aug-17	75%	0%	-22																					

Three Months Rolling Programme (3MRP) - Mth 22 - 31 July 2017

Activity ID	Activity Name	CMWP Dur.	CMWP - R0.D5 Start	CMWP - R0.D5 Finish	Actual / Forecast Start	Actual / Forecast Finish	Planned B/L % Complete	Actual % Complete	Finish Variance (+/-d)	Comments / Mitigating Measures	July		August			September			October			November	
											22	23	06	13	20	27	03	10	17	24	01	08	15
Zone 1																							
A36430	ICP (FS-Wet) - B2/F Building Services (1st Fix)	40	12-Oct-17	28-Nov-17	19-Dec-17	07-Feb-18	0%	0%	-58														A36430
Zone 2																							
A36450	ICP (FS-Wet) - B2/F Building Services (1st Fix)	40	28-Jul-17	12-Sep-17	04-Oct-17	22-Nov-17	2.5%	0%	-58		A36450												
A36460	ICP (FS-Wet) - B2/F Building Services (2nd / Final Fix) &	60	03-Oct-17	13-Dec-17	11-Dec-17	26-Feb-18	0%	0%	-58														A36460
Fire Services (Dry)																							
Zone 1																							
A36470	ICP (FS-Dry- B2/F Building Services (1st Fix)	40	12-Oct-17	28-Nov-17	19-Dec-17	07-Feb-18	0%	0%	-58														A36470
Zone 2																							
A36490	ICP (FS-Dry) - B2/F Building Services (1st Fix)	40	28-Jul-17	12-Sep-17	04-Oct-17	22-Nov-17	2.5%	0%	-58		A36490												
A36500	ICP (FS-Dry) - B2/F Building Services (2nd / Final Fix) & T	60	03-Oct-17	13-Dec-17	11-Dec-17	26-Feb-18	0%	0%	-58														A36500
Lift Installation																							
A36510	Handover of Completed Lift Shaft (Lift 1 & Lift 2)	0	07-Sep-17		31-Oct-17*		0%	0%	-44														Handov
A36520	ICP (Lift 1 & 2) - Rail & Door Installation	10	07-Sep-17	18-Sep-17	31-Oct-17	11-Nov-17	0%	0%	-44														
A36530	ICP (Lift 1 & 2) - Machine Room Installation	12	19-Sep-17	03-Oct-17	11-Nov-17	25-Nov-17	0%	0%	-44														
A36540	ICP (Lift 1 & 2) - Pit Installation	6	04-Oct-17	11-Oct-17	25-Nov-17	02-Dec-17	0%	0%	-44														
A36550	ICP (Lift 1 & 2) - Stable Power Installation	0		11-Oct-17		02-Dec-17	0%	0%	-44														
A36560	ICP (Lift 1 & 2) - Car Installation	14	12-Oct-17	27-Oct-17	02-Dec-17	19-Dec-17	0%	0%	-44														
ELV Extra Low Voltage (Site Wide)																							
Zone 1																							
A36600	ICP (ELV) - B2/F Building Services (1st Fix)	40	12-Oct-17	28-Nov-17	19-Dec-17*	07-Feb-18	0%	0%	-58														A36600
B1/F Level																							
CLP Works Leading to Energization / Power-On																							
Electrical (B1/F) - Transformer Room (B128)																							
A36650	CLP Transformer - Builders Works & BS Installation	16	10-Apr-17	02-May-17	10-Apr-17 A	05-Aug-17	100%	56.25%	-79														
A36660	Inspection for Handover to CLP	5	29-May-17	03-Jun-17	07-Aug-17	11-Aug-17	100%	0%	-58														
A36670	CLP Transformer Installation Works	90	04-Jun-17	01-Sep-17	12-Aug-17	09-Nov-17	61.11%	0%	-69														
A36680	CLP Power-On & Energization	0		21-Sep-17		09-Nov-17	0%	0%	-39														
Electrical (B1/F) - LV Switch room (B126)																							
A36690	LV Switch room - Builders Works & BS Installation	30	26-Jun-17	31-Jul-17	29-Jul-17	01-Sep-17	93.33%	0%	-28														
A36700	LV Switch room - Install LV Switch Board & Testing	45	01-Aug-17	21-Sep-17	02-Sep-17	26-Oct-17	0%	0%	-28		A36700												
External Electrical Power and Lead-In Cable Ducts																							
A36710	Construct (4x) 2.5x2.2x1.2m Electrical Draw Pits	36	01-Jun-17	13-Jul-17	01-Aug-17	12-Sep-17	100%	0%	-51														
A36720	Install 12x150dia @ 2-Layers GI Ducts	36	14-Jun-17	26-Jul-17	14-Aug-17	25-Sep-17	100%	0%	-51														
A36730	MV Cable Laying & Testing	30	10-Jul-17	12-Aug-17	07-Sep-17	14-Oct-17	56.67%	0%	-51		A36730												
A36740	MV Cable Termination and Test (by CLP)	12	14-Aug-17	26-Aug-17	14-Oct-17	30-Oct-17	0%	0%	-51			A36740											
A36750	Pre-Energization Checked & Testing	6	28-Aug-17	02-Sep-17	30-Oct-17	06-Nov-17	0%	0%	-51														
A36760	MV Syst Energized / Syst Commissioning Acceptance Tes	6	04-Sep-17	09-Sep-17	06-Nov-17	13-Nov-17	0%	0%	-51														
A36770	Power Energization Complete and Ready for Power-On	0		09-Sep-17		13-Nov-17	0%	0%	-51														
Electrical (B1/F) - General Works																							
A36780	ICP (Electrical) - B1/F Building Services (1st Fix)	60	07-Oct-17	16-Dec-17	21-Nov-17	01-Feb-18	0%	0%	-37														A36780
Mechanical General																							
A36810	ICP (MVAC) - B1/F Building Services (1st Fix)	60	31-Aug-17	11-Nov-17	16-Oct-17	27-Dec-17	0%	0%	-37														A36810
A36820	ICP (MVAC) - B1/F Building Services (2nd / Final Fix) & T	75	19-Oct-17	18-Jan-18	02-Dec-17	06-Mar-18	0%	0%	-37														A36820
FS Plant Rooms (FS Pump Room and Security Room)																							
A36830	FS Rooms - Builders Works & BS Installation	45	26-Jun-17	17-Aug-17	25-Aug-17	19-Oct-17	62.22%	0%	-51														
A36840	FS Rooms - Install Pumps, Equipment & Cabinet	45	25-Jul-17	14-Sep-17	22-Sep-17	17-Nov-17	8.89%	0%	-51		A36840												
A36850	FS Rooms - Install Fresh / Potable Pipeworks & Testing	30	29-Aug-17	03-Oct-17	31-Oct-17	05-Dec-17	0%	0%	-51														
A36860	Install Water Meter Cabinet	12	04-Oct-17	18-Oct-17	05-Dec-17	19-Dec-17	0%	0%	-51														A36860
Fire Services (Wet)																							
Zone 1																							
A36870	ICP (FS-Wet) - B1/F Building Services (1st Fix)	40	27-Jul-17	11-Sep-17	08-Sep-17	26-Oct-17	5%	0%	-37		A36870												
A36880	ICP (FS-Wet) - B1/F Building Services (2nd / Final Fix) &	50	08-Sep-17	08-Nov-17	24-Oct-17	21-Dec-17	0%	0%	-37														
Zone 2																							
A36890	ICP (FS-Wet) - B1/F Building Services (1st Fix)	50	12-Sep-17	11-Nov-17	27-Oct-17	27-Dec-17	0%	0%	-37														
A36900	ICP (FS-Wet) - B1/F Building Services (2nd / Final Fix) &	60	27-Oct-17	09-Jan-18	11-Dec-17	24-Feb-18	0%	0%	-37														A36900
Fire Services (Dry)																							
Zone 1																							
A36910	ICP (FS-Dry) - B1/F Building Services (1st Fix)	40	27-Jul-17	11-Sep-17	08-Sep-17	26-Oct-17	5%	0%	-37		A36910												
A36920	ICP (FS-Dry) - B1/F Building Services (2nd / Final Fix) & T	50	08-Sep-17	08-Nov-17	24-Oct-17	21-Dec-17	0%	0%	-37														
Zone 2																							
A36930	ICP (FS-Dry) - B1/F Building Services (1st Fix)	50	12-Sep-17	11-Nov-17	27-Oct-17	27-Dec-17	0%	0%	-37														
A36940	ICP (FS-Dry) - B1/F Building Services (2nd / Final Fix) & T	60	27-Oct-17	09-Jan-18	11-Dec-17	24-Feb-18	0%	0%	-37														A36940

Three Months Rolling Programme (3MRP) - Mth 22 - 31 July 2017

Activity ID	Activity Name	CMWP Dur.	CMWP - R0.D5 Start	CMWP - R0.D5 Finish	Actual / Forecast Start	Actual / Forecast Finish	Planned B/L % Complete	Actual % Complete	Finish Variance (+/-d)	Comments / Mitigating Measures	Gantt Chart																					
											July 22			August 23			September 24			October 25			November 26									
											02	09	16	23	30	06	13	20	27	03	10	17	24	01	08	15	22	29	05	12		
A30390	Test & Inspection	3	18-Sep-17	20-Sep-17	28-Nov-17	30-Nov-17	0%	0%	-58																							
Power Cable 11Kv at Gridline A-C / 14																																
A30400	Construct Cable Trench & Install Cable Ducts (Approx 43)	8	20-May-17	29-May-17	29-Jul-17*	07-Aug-17	100%	0%	-58																							
A30410	Tests & inspection	1	31-May-17	31-May-17	08-Aug-17	08-Aug-17	100%	0%	-58																							
Power Cable 11kv at Gridline C-M / 14																																
A30420	Construct Drawpits E6 & E7	8	21-Sep-17	29-Sep-17	01-Dec-17	09-Dec-17	0%	0%	-58																							
A30430	Construct Cable Trench / Tunnel & Install Cable Ducts (A)	12	30-Sep-17	16-Oct-17	11-Dec-17	23-Dec-17	0%	0%	-58																							
A30440	Tests & inspection	3	17-Oct-17	19-Oct-17	27-Dec-17	29-Dec-17	0%	0%	-58																							
Power Cable 11Kv at Gridline 13-14 / M																																
A30450	Construct Draw pit E8	6	20-Oct-17	26-Oct-17	30-Dec-17	06-Jan-18	0%	0%	-58																							
A30460	Construct Cable Trench / Tunnel & Install Cable Ducts (A)	4	27-Oct-17	01-Nov-17	08-Jan-18	11-Jan-18	0%	0%	-58																							
LV Power from DCS to M+ Seawater Pump Cells																																
A30480	Excavate trench & Install Shoring from DCS to M+ Seawa	6	20-Oct-17	26-Oct-17	30-Dec-17	06-Jan-18	0%	0%	-58																							
A30490	Construct Cable Trench & Lay 4Nos of DN150 & 5Nos of	12	27-Oct-17	10-Nov-17	08-Jan-18	20-Jan-18	0%	0%	-58																							
A30510	Construct 6 Nos of Drawpit	18	27-Oct-17	17-Nov-17	08-Jan-18	27-Jan-18	0%	0%	-58																							
ICP External Power Cable Trench For CLP Lead In																																
A30530	Construct 2 Nos of Drawpit at the ICP Entrance	8	18-Jul-17	26-Jul-17	01-Aug-17	09-Aug-17	100%	0%	-12																							
A30540	Install 10x200 Dia. GI Duct In 2 Layers & 1x100Dia Duct v	10	27-Jul-17	07-Aug-17	10-Aug-17	21-Aug-17	20%	0%	-12																							
A30545	Lay power Lead-in for ICP & Inspection (by CLP)	45	08-Aug-17	21-Sep-17	22-Aug-17	05-Oct-17	0%	0%	-14																							
A30550	Backfill to Ground Level	3	22-Sep-17	25-Sep-17	06-Oct-17	09-Oct-17	0%	0%	-10																							
Gas																																
Gas Main at Portion M01																																
Gas Main RDE connection along Gridline E' - I' / 1'																																
A30700	Trench for Underground Utilities	10	06-Jun-17	16-Jun-17	14-Aug-17	24-Aug-17	100%	0%	-58																							
A30710	Install support for existing Underground Utilities	6	17-Jun-17	23-Jun-17	25-Aug-17	31-Aug-17	100%	0%	-58																							
A30720	Excavate Trench for Main Gas 100mm and install shoring	8	24-Jun-17	04-Jul-17	01-Sep-17	09-Sep-17	100%	0%	-58																							
A30730	Lay down Main Gas 100mm (by Towngas Specialist Cont	14	05-Jul-17	20-Jul-17	11-Sep-17	26-Sep-17	100%	0%	-58																							
A30740	Backfill Trench to Ground Level	4	21-Jul-17	25-Jul-17	27-Sep-17	30-Sep-17	100%	0%	-58																							
A30750	Testing and Inspection	5	26-Jul-17	31-Jul-17	03-Oct-17	09-Oct-17	60%	0%	-58																							
Gas Main M+ along Gridline 2-9/A																																
A30760	Excavate Trench for Main Gas and install shoring	12	23-Aug-17	05-Sep-17	02-Nov-17	15-Nov-17	0%	0%	-58																							
A30770	Construct and Lay down 350x350mm concrete pipe ben	12	30-Aug-17	12-Sep-17	09-Nov-17	22-Nov-17	0%	0%	-58																							
A30780	Lay down and install DN100 gas main (by Towngas Speci	28	13-Sep-17	17-Oct-17	23-Nov-17	27-Dec-17	0%	0%	-58																							
A30790	Backfill trench at M+ to adjacent level	6	18-Oct-17	24-Oct-17	28-Dec-17	04-Jan-18	0%	0%	-58																							
A30800	Testing and Inspection	4	25-Oct-17	30-Oct-17	05-Jan-18	09-Jan-18	0%	0%	-58																							
Telecom/ICT/FTNS																																
Telecom @ Gridline C-M/14																																
A30810	Completion for Construction of Power Cable Trench/Tun	0		16-Oct-17		23-Dec-17	0%	0%	-58																							
A30820	Lay 28Nos of DN100 Ducting @ A-C/14 (Approx. 100m)	5	17-Oct-17	21-Oct-17	27-Dec-17	02-Jan-18	0%	0%	-58																							
A30830	Construct 5# 28 DN100 FTNS drawpit @ gridline C-M/14	18	23-Oct-17	13-Nov-17	03-Jan-18	23-Jan-18	0%	0%	-58																							
Telecom @ Gridline A-C/14																																
A30850	Completion for Construction of Power Cable Trench/Tun	0		29-May-17		07-Aug-17	100%	0%	-58																							
A30860	Lay 28Nos of DN100 Ducting @ A-C/14 (Approx. 30m)	2	31-May-17	01-Jun-17	08-Aug-17	09-Aug-17	100%	0%	-58																							
A30870	Construct 1# 28 DN100 FTNS drawpit @ gridline A-C/14	4	02-Jun-17	06-Jun-17	10-Aug-17	14-Aug-17	100%	0%	-58																							
A30880	Notify Telecom and request installation of cables	0		06-Jun-17		14-Aug-17	100%	0%	-58																							
SPS FTNS Lead In																																
A32075	Installation of FTNS Cables (by Telecom)	8	12-Jun-17	20-Jun-17	29-Jul-17	07-Aug-17	100%	0%	-40																							
Backfilling and EVA																																
A31040	Completion of ICP Structure	0		14-Jun-17		02-Aug-17	100%	0%	-41																							
Backfilling																																
A31050	Backfilling to +6.50mPD	12	15-Jun-17	28-Jun-17	03-Aug-17	16-Aug-17	100%	0%	-41																							
A31060	Backfilling to +8.50mPD	18	29-Jun-17	20-Jul-17	17-Aug-17	06-Sep-17	100%	0%	-41																							
A31070	Backfilling to +10.50mPD	18	21-Jul-17	10-Aug-17	07-Sep-17	27-Sep-17	38.89%	0%	-41																							
A31080	Backfilling to +12.70mPD	18	11-Aug-17	31-Aug-17	28-Sep-17	20-Oct-17	0%	0%	-41																							
Fuel Tank																																
A31190	Complete GF Slab, Columns & Walls at Portion GFT6	0		07-Jul-17		28-Aug-17	100%	0%	-44																							
A31210	RSS Review & Approve Method Statement for Fuel Tank	12	23-Jun-17	07-Jul-17	09-May-17 A	11-May-17 A	100%	100%	48																							
A31220	Remove Hoarding fixed to sheetpile at Portion M04	5	08-Jul-17	13-Jul-17	28-Aug-17	02-Sep-17	100%	0%	-44																							
A31230	Install Hoarding on road-side edge of footway (500mm r	12	14-Jul-17	27-Jul-17	02-Sep-17	16-Sep-17	100%	0%	-44																							
A31240	Cut down sheet pile to underside of footway pavement	18	28-Jul-17	17-Aug-17	16-Sep-17	10-Oct-17	5.56%	0%	-44																							
A31250	Excavate to Base Slab & Wall of Fuel Tank	12	18-Aug-17	31-Aug-17	10-Oct-17	24-Oct-17	0%	0%	-44																							
A31260	Construct Bottom Level of Fuel Oil Storage Tank	12	01-Sep-17	14-Sep-17	24-Oct-17	08-Nov-17	0%	0%	-44																							



Lyric Theatre Complex

