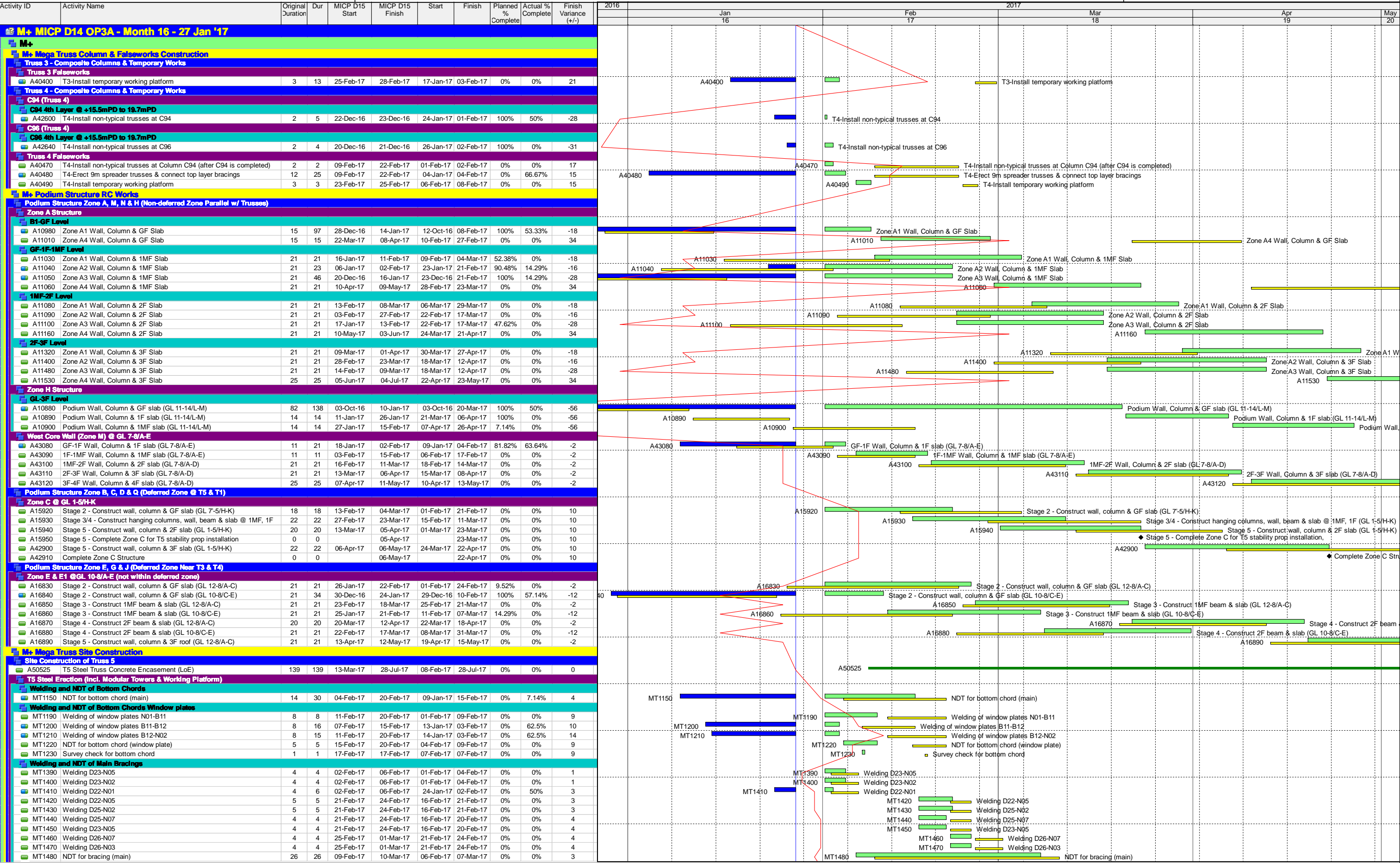
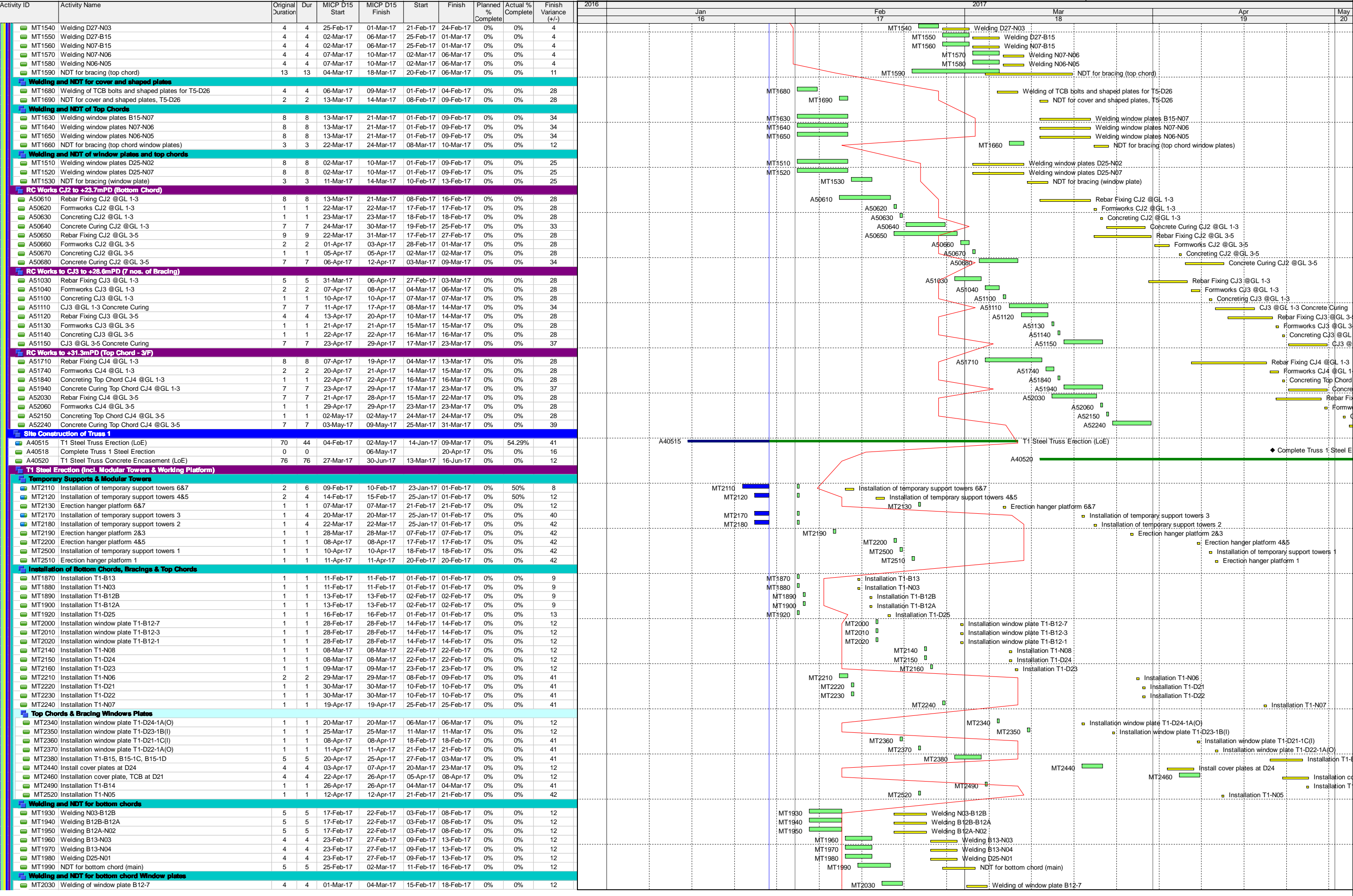


M+ Museum





Activity ID	Activity Name	Original Duration	Dur	MICP D15 Start	MICP D15 Finish	Start	Finish	Planned % Complete	Actual % Complete	Finish Variance (+/-)	2016	2017			
											Jan 16	Feb 17	Mar 18	Apr 19	May 20
MT2040	Welding of window plate B12-1	4	4	01-Mar-17	04-Mar-17	15-Feb-17	18-Feb-17	0%	0%	12					
MT2050	Welding of window plate B12-3	4	4	01-Mar-17	04-Mar-17	15-Feb-17	18-Feb-17	0%	0%	12					
Welding and NDT for bottom chord-1															
MT2070	Welding N02-B11	4	4	10-Mar-17	14-Mar-17	02-Feb-17	06-Feb-17	0%	0%	31					
MT2080	Welding B11-N01	4	4	10-Mar-17	14-Mar-17	02-Feb-17	06-Feb-17	0%	0%	31					
MT2090	NDT for bottom chord (window plate)	9	9	08-Mar-17	17-Mar-17	22-Feb-17	03-Mar-17	0%	0%	12					
MT2100	Survey check for bottom chord	1	1	15-Mar-17	15-Mar-17	07-Feb-17	07-Feb-17	0%	0%	31					
Welding and NDT for Main bracings															
MT2250	Welding D24-N04	4	4	10-Mar-17	14-Mar-17	24-Feb-17	28-Feb-17	0%	0%	12					
MT2260	Welding D23-N03	4	4	15-Mar-17	18-Mar-17	01-Mar-17	04-Mar-17	0%	0%	12					
MT2270	Welding D24-N08	5	5	10-Mar-17	15-Mar-17	24-Feb-17	01-Mar-17	0%	0%	12					
MT2280	Welding D23-N08	5	5	16-Mar-17	21-Mar-17	02-Mar-17	07-Mar-17	0%	0%	12					
MT2290	Welding D22-N06	4	4	31-Mar-17	05-Apr-17	11-Feb-17	15-Feb-17	0%	0%	41					
MT2300	Welding D22-N02	4	4	31-Mar-17	05-Apr-17	11-Feb-17	15-Feb-17	0%	0%	41					
MT2310	Welding D21-N06	5	5	31-Mar-17	06-Apr-17	11-Feb-17	16-Feb-17	0%	0%	41					
MT2320	Welding D21-N01	4	4	31-Mar-17	05-Apr-17	11-Feb-17	15-Feb-17	0%	0%	41					
MT2330	NDT for bracing (main)	20	20	18-Mar-17	11-Apr-17	04-Mar-17	27-Mar-17	0%	0%	12					
Welding and NDT for cover plates															
MT2450	Welding cover plates at D24	3	3	08-Apr-17	11-Apr-17	24-Mar-17	27-Mar-17	0%	0%	12					
MT2470	Welding cover plate at D21	4	4	27-Apr-17	02-May-17	10-Apr-17	13-Apr-17	0%	0%	12					
MT2480	NDT for cover plates	18	18	10-Apr-17	05-May-17	25-Mar-17	19-Apr-17	0%	0%	12					
Welding and NDT for Window plates-1															
MT2390	Welding of D24-1A(O)	4	4	24-Mar-17	28-Mar-17	10-Mar-17	14-Mar-17	0%	0%	12					
MT2400	Welding of D23-1B(I)	5	5	27-Mar-17	31-Mar-17	13-Mar-17	17-Mar-17	0%	0%	12					
MT2410	Welding of D22-1A(O)	4	4	12-Apr-17	19-Apr-17	22-Feb-17	25-Feb-17	0%	0%	41					
MT2420	Welding of D21-1C(I)	4	4	10-Apr-17	13-Apr-17	20-Feb-17	23-Feb-17	0%	0%	41					
MT2430	NDT for bracing (window plate)	15	15	31-Mar-17	21-Apr-17	17-Mar-17	03-Apr-17	0%	0%	12					
Welding and NDT for Top Chords															
MT2530	Welding N08-B15-1C/1D	2	2	24-Apr-17	25-Apr-17	02-Mar-17	03-Mar-17	0%	0%	41					
MT2540	Welding B15-N07	4	4	24-Apr-17	27-Apr-17	02-Mar-17	06-Mar-17	0%	0%	41					
MT2550	Welding N07-B14	4	4	24-Apr-17	27-Apr-17	02-Mar-17	06-Mar-17	0%	0%	41					
MT2560	Welding B15-B15-1C/1D	8	8	20-Apr-17	28-Apr-17	27-Feb-17	07-Mar-17	0%	0%	41					
MT2570	Welding B14-N06	4	4	27-Apr-17	02-May-17	06-Mar-17	09-Mar-17	0%	0%	41					
MT2580	Welding N06-N05	1	1	13-Apr-17	13-Apr-17	22-Feb-17	22-Feb-17	0%	0%	42					
MT2590	NDT for top chord (main)	2	2	04-May-17	05-May-17	10-Mar-17	11-Mar-17	0%	0%</						

Activity ID	Activity Name	Original Duration	Dur	MICP D15 Start	MICP D15 Finish	Start	Finish	Planned % Complete	Actual % Complete	Finish Variance (+/-)
MT2800	Installation window plate T2-B12-5	1	1	13-Mar-17	13-Mar-17	07-Mar-17	07-Mar-17	0%	0%	-5
MT2840	Installation T2-B11	1	1	14-Mar-17	14-Mar-17	08-Mar-17	08-Mar-17	0%	0%	5
MT2920	Installation T2-N08	1	1	09-Mar-17	09-Mar-17	03-Mar-17	03-Mar-17	0%	0%	5
MT2930	Installation T2-D25	1	1	09-Mar-17	09-Mar-17	03-Mar-17	03-Mar-17	0%	0%	5
MT2940	Installation T2-D24	1	1	10-Mar-17	10-Mar-17	04-Mar-17	04-Mar-17	0%	0%	5
MT2950	Installation T2-D23	1	1	10-Apr-17	10-Apr-17	03-Apr-17	03-Apr-17	0%	0%	5
MT2960	Installation T2-D26	1	1	10-Apr-17	10-Apr-17	03-Apr-17	03-Apr-17	0%	0%	5
MT2980	Installation T2-N06	1	1	22-Apr-17	22-Apr-17	13-Apr-17	13-Apr-17	0%	0%	5
MT2990	Installation T2-D21	1	1	22-Apr-17	22-Apr-17	13-Apr-17	13-Apr-17	0%	0%	5
MT3000	Installation T2-D22	1	1	24-Apr-17	24-Apr-17	18-Apr-17	18-Apr-17	0%	0%	5
MT3020	Installation T2-N07	1	1	26-Apr-17	26-Apr-17	20-Apr-17	20-Apr-17	0%	0%	5
Top Chords & Bracing Windows Plates										
MT3140	Installation T2-D25-1A(O)	1	1	20-Mar-17	20-Mar-17	14-Mar-17	14-Mar-17	0%	0%	5
MT3150	Installation T2-D24-1C(I)	1	1	25-Mar-17	25-Mar-17	20-Mar-17	20-Mar-17	0%	0%	5
MT3230	Installation of cover plate for T2-D25	3	3	05-Apr-17	07-Apr-17	29-Mar-17	31-Mar-17	0%	0%	5
MT3280	Installation T2-B15 and 4 pcs 1A,1B,1E,1F	2	2	29-Apr-17	02-May-17	24-Apr-17	25-Apr-17	0%	0%	5
Welding and NDT for Bottom chords										
MT2730	Welding N04-B13	4	4	02-Mar-17	06-Mar-17	24-Feb-17	28-Feb-17	0%	0%	5
MT2740	Welding B13-N03	4	4	02-Mar-17	06-Mar-17	24-Feb-17	28-Feb-17	0%	0%	5
MT2750	Welding N03-B12	5	5	02-Mar-17	07-Mar-17	24-Feb-17	01-Mar-17	0%	0%	5
MT2760	Welding B12-N02	4	4	02-Mar-17	06-Mar-17	24-Feb-17	28-Feb-17	0%	0%	5
MT2770	NDT for bottom chord (main)	1	1	09-Mar-17	09-Mar-17	03-Mar-17	03-Mar-17	0%	0%	5
Welding and NDT for Bottom chords window plates										
MT2810	Welding of window plate B12-4	4	4	16-Mar-17	20-Mar-17	10-Mar-17	14-Mar-17	0%	0%	5
MT2820	Welding of window plate B12-5	4	4	18-Mar-17	22-Mar-17	13-Mar-17	16-Mar-17	0%	0%	5
MT2830	Welding of window plate B12-1	4	4	21-Mar-17	24-Mar-17	15-Mar-17	18-Mar-17	0%	0%	5
Welding and NDT for Bottom chord										
MT2850	Welding N02-B11	4	4	29-Mar-17	01-Apr-17	23-Mar-17	27-Mar-17	0%	0%	5
MT2860	Welding B11-N01	5	5	28-Mar-17	01-Apr-17	22-Mar-17	27-Mar-17	0%	0%	5
MT2870	NDT for bottom chord (window plate)	12	12	23-Mar-17	06-Apr-17	17-Mar-17	30-Mar-17	0%	0%	5
MT2880	Survey check for bottom chord	1	1	03-Apr-17	03-Apr-17	28-Mar-17	28-Mar-17	0%	0%	5
Welding and NDT for Main bracings										
MT3030	Welding D25-N04	5	5	10-Mar-17	15-Mar-17	04-Mar-17	09-Mar-17	0%	0%	5
MT3040	Welding D25-N08	5	5	10-Mar-17	15-Mar-17	04-Mar-17	09-Mar-17	0%	0%	5
MT3050	Welding D24-N03	4	4	16-Mar-17	20-Mar-17	10-Mar-17	14-Mar-17	0%	0%	5
MT3060	Welding D24-N08	5	5	16-Mar-17	21-Mar-17	10-Mar-17	15-Mar-17	0%	0%	5
MT3070	Welding D23-N02	4	4	11-Apr-17	18-Apr-17	05-Apr-17	08-Apr-17	0%	0%	5
MT3080	Welding D26-N01	4	4	11-Apr-17	18-Apr-17	05-Apr-17	08-Apr-17	0%	0%	5
MT3090	Welding D21-N06	5	5	25-Apr-17	29-Apr-17	19-Apr-17	24-Apr-17	0%	0%	5
MT3100	Welding D21-N01	5	5	25-Apr-17	29-Apr-17	19-Apr-17	24-Apr-17	0%	0%	5
MT3110	Welding D22-N02	4	4	26-Apr-17	29-Apr-17	20-Apr-17	24-Apr-17	0%	0%	5
MT3120	Welding D22-N06	5	5	26-Apr-17	02-May-17	20-Apr-17	25-Apr-17	0%	0%	5
MT3130	NDT for bracing (main)	33	33	22-Mar-17	05-May-17	16-Mar-17	27-Apr-17	0%	0%	5
MT3160	Welding D25-1A(O)	4	4	22-Mar-17	25-Mar-17	16-Mar-17	20-Mar-17	0%	0%	5
MT3170	Welding D24-1C(I)	4	4	27-Mar-17	30-Mar-17	21-Mar-17	24-Mar-17	0%	0%	5
MT3240	Welding of cover for T2-D25	4	4	07-Apr-17	11-Apr-17	31-Mar-17	05-Apr-17	0%	0%	5
RC Works CJ2 to +23.7mPD (Bottom Chord)										
A47240	Rebar Fixing CJ2 @GL M-K	8	8	20-Apr-17	28-Apr-17	11-Apr-17	22-Apr-17	0%	0%	5
A47250	Formworks CJ2 @GL M-K	1	1	29-Apr-17	29-Apr-17	24-Apr-17	24-Apr-17	0%	0%	5
A47260	Concreting CJ2 @GL M-K	1	1	02-May-17	02-May-17	25-Apr-17	25-Apr-17	0%	0%	5
A47270	Concrete Curing CJ2 @GL M-K	7	7	03-May-17	09-May-17	26-Apr-17	02-May-17	0%	0%	7
A47280	Rebar Fixing CJ2 @GL K-H	9	9	29-Apr-17	11-May-17	24-Apr-17	05-May-17	0%	0%	5
Site Construction of Truss 3										
A12360	Commencement of Truss 3 Construction	0	0	01-Mar-17		04-Feb-17		0%	0%	25
A12430	Commencement of Truss 3 Steel Works Erection	0	0	20-Mar-17		23-Feb-17		0%	0%	25
A12960	T3 Steel Truss Erection (LoE)	65	65	20-Mar-17	10-Jun-17	23-Feb-17	16-May-17	0%	0%	21
A13190	T3 Steel Truss Concrete Encasement (LoE)	64	64	23-May-17	05-Aug-17	26-Apr-17	13-Jul-17	0%	0%	20
RC Works for CJ1 to +20.45mPD (Prior to Bottom Chord Erection)										
A12580	Formworks T3 Bottom 450mm CJ1 (+20.45 mPD)	6	6	01-Mar-17	07-Mar-17	04-Feb-17	10-Feb-17	0%	0%	21
A12680	Rebar Fixing T3 Bottom 450mm CJ1 (+20.45 mPD)	3	3	08-Mar-17	10-Mar-17	11-Feb-17	14-Feb-17	0%	0%	21
A12760	Concreting CJ1	1	1	11-Mar-17	11-Mar-17	15-Feb-17	15-Feb-17	0%	0%	21
A12850	Concrete curing CJ1	7	7	12-Mar-17	18-Mar-17	16-Feb-17	22-Feb-17	0%	0%	24
T3 Steel Erection (Incl. Modular Towers & Working Platform)										
Temporary Supports & Modular Towers										
MT3470	Complete Truss 3 Bottom 450mm Bedding (RC strength reach 45MPa)	0	0		18-Mar-17		22-Feb-17	0%	0%	21
MT3480	Temporary support of bottom chord	6	6	20-Mar-17	25-Mar-17	23-Feb-17	01-Mar-17	0%	0%	21
MT3760	Installation of temporary support towers (G12)	5	5	05-Apr-17	10-Apr-17	10-Mar-17	15-Mar-17	0%	0%	21
MT3790	Installation of temporary support towers (G11)	1	1	13-Apr-17	13-Apr-17	18-Mar-17	18-Mar-17	0%	0%	21
MT3820	Installation of temporary support towers (G10)	1	1	25-Apr-17	25-Apr-17	27-Mar-17	27-Mar-17	0%	0%	21
MT3880	Installation of temporary support towers (G8 & G9)	1	1	05-May-17	05-May-17	05-Apr-17	05-Apr-17	0%	0%	21
Installation of Bottom Chords, Bracings & Top Chords										
MT3490	Installation T3-B11	1	1	27-Mar-17	27-Mar-17	02-Mar-17	02-Mar-17	0%	0%	21
MT3500	Installation T3-N02	1	1	28-Mar-17	28-Mar-17	03-Mar-17	03-Mar-17	0%	0%	21
MT3510	Installation T3-B12	1	1	29-Mar-17	29-Mar-17	04-Mar-17	04-Mar-17	0%	0%	21
MT3520	Installation T3-N03	1	1	30-Mar-17	30-Mar-17	06-Mar-17	06-Mar-17	0%	0%	21
MT3530	Installation T3-B13	1	1	31-Mar-17	31-Mar-17	07-Mar-17	07-Mar-17	0%	0%	21
MT3540	Installation T3-B14	1	1	01-Apr-17	01-Apr-17	08-Mar-17	08-Mar-17	0%	0%	21
MT3550	Installation T3-N04	1	1	03-Apr-17	03-Apr-17	09-Mar-17	09-Mar-17	0%	0%	21
MT3640	Installation window plate B14-N04	1	1	18-Apr-17	18-Apr-17	20-Mar-17	20-Mar-17	0%	0%	21
MT3650	Installation window plate B13-B14	1	1	19-Apr-17	19-Apr-17	21-Mar-17	21-Mar-17	0%	0%	21
MT3660	Installation window plate N03-B13	1	1	20-Apr-17	20-Apr-17	22-Mar-17	22-Mar-17	0%	0%	21
MT3670	Installation window plate B12-N03	1	1	21-Apr-17	21-Apr-17	23-Mar-17	23-Mar-17	0%	0%	21
MT3680	Installation window plates N02-B12	1	1	22-Apr-17	22-Apr-17	24-Mar-17	24-Mar-17	0%	0%	21
MT3770	Installation T3-D27	1	1	11-Apr-17	11-Apr-17	16-Mar-17	16-Mar-17	0%	0%	21
MT3780	Installation T3-N08	1	1	12-Apr-17	12-Apr-17	17-Mar-17	17-Mar-17	0%	0%	21
MT3800	Installation T3-D26	1	1	22-Apr-17	22-Apr-17	24-Mar-17	24-Mar-17	0%	0%	21
MT3810	Installation T3-D25	1	1	24-Apr-17	24-Apr-17	25-Mar-17	25-Mar-17	0%	0%	21
MT3830	Installation T3-N07	1	1	26-Apr-17	26-Apr-17	28-Mar-17	28-Mar-17	0%	0%	21
MT3840	Installation T3-B18	1	1	28-Apr-17	28-Apr-17	30-Mar-17	30-Mar-17	0%	0%	21
MT3860	Installation T3-D23	1	1	02-May-17	02-May-17	01-Apr-17	01-Apr-17	0%	0%	21
MT3870	Installation T3-D24	1	1	04-May-17	04-May-17	03-Apr-17	03-Apr-17	0%	0%	21
MT3890	Installation T3-N06	1	1	06-May-17	06-May-17	06-Apr-17	06-Apr-17	0%	0%	21
MT3910	Installation T3-D21	1	1	09-May-17	09-May-17	08-Apr-17	08-Apr-17	0%	0%	21
MT3920	Installation T3-D22	1	1	10-May-17	10-May-17	10-Apr-17	10-Apr-17	0%	0%	21
MT3930	Installation T3-N05	1	1	11-May-17	11-May-17	11-Apr-17	11-Apr-17	0%	0%	21
Top Chords & Bracing Windows Plates										

[illegible]

Data Date: 27-Jan-17 Layout Name: MICP_3MRP_2 File Name: M+ MICP D14 OP3A - Month 16 - 27 Jan '17											Three Months Rolling Programme (3MRP) - 27 Jan 2017 (MTH16)											Page 6 of 22													
Activity ID	Activity Name	Original Duration	Dur	MICP D15 Start	MICP D15 Finish	Start	Finish	Planned % Complete	Actual % Complete	Finish Variance (+/-)																									
											2016	Jan 16				Feb 17				2017				Mar 18				Apr 19				May 20			
MT4580	Welding N05-B13	4	4	06-Apr-17	10-Apr-17	16-Mar-17	20-Mar-17	0%	0%	17																									
MT4590	Welding N04-B13	4	4	19-Apr-17	22-Apr-17	25-Mar-17	29-Mar-17	0%	0%	17																									
MT4600	Welding N04-B12	4	4	20-Apr-17	24-Apr-17	27-Mar-17	30-Mar-17	0%	0%	17																									
MT4610	Welding N03-B12	4	4	24-Apr-17	27-Apr-17	30-Mar-17	03-Apr-17	0%	0%	17																									
MT4620	Welding B11-N03	4	4	06-May-17	10-May-17	11-Apr-17	18-Apr-17	0%	0%	17																									
MT4630	Welding B11-N02	4	4	09-May-17	12-May-17	13-Apr-17	20-Apr-17	0%	0%	17																									
MT4640	NDT for bottom chord (main)	24	24	13-Apr-17	16-May-17	23-Mar-17	24-Apr-17	0%	0%	17																									
MT4650	Survey check for bottom chord	1	1	13-May-17	13-May-17	21-Apr-17	21-Apr-17	0%	0%	17																									
Welding and NDT of main Bracings and Top Chords																																			
MT4850	Welding D24-N03	4	4	12-May-17	16-May-17	20-Apr-17	24-Apr-17	0%	0%	17																									
MT4860	Welding N06-N02	5	5	17-May-17	22-May-17	25-Apr-17	29-Apr-17	0%	0%	17																									
MT4920	Welding D26-N08	5	5	13-May-17	18-May-17	21-Apr-17	26-Apr-17	0%	0%	17																									
MT5000	Welding N05-N09	4	4	11-May-17	15-May-17	19-Apr-17	22-Apr-17	0%	0%	17																									
MT5010	Welding D26-N04	4	4	16-May-17	19-May-17	24-Apr-17	27-Apr-17	0%	0%	17																									
MT5090	NDT for bracing and top chord (main)	20	20	18-May-17	10-Jun-17	26-Apr-17	20-May-17	0%	0%	17																									
Mr. Podium & Tower FACADE Preliminaries																																			
VMU DESIGN SUBMISSION																																			
VMU - L3 Storefront																																			
A51160	6th Shopdrawing Submission	18	18	17-Dec-16	03-Jan-17	28-Jan-17	14-Feb-17	100%	0%	-42																									
A51170	6th Shopdrawing Submission - Review & Approval	21	21	04-Jan-17	24-Jan-17	15-Feb-17	07-Mar-17	100%	0%	-42																									
VMU SAMPLE SUBMISSION & APPROVALS																																			
Visual Mock Up																																			
Tower Facade PC-CW-VMU																																			
A18510	Production of Terracotta for Tower VMU	48	48	17-Dec-16	17-Feb-17	01-Feb-17	28-Mar-17	68.75%	0%	-33																									
A18520	Delivery of Terracotta to precast Factory from Italy (by air) VMU 01	9	9	18-Feb-17	28-Feb-17	29-Mar-17	08-Apr-17	0%	0%	-33																									
A18530	Precast Delivery Panel Concreting	10	10	01-Mar-17	11-Mar-17	10-Apr-17	24-Apr-17	0%	0%	-33																									
A18540	Delivery of Precast to Inspection Area (in Factory)	1	1	13-Mar-17	13-Mar-17	25-Apr-17	25-Apr-17	0%	0%	-33																									
A18550	Installation of Mock Up, Inspection & Approval of VMU-Tower (in Facto	5	5	14-Mar-17	18-Mar-17	26-Apr-17	02-May-17	0%	0%	-33																									
Concrete Shell - VMU																																			
Podium Facade -VMU																																			
A18560	Production of Terracotta for Podium VMU	54	54	17-Dec-16	24-Feb-17	01-Feb-17	05-Apr-17	61.11%	0%	-33																									
A18570	Delivery of Terracotta to precast Factory from Italy (by air) VMU 02	9	9	25-Feb-17	07-Mar-17	06-Apr-17	19-Apr-17	0%	0%	-33																									
A18580	Production of Precast Panel & Delivery	32	32	08-Mar-17	18-Apr-17	20-Apr-17	29-May-17	0%	0%	-33																									
GF Ceramic Cladding, GW with Ceramic Mullion - VMU																																			
A18610	Aluminium Perforated Panel Fabrication	27	27	17-Dec-16	20-Jan-17	01-Feb-17	03-Mar-17	100%	0%	-33																									
A18620	Production of Terracotta	20	20	17-Dec-16	12-Jan-17	01-Feb-17	23-Feb-17	100%	0%	-33																									
A18630	Delivery of Terracotta to Precast Factory from Italy (by air) VMU 03	9	9	13-Jan-17	23-Jan-17	24-Feb-17	06-Mar-17	100%	0%	-33																									
A18640	Casting Ceramic Mullion	7	7	24-Jan-17	03-Feb-17	07-Mar-17	14-Mar-17	57.14%	0%	-33																									
A18650	Delivery and Installation of Ceramic Mullion & Tube Mock Up	7	7	04-Feb-17	11-Feb-17	15-Mar-17	22-Mar-17	0%	0%	-33																									
A18660	Glazing & Sealant Application	2	2	13-Feb-17	14-Feb-17	23-Mar-17	24-Mar-17	0%	0%	-33																									
A18670	Inspection & Approval of Visual Mock Up	3	3	15-Feb-17	17-Feb-17	25-Mar-17	28-Mar-17	0%	0%	-33																									
Podium Facade -VMU-1																																			
A18680	Inspection & Approval of VMU	3	3	17-Dec-16	20-Dec-16	01-Feb-17	03-Feb-17	100%	0%	-33																									
Hybrid with GW - VMU																																			
T Mullion with GW -VMU																																			
A18690	Glass Door Frame Fabrication	40	40	17-Dec-16	08-Feb-17	01-Feb-17	18-Mar-17	82.5%	0%	-33																									
A18700	Installation of Glass Door	3	3	09-Feb-17	11-Feb-17	20-Mar-17	22-Mar-17	0%	0%	-33																									
A18710	Inspection & Approval of VMU	7	7	13-Feb-17	20-Feb-17	23-Mar-17	30-Mar-17	0%	0%	-33																									
Garden Gallery -VMU																																			
A18720	Production of Terracotta	54	54	17-Dec-16	24-Feb-17	01-Feb-17	05-Apr-17	61.11%	0%	-33																									
A18730	Delivery of Terracotta to Site from Italy (by air) VMU 08	9	9	25-Feb-17	07-Mar-17	06-Apr-17	19-Apr-17	0%	0%	-33																									
A18740	Installation of Terracotta Mock Up	5	5	08-Mar-17	13-Mar-17	20-Apr-17	25-Apr-17	0%	0%	-33																									
EMBED SHOPDRAWINGS SUBMISSION																																			
EMBED - B1 Glass Wall with T Mullion																																			
A51460	4th Shopdrawing Submission	46	88	02-Nov-16	17-Dec-16	02-Nov-16	28-Jan-17	100%	97.83%	-42																									
A51470	4th Shopdrawing Submission - Review & Approval	21	21	18-Dec-16	07-Jan-17	29-Jan-17	18-Feb-17	100%	0%	-42																									
A51480	5th Shopdrawing Submission	14	14	08-Jan-17	21-Jan-17	19-Feb-17	04-Mar-17	100%	0%	-42																									
A51490	5th Shopdrawing Submission - Review & Approval	21	21	22-Jan-17	11-Feb-17	05-Mar-17	25-Mar-17	28.57%	0%	-42																									
SHOP DRAWING SUBMISSIONS FACADE SYSTEM & EMBEDS																																			
SHOP DRAWING - Tower Facade Panel																																			
A51230	Concept - 3rd Shopdrawing Submission - Review & Approval	14	14	17-Dec-16	30-Dec-16	28-Jan-17	10-Feb-17	100%	0%	-42																									
SHOP DRAWING - Podium Facade Panel																																			
A51250	Concept - 2nd Shopdrawing Submission - Review & Approval	14	14	17-Dec-16	30-Dec-16	28-Jan-17	10-Feb-17	100%	0%	-42																									
SHOP DRAWING - Glass Wall with T Mullion																																			
A51280	Concept - 2nd Shopdrawing Submission - Review & Approval	21	21	31-Dec-16	20-Jan-17	11-Feb-17	03-Mar-17	100%	0%	-42																									
SHOP DWG - Glass Wall with Ceramic/Precast Concrete Mullion,Ceramic Concrete Tube & Perforated Clada																																			
A51300	Concept - 1st Shopdrawing Submission (Embed)	24	66	07-Dec-16	30-Dec-16	07-Dec-16	10-Feb-17	100%	41.67%	-42																									
A51310	Concept - 1st Shopdrawing Submission - Review & Approval	21	21	31-Dec-16	20-Jan-17	11-Feb-17	03-Mar-17	100%	0%	-42																									
SHOP DRAWING - Strip Glazing at Skylight Gallery																																			
A51320	Concept - 2nd Shopdrawing Submission	76	118	05-Oct-16	19-Dec-16	05-Oct-16	30-Jan-17	100%	96.05%	-42																									
A51330	Concept - 2nd Shopdrawing Submission - Review & Approval	21	21	20-Dec-16	09-Jan-17	31-Jan-17	20-Feb-17	100%	0%	-42																									
SHOP DRAWING - Plaza Skylight at L3																																			
A51340	Concept - 2nd Shopdrawing Submission	83	125	28-Sep-16	19-Dec-16	28-Sep-16	30-Jan-17	100%	96.39%	-42																									
A51350	Concept - 2nd Shopdrawing Submission - Review & Approval	21	21	20-Dec-16	09-Jan-17	31-Jan-17	20-Feb-17	100%	0%	-42																									
SHOP DRAWING - L3 Storefront																																			
A51360	Concept - 3rd Shopdrawing Submission	40	82	08-Nov-16	17-Dec-16	08-Nov-16	28-Jan-17	100%	97.5%	-42																									
A51370	Concept - 3rd Shopdrawing Submission - Review & Approval	21	21	18-Dec-16	07-Jan-17	29-Jan-17	18-Feb-17	100%	0%	-42																									
SHOP DRAWING - Garden Gallery Ceramic Cladding																																			
A51380	Concept - 2nd Shopdrawing Submission	79	121	05-Oct-16	22-Dec-16	05-Oct-16	02-Feb-17	100%	92.41%	-42																									
A51390	Concept - 2nd Shopdrawing Submission - Review & Approval	21	21	23-Dec-16	12-Jan-17	03-Feb-17	23-Feb-17	100%	0%	-42																									
SHOP DRAWING - Metal Cladding FAC-LV-01a/FAC-LV-01b (Additional Scope)																																			
A51400	Concept - 1st Shopdrawing Submission	32	32	17-Dec-16	17-Jan-17	28-Jan-17	28-Feb-17	100%	0%	-42																									
A51410	Concept - 1st Shopdrawing Submission - Review & Approval	21	21	18-Jan-17	07-Feb-17	01-Mar-17	21-Mar-17	47.62%	0%	-42																									
A51420	Concept - 2nd Shopdrawing Submission	14	14	08-Feb-17	21-Feb-17	22-Mar-17	04-Apr-17	0%	0%	-42																									
A51430	Concept - 2nd Shopdrawing Submission - Review & Approval	21	21	22-Feb-17	14-Mar-17	05-Apr-17	25-Apr-17	0%	0%	-42																									
SHOP DRAWING - Tower Facade Lighting																																			
A51450	Concept - 3rd Shopdrawing Submission - Review & Approval	31	73	30-Nov-16	30-Dec-16	30-Nov-16	10-Feb-17	100%	54.84%	-42																									
SHOP DRAWING - Tower Facade Lighting, Electrical Works																																			
A39330	Concept - 1st Shopdrawing Submission - Review & Approval	49	91	12-Nov-16	30-Dec-16	12-Nov-16	10-Feb-17	100%	71.43%	-42																									
BD SUBMISSIONS FACADE SYSTEM & EMBEDS																																			
BD Submission - L3 Storefront																																			
A51520	2nd Submission	28	70	26-Nov-16	23-Dec-16	26-Nov-16	03-Feb-17	100%	75%	-42																									
A51530	2nd Submission - Review & Approval by MJV (w/ RSE Endorsement)	14	14	24-Dec-16	06-Jan-17	04-Feb-17	17-Feb-17	100%	0%	-42																									
A51540	L3 Storefront Embeds - Submission to BD	0	0		09-Jan-17		20-Feb-17	100%	0%	-33																									
A51550	L3 Storefront Embeds - BD Approval	60	60	10-Jan-17	10-Mar-17	21-Feb-17	21-Apr-17	30%	0%	-42																									
A51560	L3 Storefront Embeds - Consent	30	30	11-Mar-17	09-Apr-17	22-Apr-17	21-May-17	0%	0%	-42																									

</

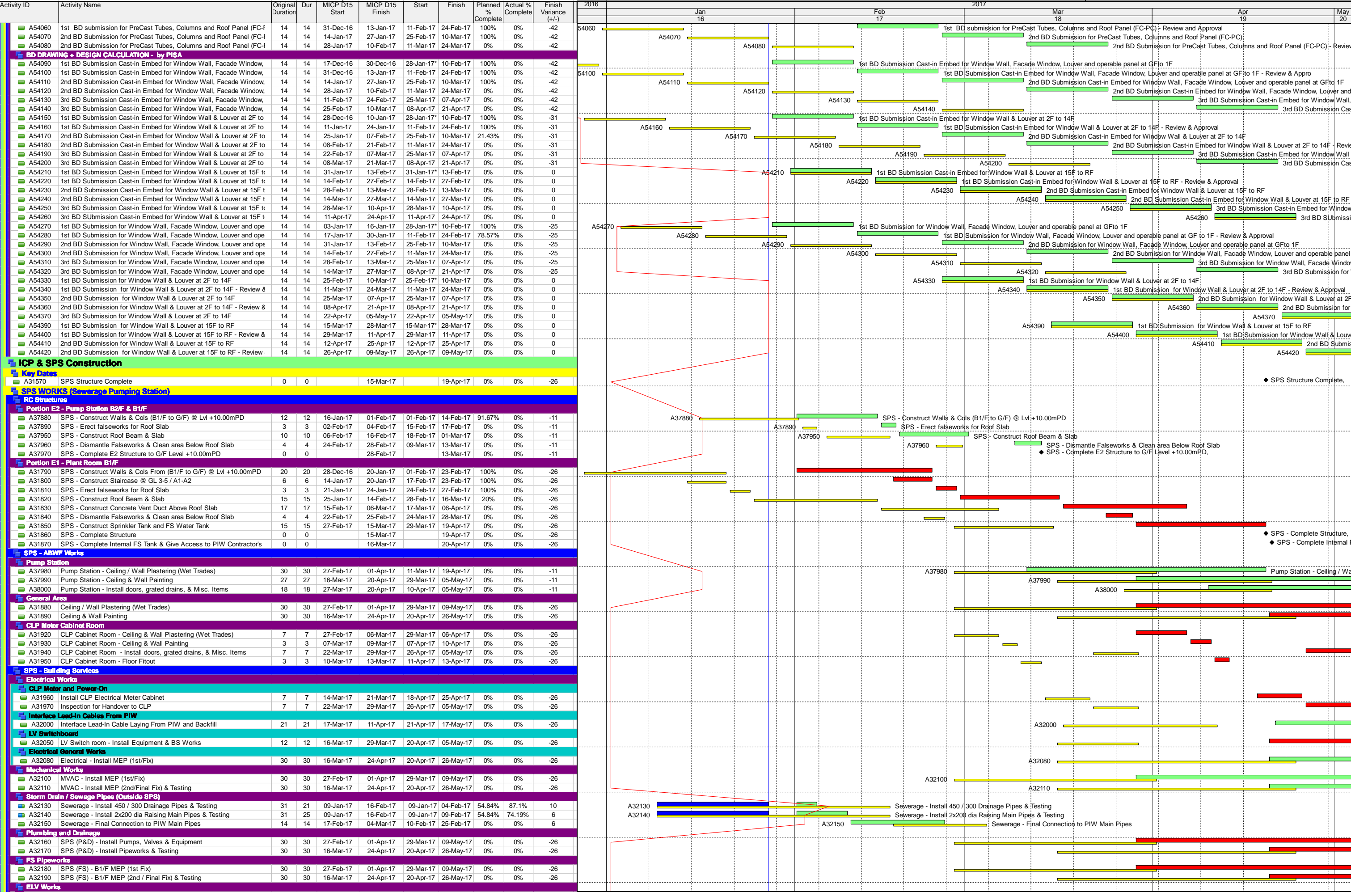
Activity ID	Activity Name	Original Duration	Dur	MICP D15 Start	MICP D15 Finish	Start	Finish	Planned % Complete	Actual % Complete	Finish Variance (+/-)	2016	Jan 16	Feb 17	2017	Mar 18	Apr 19	May 20
A52760	Perf MU - 1st Shopdrawing Submission - Review & Approval	21	21	19-Jan-17	08-Feb-17	02-Mar-17	22-Mar-17	42.86%	0%	-42							
A52770	Perf MU - 2nd Shopdrawing Submission	14	14	09-Feb-17	22-Feb-17	23-Mar-17	05-Apr-17	0%	0%	-42		A52760		A52770		Perf MU - 1st Shopdrawing Submission - Review & Approval	
A52780	Perf MU - 2nd Shopdrawing Submission - Review & Approval	21	21	23-Feb-17	15-Mar-17	06-Apr-17	26-Apr-17	0%	0%	-42						Perf MU - 2nd Shopdrawing Submission	
A54740	Perf MU - GW with Ceramic Mullion G/F Production & Fabrication	197	197	09-Feb-17	24-Aug-17	23-Mar-17	05-Oct-17	0%	0%	-42			A54740		A52780		Perf MU - 2nd Shopdrawing Submission - Review & Approval
PMU SHOPDRAWING SUBMISSION & TEST - Vertical Glass Wall at Skylight Gallery																	
A52790	Perf MU - 1st Shopdrawing Submission	12	12	17-Dec-16	28-Dec-16	28-Jan-17*	08-Feb-17	100%	0%	-42							
A52800	Perf MU - 1st Shopdrawing Submission - Review & Approval	21	21	29-Dec-16	18-Jan-17	09-Feb-17	01-Mar-17	100%	0%	-42	00						
A52810	Perf MU - 2nd Shopdrawing Submission	14	14	19-Jan-17	01-Feb-17	02-Mar-17	15-Mar-17	64.29%	0%	-42							
A52820	Perf MU - 2nd Shopdrawing Submission - Review & Approval	21	21	02-Feb-17	22-Feb-17	16-Mar-17	05-Apr-17	0%	0%	-42		A52810		A52820		Perf MU - 2nd Shopdrawing Submission	
A54820	Perf MU - Vertical Glass Wall Skylight Gallery Production & Fabrication	134	134	19-Jan-17	01-Jun-17	02-Mar-17	13-Jul-17	6.72%	0%	-42							Perf MU - 2nd Shopdrawing Submission - Review & Approval
PMU SHOPDRAWING SUBMISSION & TEST - Plaza Skylight 3/F Terrace																	
A52830	Perf MU - 1st Shopdrawing Submission	12	12	17-Dec-16	28-Dec-16	28-Jan-17*	08-Feb-17	100%	0%	-42	40						
A52840	Perf MU - 1st Shopdrawing Submission - Review & Approval	21	21	29-Dec-16	18-Jan-17	09-Feb-17	01-Mar-17	100%	0%	-42							
A52850	Perf MU - 2nd Shopdrawing Submission	14	14	19-Jan-17	01-Feb-17	02-Mar-17	15-Mar-17	64.29%	0%	-42		A52850			Perf MU - 1st Shopdrawing Submission - Review & Approval		
A52860	Perf MU - 2nd Shopdrawing Submission - Review & Approval	21	21	02-Feb-17	22-Feb-17	16-Mar-17	05-Apr-17	0%	0%	-42						Perf MU - 2nd Shopdrawing Submission	
A54780	Perf MU - Plaza Skylight 3/F Terrace Production & Fabrication	117	117	19-Jan-17	15-May-17	02-Mar-17	26-Jun-17	7.69%	0%	-42		A54780				Perf MU - 2nd Shopdrawing Submission - Review & Approval	
PMU SHOPDRAWING SUBMISSION & TEST - Acoustic Mock up																	
A52870	Perf MU - 2nd Shopdrawing Submission	12	12	17-Dec-16	28-Dec-16	28-Jan-17*	08-Feb-17	100%	0%	-42	80						
A52880	Perf MU - 2nd Shopdrawing Submission - Review & Approval	21	21	29-Dec-16	18-Jan-17	09-Feb-17	01-Mar-17	100%	0%	-42							
A52890	Perf MU - 3rd Shopdrawing Submission	14	14	19-Jan-17	01-Feb-17	02-Mar-17	15-Mar-17	64.29%	0%	-42		A52890				Perf MU - 3rd Shopdrawing Submission	
A52900	Perf MU - 3rd Shopdrawing Submission - Review & Approval	21	21	02-Feb-17	22-Feb-17	16-Mar-17	05-Apr-17	0%	0%	-42						Perf MU - 3rd Shopdrawing Submission - Review & Approval	
BIM MODEL SUBMISSION																	
BIM MODEL SUBMISSION - Tower Facade Precast Panel (MPLUS-BIM-D003)																	
A52920	5th BIM Model Submission	149	191	20-Sep-16	15-Feb-17	20-Sep-16	29-Mar-17	87.25%	59.06%	-42							
A52930	5th BIM Model Submission - Review & Approval	21	21	16-Feb-17	08-Mar-17	30-Mar-17	19-Apr-17	0%	0%	-42							
A52940	6th BIM Model Submission	14	14	09-Mar-17	22-Mar-17	20-Apr-17	03-May-17	0%	0%	-42							
BIM MODEL SUBMISSION - Podium Facade Panel (MPLUS-BIM-D004)																	
A52960	3rd BIM Model Submission	209	251	15-Jul-16	08-Feb-17	15-Jul-16	22-Mar-17	94.26%	74.16%	-42							
A52970	3rd BIM Model Submission - Review & Approval	21	21	09-Feb-17	01-Mar-17	23-Mar-17	12-Apr-17	0%	0%	-42							
A52980	4th BIM Model Submission	14	14	02-Mar-17	15-Mar-17	13-Apr-17	26-Apr-17	0%	0%	-42							
BIM MODEL SUBMISSION - Glass Wall with T Mullion																	
A53000	1st BIM Model Submission	56	98	23-Nov-16	17-Jan-17	23-Nov-16	28-Feb-17	100%	42.86%	-42							
A53010	1st BIM Model Submission - Review & Approval	21	21	18-Jan-17	07-Feb-17	01-Mar-17	21-Mar-17	47.62%	0%	-42		A53010					
A53020	2nd BIM Model Submission	14	14	08-Feb-17	21-Feb-17	22-Mar-17	04-Apr-17	0%	0%	-42							
A53030	2nd BIM Model Submission - Review & Approval	21	21	22-Feb-17	14-Mar-17	05-Apr-17	25-Apr-17	0%	0%	-42							
BIM MODEL SUBMISSION - Glass Wall with Ceramic Mullion & Precast Concrete Mullion																	
A53040	1st BIM Model Submission	46	46	17-Dec-16	31-Jan-17	28-Jan-17*	14-Mar-17	91.3%	0%	-42							
A53050	1st BIM Model Submission - Review & Approval	21	21	01-Feb-17	21-Feb-17	15-Mar-17	04-Apr-17	0%	0%	-42							
A53060	2nd BIM Model Submission	14	14	22-Feb-17	07-Mar-17	05-Apr-17	18-Apr-17	0%	0%	-42							
A53070	2nd BIM Model Submission - Review & Approval	21	21	08-Mar-17	28-Mar-17	19-Apr-17	09-May-17	0%	0%	-42							
BIM MODEL SUBMISSION - Ceramic Concrete Tubes & Perforated Cladding																	
A53080	1st BIM Model Submission	46	46	17-Dec-16	31-Jan-17	28-Jan-17*	14-Mar-17	91.3%	0%	-42							
A53090	1st BIM Model Submission - Review & Approval	21	21	01-Feb-17	21-Feb-17	15-Mar-17	04-Apr-17	0%	0%	-42							
A53100	2nd BIM Model Submission	14	14	22-Feb-17	07-Mar-17	05-Apr-17	18-Apr-17	0%	0%	-42							
A53110	2nd BIM Model Submission - Review & Approval	21	21	08-Mar-17	28-Mar-17	19-Apr-17	09-May-17	0%	0%	-42							
BIM MODEL SUBMISSION - Strip Glazing at Skylight Gallery & Plaza Skylight at L3 (MPLUS-BIM-D008) & (
A53130	3rd BIM Model Submission - Review & Approval	21	21	21-Dec-16	10-Jan-17	01-Feb-17	21-Feb-17	100%	0%	-42							
A53140	4th BIM Model Submission	14	14	11-Jan-17	24-Jan-17	22-Feb-17	07-Mar-17	100%	0%	-42		A53140					
A53150	4th BIM Model Submission - Review & Approval	21	21	25-Jan-17	14-Feb-17	08-Mar-17	28-Mar-17	14.29%	0%	-42							
BIM MODEL SUBMISSION - L3 Storefront (MPLUS-BIM-D001)																	
A53170	5th BIM Model Submission - Review & Approval	21	21	21-Dec-16	10-Jan-17	01-Feb-17	21-Feb-17	100%	0%	-42							
A53180	6th BIM Model Submission	14	14	11-Jan-17	24-Jan-17	22-Feb-17	07-Mar-17	100%	0%	-42		A53180					
A53190	6th BIM Model Submission - Review & Approval	21	21	25-Jan-17	14-Feb-17	08-Mar-17	28-Mar-17	14.29%	0%	-42							
BIM MODEL SUBMISSION - Garden Gallery Ceramic Cladding (MPLUS-BIM-D002)																	
A53200	1st BIM Model Submission	76	118	06-Oct-16	20-Dec-16	06-Oct-16	31-Jan-17	100%	94.74%	-42							
A53210	1st BIM Model Submission - Review & Approval	21	21	21-Dec-16	10-Jan-17	01-Feb-17	21-Feb-17	100%	0%	-42							
A53220	2nd BIM Model Submission	14	14	11-Jan-17	24-Jan-17	22-Feb-17	07-Mar-17	100%	0%	-42							
A53230	2nd BIM Model Submission - Review & Approval	21	21	25-Jan-17	14-Feb-17	08-Mar-17	28-Mar-17	14.29%	0%	-42							
BIM MODEL SUBMISSION - Metal Cladding FAC-LV-01a/FAC-LV-01b (Additional Scope)																	
A53250	1st BIM Model Submission	70	70	17-Dec-16	24-Feb-17	28-Jan-17*	07-Apr-17	60%	0%	-42							
A53260	1st BIM Model Submission - Review & Approval	21	21	25-Feb-17	17-Mar-17	08-Apr-17	28-Apr-17	0%	0%	-42							
FABRICATION & DELIVERY OF M+ TOWER & PODIUM FACADE SYSTEM																	
01A Tower Facade PC+CW (Bulk)																	
A54880	Production & Fabrication - Precast Panel for Tower - Summary	229	271	19-Nov-16	05-Jul-17	19-Nov-16	16-Aug-17	30.57%	12.23%	-42							
Glass Production & Fabrication																	
A54450	Coated Glass Production	108	141	19-Nov-16	31-Mar-17	19-Nov-16	16-May-17	52.78%	22.22%	-33							
A54460	Fabrication of Glass Panel	206	206	18-Feb-17	27-Oct-17	18-Feb-17	27-Oct-17	0%	0%	0							
CW Glazed Panel Production & Fabrication																	
A54900	Die Making - Bulk Production	68	101	22-Nov-16	15-Feb-17	22-Nov-16	25-Mar-17	80.88%	32.35%	-33							
A54910	Aluminium Extrusion Production	201	201	16-Feb-17	19-Oct-17	27-Mar-17	28-Nov-17	0%	0%	-33							
Terracotta Production																	
A54930	Die Making	36	69	19-Nov-16	03-Jan-17	19-Nov-16	14-Feb-17	100%	66.67%	-33							
A54940	Terracotta Production - Tower (Bulk)	222	222	04-Jan-17	03-Oct-17	15-Feb-17	13-Nov-17	9.46%	0%	-33		A54940					
A54950	Delivery to Precast Factory	212	212	10-Mar-17	24-Nov-17	22-Apr-17	05-Jan-18	0%	0%	-33							
01B Tower Lighting (Bulk)																	
Procurement & Production (3F to Roof) & Shipment																	
A55010	Procurement - Tower Lighting Bar	128	161	26-Oct-16	30-Mar-17	26-Oct-16	15-May-17	60.94%	35.16%	-33							
02 Podium Facade PC + CW (Bulk)																	
A54470	Production & Fabrication - Precast Panel for Podium	262	304	12-Nov-16	31-Jul-17	12-Nov-16	11-Sep-17	29.39%	13.36%	-42							
Glass Production & Fabrication																	
A10020	Ordering of Coated Glass	106	139	12-Nov-16	22-Mar-17	12-Nov-16	06-May-17	59.43%	28.3%	-33							
CW Glazed Panel Production & Fabrication																	
A10040	Die Making - Bulk Production	46	46	17-Feb-17	12-Apr-17	17-Feb-17	12-Apr-17	0%	0%	0							
A10050	Aluminium Extrusion Production	140	140	13-Apr-17	30-Sep-17	13-Apr-17	30-Sep-17	0%	0%	0							
Terracotta Production																	
A10080	Ordering of Terracotta - Podium (Bulk)	11	11	24-Dec-16	09-Jan-17	01-Feb-17	13-Feb-17	100%	0%	-27							
A10090	Die Making - Terracotta Production	55	55	10-Jan-17	17-Mar-17	14-Feb-17	22-Apr-17	29.09%	0%	-27		A10090					
A10100	Terracotta Production - Tower (Bulk)	165	165	16-Feb-17	05-Sep-17	20-Mar-17	09-Oct-17	0%	0%	-27							
03 GW with T Mullion (Kinked & Straight B1F to GF) (Bulk)																	
A54490	Production & Fabrication - GW with T Mullion (Kinked & Straight B1F to GF)	187	187	25-Feb-17	30-Aug-17	25-Feb-17*	30-Aug-17	0%	0%	0							
Glass Production & Fabrication																	
A10190	Coated Glass Production	94	94	25-Feb-17	22-Jun-17	25-Feb-17	22-Jun-17	0%	0%	0							
Alum Section Production & Fabrication																	
A10210	Die Making - Bulk Production	38	38	22-Apr-17	08-Jun-17	22-Apr-17	08-Jun-17	0%	0%	0							
05 Ceramic Concrete Tubes & Perforated Cladding (Bulk)																	
A54600	Production & Fabrication - Ceramic Concrete Tubes & Perforated Cladding	229	229	25-Mar-17	08-Nov-17	25-Mar-17*	08-Nov-17	0%	0%	0							

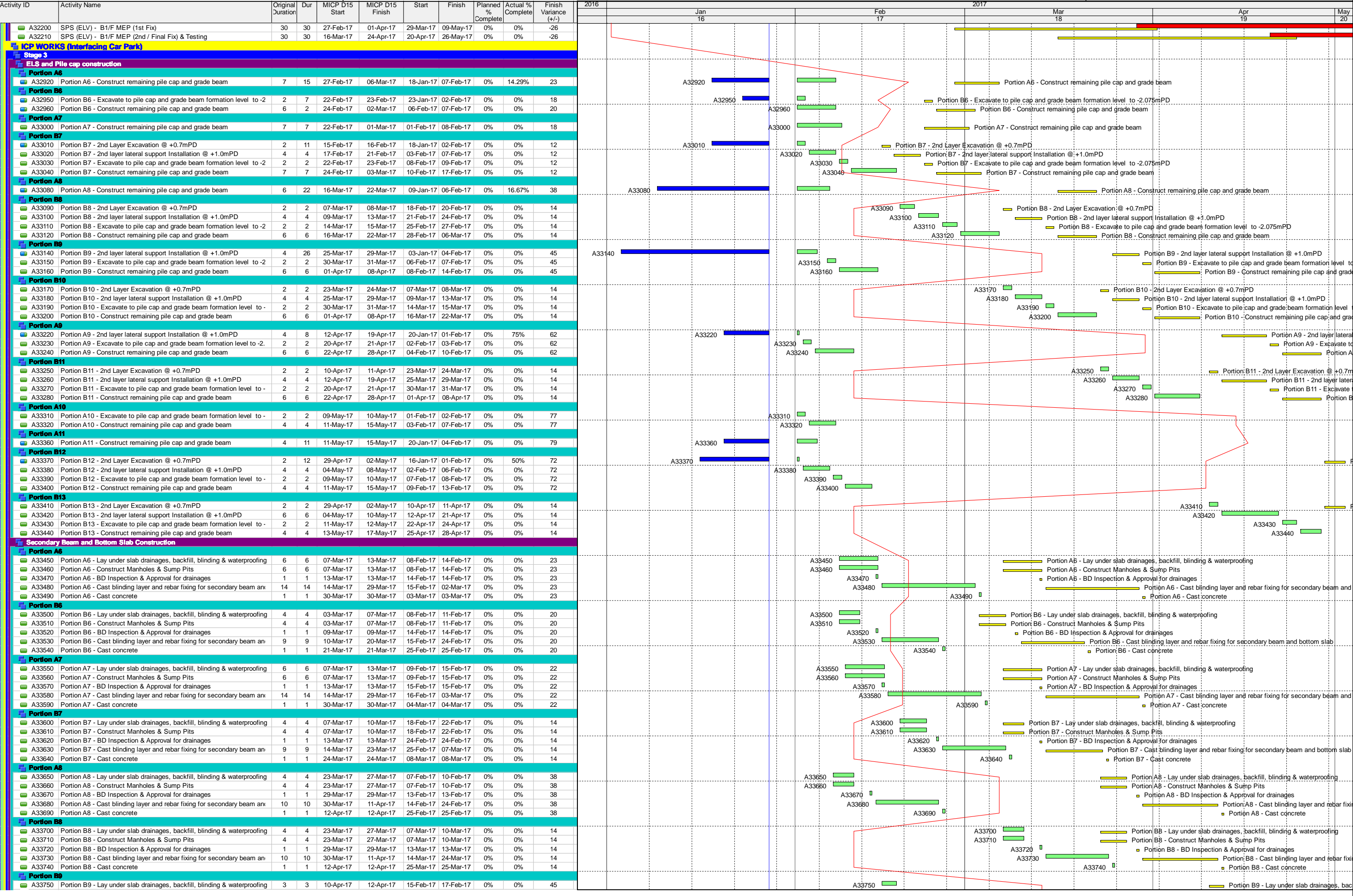
Activity ID	Activity Name	Original Duration	Dur	MICP D15 Start	MICP D15 Finish	Start	Finish	Planned % Complete	Actual % Complete	Finish Variance (+/-)	2016	2017			
											Jan 16	Feb 17	Mar 18	Apr 19	May 20
Terracotta Production															
A10680	Die Making - Bulk Production	77	77	25-Mar-17	30-Jun-17	25-Mar-17	30-Jun-17	0%	0%	0			A10680		
06A Plaza Skylight 3F (Bulk)															
A19130	Production & Fabrication - Plaza Skylight 3F	207	207	18-Mar-17	10-Oct-17	18-Mar-17	10-Oct-17	0%	0%	0			A19130		
Alum Frame Production & Fabrication															
A18770	Die Making - Bulk Production	72	72	18-Mar-17	17-Jun-17	18-Mar-17*	17-Jun-17	0%	0%	0			A18770		
06B Strip CW Skylight Gallery 3F (Bulk)															
A18810	Production & Fabrication - Strip CW Skylight Gallery 3F	151	151	17-Mar-17	14-Aug-17	17-Mar-17*	14-Aug-17	0%	0%	0			A18810		
Glass Production & Fabrication															
A19150	Coated Glass Production	68	68	17-Mar-17	12-Jun-17	17-Mar-17*	12-Jun-17	0%	0%	0			A19150		
Alum Frame Production & Fabrication															
A18830	Die Making - Bulk Production	44	44	18-Mar-17	15-May-17	18-Mar-17	15-May-17	0%	0%	0			A18830		
07 L3 Storefront (Bulk)															
A18870	Production & Fabrication - L3 Storefront	194	194	01-Apr-17	11-Oct-17	01-Apr-17	11-Oct-17	0%	0%	0			A18870		
Glass Production & Fabrication															
A19170	Coated Glass Production	97	97	01-Apr-17	01-Aug-17	01-Apr-17*	01-Aug-17	0%	0%	0			A19170		
Alum Frame Production & Fabrication															
A18890	Die Making - Bulk Production	71	71	01-Apr-17	30-Jun-17	01-Apr-17	30-Jun-17	0%	0%	0			A18890		
08 Garden Gallery Ceramic Cladding 3F (Bulk)															
A19190	Production & Fabrication - Garden Gallery Ceramic Cladding 3F	108	108	05-Apr-17	21-Jul-17	05-Apr-17	21-Jul-17	0%	0%	0				A19190	
Brackets Production & Fabrication (SS)															
A18930	Production & Fabrication	35	35	05-Apr-17	20-May-17	05-Apr-17*	20-May-17	0%	0%	0				A18930	
Terracotta Production & Fabrication															
A18950	Terracotta Production	45	45	05-Apr-17	02-Jun-17	05-Apr-17	02-Jun-17	0%	0%	0				A18950	
09 North Perimeter Louvre Cladding (Bulk)															
A19210	Production & Fabrication - North Perimeter Louvre Cladding	287	287	06-Apr-17	17-Jan-18	06-Apr-17	17-Jan-18	0%	0%	0				A19210	
Cladding & Louvre Production & Fabrication															
A18990	Die Making - Bulk Production	59	59	06-Apr-17	20-Jun-17	06-Apr-17*	20-Jun-17	0%	0%	0				A18990	
10 Doors (Bulk)															
A19230	Production & Fabrication - Doors	332	332	06-Mar-17	31-Jan-18	06-Mar-17	31-Jan-18	0%	0%	0			A19230		
Doors Production & Fabrication															
A19060	Die Making	89	89	06-Mar-17	24-Jun-17	06-Mar-17*	24-Jun-17	0%	0%	0			A19060		
M+ Podium External Envelope (By RedLand, Permasteelisa)															
B1/F to G/F Level															
(By Redland) Precast Concrete Panel															
A41140	Handover Zone A - B1/F Working Areas	0	0		16-Dec-16		27-Jan-17	100%	0%	-33					
(By Permasteelisa) Glass Wall with T Mullion															
Zone A															
A41160	Handover Zone A - B1/F Working Areas	0	0		16-Dec-16		27-Jan-17	100%	0%	-33					
3/F Roof Level															
(By Permasteelisa) Skylight/Ceramic Cladding/Storefront															
Zone M, F & N															
A47610	Handover Zone F - 3/F Working Area	0	0		16-Dec-16		27-Jan-17	100%	0%	-33					
M+ Tower External Envelope (By Permasteelisa)															
Tower Facade Advance Works															
Provision of Monorails, Catch fan & Working Platform															
A14820	Preparation & Design of Monorails	12	12	03-Apr-17	20-Apr-17	03-Apr-17*	20-Apr-17	0%	0%	0				A14820	Preparation & Design of M
A14830	Monorails - 1st Submission, Review and Approval by MJV	12	12	21-Apr-17	06-May-17	21-Apr-17	06-May-17	0%	0%	0				A14830	
Provision of Tower Crane TC6 on B1/F & 3/F Podium															
A51070	Erect TC6-1 @ Zone E on B1 Slab to 110.95 (mass level)	5	5	26-Jan-17	03-Feb-17	01-Feb-17	06-Feb-17	40%	0%	-2					
A51080	Inspection and ICE & RPE Certification	2	2	04-Feb-17	06-Feb-17	07-Feb-17	08-Feb-17	0%	0%	-2					
CSF & RDE															
Sub-Structure RC Works															
B1/F Level															
North Zoning @ Portion - R															
Portion B1R1 @ Grid Line I' to J' / 6' to 1															
A48220	Remove Scaffolds and 1st Layer of Struts	4	4	17-Jan-17	20-Jan-17	01-Feb-17	04-Feb-17	100%	0%	-10					
Portion B1R2 @ Grid Line G' to I' / 6' to 1															
A48260	Remove Scaffolds and Cleaning	3	3	19-Jan-17	21-Jan-17	01-Feb-17	03-Feb-17	100%	0%	-8					
Portion B1R5 @ Grid Line A' to A' / 3 to 4															
A10870	Remove Scaffolds and Cleaning	3	3	29-Dec-16	31-Dec-16	01-Feb-17	03-Feb-17	100%	0%	-25					
Portion B1R3 @ Grid Line A' to C' / 6' to 7'															
A48270	Construct beams & slab (B1/F) (106 m3)	16	36	28-Dec-16	16-Jan-17	28-Dec-16	11-Feb-17	100%	37.5%	-20					
A48280	Concrete Curing period (2-weeks)	17	17	17-Jan-17	02-Feb-17	12-Feb-17	28-Feb-17	64.71%	0%	-26					
A48290	Remove Scaffolds and Cleaning	3	3	03-Feb-17	06-Feb-17	01-Mar-17	03-Mar-17	0%	0%	-22					
Portion B1R4 @ Grid Line A' to A' / 6' to 7'															
A48300	Construct beams & slab (B1/F) (100 m3)	15	15	16-Jan-17	04-Feb-17	01-Feb-17	17-Feb-17	73.33%	0%	-11					
A48310	Concrete Curing period (2-weeks)	12	12	05-Feb-17	16-Feb-17	18-Feb-17	01-Mar-17	0%	0%	-13					
A48320	Remove Scaffolds and Cleaning	3	3	17-Feb-17	20-Feb-17	02-Mar-17	04-Mar-17	0%	0%	-11					
North Zoning @ Portion - S															
Portion S2 @ Grid Line A' / 6' to 2															
A48340	Construct B1 Slab on Grid (Entrance Portal Road - RC 150 m3,)	14	14	06-Feb-17	21-Feb-17	18-Feb-17	06-Mar-17	0%	0%	-11					
A48350	Concrete Curing period (2-days), remove formworks & cleaning	4	4	22-Feb-17	25-Feb-17	07-Mar-17	10-Mar-17	0%	0%	-13					
Portion S1 @ Grid Line A' / 2' to 3'															
A37930	Construct B1 Slab on Grid (CLP Cable Trench & Riser Room)	14	14	17-Dec-16	05-Jan-17	01-Feb-17	16-Feb-17	100%	0%	-33					
A37940	Concrete Curing period (2-days), remove formworks & cleaning	4	4	06-Jan-17	09-Jan-17	17-Feb-17	20-Feb-17	100%	0%	-42					
CSF Zoning @ Portion - T															
Portion B1T1 @ Grid Line D' to F' / 1' to 3'															
A48410	Concrete Curing period (2-weeks)	12	17	05-Jan-17	16-Jan-17	17-Jan-17	02-Feb-17	100%	50%	-17					
A48420	Remove scaffolds and 1st Layer of Struts	6	6	17-Jan-17	23-Jan-17	03-Feb-17	09-Feb-17	100%	0%	-12					
Portion B1T2 @ Grid Line D' to F' / 3' to 5'															
A48470	Remove scaffolds & cleaning	6	6	29-Dec-16	05-Jan-17	01-Feb-17	07-Feb-17	100%	0%	-25					
Portion B1T3 @ Grid Line D' to G' / 5' to 6'															
A48520	Remove scaffolds & cleaning	4	4	19-Dec-16	22-Dec-16	01-Feb-17	04-Feb-17	100%	0%	-32					
Portion B1T4 @ Grid Line B' to D' / 3' to 6'															
A48540	Construct beams & slab (B1/F) (230 m3)	16	21	17-Dec-16	07-Jan-17	09-Jan-17	04-Feb-17	100%	75%	-21					
A48550	Concrete Curing period (2-weeks)	12	12	08-Jan-17	19-Jan-17	05-Feb-17	16-Feb-17	100%	0%	-28					
A48560	Remove scaffolds & cleaning	4	4	20-Jan-17	24-Jan-17	17-Feb-17	21-Feb-17	100%	0%	-21					
Portion B1T5 @ Grid Line A' to B' / 4' to 6'															
A48580	Construct Columns & Walls B2 to B1/F @ GLA-B' / 4'-6'	11	11	20-Jan-17	04-Feb-17	17-Feb-17	01-Mar-17	63.64%	0%	-21					
A48590	Construct beams & slab (B1/F) (135 m3)	12	12	01-Feb-17	14-Feb-17	25-Feb-17	10-Mar-17	0%	0%	-21					
A48600	Concrete Curing period (2-weeks)	11	11	15-Feb-17	25-Feb-17	11-Mar-17	21-Mar-17	0%	0%	-24					
A48610	Remove scaffolds & cleaning	5	5	27-Feb-17	03-Mar-17	22-Mar-17	27-Mar-17	0%	0%	-20					
Portion B1T6 @ Grid Line A' to A' / 5' to 6'															
A48620	Construct Columns & Walls B2 to B1/F @ GLA-A' / 5'-6'	7	7	06-Feb-17	13-Feb-17	02-Mar-17	09-Mar-17	0%	0%	-21					
A48630	Construct beams & slab (B1/F) (135 m3)	13	13	10-Feb-17	24-Feb-17	07-Mar-17	21-Mar-17	0%	0%	-21					

Activity ID	Activity Name	Original Duration	Dur	MICP D15 Start	MICP D15 Finish	Start	Finish	Planned % Complete	Actual % Complete	Finish Variance (+/-)	2016	Jan 16	Feb 17	2017	Mar 18	Apr 19	May 20
A48640	Concrete Curing period (2-weeks)	10	10	25-Feb-17	06-Mar-17	22-Mar-17	31-Mar-17	0%	0%	-25				A48640			
A48650	Remove scaffolds & cleaning	5	5	07-Mar-17	11-Mar-17	01-Apr-17	07-Apr-17	0%	0%	-22				A48650			
RDE Zoning @ Portion - U																	
Portion B1U1 @ Grid Line R' to J' / 1' to 4'																	
A48710	Remove scaffolds and 1st Layer of Struts	6	6	10-Jan-17	16-Jan-17	01-Feb-17	07-Feb-17	100%	0%	-16		A48710					
Portion B1U2 @ Grid Line I' to J' / 4' to 6'																	
A48780	Remove Scaffolds and 1st Layer of Struts	10	10	16-Jan-17	26-Jan-17	01-Feb-17	11-Feb-17	100%	0%	-11		A48780					
Portion B1U3 @ Grid Line F' to H' / 1' to 3'																	
A48840	Remove scaffolds and 1st Layer of Struts	6	6	13-Jan-17	19-Jan-17	01-Feb-17	07-Feb-17	100%	0%	-13		A48840					
Portion B1U4 @ Grid Line F' to H' / 3' to 6'																	
A48880	Remove scaffolds & cleaning	5	5	21-Jan-17	26-Jan-17	01-Feb-17	06-Feb-17	100%	0%	-6		A48880					
LG/F Level																	
CSF Zoning @ Portion - T																	
Portion LGT2 @ Grid Line D' to F' / 3' to 5'																	
A48930	Concrete Curing period (2-weeks)	13	15	11-Jan-17	23-Jan-17	25-Jan-17	08-Feb-17	100%	7.69%	-16		A48930					
A48940	Remove scaffolds & cleaning	11	11	24-Jan-17	08-Feb-17	09-Feb-17	21-Feb-17	36.36%	0%	-11		A48940					
Portion LGT3 @ Grid Line D' to F' / 5' to 6'																	
A48980	Remove scaffolds & cleaning	6	6	18-Jan-17	24-Jan-17	01-Feb-17	07-Feb-17	100%	0%	-9		A48980					
Portion LGT4 @ Grid Line E' to D' / 3' to 5'																	
A49000	Construct Cols & Perimeter Walls B1/F to LG/F @ GL B'-D' / 3'-5'	4	4	09-Jan-17	12-Jan-17	01-Feb-17	04-Feb-17	100%	0%	-17		A49000					
A49010	Construct beams & slab (LG/F) (145 m3)	11	11	13-Jan-17	25-Jan-17	06-Feb-17	17-Feb-17	100%	0%	-17		A49010					
A49020	Concrete Curing period (2-weeks)	14	14	26-Jan-17	08-Feb-17	18-Feb-17	03-Mar-17	14.29%	0%	-23		A49020					
A49030	Remove scaffolds & cleaning	6	6	09-Feb-17	15-Feb-17	04-Mar-17	10-Mar-17	0%	0%	-20		A49030					
Portion LGT5 @ Grid Line A' to D' / 5' to 6'																	
A49040	Construct Columns & Walls B1/F to LG/F @ GLA'-D' / 5'-6'	29	29	17-Jan-17	22-Feb-17	09-Feb-17	14-Mar-17	34.48%	0%	-17		A49040					
A49050	Construct beams & slab (LG/F) (135 m3)	11	11	23-Feb-17	07-Mar-17	15-Mar-17	27-Mar-17	0%	0%	-17		A49050					
A49060	Concrete Curing period (2-weeks)	13	13	08-Mar-17	20-Mar-17	28-Mar-17	09-Apr-17	0%	0%	-20		A49060					
A49070	Remove scaffolds & cleaning	5	5	21-Mar-17	25-Mar-17	10-Apr-17	18-Apr-17	0%	0%	-16		A49070					
RDE Zoning @ Portion - U																	
Portion LGU1 @ Grid Line H' to J' / 1' to 3'																	
A49100	Construct Cols & Perimeter Walls LG/F to G/F @ GLH'-J' / 1'-3'	5	36	15-Dec-16	20-Dec-16	15-Dec-16	01-Feb-17	100%	80%	-31		A49100					
A49110	Construct beams & slab (LG/F) (164 m3)	19	17	17-Dec-16	11-Jan-17	16-Jan-17	07-Feb-17	100%	68.42%	-20		A49110					
A49120	Concrete Curing period (2-weeks)	13	13	12-Jan-17	24-Jan-17	08-Feb-17	20-Feb-17	100%	0%	-27		A49120					
A49130	Remove scaffolds & cleaning	5	5	25-Jan-17	02-Feb-17	21-Feb-17	25-Feb-17	60%	0%	-20		A49130					
Portion LGU2 @ Grid Line F' to H' / 1' to 3'																	
A49140	Construct Cols & Perimeter Walls B1/F to LG/F @ GL F'-H' / 1'-3'	6	22	03-Jan-17	09-Jan-17	04-Jan-17	01-Feb-17	100%	83.33%	-17		A49140					
A49150	Construct beams & slab (LG/F) (215 m3)	9	17	10-Jan-17	19-Jan-17	12-Jan-17	03-Feb-17	100%	66.67%	-10		A49150					
A49170	Concrete Curing period (2-weeks)	14	14	20-Jan-17	02-Feb-17	04-Feb-17	17-Feb-17	57.14%	0%	-15		A49170					
A49180	Remove scaffolds & cleaning	6	6	03-Feb-17	09-Feb-17	18-Feb-17	24-Feb-17	0%	0%	-13		A49180					
Portion LGU3 @ Grid Line F' to J' / 3' to 6'																	
A49190	Construct Lift Core Walls & Cols B1/F to LG/F @ GL F'-I / 3'-6'	9	15	09-Jan-17	18-Jan-17	13-Jan-17	02-Feb-17	100%	77.78%	-10		A49190					
A49200	Construct beams & slab (LG/F) (352 m3)	9	19	14-Jan-17	24-Jan-17	16-Jan-17	09-Feb-17	100%	11.11%	-11		A49200					
A49210	Concrete Curing period (2-weeks)	14	14	25-Jan-17	07-Feb-17	10-Feb-17	23-Feb-17	21.43%	0%	-16		A49210					
A49220	Remove scaffolds & cleaning	6	6	08-Feb-17	14-Feb-17	24-Feb-17	02-Mar-17	0%	0%	-14		A49220					
G/F Level																	
North Zoning @ Portion - R (B1/F to G/F)																	
Portion GFR1 @ Grid Line I' to J' / 5' to 1																	
A49230	Commenced RC Structure From B1/F to G/F	0	0	20-Jan-17		28-Jan-17		100%	0%	-7		A49230					
A49240	Construct Columns & Walls & Cols B1/F to G/F @ GL I'-J' / 5'-1	16	16	20-Jan-17	10-Feb-17	01-Feb-17	18-Feb-17	43.75%	0%	-7		A49240					
A49250	Construct beams & slab (G/F) (180 m3)	18	18	11-Feb-17	03-Mar-17	20-Feb-17	11-Mar-17	0%	0%	-7		A49250					
A49260	Concrete Curing period (2-weeks)	12	12	04-Mar-17	15-Mar-17	12-Mar-17	23-Mar-17	0%	0%	-8		A49260					
A49270	Remove scaffolds & cleaning	6	6	16-Mar-17	22-Mar-17	24-Mar-17	30-Mar-17	0%	0%	-7		A49270					
Portion GFR2 @ Grid Line F' to H' / 5' to 1																	
A49280	Construct Columns & Walls & Cols B1/F to G/F @ GL F'-H' / 5'-1	16	16	11-Feb-17	01-Mar-17	20-Feb-17	09-Mar-17	0%	0%	-7		A49280					
A49290	Construct beams & slab (G/F) (175 m3)	18	18	04-Mar-17	24-Mar-17	13-Mar-17	01-Apr-17	0%	0%	-7		A49290					
A49300	Concrete Curing period (2-weeks)	12	12	25-Mar-17	05-Apr-17	02-Apr-17	13-Apr-17	0%	0%	-8		A49300					
A49310	Remove scaffolds & cleaning	6	6	06-Apr-17	12-Apr-17	18-Apr-17	24-Apr-17	0%	0%	-7		A49310					
Portion GFR3 & GFR4 @ Grid Line E' to F' / 6' to 2																	
A49330	Construct Columns & Walls & Cols B1/F to G/F @ GL F'-H' / 5'-1	16	16	02-Mar-17	20-Mar-17	10-Mar-17	28-Mar-17	0%	0%	-7		A49330					
A49340	Construct beams & slab (G/F) (184 m3)	16	16	25-Mar-17	13-Apr-17	03-Apr-17	25-Apr-17	0%	0%	-7		A49340					
A49350	Concrete Curing period (2-weeks)	12	12	14-Apr-17	25-Apr-17	26-Apr-17	07-May-17	0%	0%	-12		A49350					
Portion GFR5 @ Grid Line C' to E' / 1 to 2																	
A49370	Construct Columns & Walls & Cols B1/F to G/F @ GL C'-E' / 1-2	14	14	21-Mar-17	06-Apr-17	29-Mar-17	18-Apr-17	0%	0%	-7		A49370					
A49380	Construct beams & slab (G/F) (149 m3)	14	14	18-Apr-17	05-May-17	26-Apr-17	13-May-17	0%	0%	-7		A49380					
Portion GFR6 @ Grid Line D' to E' / 6' to 1																	
A49420	Construct Columns & Walls & Cols B1/F to G/F @ GL D'-E' / 6'-1	14	14	07-Apr-17	26-Apr-17	19-Apr-17	06-May-17	0%	0%	-7		A49420					
CSF Zoning @ Portion - T (LG/F to G/F)																	
Portion GFT1 (LG/F to G/F) @ Grid Line D' to F' / 1' to 3'																	
A49780	Commenced RC Structure From B1/F to G/F	0	0	20-Jan-17		03-Feb-17		100%	0%	-12		A49780					
A49790	Construct Columns & Walls & Cols B1/F to G/F @ GL D'-F' / 1'-3'	3	3	20-Jan-17	23-Jan-17	03-Feb-17	06-Feb-17	100%	0%	-9		A49790					
A49800	Construct beams & slab (G/F) (141 m3)	25	25	24-Jan-17	24-Feb-17	07-Feb-17	07-Mar-17	16%	0%	-9		A49800					
A49810	Concrete Curing period (2-weeks)	12	12	25-Feb-17	08-Mar-17	08-Mar-17	19-Mar-17	0%	0%	-11		A49810					
A49820	Remove scaffolds & cleaning	6	6	09-Mar-17	15-Mar-17	20-Mar-17	25-Mar-17	0%	0%	-9		A49820					
A49830	Complete RDE Trx Room and Give Access to ABWF & MEP	0	0	16-Mar-17		27-Mar-17		0%	0%	-9		A49830					
Portion GFT2 (LG/F to G/F) @ Grid Line D' to F' / 3' to 5'																	
A49840	Commence RC Structure From LG/F to G/F	0	0	11-Jan-17		28-Jan-17		100%	0%	-15		A49840					
A49850	Construct CSF Lift Corewalls & Cols LG/F to G/F @ GL D'-F' / 3'-5'	7	7	11-Jan-17	18-Jan-17	01-Feb-17	08-Feb-17	100%	0%	-15		A49850					
A49860	Construct beams & slab (G/F) (260 m3)	20	20	19-Jan-17	14-Feb-17	09-Feb-17	03-Mar-17	40%	0%	-15		A49860					
A49870	Concrete Curing period (2-weeks)	13	13	15-Feb-17	27-Feb-17	04-Mar-17	16-Mar-17	0%	0%	-17		A49870					
A49880	Remove scaffolds & cleaning	5	5	28-Feb-17	04-Mar-17	17-Mar-17	22-Mar-17	0%	0%	-15		A49880					
Portion GFT3 (LG/F to G/F) @ Grid Line D' to G' / 5' to 6'																	
A49890	Construct Walls & Cols LG/F to G/F @ GL D'-G' / 5'-6'	6	6	06-Jan-17	12-Jan-17	01-Feb-17	07-Feb-17	100%	0%	-19		A49890					
A49900	Construct beams & slab (G/F) (156 m3)	9	9	13-Jan-17	23-Jan-17	08-Feb-17	17-Feb-17	100%	0%	-19		A49900					
A49910	Concrete Curing period (2-weeks)	14	14	24-Jan-17	06-Feb-17	18-Feb-17	03-Mar-17	28.57%	0%	-25		A49910					
A49920	Remove scaffolds & cleaning	5	5	07-Feb-17	11-Feb-17	04-Mar-17	09-Mar-17	0%	0%	-22		A49920					
Portion GFT4 (LG/F to G/F) @ Grid Line E' to D' / 3' to 6'																	
A49930	Construct Walls & Cols LG/F to G/F @ GL B'-D' / 3'-6'	10	10	26-Jan-17	09-Feb-17	18-Feb-17	01-Mar-17	20%	0%	-17		A49930					
A49940	Construct beams & slab (G/F) (284 m3)	12	12	10-Feb-17	23-Feb-17	02-Mar-17	15-Mar-17	0%	0%	-17		A49940					
A49950	Concrete Curing period (2-weeks)	13	13	24-Feb-17	08-Mar-17	16-Mar-17	28-Mar-17	0%	0%	-20		A49950					
A49960	Remove scaffolds & cleaning	6	6	09-Mar-17	15-Mar-17	29-Mar-17	05-Apr-17	0%	0%	-17		A49960					
A49970	Commence CSF Building From G/F to 8/F (CMWP - 24 Mar 17)	0	0	20-Feb-17		11-Mar-17		0%	0%	-17		A49970					
Portion GFT5 (B1/F to G/F) @ Grid Line A' to B' / 3' to 6'																	
A49980	Construct Walls & Cols B1/F to G/F @ GLA'-B' / 3'-6'	10	10	23-Jan-17	06-Feb-17	17-Feb-17	28-Feb-17	50%	0%	-19		A49980					
A49990	Construct beams & slab (G/F) (170 m3)	12	12	07-Feb-17	20-Feb-17	01-Mar-17	14-Mar-17	0%	0%	-19		A49990					
A50010	Concrete Curing period (2-weeks)	14	14	21-Feb-17	06-Mar-17	15-Mar-17	28-Mar-17	0%	0%	-22		A50010					
A50020	Remove scaffolds & cleaning	5	5	07-Mar-17	11-Mar-17	29-Mar-17	03-Apr-17	0%	0%	-19		A50020					

Activity ID	Activity Name	Original Duration	Dur	MICP D15 Start	MICP D15 Finish	Start	Finish	Planned % Complete	Actual % Complete	Finish Variance (+/-)	2016	Jan 16	Feb 17	2017	Mar 18	Apr 19	May 20	
Portion CFT6 (B1/F to G/F) @ Grid Line A to A' / 5' to 6'																		
A50030	Construct Walls & Cols B1/F to G/F @ GLA-A' / 5'-6'	7	7	06-Mar-17	13-Mar-17	28-Mar-17	05-Apr-17	0%	0%	-19				A50030				
A50040	Construct beams & slab (G/F) (216 m3)	18	18	14-Mar-17	03-Apr-17	06-Apr-17	29-Apr-17	0%	0%	-19				A50040				
RDE Zoning @ Portion - U (LG/F to G/F)																		
Portion GFU1 (LG/F to G/F) @ Grid Line H' to J' / 1' to 4'																		
A50070	Commence RC Structure From LG/F to G/F	0	0	12-Jan-17		08-Feb-17		100%	0%	-23								
A50090	Construct Columns & Walls LG/F to G/F @ GL H'-J' / 1'-4'	6	6	12-Jan-17	18-Jan-17	08-Feb-17	14-Feb-17	100%	0%	-20								
A50100	Construct beams & slab (G/F) (206 m3)	25	25	19-Jan-17	20-Feb-17	15-Feb-17	15-Mar-17	32%	0%	-20								
A50110	Concrete Curing period (2-weeks)	12	12	21-Feb-17	04-Mar-17	16-Mar-17	27-Mar-17	0%	0%	-23								
A50120	Remove scaffolds & cleaning	6	6	06-Mar-17	11-Mar-17	28-Mar-17	03-Apr-17	0%	0%	-19								
Portion GFU2 (LG/F to G/F) @ Grid Line I' to J' / 4' to 6'																		
A50130	Construct Columns & Walls LG/F to G/F @ GL I'-J' / 4'-6'	7	7	03-Jan-17	10-Jan-17	01-Feb-17	08-Feb-17	100%	0%	-22								
A50140	Construct beams & slab (G/F) (178 m3)-Deferred due to hoisting steel	13	13	11-Jan-17	25-Jan-17	09-Feb-17	23-Feb-17	100%	0%	-22								
A50150	Concrete Curing period (2-weeks)	12	12	26-Jan-17	06-Feb-17	24-Feb-17	07-Mar-17	16.67%	0%	-29								
A50160	Remove scaffolds & cleaning	6	6	07-Feb-17	13-Feb-17	08-Mar-17	14-Mar-17	0%	0%	-25								
Portion GFU3 (LG/F to G/F) @ Grid Line F' to I' / 1' to 3'																		
A50170	Construct Columns & Walls LG/F to G/F @ GL F'-I' / 1'-3'	5	5	20-Jan-17	25-Jan-17	15-Feb-17	20-Feb-17	100%	0%	-19								
A50180	Construct beams & slab (G/F) (269 m3)	14	14	06-Feb-17	21-Feb-17	28-Feb-17	15-Mar-17	0%	0%	-19								
A50190	Concrete Curing period (2-weeks)	12	12	22-Feb-17	05-Mar-17	16-Mar-17	27-Mar-17	0%	0%	-22								
A50200	Remove scaffolds & cleaning	6	6	06-Mar-17	11-Mar-17	28-Mar-17	03-Apr-17	0%	0%	-19								
Portion GFU4 (LG/F to G/F) @ Grid Line F' to I' / 3' to 5'																		
A50210	Construct RDE Core walls & Cols LG/F to G/F @ GL F'-I' / 3'-5'	16	16	24-Jan-17	14-Feb-17	18-Feb-17	08-Mar-17	25%	0%	-19								
A50220	Construct beams & slab (G/F) (366 m3)	14	14	13-Feb-17	28-Feb-17	07-Mar-17	22-Mar-17	0%	0%	-19								
A50230	Concrete Curing period (2-weeks)	12	12	01-Mar-17	12-Mar-17	23-Mar-17	03-Apr-17	0%	0%	-22								
A50240	Remove scaffolds & cleaning	6	6	13-Mar-17	18-Mar-17	05-Apr-17	11-Apr-17	0%	0%	-19								
A50260	Commence RDE Building From G/F to 15M/F (CMWP-20 Mar 17)	0	0	02-Mar-17		24-Mar-17		0%	0%	-19								
CSF Super-Structure RC Works																		
CSF Building																		
CSF Structure @ Portion - T (G/F to 8/F)																		
Grid Line B' to F' / 4' to 6'																		
A50700	Commence CSF Structure From G/F to 8/F	0	0	20-Feb-17		11-Mar-17		0%	0%	-17								
A50710	CSF - Walls, Columns & 1/F Slab	24	24	20-Feb-17	18-Mar-17	11-Mar-17	08-Apr-17	0%	0%	-17								
A50720	CSF - Walls, Columns & 2/F Slab	20	20	20-Mar-17	12-Apr-17	10-Apr-17	08-May-17	0%	0%	-17								
CSF Building FACADE Preliminaries																		
ENGINEERING & APPROVAL - CSF																		
SHOPDRAWING - CSF Glass Wall (All Area)																		
A19250	1st Shopdrawing Submission	14	14	17-Dec-16	30-Dec-16	28-Jan-17*	10-Feb-17	100%	0%	-42								
A19260	1st Shopdrawing Submission - Review & Approval	21	21	31-Dec-16	20-Jan-17	11-Feb-17	03-Mar-17	100%	0%	-42								
A19270	2nd Shopdrawing Submission	14	14	21-Jan-17	03-Feb-17	04-Mar-17	17-Mar-17	50%	0%	-42								
A19280	2nd Shopdrawing Submission - Review & Approval	21	21	04-Feb-17	24-Feb-17	18-Mar-17	07-Apr-17	0%	0%	-42								
SHOPDRAWING - Facade Doors Package #11 - CSF Doors - Total No. = 2																		
A19290	1st Shopdrawing Submission	96	96	17-Dec-16	22-Mar-17	28-Jan-17*	03-May-17	43.75%	0%	-42								
SHOPDRAWING - CSF Roof Louvre Wall																		
A19330	1st Shopdrawing Submission & Comment	24	24	17-Dec-16	17-Jan-17	31-Feb-17*	28-Feb-17	100%	0%	-33								
A19340	2nd Shopdrawing Submission & Comment	18	18	18-Jan-17	10-Feb-17	01-Mar-17	21-Mar-17	50%	0%	-33								
A19350	Aluminium Section Profile Approval	0	0			18-Jan-17	01-Mar-17	100%	0%	-33								
A19360	3rd Shopdrawing Submission & Comment	18	18	11-Feb-17	03-Mar-17	22-Mar-17	12-Apr-17	0%	0%	-33								
BD SUBMISSION FACADE SYSTEM & EMBEDS																		
CSF Glass Wall (All Area), Incl. CSF Louvre - FAC-LV-03 (additional Scope)																		
A19370	1st Submission	12	12	17-Dec-16	28-Dec-16	28-Jan-17*	08-Feb-17	100%	0%	-42								
A19380	1st Submission - Review & Approval by MJV	14	14	29-Dec-16	11-Jan-17	09-Feb-17	22-Feb-17	100%	0%	-42								
A19390	2nd Submission	7	7	12-Jan-17	18-Jan-17	23-Feb-17	01-Mar-17	100%	0%	-42								
A19400	2nd Submission - Review & Approval by MJV (w/ RSE Endorsement)	14	14	19-Jan-17	01-Feb-17	02-Mar-17	15-Mar-17	64.29%	0%	-42								
A19410	CSF Glass Wall (All Area) - Submission to BD	0	0			03-Mar-17	12-Apr-17	0%	0%	-33								
A19420	CSF Glass Wall (All Area) - BD Approval	60	60	04-Mar-17	02-May-17	13-Apr-17	11-Jun-17	0%	0%	-40								
PERFORMANCE TEST - SHOPDRAWING SUBMISSION, FABRICATION, INSTALLATION & TEST																		
PERFORMANCE TEST & MOCK UP - CSF																		
A19440	Shopdrawing Submission & Approval	70	70	17-Dec-16	15-Mar-17	31-Feb-17*	27-Apr-17	47.14%	0%	-33								
A19450	Ordering & Production of Material	107	107	18-Jan-17	02-Jun-17	01-Mar-17	12-Jul-17	8.41%	0%	-33								
PMU SHOPDRAWING SUBMISSION & TEST - CSF Building																		
A19480	Perf MU - 1st Shopdrawing Submission	26	26	17-Dec-16	11-Jan-17	28-Jan-17*	22-Feb-17	100%	0%	-42								
A19490	Perf MU - 1st Shopdrawing Submission - Review & Approval	21	21	12-Jan-17	01-Feb-17	23-Feb-17	15-Mar-17	76.19%	0%	-42								
A19500	Perf MU - 2nd Shopdrawing Submission	14	14	02-Feb-17	15-Feb-17	16-Mar-17	29-Mar-17	0%	0%	-42								
A19510	Perf MU - 2nd Shopdrawing Submission - Review & Approval	21	21	16-Feb-17	08-Mar-17	30-Mar-17	19-Apr-17	0%	0%	-42								
A19520	Perf MU - CSF Facade Ordering & Production	147	147	02-Feb-17	28-Jun-17	16-Mar-17	09-Aug-17	0%	0%	-42								
BIM MODEL SUBMISSION																		
BIM MODEL SUBMISSION - CSF Glass Wall (All Area)																		
A19740	1st BIM Model Submission	12	12	17-Dec-16	28-Dec-16	28-Jan-17*	08-Feb-17	100%	0%	-42								
A19750	1st BIM Model Submission - Review & Approval	21	21	29-Dec-16	18-Jan-17	09-Feb-17	01-Mar-17	100%	0%	-42								
A19760	2nd BIM Model Submission	14	14	19-Jan-17	01-Feb-17	02-Mar-17	15-Mar-17	64.29%	0%	-42								
A19770	2nd BIM Model Submission - Review & Approval	21	21	02-Feb-17	22-Feb-17	16-Mar-17	05-Apr-17	0%	0%	-42								
BIM MODEL SUBMISSION - CSF Louvre FAC-LV-03 (Additional Scope)																		
A19780	1st BIM Model Submission	12	12	17-Dec-16	28-Dec-16	28-Jan-17*	08-Feb-17	100%	0%	-42								
A19790	1st BIM Model Submission - Review & Approval	21	21	29-Dec-16	18-Jan-17	09-Feb-17	01-Mar-17	100%	0%	-42								
A19800	2nd BIM Model Submission	14	14	19-Jan-17	01-Feb-17	02-Mar-17	15-Mar-17	64.29%	0%	-42								
A19810	2nd BIM Model Submission - Review & Approval	21	21	02-Feb-17	22-Feb-17	16-Mar-17	05-Apr-17	0%	0%	-42								
Fabrication & Delivery of CSF Facade System																		
A19560	Glass Wall Production and Fabrication	221	221	15-Feb-17	11-Nov-17	15-Feb-17	11-Nov-17	0%	0%	0								
A19570	Glass Production and Fabrication	127	127	23-Mar-17	26-Aug-17	23-Mar-17	26-Aug-17	0%	0%	0								
A19580	Roof Louvre Wall Production & Fabrication	161	161	22-Apr-17	03-Nov-17	22-Apr-17	03-Nov-17	0%	0%	0								
Glass Production & Fabrication																		
A19590	Ordering of Coated Glass	68	68	23-Mar-17	17-Jun-17	23-Mar-17	17-Jun-17	0%	0%	0								
Glass Wall Production & Fabrication																		
A19610	Die Making	51	51	15-Feb-17	19-Apr-17	15-Feb-17*	19-Apr-17	0%	0%	0								
A19620	Aluminium Extrusion Production	24	24	20-Apr-17	19-May-17	20-Apr-17	19-May-17	0%	0%	0								
A19630	PVF2 Paint Ordering	51	51	23-Mar-17	27-May-17	23-Mar-17	27-May-17	0%	0%	0								
Roof Louvre Wall Production & Fabrication																		
A19680	Steel Frame Fabrication - Roof Louvre	120	120	22-Apr-17	13-Sep-17	22-Apr-17	13-Sep-17	0%	0%	0								
A19690	Die Making	60	60	22-Apr-17	05-Jul-17	22-Apr-17	05-Jul-17	0%	0%	0								
CSF External Envelope																		
CSF Structure Milestones																		
A19820	CSF - Wall, Column & G/F to 1/F Slab Complete	0	0		18-Mar-17		08-Apr-17	0%	0%	-18								
FACADE INSTALLATION - by PermaSTEEL																		
Glazed Glass Curtain Wall - South Elevation																		
A19950	Handover of Working Area (G/F)	0	0		18-Mar-17		08-Apr-17	0%	0%	-18								
A19960	Surveying of Embeds (G/F to 1/F)	7	7	20-Mar-17	27-Mar-17	10-Apr-17	17-Apr-17	0%	0%	-18								

ID	Activity Name	Original Duration	Dur	MICP D15 Start	MICP D15 Finish	Start	Finish	Planned % Complete	Actual % Complete	Finish Variance (+/-)	2016	Jan 16	Feb 17	2017	Mar 18	Apr 19	May 20
A19970	Submission of Embeds survey report (G/F to 1/F)	7	7	28-Mar-17	04-Apr-17	18-Apr-17	25-Apr-17	0%	0%	-18							
A19980	Preparation of Remedial Method (G/F to 1/F)	14	14	05-Apr-17	20-Apr-17	26-Apr-17	11-May-17	0%	0%	-18							
RDE Super-Structure RC Works																	
RDE Building																	
RDE Structure @ Portion - U (G/F to 15M/F)																	
Block A Grid Line G' to J' / 1' to 6'																	
A50830	Commence RDE Structure (Block-A) From G/F to 15M/F	0	0	02-Mar-17		24-Mar-17		0%	0%	-19							
A50840	RDE - Walls, Columns & 1/F Slab	24	24	02-Mar-17	29-Mar-17	25-Mar-17	26-Apr-17	0%	0%	-20							
RDE Building FACADE Preliminaries																	
SCHEMATIC DRAWINGS																	
SCHEMATIC DRAWING SUBMISSION - by Redland																	
A53290	1st Schematic Drawing for PreCast Tubes, Columns and Roof Panel (F	14	14	17-Dec-16	30-Dec-16	28-Jan-17*	10-Feb-17	100%	0%	-42							
A53300	1st Schematic Drawing for PreCast Tubes, Columns and Roof Panel (14	14	31-Dec-16	13-Jan-17	11-Feb-17	24-Feb-17	100%	0%	-42							
A53310	2nd Schematic Drawing for PreCast Tubes, Columns and Roof Panel (I	14	14	14-Jan-17	27-Jan-17	25-Feb-17	10-Mar-17	100%	0%	-42							
A53320	2nd Schematic Drawing for PreCast Tubes, Columns and Roof Panel (I	14	14	28-Jan-17	10-Feb-17	11-Mar-17	24-Mar-17	0%	0%	-42							
SCHEMATIC DRAWING SUBMISSION - by PISA																	
A53330	1st Schematic Drawing for Window Wall, Facade Window, Louvre and	14	14	17-Dec-16	30-Dec-16	28-Jan-17*	10-Feb-17	100%	0%	-42							
A53340	1st Schematic Drawing for Window Wall, Facade Window, Louvre and	14	14	31-Dec-16	13-Jan-17	11-Feb-17	24-Feb-17	100%	0%	-42							
A53350	2nd Schematic Drawing for Window Wall, Facade Window, Louvre and	14	14	14-Jan-17	27-Jan-17	25-Feb-17	10-Mar-17	100%	0%	-42							
A53360	2nd Schematic Drawing for Window Wall, Facade Window, Louvre and	14	14	28-Jan-17	10-Feb-17	11-Mar-17	24-Mar-17	0%	0%	-42							
A53370	1st Schematic Drawing for Window Wall & Louvre at 2F to 14F	14	14	17-Dec-16	30-Dec-16	28-Jan-17*	10-Feb-17	100%	0%	-42							
A53380	1st Schematic Drawing for Window Wall & Louvre at 2F to 14F - Revie	14	14	31-Dec-16	13-Jan-17	11-Feb-17	24-Feb-17	100%	0%	-42							
A53390	2nd Schematic Drawing for Window Wall & Louvre at 2F to 14F	14	14	14-Jan-17	27-Jan-17	25-Feb-17	10-Mar-17	100%	0%	-42							
A53400	2nd Schematic Drawing for Window Wall & Louvre at 2F to 14F - Revie	14	14	28-Jan-17	10-Feb-17	11-Mar-17	24-Mar-17	0%	0%	-42							
A53410	1st Schematic Drawing for Window Wall & Louvre at 15F to RF	14	14	17-Dec-16	30-Dec-16	28-Jan-17*	10-Feb-17	100%	0%	-42							
A53420	1st Schematic Drawing for Window Wall & Louvre at 15F to RF - Revie	14	14	31-Dec-16	13-Jan-17	11-Feb-17	24-Feb-17	100%	0%	-42							
A53430	2nd Schematic Drawing for Window Wall & Louvre at 15F to RF	14	14	14-Jan-17	27-Jan-17	25-Feb-17	10-Mar-17	100%	0%	-42							
A53440	2nd Schematic Drawing for Window Wall & Louvre at 15F to RF - Revit	14	14	28-Jan-17	10-Feb-17	11-Mar-17	24-Mar-17	0%	0%	-42							
SHOP DRAWINGS + DESIGN CALCULATION																	
SHOPDRAWING + DESIGN CALCULATION - by Redland																	
A53450	1st Shopdrawing for PreCast Tubes, Columns and Roof Panel (FC-PC)	14	14	17-Dec-16	30-Dec-16	28-Jan-17*	10-Feb-17	100%	0%	-42							
A53460	1st Shopdrawing for PreCast Tubes, Columns and Roof Panel (FC-PC)	14	14	31-Dec-16	13-Jan-17	11-Feb-17	24-Feb-17	100%	0%	-42							
A53470	2nd Shopdrawing for PreCast Tubes, Columns and Roof Panel (FC-PC)	14	14	14-Jan-17	27-Jan-17	25-Feb-17	10-Mar-17	100%	0%	-42							
A53480	2nd Shopdrawing for PreCast Tubes, Columns and Roof Panel (FC-PC)	14	14	28-Jan-17	10-Feb-17	11-Mar-17	24-Mar-17	0%	0%	-42							
A53490	3rd Shopdrawing for PreCast Tubes, Columns and Roof Panel (FC-PC)	14	14	11-Feb-17	24-Feb-17	25-Mar-17	07-Apr-17	0%	0%	-42							
A53500	3rd Shopdrawing for PreCast Tubes, Columns and Roof Panel (FC-PC)	14	14	25-Feb-17	10-Mar-17	08-Apr-17	21-Apr-17	0%	0%	-42							
SHOPDRAWING + DESIGN CALCULATION - by PISA																	
A53510	1st Shopdrawing Cast-in Embed for Window Wall, Facade Window, Lo	14	14	17-Dec-16	30-Dec-16	28-Jan-17*	10-Feb-17	100%	0%	-42							
A53520	1st Shopdrawing Cast-in Embed for Window Wall, Facade Window, Lo	14	14	31-Dec-16	13-Jan-17	11-Feb-17	24-Feb-17	100%	0%	-42							
A53530	2nd Shopdrawing Cast-in Embed for Window Wall, Facade Window, Lc	14	14	14-Jan-17	27-Jan-17	25-Feb-17	10-Mar-17	100%	0%	-42							
A53540	2nd Shopdrawing Cast-in Embed for Window Wall, Facade Window, Lc	14	14	28-Jan-17	10-Feb-17	11-Mar-17	24-Mar-17	0%	0%	-42							
A53550	3rd Shopdrawing Cast-in Embed for Window Wall, Facade Window, Lo	14	14	11-Feb-17	24-Feb-17	25-Mar-17	07-Apr-17	0%	0%	-42							
A53560	3rd Shopdrawing Cast-in Embed for Window Wall, Facade Window, Lo	14	14	25-Feb-17	10-Mar-17	08-Apr-17	21-Apr-17	0%	0%	-42							
A53570	1st Shopdrawing Cast-in Embed for Window Wall & Louver at 2F to 14F	14	14	17-Dec-16	30-Dec-16	28-Jan-17*	10-Feb-17	100%	0%	-42							
A53580	1st Shopdrawing Cast-in Embed for Window Wall & Louver at 2F to 14	14	14	31-Dec-16	13-Jan-17	11-Feb-17	24-Feb-17	100%	0%	-42							
A53590	2nd Shopdrawing Cast-in Embed for Window Wall & Louver at 2F to 14	14	14	14-Jan-17	27-Jan-17	25-Feb-17	10-Mar-17	100%	0%	-42							
A53600	2nd Shopdrawing Cast-in Embed for Window Wall & Louver at 2F to 14	14	14	28-Jan-17	10-Feb-17	11-Mar-17	24-Mar-17	0%	0%	-42							
A53610	3rd Shopdrawing Cast-in Embed for Window Wall & Louver at 2F to 14F	14	14	11-Feb-17	24-Feb-17	25-Mar-17	07-Apr-17	0%	0%	-42							
A53620	3rd Shopdrawing Cast-in Embed for Window Wall & Louver at 2F to 14	14	14	25-Feb-17	10-Mar-17	08-Apr-17	21-Apr-17	0%	0%	-42							
A53630	1st Shopdrawing Cast-in Embed for Window Wall & Louver at 15F to RF	14	14	02-Jan-17	15-Jan-17	28-Jan-17*	10-Feb-17	100%	0%	-26							
A53640	1st Shopdrawing Cast-in Embed for Window Wall & Louver at 15F to R	14	14	16-Jan-17	29-Jan-17	11-Feb-17	24-Feb-17	85.71%	0%	-26							
A53650	2nd Shopdrawing Cast-in Embed for Window Wall & Louver at 15F to F	14	14	30-Jan-17	12-Feb-17	25-Feb-17	10-Mar-17	0%	0%	-26							
A53660	2nd Shopdrawing Cast-in Embed for Window Wall & Louver at 15F to F	14	14	13-Feb-17	26-Feb-17	11-Mar-17	24-Mar-17	0%	0%	-26							
A53670	3rd Shopdrawing Cast-in Embed for Window Wall & Louver at 15F to R	14	14	27-Feb-17	12-Mar-17	25-Mar-17	07-Apr-17	0%	0%	-26							
A53680	3rd Shopdrawing Cast-in Embed for Window Wall & Louver at 15F to R	14	14	13-Mar-17	26-Mar-17	08-Apr-17	21-Apr-17	0%	0%	-26							
A53690	1st Shopdrawing for Window Wall, Facade Window, Louver and operab	14	14	17-Dec-16	30-Dec-16	28-Jan-17*	10-Feb-17	100%	0%	-42							
A53700	1st Shopdrawing for Window Wall, Facade Window, Louver and operab	14	14	31-Dec-16	13-Jan-17	11-Feb-17	24-Feb-17	100%	0%	-42							
A53710	2nd Shopdrawing for Window Wall, Facade Window, Louver and operat	14	14	14-Jan-17	27-Jan-17	25-Feb-17	10-Mar-17	100%	0%	-42							
A53720	2nd Shopdrawing for Window Wall, Facade Window, Louver and operat	14	14	28-Jan-17	10-Feb-17	11-Mar-17	24-Mar-17	0%	0%	-42							
A53730	3rd Shopdrawing for Window Wall, Facade Window, Louver and operab	14	14	11-Feb-17	24-Feb-17	25-Mar-17	07-Apr-17	0%	0%	-42							
A53740	3rd Shopdrawing for Window Wall, Facade Window, Louver and operab	14	14	25-Feb-17	10-Mar-17	08-Apr-17	21-Apr-17	0%	0%	-42							
A53750	1st Shopdrawing for Window Wall & Louver at 2F to 14F	14	14	28-Dec-16	10-Jan-17	28-Jan-17*	10-Feb-17	100%	0%	-31							
A53760	1st Shopdrawing for Window Wall & Louver at 2F to 14F - Review & A	14	14	11-Jan-17	24-Jan-17	11-Feb-17	24-Feb-17	100%	0%	-31							
A53770	2nd Shopdrawing for Window Wall & Louver at 2F to 14F	14	14	25-Jan-17	07-Feb-17	25-Feb-17	10-Mar-17	21.43%	0%	-31							
A53780	2nd Shopdrawing for Window Wall & Louver at 2F to 14F - Review & A	14	14	08-Feb-17	21-Feb-17	11-Mar-17	24-Mar-17	0%	0%	-31							
A53790	3rd																





[illegible]

Activity ID	Activity Name	Original Duration	Dur	MICP D15 Start	MICP D15 Finish	Start	Finish	Planned % Complete	Actual % Complete	Finish Variance (+/-)	2016	Jan 16	Feb 17	2017	Mar 18	Apr 19	May 20	
Portion B24 - B2 Slab (200 thk) @ Lvl -0.05mPD																		
A35850	Portion B24 - Preparation Works	1	1	04-Jul-17	04-Jul-17	01-Apr-17	01-Apr-17	0%	0%	72								
A35860	Portion B24 - Granular Fill on Top of Pilecaps & Bottom slab	3	3	05-Jul-17	07-Jul-17	03-Apr-17	06-Apr-17	0%	0%	72								
A35870	Portion B24 - Construct B2 Slab	6	6	08-Jul-17	14-Jul-17	07-Apr-17	13-Apr-17	0%	0%	72								
B2/F to B1/F ABWF and Fitout Works																		
Portion A (Phase 1)																		
A35880	ABWF Works - Internal Ceiling & Wall Plastering (Wet Trades)	40	40	21-Feb-17	08-Apr-17	01-Mar-17	20-Apr-17	0%	0%	-7								
A35890	Fitout Works - Internal Ceiling & Wall Painting	40	40	06-Apr-17	27-May-17	18-Apr-17	06-Jun-17	0%	0%	-7								
Portion B (Phase 1)																		
A36030	ABWF Works - Internal Ceiling & Wall Plastering (Wet Trades)	40	40	10-Feb-17	28-Mar-17	28-Feb-17	19-Apr-17	0%	0%	-15								
A36040	Fitout Works - Internal Ceiling & Wall Painting	40	40	25-Mar-17	17-May-17	13-Apr-17	05-Jun-17	0%	0%	-15								
B1/F to Roof ABWF and Fitout Works																		
Portion A																		
Phase 1 & 2																		
A36150	ABWF Works - Internal Ceiling & Wall Plastering (Wet Trades)	60	60	08-Mar-17	23-May-17	25-Mar-17	10-Jun-17	0%	0%	-15								
Phase 3																		
A36190	ABWF Works - Internal Ceiling & Wall Plastering (Wet Trades)	60	60	08-Mar-17	23-May-17	25-Mar-17	10-Jun-17	0%	0%	-15								
ICP - Building Services																		
B1/F Level																		
CLP Works Leading to Energization / Power-On																		
Electrical (B1/F) - Transformer Room (B128)																		
A36650	CLP Transformer - Builders Works & BS Installation	21	21	27-Jun-17	21-Jul-17	26-Apr-17*	22-May-17	0%	0%	50								
External Electrical Power and Lead-In Cable Ducts																		
A36710	Construct (4x) 2.5x2.2x1.2m Electrical Draw Pits	36	36	27-Jun-17	08-Aug-17	26-Apr-17	09-Jun-17	0%	0%	50								
External Works																		
SPS																		
SPS - G/F External Utilities & Roadworks																		
Grd Lvl - Watermain / FS Pipes Connection (Outside SPS) to PIW																		
A37210	Excavation Across Main Road From SPS Site to PIW Main pipes	45	53	29-Dec-16	23-Feb-17	09-Jan-17	14-Mar-17	55.56%	20%	-16								
A37220	Construct Trench & Valve Pit	16	16	24-Feb-17	14-Mar-17	15-Mar-17	01-Apr-17	0%	0%	-16								
A37230	Install Pipeworks and Testing	40	40	15-Mar-17	06-May-17	03-Apr-17	25-May-17	0%	0%	-16								
Grd Lvl - Storm / Drainage Connection (Outside SPS)																		
A37250	Sewerage - Construct 5x Manholes	60	60	09-Jan-17	22-Mar-17	01-Feb-17	12-Apr-17	28.33%	0%	-17								
A37260	Sewerage - Install 450 / 300 Storm Drainage Pipes & Testing	60	60	06-Feb-17	20-Apr-17	25-Feb-17	12-May-17	0%	0%	-17								
A37270	Sewerage - Install 2x200 dia Raising Main Pipes & Testing	60	60	06-Feb-17	20-Apr-17	25-Feb-17	12-May-17	0%	0%	-17								
A37280	Connect to Existing Storm Manholes & Backfill	45	45	11-Mar-17	09-May-17	31-Mar-17	29-May-17	0%	0%	-17								
ICP																		
ICP - G/F External Utilities & Roadworks																		
Grd Lvl - External Storm Drainage Connection																		
A37400	Storm drain Excavation Adjacent Main Road GL 5a-10a / Aa	36	36	23-Jun-17	04-Aug-17	22-Apr-17	06-Jun-17	0%	0%	50								
M+ ABWF, MEP and Fit-Out Works																		
RC Structure Completion & ABWF Access Dates																		
B2F-B1F Access																		
Sector C3 Access																		
A11380	Zone B1S1 - Complete B2F @ GL 2-3/A	0	0		21-Jan-17		04-Mar-17	100%	0%	-42								
A11390	Zone B1S2 - Complete B2F @ GL 1-2/A	0	0		09-Mar-17		22-Mar-17	0%	0%	-13								
Sector B1 Access																		
A11250	Zone H - Complete B2F @ GL 11-14/H-K	0	0		16-Dec-16		27-Jan-17*	100%	0%	-42								
A11260	Zone G - Complete B2F @ GL 12/G-H	0	0		16-Dec-16		27-Jan-17*	100%	0%	-42								
Sector B2 Access																		
A11280	Zone H - Complete B2F @ GL 11-14/K-M	0	0		16-Dec-16		27-Jan-17*	100%	0%	-42								
Sector F1 Access																		
A11370	Zone B1S2 - Complete B2F @ GL 5-1/A	0	0		09-Mar-17		22-Mar-17	0%	0%	-13								
A11410	Zone B1R4 - Complete B2F @ GL 6-7/A-C	0	0		06-Mar-17		18-Mar-17	0%	0%	-12								
A11420	Zone B1T6 - Complete B2F @ GL 4-6/A-C	0	0		25-Mar-17		25-Apr-17	0%	0%	-31								
Sector F2 Access																		
A11440	Zone B1T5 - Complete B2F @ GL 4-6/A-C	0	0		17-Mar-17		11-Apr-17	0%	0%	-25								
A11450	Zone B1R3 - Complete B2F @ GL 6-7/A-C	0	0		20-Feb-17		17-Mar-17	0%	0%	-25								
A11460	Zone B1T4 - Complete B2F @ GL 4-6/B-D	0	0		10-Feb-17		07-Mar-17	0%	0%	-25								
Sector F3 Access (Entrance Portal)																		
A11500	Zone B1S2 - Complete B2F @ GL 5-1/A	0	0		09-Mar-17		22-Mar-17	0%	0%	-13								
A11510	Zone B1S1 - Complete B2F @ GL 2-3/A	0	0		21-Jan-17		04-Mar-17	100%	0%	-42								
Sector F4 Access																		
A11470	Zone B1T5 - Complete B2F @ GL 3-4/A-C	0	0		17-Mar-17		11-Apr-17	0%	0%	-25								
A11490	Zone B1T4 - Complete B2F @ GL 2-5/B-D	0	0		10-Feb-17		07-Mar-17	0%	0%	-25								
Sector G1 Access																		
A11520	Zone B1T3 - Complete B2F @ GL 5-6/D-G	0	0		25-Mar-17		25-Apr-17	0%	0%	-31								
A11540	Zone B1R2 - Complete B2F @ GL 6-1/G-H	0	0		08-Feb-17		17-Feb-17	0%	0%	-9								
A11550	Zone B1U4 - Complete B2F @ GL 4-6/F-H	0	0		13-Feb-17		20-Feb-17	0%	0%	-7								
A11560	Zone A - Complete B2F @ GL 1-6/C-F	0	0		27-Jan-17		27-Jan-17	100%	0%	0								
A11570	Zone B1T2 - Complete B2F @ GL 4-5/D-F	0	0		19-Jan-17		21-Feb-17	100%	0%	-33								
Sector G2 Access																		
A11670	Zone B1R1 - Complete B2F @ GL 6-1/I-J	0	0		07-Feb-17		18-Feb-17	0%	0%	-11								
A11680	Zone B1U2 - Complete B2F @ GL 4-6/I-J	0	0		13-Feb-17		25-Feb-17	0%	0%	-12								
A11690	Zone B1R2 - Complete B2F @ GL 6-1/G-H	0	0		08-Feb-17		17-Feb-17	0%	0%	-9								
A11700	Zone B1U4 - Complete B2F @ GL 4-6/H-I	0	0		13-Feb-17		20-Feb-17	0%	0%	-7								
Sector G3 Access																		
A11580	Zone B1T1 - Complete B2F @ GL 1-3/D-F	0	0		09-Feb-17		23-Feb-17	0%	0%	-14								
A11590	Zone B1T2 - Complete B2F @ GL 3-5/D-F	0	0		19-Jan-17		21-Feb-17	100%	0%	-33								
A11600	Zone B1U3 - Complete B2F @ GL 1-3/F-H	0	0		06-Feb-17		21-Feb-17	0%	0%	-15								
A11610	Zone B1U4 - Complete B2F @ GL 3-5/F-H	0	0		13-Feb-17		20-Feb-17	0%	0%	-7								
Sector G4 Access																		
A11630	Zone B1U1 - Complete B2F @ GL 1-4/H-J	0	0		02-Feb-17		21-Feb-17	0%	0%	-19								
A11640	Zone B1U2 - Complete B2F @ GL 4/I-J	0	0		13-Feb-17		25-Feb-17	0%	0%	-12								
A11650	Zone B1U3 - Complete B2F @ GL 1-3/H-J	0	0		06-Feb-17		21-Feb-17	0%	0%	-15								
A11660	Zone B1U4 - Complete B2F @ GL 3-5/H-J	0	0		13-Feb-17		20-Feb-17	0%	0%	-7								
B1F-GF Access																		
Sector C1 Access																		
A11940	Zone E - Complete B1F @ GL 8-9/A-C	0	0		10-Feb-17		24-Feb-17	0%	0%	-14								
A12390	Zone A2 - Complete B1F @ GL 4-6/A-C	0	0		19-Jan-17		27-Jan-17	100%	0%	-8								
Sector C2 Access																		
A11950	Zone A2 - Complete B1F @ GL 4-5/C-E	0	0		19-Jan-17		27-Jan-17	100%	0%	-8								
A11960	Zone M - Complete B1F @ GL 7-8/C-D	0	0		03-Feb-17		27-Jan-17	0%	0%	7								
A12400	Zone A3 - Complete B1F @ GL 5-7/C-E	0	0		05-Jan-17		27-Jan-17	100%	0%	-22								
Sector C3 Access																		
A11990	Zone A1 - Complete B1F @ GL 2-4/A-C	0	0		01-Feb-17		22-Feb-17	0%	0%	-21								

ID	Activity Name	Original Duration	Dur	MICP D15 Start	MICP D15 Finish	Start	Finish	Planned % Complete	Actual % Complete	Finish Variance (+/-)	2016	Jan 16	Feb 17	2017	Mar 18	Apr 19	May 20
A12420	Zone A2 - Complete B1F @ GL 4-5/A-C	0	0		19-Jan-17		27-Jan-17	100%	0%	-8			◆ Zone A2 - Complete B1F @ GL 4-5/A-C,				
Sector C4 Access														◆ Zone A4 - Complete B1F @ GL 2-4/E-H,			
A12010	Zone A4 - Complete B1F @ GL 2-4/E-H	0	0		26-Apr-17		13-Mar-17	0%	0%	44							
A12460	Zone A1 - Complete B1F @ GL 2-4/C-E	0	0		01-Feb-17		22-Feb-17	0%	0%	-21							
A12470	Zone A2 - Complete B1F @ GL 4-5/C-E	0	0		19-Jan-17		27-Jan-17	100%	0%	-8			◆ Zone A2 - Complete B1F @ GL 4-5/C-E,	◆ Zone A1 - Complete B1F @ GL 2-4/C-E,	◆ Zone A4 - Complete B1F @ GL 2-4/E-H,		
Sector A3 Access														◆ Zone E - Complete B1F @ GL 8-11/A-C,			
A12020	Zone E - Complete B1F @ GL 8-11/A-C	0	0		10-Feb-17		24-Feb-17	0%	0%	-14							
Sector B2 Access																◆ Zone H - Complete B1F @ GL 11-14/K-M,	
A12080	Zone H - Complete B1F @ GL 11-14/K-M	0	0		24-Jan-17		03-Apr-17	100%	0%	-69							
Sector D3 Access																	
A12110	Zone A4 - Complete B1F @ GL 2-4/F-H	0	0		26-Apr-17		13-Mar-17	0%	0%	44					◆ Zone A4 - Complete B1F @ GL 2-4/F-H,		
Sector F2 Access																	
A12170	Zone GFT5 - Complete B1F @ GL 4'-6/A'-B'	0	0		25-Mar-17		21-Apr-17	0%	0%	-27							◆ Zone GFT5 - Complete
A12190	Zone GFT4 - Complete B1F @ GL 4'-6/B'-D'	0	0		04-Mar-17		24-Mar-17	0%	0%	-20						◆ Zone GFT4 - Complete B1F @ GL 4'-6/B'-D',	
Sector F4 Access																	
A12220	Zone GFT5 - Complete B1F @ GL 3'-5/A'-B'	0	0		25-Mar-17		21-Apr-17	0%	0%	-27							◆ Zone GFT5 - Complete
A12230	Zone GFT4 - Complete B1F @ GL 2'-6/B'-D'	0	0		29-Mar-17		22-Apr-17	0%	0%	-24							◆ Zone GFT4 - Complete
Sector G1 Access																	
A12240	Zone GFT3 - Complete B1F @ GL 5'-6/D'-G'	0	0		25-Feb-17		23-Mar-17	0%	0%	-26						◆ Zone GFT3 - Complete B1F @ GL 5'-6/D'-G',	
A12250	Zone GFT2 - Complete B1F @ GL 4'-5/D'-F'	0	0		18-Mar-17		06-Apr-17	0%	0%	-19						◆ Zone GFT2 - Complete B1F @ GL 4'-5/D'-F',	
Sector G2 Access																	
A12280	Zone GFU2 - Complete B1F @ GL 4'-6/I'-J'	0	0		27-Feb-17		28-Mar-17	0%	0%	-29						◆ Zone GFU2 - Complete B1F @ GL 4'-6/I'-J',	
A12300	Zone GFR1 - Complete B1F @ GL 5'-1/I'-J'	0	0		06-Apr-17		18-Apr-17	0%	0%	-12						◆ Zone GFR1 - Complete B1F @	
Sector G3 Access																	
A12320	Zone GFT1 - Complete B1F @ GL 1'-3/D'-F'	0	0		29-Mar-17		10-Apr-17	0%	0%	-12							◆ Zone GFT1 - Complete B1F @ GL 1'-3/D'-F',
A12330	Zone GFT2 - Complete B1F @ GL 3'-5/D'-F'	0	0		18-Mar-17		06-Apr-17	0%	0%	-19						◆ Zone GFT2 - Complete B1F @ GL 3'-5/D'-F',	
A12340	Zone GFU3 - Complete B1F @ GL 1'-3/F'-H'	0	0		25-Mar-17		21-Apr-17	0%	0%	-27							◆ Zone GFU3 - Complete
Sector G4 Access																	
A12370	Zone GFU1 - Complete B1F @ GL 1'-4/H'-J'	0	0		25-Mar-17		21-Apr-17	0%	0%	-27							◆ Zone GFU1 - Complete
A12380	Zone GFU2 - Complete B1F @ GL 4/I'-J'	0	0		27-Feb-17		28-Mar-17	0%	0%	-29						◆ Zone GFU2 - Complete B1F @ GL 4/I'-J',	
A12700	Zone GFU3 - Complete B1F @ GL 1'-3/F'-H'	0	0		25-Mar-17		21-Apr-17	0%	0%	-27							◆ Zone GFU3 - Complete
GF-1F Access																	
Sector C1 Access																	
A12720	Zone M - Complete GF @ GL 7-8/A-C	0	0		16-Feb-17		18-Feb-17	0%	0%	-2				◆ Zone M - Complete GF @ GL 7-8/A-C,			
A12730	Zone A2 - Complete GF @ GL 4-6/A-C	0	0		16-Feb-17		07-Mar-17	0%	0%	-19				◆ Zone A2 - Complete GF @ GL 4-6/A-C,			
A12740	Zone A3 - Complete GF @ GL 5-7/A-C	0	0		02-Feb-17		07-Mar-17	0%	0%	-33				◆ Zone A3 - Complete GF @ GL 5-7/A-C,			
A12750	Zone E - Complete GF @ GL 8-9/A-C	0	0		07-Mar-17		21-Mar-17	0%	0%	-14					◆ Zone E - Complete GF @ GL 8-9/A-C,		
Sector C2 Access																	
A12770	Zone M - Complete GF @ GL 7-8/C-D	0	0		16-Feb-17		18-Feb-17	0%	0%	-2				◆ Zone M - Complete GF @ GL 7-8/C-D,			
A12780	Zone A2 - Complete GF @ GL 4-5/C-E	0	0		16-Feb-17		07-Mar-17	0%	0%	-19				◆ Zone A2 - Complete GF @ GL 4-5/C-E,			
A12790	Zone A3 - Complete GF @ GL 5-7/C-E	0	0		02-Feb-17		07-Mar-17	0%	0%	-33				◆ Zone A3 - Complete GF @ GL 5-7/C-E,			
Sector C3 Access																	
A12830	Zone A1 - Complete GF @ GL 2-4/A-C	0	0		25-Feb-17		18-Mar-17	0%	0%	-21					◆ Zone A1 - Complete GF @ GL 2-4/A-C,		
A12840	Zone A2 - Complete GF @ GL 4-5/A-C	0	0		16-Feb-17		07-Mar-17	0%	0%	-19				◆ Zone A2 - Complete GF @ GL 4-5/A-C,			
Sector C4 Access																	
A12860	Zone A1 - Complete GF @ GL 2-4/C-E	0	0		25-Feb-17		18-Mar-17	0%	0%	-21					◆ Zone A1 - Complete GF @ GL 2-4/C-E,		
A12870	Zone A2 - Complete GF @ GL 4-5/C-E	0	0		16-Feb-17		07-Mar-17	0%	0%	-19				◆ Zone A2 - Complete GF @ GL 4-5/C-E,			
A12880	Zone A4 - Complete GF @ GL 2-4/E-H	0	0		23-May-17		07-Apr-17	0%	0%	46						◆ Zone A4 - Complete GF @ GL 2-4/E-H,	
Sector A3 Access																	
A12920	Zone E - Complete GF @ GL 8-11/A-C	0	0		07-Mar-17		21-Mar-17	0%	0%	-14					◆ Zone E - Complete GF @ GL 8-11/A-C,		
Sector B2 Access																	◆ Zone H - Complet
A13010	Zone H - Complete GF @ GL 11-14/K-M	0	0		13-Feb-17		24-Apr-17	0%	0%	-70							
Sector D3 Access																	
A13140	Zone A4 - Complete GF @ GL 2-4/F-H	0	0		23-May-17		07-Apr-17	0%	0%	46						◆ Zone A4 - Complete GF @ GL 2-4/F-H,	
1F-1MF Access																	
Sector C1 Access																	
A13290	Zone M - Complete 1F @ GL 7-8/A-C	0	0		01-Mar-17		03-Mar-17	0%	0%	-2				◆ Zone M - Complete 1F @ GL 7-8/A-C,			
A13300	Zone A2 - Complete 1F @ GL 4-6/A-C	0	0		16-Feb-17		07-Mar-17	0%	0%	-19				◆ Zone A2 - Complete 1F @ GL 4-6/A-C,			
A13310	Zone A3 - Complete 1F @ GL 5-7/A-C	0	0		02-Feb-17		07-Mar-17	0%	0%	-33				◆ Zone A3 - Complete 1F @ GL 5-7/A-C,			
Sector C2 Access																	
A13340	Zone M - Complete 1F @ GL 7-8/C-D	0	0		01-Mar-17		03-Mar-17	0%	0%	-2				◆ Zone M - Complete 1F @ GL 7-8/C-D,			
A13350	Zone A2 - Complete 1F @ GL 4-5/C-E	0	0		16-Feb-17		07-Mar-17	0%	0%	-19				◆ Zone A2 - Complete 1F @ GL 4-5/C-E,			
A13360	Zone A3 - Complete 1F @ GL 5-7/C-E	0	0		02-Feb-17		07-Mar-17	0%	0%	-33				◆ Zone A3 - Complete 1F @ GL 5-7/C-E,			
Sector C3 Access																	
A13410	Zone A1 - Complete 1F @ GL 2-4/A-C	0	0		25-Feb-17		18-Mar-17	0%	0%	-21					◆ Zone A1 - Complete 1F @ GL 2-4/A-C,		
A13420	Zone A2 - Complete 1F @ GL 4-5/A-C	0	0		16-Feb-17		07-Mar-17	0%	0%	-19				◆ Zone A2 - Complete 1F @ GL 4-5/A-C,			
Sector C4 Access																	
A13440	Zone A1 - Complete 1F @ GL 2-4/C-E	0	0		25-Feb-17		18-Mar-17	0%	0%	-21					◆ Zone A1 - Complete 1F @ GL 2-4/C-E,		
A13450	Zone A2 - Complete 1F @ GL 4-5/C-E	0	0		16-Feb-17		07-Mar-17	0%	0%	-19				◆ Zone A2 - Complete 1F @ GL 4-5/C-E,			
A13460	Zone A4 - Complete 1F @ GL 2-4/E-H	0	0		23-May-17		07-Apr-17	0%	0%	46						◆ Zone A4 - Complete 1F @ GL 2-4/E-H,	
Sector D3 Access																	
A13720	Zone A4 - Complete 1F @ GL 2-4/F-H	0	0		23-May-17		07-Apr-17	0%	0%	46						◆ Zone A4 - Complete 1F @ GL 2-4/F-H,	
1MF-2F Access																	
Sector C1 Access																	
A13800	Zone M - Complete 1MF @ GL 7-8/A-C	0	0		25-Mar-17		28-Mar-17	0%	0%	-3						◆ Zone M - Complete 1MF @ GL 7-8/A-C,	
A13810	Zone A2 - Complete 1MF @ GL 4-6/A-C	0	0		13-Mar-17		31-Mar-17	0%	0%	-18				◆ Zone A2 - Complete 1MF @ GL 4-6/A-C,			
A13830	Zone A3 - Complete 1MF @ GL 5-7/A-C	0	0		27-Feb-17		31-Mar-17	0%	0%	-32				◆ Zone A3 - Complete 1MF @ GL 5-7/A-C,			
A13840	Zone E - Complete 1MF @ GL 8-9/A-C	0	0		31-Mar-17		19-Apr-17	0%	0%	-19						◆ Zone E - Complete 1MF @	
Sector C2 Access																	
A13850	Zone M - Complete 1MF @ GL 7-8/C-D	0	0		25-Mar-17		28-Mar-17	0%	0%	-3						◆ Zone M - Complete 1MF @ GL 7-8/C-D,	
A13860	Zone A2 - Complete 1MF @ GL 4-5/C-E	0	0		13-Mar-17		31-Mar-17	0%	0%	-18				◆ Zone A2 - Complete 1MF @ GL 4-5/C-E,			
A13870	Zone A3 - Complete 1MF @ GL 5-7/C-E	0	0		27-Feb-17		31-Mar-17	0%	0%	-32				◆ Zone A3 - Complete 1MF @ GL 5-7/C-E,			
Sector C3 Access																	
A13930	Zone A1 - Complete 1MF @ GL 2-4/A-C	0	0		22-Mar-17		13-Apr-17	0%	0%	-22					◆ Zone A1 - Complete 1MF @ GL 2-4/A-C,		
A13940	Zone A2 - Complete 1MF @ GL 4-5/A-C	0	0		13-Mar-17		31-Mar-17	0%	0%	-18				◆ Zone A2 - Complete 1MF @ GL 4-5/A-C,			
Sector C4 Access																	
A13950	Zone A1 - Complete 1MF @ GL 2-4/C-E	0	0		22-Mar-17		13-Apr-17	0%	0%	-22					◆ Zone A1 - Complete 1MF @ GL 2-4/C-E,		
A13960	Zone A2 - Complete 1																

Activity ID	Activity Name	Original Duration	Dur	MICP D15 Start	MICP D15 Finish	Start	Finish	Planned % Complete	Actual % Complete	Finish Variance (+/-)	2016	Jan 16	Feb 17	2017	Mar 18	Apr 19	May 20
A20260	Instruction issuance - commencement of works for M+ Podium ABWF	0	0	17-Dec-16		29-Jan-17*		100%	0%	-39				◆ Instruction issuance - commencement of works for M+ Podium ABWF & Fit-out work; 29-Jan-17*			
Pre-construction Works																	
A20290	Shop drawings Submission & Approval	210	249	02-Oct-16	12-May-17	02-Oct-16	21-Jun-17	54.29%	35.71%	-39							
A20300	Method Statement & ITP Submission & Approval	210	249	02-Oct-16	12-May-17	02-Oct-16	21-Jun-17	54.29%	35.71%	-39							
A20310	Materials Submission & Approval	210	249	02-Oct-16	12-May-17	02-Oct-16	21-Jun-17	54.29%	35.71%	-39							
Long Lead Materials Procurement & Delivery																	
A20320	Long Lead Materials Procurement & Delivery Start	0	0	17-Dec-16		29-Jan-17		100%	0%	-39				◆ Long Lead Materials Procurement & Delivery Start, 29-Jan-17			
A20330	Others	270	270	06-Jan-17	15-Oct-17	29-Jan-17	07-Nov-17	8.15%	0%	-22							
Interfacing - Take Over Zone Areas Access																	
M+ Basement																	
B2/F																	
First Access																	
A20360	Sector B	0	0		17-Dec-16		29-Jan-17	100%	0%	-39							
A20370	Sector C	0	0			27-Jan-17		100%	0%	0							
A20380	Sector D	0	0		27-Jan-17		27-Jan-17	100%	0%	0							
A20390	Sector A	0	0		13-Jan-17		27-Jan-17	100%	0%	-14							
A20400	Sector G	0	0		13-Feb-17		25-Feb-17	0%	0%	-12				◆ Sector G,			
A20410	Sector F	0	0		09-Mar-17		22-Mar-17	0%	0%	-13					◆ Sector F,		
B1/F																	
A20470	Sector G	0	0		27-Feb-17		28-Mar-17	0%	0%	-29					◆ Sector G,		
A20480	Sector F	0	0		25-Mar-17		21-Apr-17	0%	0%	-23						◆ Sector F,	
LG/F																	
A20520	Sector G	0	0		27-Feb-17		28-Mar-17	0%	0%	-29					◆ Sector G,		
A20530	Sector F	0	0		25-Mar-17		21-Apr-17	0%	0%	-23						◆ Sector F,	
M+ Podium																	
G/F																	
A20550	Sector B	0	0		13-Feb-17		24-Apr-17	0%	0%	-66						◆ Sector B,	
A20560	Sector C	0	0		23-May-17		07-Apr-17	0%	0%	41							
1/F & 1M/F																	
A20590	Sector C	0	0		31-Mar-17		19-Apr-17	0%	0%	-15						◆ Sector C,	
3/F																	
A20700	Sector A, B, C & D - External Area	0	0		16-Dec-16		27-Jan-17	100%	0%	-39				◆ Sector A, B, C & D - External Area,			
CSF																	
A23720	G/F Curing & Falseworks Stripping	30	30	19-Mar-17	21-Apr-17	09-Apr-17	13-May-17	0%	0%	-20					A23720		
ABWF Works Summary																	
M+ Basement ABWF & Building Services																	
Builders' Works																	
B2/F																	
A23240	B2/F Sector C Builder's Works	60	60	29-Jan-17	31-Mar-17	29-Jan-17	31-Mar-17	0%	0%	0						B2/F Sector C Builder's Works	
A23260	B2/F Sector B Builder's Works	60	60	17-Dec-16	29-Jan-17	31-Mar-17	31-Mar-17	65%	0%	-39						B2/F Sector B Builder's Works	
A23270	B2/F Sector A Builder's Works	60	60	14-Jan-17	17-Mar-17	29-Jan-17	31-Mar-17	23.33%	0%	-14						B2/F Sector A Builder's Works	
A23290	B2/F Sector D Builder's Works	60	60	29-Jan-17	31-Mar-17	31-Mar-17	31-Mar-17	0%	0%	0						B2/F Sector D Builder's Works	
A24500	B2/F Sector F Builder's Works	60	60	10-Mar-17	14-May-17	23-Mar-17	27-May-17	0%	0%	-13					A24500		
B1/F																	
A24510	B1/F Sector G Builder's Works	60	60	28-Feb-17	04-May-17	29-Mar-17	03-Jun-17	0%	0%	-29					A24510		
A24520	B1/F Sector F Builder's Works	60	60	26-Mar-17	31-May-17	22-Apr-17	23-Jun-17	0%	0%	-23						A24520	
Building Services Installation																	
A23490	B1/F Sector C Building Services (late access area)	40	40	17-Dec-16	29-Jan-17	29-Jan-17	11-Mar-17	97.5%	0%	-39						B1/F Sector C Building Services (late access area)	
Lifts and Escalators																	
Podium																	
Freight Lift (LT17)																	
LT10050	Start of Freight Lift Installation (podium weathertight + lead time)	0	0		16-Dec-16		27-Jan-17	100%	0%	-34				◆ Start of Freight Lift Installation (podium weathertight + lead time),			
LT10060	Freight Lift LT17 Installation Period	22	22	16-Dec-16	13-Jan-17	27-Jan-17	25-Feb-17	100%	0%	-34					Freight Lift LT17 Installation Period		
Art Lifts (LT11 & 13)																	
LT10020	Start of Art Lift Installation (podium weathertight + lead time)	0	0		16-Dec-16		27-Jan-17	100%	0%	-34				◆ Start of Art Lift Installation (podium weathertight + lead time),			
LT10030	Art Lifts LT11 & 13 Installation Period	44	44	16-Dec-16	11-Feb-17	27-Jan-17	23-Mar-17	77.27%	0%	-34						Art Lifts LT11 & 13 Installation Period	
Passenger Lifts, with disabled access (LT15, 16, 19, 22 & 23)																	
LT10080	Start of Lift Installation (podium weathertight + lead time)	0	0		16-Dec-16		27-Jan-17	100%	0%	-34				◆ Start of Lift Installation (podium weathertight + lead time),			
LT10090	Passenger Lifts LT 15,16,19,22 &23 Installation Period	44	44	16-Dec-16	11-Feb-17	27-Jan-17	23-Mar-17	77.27%	0%	-34						Passenger Lifts LT 15,16,19,22 &23 Installation Period	
Passenger Lifts, FS (LT12, 14, 20 & 21)																	
LT10120	Start of Lift Installation (podium weathertight + lead time)	0	0		16-Dec-16		27-Jan-17	100%	0%	-34				◆ Start of Lift Installation (podium weathertight + lead time),			
LT10130	Passenger Lifts LT12, 14,20&21 Installation Period	44	44	16-Dec-16	11-Feb-17	27-Jan-17	23-Mar-17	77.27%	0%	-34						Passenger Lifts LT12, 14,20&21 Installation Period	
Escalators (A, B, C, D & E)																	
LT10140	Start of Escalators Installation (podium weathertight + lead time)	0	0		16-Dec-16		27-Jan-17	100%	0%	-34				◆ Start of Escalators Installation (podium weathertight + lead time),			
LT10150	Escalators A,B,C,D&E Installation Period	44	44	16-Dec-16	11-Feb-17	27-Jan-17	23-Mar-17	77.27%	0%	-34						Escalators A,B,C,D&E Installation Period	
Tower																	
Service Lifts (LT01 & 02)																	
LT10180	Commence LT01 & 02 Lift Installation (tower weathertight + lead time)	0	0		16-Dec-16		27-Jan-17	100%	0%	-34				◆ Commence LT01 & 02 Lift Installation (tower weathertight + lead time),			
LT10190	Lift Installation Period (LT01 & 02)	44	44	16-Dec-16	11-Feb-17	27-Jan-17	23-Mar-17	77.27%	0%	-34						Lift Installation Period (LT01 & 02)	
Staff Lifts (LT03 & 04)																	
LT10210	Start of Lift Installation (tower weathertight + lead time)	0	0		16-Dec-16		27-Jan-17	100%	0%	-34				◆ Start of Lift Installation (tower weathertight + lead time),			
LT10220	Lift Installation Period (LT03 & 04)	44	44	16-Dec-16	11-Feb-17	27-Jan-17	23-Mar-17	77.27%	0%	-34						Lift Installation Period (LT03 & 04)	
Public Lifts (LT05 to 08, 4nos, pit in B2F)																	
LT10240	Start of Lift Installation (tower weathertight + lead time)	0	0		16-Dec-16		27-Jan-17	100%	0%	-34				◆ Start of Lift Installation (tower weathertight + lead time),			
LT10250	Lift Installation Period, LT05 & 06, LT05 - 08	44	44	16-Dec-16	11-Feb-17	27-Jan-17	23-Mar-17	77.27%	0%	-34						Lift Installation Period, LT05 & 06, LT05 - 08	
LT10260	Earliest lift installation for LT07 & 08, if necessary	0	0		16-Dec-16		27-Jan-17	100%	0%	-34				◆ Earliest lift installation for LT07 & 08, if necessary,			
LT10270	Lift Installation Period, LT07 & 08	44	44	16-Dec-16	11-Feb-17	27-Jan-17	23-Mar-17	77.27%	0%	-34						Lift Installation Period, LT07 & 08	
Public Lifts (LT09 & 10, pit in G/F)																	
LT10290	Start of Lift Installation (tower weathertight + lead time)	0	0		16-Dec-16		27-Jan-17	100%	0%	-34				◆ Start of Lift Installation (tower weathertight + lead time),			
LT10300	Lift Installation Period, LT09 & 10	44	44	16-Dec-16	11-Feb-17	27-Jan-17	23-Mar-17	77.27%	0%	-34						Lift Installation Period, LT09 & 10	
Co-ordinated External Works & Utilities Services Installation																	
Interface Dates																	
Access Dates																	
A24720	M12 - Lyric Interface North (2nd access) (30Nov16)	0	0	13-Jan-17		28-Jan-17*		100%	0%	-15				◆ M12 - Lyric Interface North (2nd access) (30Nov16), 28-Jan-17*			
A25000	M43 - At-grade Road Footpath at ICP / SPS Entrance Portal (from PIW)	0	0	15-Feb-17		15-Feb-17*		0%	0%	0				◆ M43 -At-grade Road Footpath at ICP / SPS Entrance Portal (from PIW) (15Feb2017), 15-Feb-17*			
A25010	M44 - At-grade Road Footpath at ICP / SPS Frontage (from PIW) (1Jun2016)	0	0	17-Dec-16		28-Jan-17		100%	0%	-42				◆ M44 -At-grade Road Footpath at ICP / SPS Frontage (from PIW) (1Jun2016), 28-Jan-17			
A25020	M45 - At-grade Road Footpath along M+ Basement (from PIW) (1Jun2016)	0	0	17-Dec-16		28-Jan-17		100%	0%	-42				◆ M45 -At-grade Road Footpath along M+ Basement (from PIW) (1Jun2016), 28-Jan-17			
A25130	M70 - Arts Pavilion Area on M+ side of M+ / Park Interface (t.b.a.), 28-Jan-17	0	0	17-Dec-16		28-Jan-17		100%	0%	-42				◆ M70 -Arts Pavilion Area on M+ side of M+ / Park Interface (t.b.a.), 28-Jan-17			
Vacation Date																	
A25840	M71 - Area Within Initial M+ Hoarding, but on Park Side of M+/Park Int	0	0		16-Dec-16		27-Jan-17*	100%	0%	-42				◆ M71 - Area Within Initial M+ Hoarding, but on Park Side of M+/Park Interface Line (for Access by Park Ctr)(15Jun2016),			
Interface Schedule (Appendix D1 - 16 December 2015)																	
Lyric Theatre Complex and Extended Basement (Lyric)																	
Along Interface North of AEL																	
A25950	Complete excavation north of AEL for B2/F slab and vacate M12	0	0		16-Dec-16		27-Jan-17*	100%	0%	-33				◆ Complete excavation north of AEL for B2/F slab and vacate M12,			

Data Date: 27-Jan-17										Three Months Rolling Programme (3MRP) - 27 Jan 2017 (MTH16)										Page 20 of 22																			
Layout Name: MICP_3MRP_2																																							
File Name: M+ MICP D14 OP3A - Month 16 - 27 Jan '17																																							
Activity ID	Activity Name	Original Duration	Dur	MICP D15 Start	MICP D15 Finish	Start	Finish	Planned % Complete	Actual % Complete	Finish Variance (+/-)	2016										2017																		
											Jan 16					Feb 17					Mar 18					Apr 19					May 20								
<div><div></div><div>A25960 Take possession of M12 for external wall construction (30 Nov 2016)</div></div>											0	0	13-Jan-17		01-Feb-17		100%	0%	-13																				
<div><div></div><div>PIW Phase 1</div></div>																																							
<div><div></div><div>M+ Portal Road Interface PIW at Grade Road</div></div>																																							
<div><div></div><div>A26180 Access Portion M43</div></div>											0	0	15-Feb-17		15-Feb-17		0%	0%	0																				
<div><div></div><div>M+ Drain Connection to PIW Drainage MH WHC6_1f</div></div>																																							
<div><div></div><div>A26190 Commencement of drainage work for WHC6_1f</div></div>											0	0	06-Jan-17		31-Feb-17*		100%	0%	-19																				
<div><div></div><div>A26200 Complete of drainage work for WHC6_1f</div></div>											0	0		10-Feb-17		04-Mar-17*	0%	0%	-19																				
<div><div></div><div>Towngas Interface PIW</div></div>																																							
<div><div></div><div>DN150 Incoming gas main at Entrance Portal (CIV-DWG-0403)</div></div>											0	0	03-Apr-17		03-Apr-17*		0%	0%	0																				
<div><div></div><div>A26210 Complete Entrance Portal RC Structure</div></div>											6	6	03-Apr-17	10-Apr-17	03-Apr-17	10-Apr-17	0%	0%	0																				
<div><div></div><div>A26220 Excavate Trench & Install Shoring for Gas Main @ Footway (To be coo</div></div>											6	6	11-Apr-17	20-Apr-17	11-Apr-17	20-Apr-17	0%	0%	0																				
<div><div></div><div>A26230 Allow Towngas to install gas main (By Towngas)</div></div>											3	3	21-Apr-17	24-Apr-17	21-Apr-17	24-Apr-17	0%	0%	0																				
<div><div></div><div>A26240 Backfill Trench to Ground Levels</div></div>											6	6	03-Apr-17	10-Apr-17	03-Apr-17	10-Apr-17	0%	0%	0																				
<div><div></div><div>DN150 Incoming gas main for RDE (CIV-DWG-0404)</div></div>											6	6	05-Apr-17	11-Apr-17	24-Apr-17	29-Apr-17	0%	0%	-13																				
<div><div></div><div>A26250 Excavate Trench & Install Shoring for Gas Main @ Footway (To be coo</div></div>											0	0	03-Apr-17		03-Apr-17		0%	0%	0																				
<div><div></div><div>M+ Road Interface with PIW</div></div>																																							
<div><div></div><div>A26310 Allow Access to PIW to construct traffic signal draw pits, controller, sig</div></div>											0	0	03-Apr-17		03-Apr-17		0%	0%	0																				
<div><div></div><div>Seawater Cooling Intake Pipes Interface PIW</div></div>																																							
<div><div></div><div>Civil Works Interface with PIW Watermain South of M+</div></div>																																							
<div><div></div><div>KGO Cooling Main Diversion</div></div>																																							
<div><div></div><div>A26360 Allow access to PIW Contractor to complete KGO Cooling Main Divers</div></div>											0	0	01-Apr-17		01-Apr-17*		0%	0%	0																				
<div><div></div><div>Park</div></div>																																							
<div><div></div><div>Sewage Interface w/ Park PIW (SW of M+ & ICP SP5)</div></div>											0	0		20-Mar-17		06-Apr-17	0%	0%	-14																				
<div><div></div><div>A26430 Complete Laying Sewer Pipe DN300 from F2.1E to SM19</div></div>											0	0																											
<div><div></div><div>Telecoms Interface w/ Park PIW (W of M+)</div></div>											0	0	17-Dec-16		01-Feb-17		100%	0%	-33																				
<div><div></div><div>A26520 Allow Access to Park Contractor to connect ICT Cable Ducts to M+ Dr</div></div>											0	0	17-Dec-16		01-Feb-17		100%	0%	-33																				
<div><div></div><div>A26530 Allow Access to Park Contractor to connect ELV Cable Ducts to M+ D</div></div>											0	0	17-Dec-16		01-Feb-17		100%	0%	-33																				
<div><div></div><div>A26540 Allow Access to Park Contractor to construct & connect FTNS Cable L</div></div>											0	0	17-Dec-16		01-Feb-17		100%	0%	-33																				
<div><div></div><div>CLP</div></div>																																							
<div><div></div><div>A26550 Handover M+ - Transformer Room Trx A to CLP</div></div>											0	0		06-Apr-17		06-Apr-17*	0%	0%	0																				
<div><div></div><div>A26560 Handover M+ - Transformer Room Trx B to CLP</div></div>											0	0		03-Mar-17		03-Mar-17*	0%	0%	0																				
<div><div></div><div>A26580 Handover RDE - Transformer Room to CLP</div></div>											0	0		06-Apr-17		06-Apr-17*	0%	0%	0																				
<div><div></div><div>Construction</div></div>																																							
<div><div></div><div>Seawater Outfall Pipe</div></div>																																							
<div><div></div><div>Submissions & Approval</div></div>																																							
<div><div></div><div>A26620 RSS Review & Approve Trench Detail Design and Method Statement</div></div>											109	142	12-Aug-16	20-Dec-16	12-Aug-16	03-Feb-17	100%	97.25%	-33																				
<div><div></div><div>Construction at CH0+66 to CH0+106</div></div>																																							
<div><div></div><div>Trench Excavation & Pipe works (CH0+66 to CH0+102)</div></div>																																							
<div><div></div><div>A26660 Install Strut & Wailing @ +3.5mPD</div></div>											12	12	17-Dec-16	03-Jan-17	01-Feb-17	14-Feb-17	100%	0%	-33																				
<div><div></div><div>A26670 Trench Excavation@+3.0mPD to Final excavation Lvl</div></div>											3	3	04-Jan-17	06-Jan-17	15-Feb-17	17-Feb-17	100%	0%	-33																				
<div><div></div><div>A26680 Pipe Laying & Associated Works</div></div>											6	6	07-Jan-17	13-Jan-17	18-Feb-17	24-Feb-17	100%	0%	-33																				
<div><div></div><div>A26690 Construct Bend Blocks</div></div>											6	6	14-Jan-17	20-Jan-17	25-Feb-17	03-Mar-17	100%	0%	-33																				
<div><div></div><div>A26700 Pressure Test</div></div>											6	6	21-Jan-17	27-Jan-17	04-Mar-17	10-Mar-17	100%	0%	-33																				
<div><div></div><div>A26710 Back Filling to Struts & Wailing Lvl</div></div>											6	6	01-Feb-17	07-Feb-17	11-Mar-17	17-Mar-17	0%	0%	-33																				
<div><div></div><div>A26720 Dismantle Struts & Wailing</div></div>											3	3	08-Feb-17	10-Feb-17	18-Mar-17	21-Mar-17	0%	0%	-33																				
<div><div></div><div>A26730 Back Filling to GL</div></div>											6	6	11-Feb-17	17-Feb-17	22-Mar-17	28-Mar-17	0%	0%	-33																				
<div><div></div><div>A26740 Extract Sheetpiles</div></div>											3	3	18-Feb-17	21-Feb-17	29-Mar-17	31-Mar-17	0%	0%	-33																				
<div><div></div><div>Construct Cofferdam & Pipe works for Lead In (CH0+102 to CH0+106)</div></div>																																							
<div><div></div><div>A26750 Drive in Sheetpiles (Cofferdam) @ 18m depth</div></div>											9	9	22-Dec-16	04-Jan-17	06-Feb-17	15-Feb-17	100%	0%	-33																				
<div><div></div><div>A26760 Curtain Grouting (where required)</div></div>											12	12	05-Jan-17	18-Jan-17	16-Feb-17	01-Mar-17	100%	0%	-33																				
<div><div></div><div>A26770 Dewatering</div></div>											1	1	19-Jan-17	19-Jan-17	02-Mar-17	02-Mar-17	100%	0%	-33																				
<div><div></div><div>A26780 ELS Excavation (Cofferdam)@GL+5.0mPD to +3.0mPD</div></div>											3	3	20-Jan-17	23-Jan-17	03-Mar-17	06-Mar-17	100%	0%	-33																				
<div><div></div><div>A26790 Install 1st Layer Strut & Wailing (Cofferdam) @ +3.5mPD</div></div>											6	6	24-Jan-17	02-Feb-17	07-Mar-17	13-Mar-17	66.67%	0%	-33																				
<div><div></div><div>A26800 ELS Excavation (Cofferdam)@+3.0mPD to +0.275mPD</div></div>											3	3	03-Feb-17	06-Feb-17	14-Mar-17	16-Mar-17	0%	0%	-33																				
<div><div></div><div>A26810 Install 2nd Layer Strut & Wailing (Cofferdam) @ +0.775mPD</div></div>											6	6	07-Feb-17	13-Feb-17	17-Mar-17	23-Mar-17	0%	0%	-33																				
<div><div></div><div>A26820 ELS Excavation (Cofferdam)@+0.275mPD to -2.45mPD</div></div>											3	3	14-Feb-17	16-Feb-17	24-Mar-17	27-Mar-17	0%	0%	-33																				
<div><div></div><div>A26830 Install 3rd Layer Strut & Wailing (Cofferdam) @ -1.95mPD</div></div>											6	6	17-Feb-17	23-Feb-17	28-Mar-17	03-Apr-17	0%	0%	-33																				
<div><div></div><div>A26840 ELS Excavation Final (Cofferdam)@ -2.45mPD to -3.70mPD</div></div>											3	3	24-Feb-17	27-Feb-17	05-Apr-17	07-Apr-17	0%	0%	-33																				
<div><div></div><div>A26850 Pipe Laying & Associated Works</div></div>											4	4	28-Feb-17	03-Mar-17	08-Apr-17	12-Apr-17	0%	0%	-33																				
<div><div></div><div>A26860 Construct 2 Nos of Bend Block</div></div>											6	6	04-Mar-17	10-Mar-17	13-Apr-17	22-Apr-17	0%	0%	-33																				
<div><div></div><div>A26870 Construct Valve Chamber</div></div>											10	10	11-Mar-17	22-Mar-17	24-Apr-17	06-May-17	0%	0%	-33																				
<div><div></div><div>Construction at CH0+0 to CH0+66</div></div>																																							
<div><div></div><div>Trench Excavation & Pipe works CH0+32 to CH0+66</div></div>																																							
<div><div></div><div>A26960 Drive In Sheet Piles</div></div>											9	9	22-Feb-17	03-Mar-17	01-Apr-17	12-Apr-17	0%	0%	-33																				
<div><div></div><div>A26970 Trench Excavation</div></div>											3	3	04-Mar-17	07-Mar-17	13-Apr-17	19-Apr-17	0%	0%	-33																				
<div><div></div><div>A26980 Install 1st Layer of Struts & Wailing</div></div>											12	12	08-Mar-17	21-Mar-17	20-Apr-17	05-May-17	0%	0%	-33																				
<div><div></div><div>Trench Excavation & Pipe works CH0+0 to CH0+32</div></div>																																							
<div><div></div><div>A27100 Drive in Sheet Piles</div></div>											9	9	22-Feb-17	03-Mar-17	01-Apr-17	12-Apr-17	0%	0%	-33																				
<div><div></div><div>A27110 Trench @GL+5.0mPD to +4.0mPD</div></div>											3	3	04-Mar-17	07-Mar-17	13-Apr-17	19-Apr-17	0%	0%	-33																				
<div><div></div><div>A27120 Install 1st Layer Strut & Wailing@ +4.5mPD</div></div>											12	12	08-Mar-17	21-Mar-17	20-Apr-17	05-May-17	0%	0%	-33																				
<div><div></div><div>DCS Box (Portion M15&M16)</div></div>																																							
<div><div></div><div>A27270 Strip Formwork</div></div>											1	1	17-Dec-16	17-Dec-16	01-Feb-17	01-Feb-17	100%	0%	-33																				
<div><div></div><div>Seawater Intake Pipe Works</div></div>																																							
<div><div></div><div>A27370 Prepare & Submit Detailed Design and Modification Works to RSS</div></div>											10	10	17-Dec-16	30-Dec-16	01-Feb-17	11-Feb-17	100%	0%	-33																				
<div><div></div><div>A27380 RSS Review & Approve Detail Design and Modification Works</div></div>											12	12	31-Dec-16	14-Jan-17	13-Feb-17	25-Feb-17	100%	0%	-33																				
<div><div></div><div>Construction of Seawater Intake Pipe</div></div>																																							
<div><div></div><div>A27390 Form Access Road / Traffic Diversion (Along Seawall)</div></div>											6	6	16-Jan-17	21-Jan-17	27-Feb-17	04-Mar-17	100%	0%	-33																				
<div><div></div><div>A27400 Install UU Supports</div></div>											12	12	23-Jan-17	08-Feb-17	06-Mar-17	18-Mar-17	41.67%	0%	-33																				
<div><div></div><div>A27410 Drill holes, Inject Curtain Grout & backfill</div></div>											24	24	09-Feb-17	08-Mar-17	20-Mar-17	20-Apr-17	0%	0%	-33																				
<div><div></div><div>A27420 Excavate from G/F (+4.5mPD) to +2.0mPD</div></div>											3	3	09-Mar-17	11-Mar-17	21-Apr-17	24-Apr-17	0%	0%	-33																				
<div><div></div><div>A27430 Install UU Support</div></div>											12	12	13-Mar-17	25-Mar-17	25-Apr-17	10-May-17	0%	0%	-33																				
<div><div></div><div>Sewerage</div></div>																																							
<div><div></div><div>Sewerage Interface with PIW & F2 Contractor</div></div>																																							
<div><div></div><div>Sewerage at Austin Road West (Portion L06)</div></div>																																							
<div><div></div><div>A27790 PIW Implement TTMS & Allow Access to Manhole F1.2 to HCC</div></div>											0	0	01-Feb-17		31-Feb-17*		0%	0%	0																				
<div><div></div><div>A27800 Excavate Trial Trench for UU within Austin Road West Area</div></div>											12	12	01-Feb-17	14-Feb-17	01-Feb-17	14-Feb-17	0%	0%	0																				
<div><div></div><div>A27810 Demolished Existing Planter</div></div>											10	10	15-Feb-17	25-Feb-17	15-Feb-17	25-Feb-17	0%	0%	0																				
<div><div></div><div>A27820 Excavate & Install Lateral Support</div></div>											10	10	27-Feb-17	09-Mar-17	27-Feb-17	09-Mar-17	0%	0%	0																				
<div><div></div><div>A27830 Construct M+ Terminal Manhole F1.3A</div></div>											6	6	10-Mar-17	16-Mar-17	10-Mar-17	16-Mar-17	0%	0%	0																				
<div><div></div><div>A27840 Lay down DN375 F1.3B to F1.3A to F1.2</div></div>											3	3	17-Mar-17	20-Mar-17	17-Mar-17	20-Mar-17	0%	0%	0																				
<div><div></div><div>A27850 Pressure Test</div></div>											3	3	21-Mar-17	23-Mar-17	21-Mar-17	23-Mar-17	0%	0%	0																				
<div><div></div><div>A27860 Back fill & Reinstate pavement / Reinstate Planter</div></div>											9	9	24-Mar-17	03-Apr-17	24-Mar-17	03-Apr-17	0%	0%	0																				
<div><div></div><div>A27870 HCC connect DN375 to F1.2</div></div>											1	1	05-Apr-17	05-Apr-17	05-Apr-17	05-Apr-17	0%	0%	0																				
<div><div></div><div>Sewerage adjacent to CLP Station (Portion L19)</div></div>																																							
<div><div></div><div>A27880 F2 (Gammon's) allow access to HCC at Portion L06</div></div>											0	0	01-Feb-17		31-Feb-17*		0%	0%	0																				
<div><div></div><div>A27890 Excavate Trench and install shoring for sewer drain along CLP Station</div></div>											14	14	01-Feb-17	16-Feb-17	01-Feb-17	16-Feb-17	0%	0%	0																				

Activity ID	Activity Name	Original Duration	Dur	MICP D15 Start	MICP D15 Finish	Start	Finish	Planned % Complete	Actual % Complete	Finish Variance (+/-)	2016	2017			
											Jan 16	Feb 17	Mar 18	Apr 19	May 20
A27900	Construct manholes F1.3C and F1.3B	10	10	17-Feb-17	28-Feb-17	17-Feb-17	28-Feb-17	0%	0%	0					
A27910	Lay down DN375 from F1.3C to F1.3B (approx. 39m)	7	7	01-Mar-17	08-Mar-17	01-Mar-17	08-Mar-17	0%	0%	0					
A27920	Pressure Test	3	3	09-Mar-17	11-Mar-17	09-Mar-17	11-Mar-17	0%	0%	0					
A27930	Backfill to adjacent ground level	8	8	13-Mar-17	21-Mar-17	13-Mar-17	21-Mar-17	0%	0%	0					
Sewerage at Portion M01, Gridline A / 3-14															
A27940	HCC grant access to Park Contractor for SM100 construction	0	0	28-Mar-17		18-Apr-17		0%	0%	-14					
MH F2.1B to MH F2.1A															
A27960	Completion of G/F Slab, Wall & Column at Portion A	0	0		17-Jan-17		08-Feb-17	100%	0%	-16					
A27970	Manhole & Trench Excavation for Sewerage Pipe between MH F2.1B to	2	2	18-Jan-17	19-Jan-17	09-Feb-17	10-Feb-17	100%	0%	-16					
A27980	Construct Manhole F2.1A	6	6	20-Jan-17	26-Jan-17	11-Feb-17	17-Feb-17	100%	0%	-16					
A27990	Lay Sewerage Pipe DN300 between MH F2.1A to F2.1B (Approx. 25m)	4	4	20-Jan-17	24-Jan-17	11-Feb-17	15-Feb-17	100%	0%	-16					
A28000	Lay & Connect Sewerage Pipe incoming from M+ to MH F2.1A	2	2	25-Jan-17	26-Jan-17	16-Feb-17	17-Feb-17	100%	0%	-16					
A28010	Pressure Test	3	3	27-Jan-17	02-Feb-17	18-Feb-17	21-Feb-17	33.33%	0%	-16					
A28020	Backfill to ground level	4	4	03-Feb-17	07-Feb-17	22-Feb-17	25-Feb-17	0%	0%	-16					
MH F2.1C to MH F2.1B															
A28030	Manhole & Trench Excavation for Sewerage Pipe between MH F2.1C to	2	2	27-Jan-17	01-Feb-17	18-Feb-17	20-Feb-17	50%	0%	-16					
A28040	Construct Manhole F2.1B & F2.1C	16	16	02-Feb-17	20-Feb-17	21-Feb-17	10-Mar-17	0%	0%	-16					
A28050	Lay Sewerage Pipe DN300 between MH F2.1C to F2.1B (Approx.40m)	7	7	02-Feb-17	09-Feb-17	21-Feb-17	28-Feb-17	0%	0%	-16					
A28060	Pressure test	3	3	21-Feb-17	23-Feb-17	11-Mar-17	14-Mar-17	0%	0%	-16					
A28070	Backfill to ground level	5	5	24-Feb-17	01-Mar-17	15-Mar-17	20-Mar-17	0%	0%	-16					
MH F2.1D to MH F2.1C															
A28080	Completion of G/F Slab, Wall & Column at Portion E	0	0		22-Feb-17		24-Feb-17	0%	0%	-2					
A28090	Manhole & Trench Excavation for Sewerage Pipe between MH F2.1D to	3	3	23-Feb-17	25-Feb-17	11-Mar-17	14-Mar-17	0%	0%	-14					
A28100	Construct Manhole F2.1D	10	10	27-Feb-17	09-Mar-17	15-Mar-17	25-Mar-17	0%	0%	-14					
A28110	Lay Sewerage Pipe DN375 between MH F2.1D to F2.1C (Approx. 21m)	4	4	27-Feb-17	02-Mar-17	15-Mar-17	18-Mar-17	0%	0%	-14					
A28120	Lay & Connect Sewerage Pipe incoming from M+ to MH F2.1C	2	2	03-Mar-17	04-Mar-17	20-Mar-17	21-Mar-17	0%	0%	-14					
A28130	Pressure Test	3	3	10-Mar-17	13-Mar-17	27-Mar-17	29-Mar-17	0%	0%	-14					
A28140	Backfill to ground level	3	3	14-Mar-17	16-Mar-17	30-Mar-17	01-Apr-17	0%	0%	-14					
MH F2.1E to MH F2.1D															
A28150	Manhole & Trench Excavation for Sewerage Pipe between MH F2.1E to	3	3	10-Mar-17	13-Mar-17	27-Mar-17	29-Mar-17	0%	0%	-14					
A28160	Construct Manholes F2.1E	6	6	14-Mar-17	20-Mar-17	30-Mar-17	06-Apr-17	0%	0%	-14					
A28170	Lay Sewerage Pipe between MH F2.1E to F2.1D (DN375mm) (Approx.	6	6	14-Mar-17	20-Mar-17	30-Mar-17	06-Apr-17	0%	0%	-14					
A28180	Pressure Test	3	3	21-Mar-17	23-Mar-17	07-Apr-17	10-Apr-17	0%	0%	-14					
A28190	Backfill to ground level	3	3	24-Mar-17	27-Mar-17	11-Apr-17	13-Apr-17	0%	0%	-14					
Sewerage at Portion M05 & M27															
A28200	Complete Sewerage Pipe & MH SM23, SM22B, SM22A inside SPS	0	0		07-Jan-17		27-Jan-17	100%	0%	-17					
A28210	Complete B1 Column, Wall & Slab at ICP Portion A18	0	0		18-May-17		28-Mar-17	0%	0%	38					
A28220	Complete B1 Column, Wall & Slab at ICP Portion A19	0	0		21-Jun-17		01-Apr-17	0%	0%	62					
A28230	Complete B1 Column, Wall & Slab at ICP Portion A20	0	0		17-Jun-17		11-Mar-17	0%	0%	77					
A28240	Complete B1 Column, Wall & Slab at ICP Portion A21	0	0		21-Jun-17		01-Apr-17	0%	0%	62					
A28250	Complete SPS Structure	0	0		15-Mar-17		19-Apr-17	0%	0%	-26					
MH SM22 to SM21T (DN450)															
A28260	Excavate & Lateral Support for Manhole SM22 & SM21T	3	3	16-Mar-17	18-Mar-17	20-Apr-17	22-Apr-17	0%	0%	-26					
A28270	Construct MH SM22 & SM21T	18	18	20-Mar-17	10-Apr-17	24-Apr-17	16-May-17	0%	0%	-26					
MH SM21A to Interface MH SM13															
Submissions															
A28440	Prepare & Submit ELS Design to RSS for Approval	6	6	09-Jan-17	14-Jan-17	01-Feb-17	07-Feb-17	100%	0%	-17					
A28450	RSS Review & Approve ELS Design	12	12	16-Jan-17	01-Feb-17	08-Feb-17	21-Feb-17	91.67%	0%	-17					
Construction															
A28460	Drive In Sheetpiles	12	12	22-Jun-17	06-Jul-17	03-Apr-17	20-Apr-17	0%	0%	62					
A28470	Trench Excavation & Lateral Support from SM21A to SM13	18	18	07-Jul-17	27-Jul-17	21-Apr-17	13-May-17	0%	0%	62					
Storm Drainage															
Storm Drain DN750 along Gridline A/3-11 (MH S2.4 to S2.6)															
A28520	Excavate to formation level	3	3	08-Feb-17	10-Feb-17	27-Feb-17	01-Mar-17	0%	0%	-16					
A28530	Construct Manhole S2.4 & S2.6	12	12	11-Feb-17	24-Feb-17	02-Mar-17	15-Mar-17	0%	0%	-16					
A28540	Lay DN700 pipe from Manholes S2.4 to S2.6 (Approx. 78m)	14	14	25-Feb-17	13-Mar-17	16-Mar-17	31-Mar-17	0%	0%	-16					
A28550	Pressure Test	3	3	14-Mar-17	16-Mar-17	01-Apr-17	05-Apr-17	0%	0%	-16					
A28560	Backfill to existing ground level	5	5	17-Mar-17	22-Mar-17	06-Apr-17	11-Apr-17	0%	0%	-16					
Storm Drain DN1050 along Gridline A/11-14 (MH S2.6 to S2.6A to S2.7 to S2.8)															
A28570	Excavate to formation level & install shoring	6	6	14-Mar-17	20-Mar-17	01-Apr-17	08-Apr-17	0%	0%	-16					
A28580	Construct Manhole S2.6a, S2.7 & S2.8	12	12	21-Mar-17	03-Apr-17	10-Apr-17	26-Apr-17	0%	0%	-16					
Storm Drain DN400 suspended along Gridline J/1'-M/1															
Storm Drain at Portion M12															
A29080	External Wall @ gridline J/1'-6' (including Wall Finish) complete	0	0		11-Mar-17		03-Apr-17	0%	0%	-19					
A29090	Erect Working Platform	12	12	13-Mar-17		05-Apr-17	21-Apr-17	0%	0%	-19					
A29100	Install Brackets for Suspension Pipe	10	10	27-Mar-17	07-Apr-17	22-Apr-17	05-May-17	0%	0%	-19					
Storm Drain DN250 suspended along Gridline M/4-12															
Storm Drain at Portion M14															
A29250	Coordinate with Lyrics Contractor for temporary access to M14 (App-	0	0	31-Mar-17		31-Mar-17*		0%	0%	0					
Storm Drain DN600 at Portion M45															
Storm Drain along Gridline D'-E/1'-2' (MH WHC6_1c to S3.4)															
A29380	Formation and Construct MH S3.4	8	8	17-Dec-16	28-Dec-16	01-Feb-17	09-Feb-17	100%	0%	-33					
A29400	Lay DN600 pipe from WHC6_1c to MHS3.4 (Approx. 18m)	98	132	24-Aug-16	20-Dec-16	24-Aug-16	03-Feb-17	100%	96.94%	-34					
A29410	Pressure Test	3	3	20-Dec-16	23-Dec-16	04-Feb-17	07-Feb-17	100%	0%	-34					
A29420	Backfill and reinstate pavement	95	129	26-Aug-16	19-Dec-16	26-Aug-16	02-Feb-17	100%	97.9%	-34					
Storm Drain along Gridline E'-G' / 1'-2' (MH S3.4 to S3.3 to S3.2)															
A29430	Complete B1 Slab, Columns & Walls at GL F' to H' / 1'-3'	0	0		19-Jan-17		07-Feb-17	100%	0%	-13					
A29440	Formation & Construct MH S3.3 & S3.2	10	10	20-Jan-17	03-Feb-17	08-Feb-17	18-Feb-17	70%	0%	-13					
A29450	Connect DN250 pipe x 3Nos to MH S3.3	1	1	03-Feb-17	03-Feb-17	18-Feb-17	18-Feb-17	0%	0%	-13					
A29460	Connect DN250 pipe x 2Nos to MH S3.2	1	1	03-Feb-17	03-Feb-17	18-Feb-17	18-Feb-17	0%	0%	-13					
A29470	Formation & Lay DN600 pipe from S3.4 to S3.3 to S3.2 (Approx 7m)	3	3	20-Jan-17	23-Jan-17	08-Feb-17	10-Feb-17	100%	0%	-13					
A29480	Pressure Test	3	3	04-Feb-17	07-Feb-17	20-Feb-17	22-Feb-17	0%	0%	-13					
A29490	Backfill trench to Ground Level	0	0	08-Feb-17		23-Feb-17		0%	0%	-13					
Storm Drain DN450 at Portion M01															
Storm Drain along Gridline G'-J' / 1'-2' (MH S3.2 to S3.1 to S3.1b to S3.1a)															
A29500	Formation & Construct MH S3.1, S3.1b & S3.1a	15	15	08-Feb-17	24-Feb-17	23-Feb-17	11-Mar-17	0%	0%	-13					
A29510	Connect DN200 pipe to MH S3.1	1	1	24-Feb-17	24-Feb-17	11-Mar-17	11-Mar-17	0%	0%	-13					
A29520	Connect DN200 pipe to MH S3.1b	1	1	24-Feb-17	24-Feb-17	11-Mar-17	11-Mar-17	0%	0%	-13					
A29530	Connect DN300 & DN400 pipe to MH S3.1a	1	1	24-Feb-17	24-Feb-17	11-Mar-17	11-Mar-17	0%	0%	-13					
A29540	Formation & Lay DN450 pipe from MH3.2 to S3.1a (Approx. 39m)	4	4	08-Feb-17	11-Feb-17	23-Feb-17	27-Feb-17	0%	0%	-13					
A29550	Pressure Test	3	3	25-Feb-17	28-Feb-17	13-Mar-17	15-Mar-17	0%	0%	-13					
A29560	Backfill trench to Ground Level	2	2	01-Mar-17	02-Mar-17	16-Mar-17	17-Mar-17	0%	0%	-13					
Storm Drain DN375 at Portion M45															
Storm Drain along Gridline A-K' / 5' (S1.1 to S1.2 to WHC6_1e)															
A29590	Excavate Trial Trench for existing Underground Utilities	14	14	17-Dec-16	05-Jan-17	01-Feb-17	16-Feb-17	100%	0%	-33					
A29600	Install support to existing underground Utilities	14	14	06-Jan-17	21-Jan-17	17-Feb-17	04-Mar-17	100%	0%	-33					

Activity ID	Activity Name	Original Duration	Dur	MICP D15 Start	MICP D15 Finish	Start	Finish	Planned % Complete	Actual % Complete	Finish Variance (+/-)											
											2016	Jan 16		Feb 17		Mar 18		Apr 19		May 20	
A29610	Excavate trench for DN375 and install shoring	50	83	03-Nov-16	03-Jan-17	03-Nov-16	14-Feb-17	100%	76%	-33											
A29620	Construct Manhole S1.1 & S1.2	41	74	07-Nov-16	23-Dec-16	07-Nov-16	07-Feb-17	100%	85.37%	-33											
A29630	Lay down DN375 pipe between WHC6_1e to S1.1 to S1.2 (Approx.55m)	40	73	12-Nov-16	30-Dec-16	12-Nov-16	11-Feb-17	100%	74.75%	-33											
A29640	Pressure Test	29	62	16-Nov-16	19-Dec-16	16-Nov-16	02-Feb-17	100%	92.98%	-34											
A29650	Backfill and reinstate pavement	24	57	22-Nov-16	19-Dec-16	22-Nov-16	02-Feb-17	100%	91.67%	-33											
Storm Drain DN150 at Portion M04																					
Storm Drain for MH WHC6_1f																					
A29660	PIW allow access to WHC6_1f for M+ connection	0	0	06-Jan-17			31-Feb-17*	100%	0%	-19											
A29670	Fence off work area for DN150 storm drain excavation	1	1	06-Jan-17	06-Jan-17	01-Feb-17	01-Feb-17	100%	0%	-19											
A29680	Excavate Trial Trench fo existing Underground Utilities	14	14	06-Jan-17	21-Jan-17	01-Feb-17	16-Feb-17	100%	0%	-19											
A29690	Excavate trench for DN150 and install shoring	7	7	23-Jan-17	02-Feb-17	17-Feb-17	17-Feb-17	71.43%	0%	-19											
A29700	Lay down DN150 and connect to WHC6_1f (approx. 11m)	4	4	03-Feb-17	07-Feb-17	25-Feb-17	01-Mar-17	0%	0%	-19											
A29710	Backfill and reinstate pavement	3	3	08-Feb-17	10-Feb-17	02-Mar-17	04-Mar-17	0%	0%	-19											
Storm Drain DN300 at Portion M44 (MH6_2a.1 to DM65)																					
Adjacent SPS to Center of At Grade Road																					
A29720	Agreed with PIW dates for Pipe Laying	0	0		03-Jan-17		27-Jan-17*	100%	0%	-21											
A29730	Excavate trial trench for existing underground utilities	6	6	04-Jan-17	10-Jan-17	01-Feb-17	07-Feb-17	100%	0%	-21											
A29740	Drive In Sheet Piles	3	3	11-Jan-17	13-Jan-17	08-Feb-17	10-Feb-17	100%	0%	-21											
A29750	Excavate to invert level and install struts	6	6	14-Jan-17	20-Jan-17	11-Feb-17	17-Feb-17	100%	0%	-21											
A29760	Construct Manhole DM65	6	6	21-Jan-17	27-Jan-17	18-Feb-17	24-Feb-17	100%	0%	-21											
A29770	Laydown DN300 between DM65 to Center of at Grade Road (Approx. 1:	3	3	21-Jan-17	24-Jan-17	18-Feb-17	21-Feb-17	100%	0%	-21											
A29780	Pressure Test	3	3	01-Feb-17	03-Feb-17	25-Feb-17	28-Feb-17	0%	0%	-21											
A29790	Backfill, Extract Sheet Piles and Reinstate Pavement	6	6	04-Feb-17	10-Feb-17	01-Mar-17	07-Mar-17	0%	0%	-21											
Center of At Grade Road to MH_2a.1																					
A38030	Excavate trial trench for existing underground utilities	6	6	13-Feb-17	18-Feb-17	08-Mar-17	14-Mar-17	0%	0%	-20											
A38040	Drive In Sheet Piles	3	3	20-Feb-17	22-Feb-17	15-Mar-17	17-Mar-17	0%	0%	-20											
A38050	Excavate to invert level and install struts	6	6	23-Feb-17	01-Mar-17	18-Mar-17	24-Mar-17	0%	0%	-20											
A38060	Laydown DN300 between MH6_2a.1 to Center of at Grade Road (Apprc	3	3	02-Mar-17	04-Mar-17	25-Mar-17	28-Mar-17	0%	0%	-20											
A38070	Pressure Test	3	3	06-Mar-17	08-Mar-17	29-Mar-17	31-Mar-17	0%	0%	-20											
A38080	Backfill, Extract Sheet Piles and Reinstate Pavement	6	6	09-Mar-17	15-Mar-17	08-Apr-17	08-Apr-17	0%	0%	-20											
A55050	Agreed with PIW dates for Pipe Laying	0	0		13-Feb-17		07-Mar-17*	0%	0%	-20											
WSD																					
Water Main Works at Portion M01 (Refer to M+ MEP Programme)																					
A29800	PIW Contractor Allow Access to Portion M45 to HCC (IS Appendix D1,	0	0	17-Dec-16		31-Feb-17*		100%	0%	-33											
A29810	Complete Master Meter Room Structure B1 Slab, Wall & Column (Refer	0	0		21-Mar-17		21-Mar-17*	0%	0%	0											
A29820	Remove existing hoarding fixed to Sheet pile	6	6	22-Mar-17	28-Mar-17	22-Mar-17	28-Mar-17	0%	0%	0											
A29830	Install a new hoarding with 500mm clearance from roadside	6	6	29-Mar-17	05-Apr-17	29-Mar-17	05-Apr-17	0%	0%	0											
A29840	Excavate Trench in footway to expose PIW watermain & Cut Down St	2	2	06-Apr-17	07-Apr-17	06-Apr-17	07-Apr-17	0%	0%	0											
A29850	Lay 2Nos of DN150 DI Fresh Water Pipe & 1 No of DN100 DI Salt Wat	5	5	08-Apr-17	13-Apr-17	08-Apr-17	13-Apr-17	0%	0%	0											
A29860	Pressure test (By PIW Contractor)	6	6	18-Apr-17	24-Apr-17	18-Apr-17	24-Apr-17	0%	0%	0											
A29870	Remove the Blank Flanges & Make Final Connection	2	2	25-Apr-17	26-Apr-17	25-Apr-17	26-Apr-17	0%	0%	0											
SPS External - Grd Lvl - Watermain (Outside SPS) to PIW																					
A30040	Complete SPS Structure & Give Access to Park Contractor	0	0		15-Mar-17		19-Apr-17	0%	0%	-26											
A30050	Excavation Across Main Road From SPS Site to PIW Main pipes	12	12	16-Mar-17	29-Mar-17	20-Apr-17	05-May-17	0%	0%	-26											
Power																					
Power Cable 11kV at Footpath adjacent to Entrance Portal (Interface with PIW)																					
A30260	Excavate trench in footway for the 11kV direct buried cables	15	15	01-Feb-17	17-Feb-17	31-Feb-17*	17-Feb-17	0%	0%	0											
A30270	Lay Lead-in Cable (by CLP) & Inspection	30	30	18-Feb-17	19-Mar-17	18-Feb-17	19-Mar-17	0%	0%	0											
A30280	Backfilling footway to adjacent ground level	3	3	20-Mar-17	22-Mar-17	20-Mar-17	22-Mar-17	0%	0%	0											
Power Cable 11kV at Gridline A/ 1-3																					
A30290	Complete Riser Room Structure at Adjacent to Transformer Room A	0	0	13-Feb-17		06-Mar-17		0%	0%	-18											
A30300	Construct 2600mm x 1500mm cable trench & Install Cable Ducts	5	5	13-Feb-17	17-Feb-17	06-Mar-17	10-Mar-17	0%	0%	-18											
A30310	Lay Lead-in Cable (by CLP) & connect to district-wide system	30	30	18-Feb-17	19-Mar-17	11-Mar-17	09-Apr-17	0%	0%	-21											
A30320	Backfilling	3	3	20-Mar-17	22-Mar-17	10-Apr-17	12-Apr-17	0%	0%	-17											
Power Cable 11kV at Gridline A/ 3-14																					
Construction at Drawpitt E1 to Drawpitt E2																					
A30330	Construct Drawpitts E1 & E2	8	8	23-Mar-17	31-Mar-17	12-Apr-17	24-Apr-17	0%	0%	-16											
A30340	Construct Cable Tunnel from Drawpitts E1 to E2 & Install Cable Ducts (19	19	01-Apr-17	27-Apr-17	25-Apr-17	18-May-17	0%	0%	-16											
Gas																					
Gas Main at Portion M01																					
Gas Main RDE connection along Gridline E' - F' / 1'																					
A30700	Trial Trench for Underground Utilities	10	10	08-Feb-17	18-Feb-17	23-Feb-17	06-Mar-17	0%	0%	-13											
A30710	Install support for existing Underground Utilities	6	6	20-Feb-17	25-Feb-17	07-Mar-17	13-Mar-17	0%	0%	-13											
A30720	Excavate Trench for Main Gas 100mm and install shoring	8	8	27-Feb-17	07-Mar-17	14-Mar-17	22-Mar-17	0%	0%	-13											
A30730	Lay down Main Gas 100mm (by Towngas Specialist Contractor)	14	14	08-Mar-17	23-Mar-17	23-Mar-17	08-Apr-17	0%	0%	-13											
A30740	Backfill Trench to Ground Level	4	4	24-Mar-17	28-Mar-17	10-Apr-17	13-Apr-17	0%	0%	-13											
A30750	Testing and Inspection	5	5	29-Mar-17	03-Apr-17	18-Apr-17	22-Apr-17	0%	0%	-13											
Fuel Tank																					
A31200	Prepare & Submit Method Statement for Fuel Tank Construction to RS	18	18	14-Mar-17	03-Apr-17	07-Apr-17	02-May-17	0%	0%	-20											

Lyric Theatre Complex

Activity ID	Activity Name	Durn. (Days)	Programme Rev A Start	Programme Rev A Finish	Current / Actual Start	Current / Actual Finish	Physical % Complete	Finish Variance	Float (Days)	2016												2017												2018	
										Jan	Feb	Mar	Apr	May	Jun	Jul	Aug	Sep	Oct	Nov	Dec	Jan	Feb	Mar	Apr	May	Jun	Jul	Aug	Sep	Oct	Nov	Dec	Jan	Feb
										1	2	3	4	5	6	7	8	9	10	11	12	13	14	15	16	17	18	19	20	21	22	23	24	25	26

F2 Foundation Works for Lyric Theatre Complex

Summary for Major Works

Pre-bored H-Pile

Pre-bored H-Pile Construction

LT.0087	Trial Pile and Obtain BD's Acknowledgement	18	22-Feb-16	12-Mar-16	08-Mar-16 A	09-Mar-16 A	100%	4	
LT.0088	Predrilling, Excluding Portions L02 and L03; 56 nos.	71	20-Feb-16	20-May-16	01-Mar-16 A	13-Jul-16 A	100%	-43	
LT.0089	Pre-bored H-Pile Construction; Rig 1, 104 nos	243	01-Apr-16	21-Jan-17	17-Mar-16 A	21-Jan-17 A	100%	1	
LT.2225	Pre-bored H-Pile Construction; Rig 2, 99 nos	255	01-Apr-16	08-Feb-17	30-Mar-16 A	20-Feb-17 A	100%	-9	
LT.2226	Pre-bored H-Pile Construction; Rig 3, 25 nos	25	01-Apr-16	30-Apr-16	30-Apr-16 A	05-Jul-16 A	100%	-51	
LT.3315	Pre-bored H-Pile Construction; Rig 3, 8 nos	24			23-Sep-16 A	22-Oct-16 A	100%		
LT.3340	Pre-bored H-Pile Construction; Rig 4, 6 nos	13			27-Sep-16 A	14-Oct-16 A	100%		
LT.3370	Pre-bored H-Pile Construction; Rig 3, 19 nos	40			11-Nov-16 A	30-Dec-16 A	100%		

Contract Administrator's Instruction No. 8

LT.3010	Predrilling in Portions L02 and L03; 14 nos.	30	14-Oct-16	17-Nov-16	08-Aug-16 A	01-Sep-16 A	100%	64	
LT.3015	Pre-bored H-Pile Construction; Rig 1, 20 nos	65	14-Feb-17	06-May-17	20-Jan-17 A	02-Mar-17	98%	50	53
LT.3020	Pre-bored H-Pile Construction; Rig 2, 17 nos	67	14-Feb-17	09-May-17	24-Jan-17 A	07-Mar-17	88%	48	49
LT.3390	Pre-bored H-Pile Construction; Rig 4, 16 nos	25			17-Nov-16 A	16-Dec-16 A	100%		
LT.3750	Pre-bored H-Pile Construction; Rig 3, 10 nos	25			28-Dec-16 A	21-Jan-17 A	100%		

BA14 and Testing

LT.0094	Submission of BA14	6	06-Jun-17	12-Jun-17	04-Apr-17	10-Apr-17	0%	63	64
LT.0095	CA's Selection of Proof Drilling Locations	14	09-May-17	23-May-17	07-Mar-17	21-Mar-17	0%	63	64
LT.0096	Proof Drilling	14	23-May-17	06-Jun-17	21-Mar-17	04-Apr-17	0%	63	64
LT.0097	BD's Selection of Test Piles	28	12-Jun-17	10-Jul-17	10-Apr-17	08-May-17	0%	63	64
LT.0098	Load Testing and Submit Reports	32	10-Jul-17	11-Aug-17	08-May-17	09-Jun-17	0%	63	64
LT.0099	BD's Acknowledgement	45	11-Aug-17	25-Sep-17	09-Jun-17	24-Jul-17	0%	63	81

Bored Pile

Bored Pile Construction

LT.0102	Predrilling, Excluding Portions L02 and L03; 145 nos.	125	20-Feb-16	25-Jul-16	02-Mar-16 A	02-Sep-16 A	100%	-33	
LT.0103	Bored Pile Construction; RCD Rig 1, 31 nos.	244	07-Apr-16	27-Jan-17	12-Mar-16 A	28-Apr-17	92%	-71	-84
LT.1895	Bored Pile Construction; RCD Rig 2, 27 nos.	268	18-Mar-16	13-Feb-17	17-Mar-16 A	18-Mar-17	95%	-29	67
LT.1905	Bored Pile Construction; RCD Rig 3, 25 nos.	243	14-Apr-16	06-Feb-17	21-Mar-16 A	27-Mar-17	93%	-42	60
LT.1915	Bored Pile Construction; RCD Rig 4, 25 nos.	245	29-Mar-16	20-Jan-17	23-Mar-16 A	03-Apr-17	91%	-59	54
LT.1925	Bored Pile Construction; RCD Rig 5, 15 nos.	200	28-Apr-16	24-Dec-16	26-Apr-16 A	10-Dec-16 A	100%	13	
LT.1935	Bored Pile Construction; RCD Rig 6, 12 nos. (Including 2 nos. under CAI 017)	175	12-Jul-16	10-Feb-17	13-Jul-16 A	11-Apr-17	74%	-50	48
LT.1945	Bored Pile Construction; RCD Rig 7, 13 nos. (Including 1 no. under CAI 023)	146	14-Jul-16	06-Jan-17	22-Jul-16 A	21-Mar-17	91%	-60	-55
LT.2215	Sonic Logging and Interface Coring Test; Excluding Portions L02 and L03	145	10-Sep-16	08-Mar-17	06-Oct-16 A	28-Apr-17	44%	-40	48
LT.3260	Completion of Bored Pile Construction in Area 6	0				29-Apr-17	0%		-106

Contract Administrator's Instruction No. 8

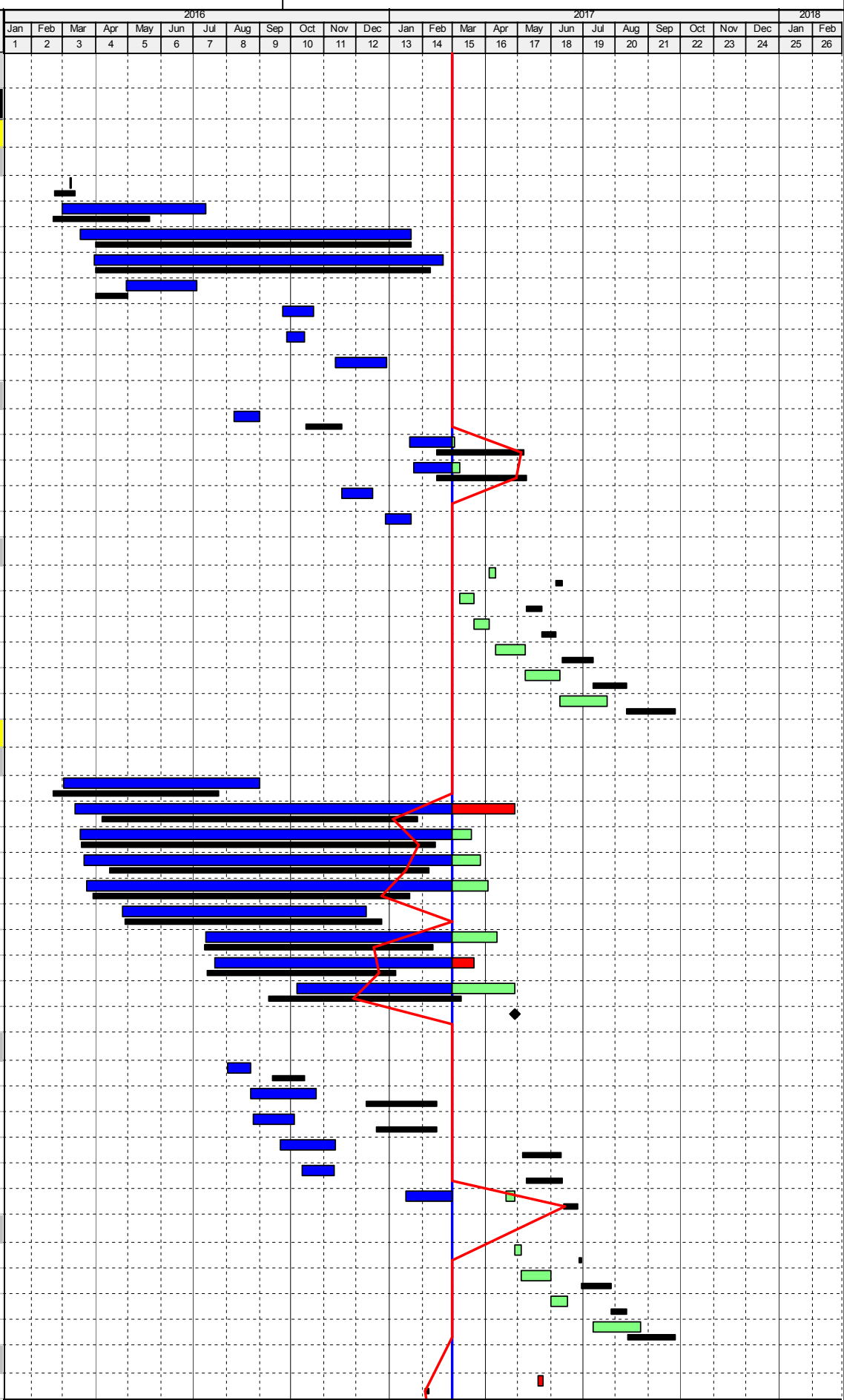
LT.2891	Predrilling in Portions L02 and L03; 11 nos.	24	13-Sep-16	13-Oct-16	03-Aug-16 A	24-Aug-16 A	100%	41	
LT.2895	Bored Pile Construction; RCD Rig 4, 4 nos.	51	10-Dec-16	14-Feb-17	24-Aug-16 A	24-Oct-16 A	100%	92	
LT.2905	Bored Pile Construction; RCD Rig 1, 3 nos.	43	20-Dec-16	14-Feb-17	27-Aug-16 A	04-Oct-16 A	100%	108	
LT.2915	Bored Pile Construction; RCD Rig 4, 2 nos.	30	06-May-17	10-Jun-17	21-Sep-16 A	12-Nov-16 A	100%	168	
LT.2925	Bored Pile Construction; RCD Rig 1, 2 nos.	29	09-May-17	12-Jun-17	11-Oct-16 A	10-Nov-16 A	100%	171	
LT.2935	Sonic Logging and Interface Coring Test; Portions L02 and L03	12	13-Jun-17	26-Jun-17	17-Jan-17 A	28-Apr-17	9%	47	48

BA14 and Testing

LT.0108	Submission of BA14	3	27-Jun-17	29-Jun-17	29-Apr-17	04-May-17	0%	47	48
LT.0109	BD's Selection of Test Piles	28	30-Jun-17	27-Jul-17	05-May-17	01-Jun-17	0%	56	57
LT.0110	Concrete Coring Test and Submit Reports	13	27-Jul-17	11-Aug-17	01-Jun-17	16-Jun-17	0%	47	48
LT.0111	BD's Acknowledgement	45	12-Aug-17	25-Sep-17	10-Jul-17	24-Aug-17	0%	32	50

BA14 and Testing at Area 6 if Option is Exercised

LT.0113	Submission of BA14	3	03-Feb-17	07-Feb-17	20-May-17	24-May-17	0%	-85	-63
---------	--------------------	---	-----------	-----------	-----------	-----------	----	-----	-----



Activity ID	Activity Name	Durn. (Days)	Programme Rev A Start	Programme Rev A Finish	Current / Actual Start	Current / Actual Finish	Physical % Complete	Finish Variance	Float (Days)	2016												2017												2018	
										Jan	Feb	Mar	Apr	May	Jun	Jul	Aug	Sep	Oct	Nov	Dec	Jan	Feb	Mar	Apr	May	Jun	Jul	Aug	Sep	Oct	Nov	Dec	Jan	Feb
										1	2	3	4	5	6	7	8	9	10	11	12	13	14	15	16	17	18	19	20	21	22	23	24	25	26
LT.0114	BD's Selection of Test Piles	28	07-Feb-17	07-Mar-17	24-May-17	21-Jun-17	0%	-107	-80																										
LT.0115	Concrete Coring Test and Submit Reports	15	07-Mar-17	24-Mar-17	21-Jun-17	10-Jul-17	0%	-84	-62																										
LT.3110	BD's Acknowledgement	45	24-Mar-17	08-May-17	10-Jul-17	24-Aug-17	0%	-109	-12																										
Excavation and Lateral Support																																			
Pipe Pile in Areas 1 to 5																																			
LT.0120	Pre-grouting Works at Seawall Area; Portions M15, M16, L01 and L16	40	05-Mar-16	26-Apr-16	05-Mar-16 A	08-Apr-16 A	100%	16																											
LT.0121	Pre-grouting Works at Portions L05, L07, M14b and M12	101	23-Apr-16	23-Aug-16	18-Apr-16 A	26-Jul-16 A	100%	25																											
LT.0122	Pipe Pile and Grout Curtain; Portions L04, L05, L14, L24, M14 and M14b (PP 441 nos and CPP 3 nos	215	21-May-16	08-Feb-17	12-Mar-16 A	06-Mar-17	98%	-22	97																										
LT.3030	Clutched Pipe Pile and Grout Curtain; Portions M14a, L16 and L01 (CPP 82 nos.)	89	25-Jun-16	12-Oct-16	07-Jul-16 A	06-Oct-16 A	100%	4																											
Sheet Pile in Area 6																																			
LT.0124	Sheet Piles Installation in Portion L06; 1,472m2	32	21-Jun-16	28-Jul-16	07-Jun-16 A	25-Jul-16 A	100%	4																											
LT.2945	Sheet Piles Installation in Portions L07 and M12; 1,640m2	35	29-Jul-16	07-Sep-16	04-Jul-16 A	27-Sep-16 A	100%	-16																											
LT.2950	Instrument Installation for Instrumental Sheet Pile	15	28-May-16	15-Jun-16	21-May-16 A	31-May-16 A	100%	13																											
LT.2955	Drive Instrumental Sheet Pile and Report Submission	10	08-Jun-16	20-Jun-16	01-Jun-16 A	16-Jun-16 A	100%	4																											
LT.3720	Additional Sheet Piles Installation in Portions L06 and L07 and Grout Curtain at Corner Piles; 501m2	20			10-Feb-17 A	08-Mar-17	70%		-86																										
Contract Administrator's Instruction No. 8																																			
LT.3050	Pre-grouting Works adjacent Seawall Portion L03	21	17-Sep-16	13-Oct-16	16-Aug-16 A	28-Oct-16 A	100%	-12																											
LT.3060	Pipe Pile and Grout Curtain; Portion L02 (PP 21nos.) + Lower Portion L14 (PP 2 nos.)	20	13-Sep-16	07-Oct-16	06-Dec-16 A	04-Jan-17 A	100%	-71																											
LT.3070	Clutched Pipe Pile and Grout Curtain; Portion L03 (CPP 104 nos. and PP 4 nos)	125	14-Oct-16	15-Mar-17	07-Oct-16 A	06-Mar-17	98%	8	97																										
BA14																																			
LT.0126	Submission of BA14 for Stage 1 ELS Sheet Piling Works at Area 6 (PMC Withdrawn Submission)	2	08-Sep-16	09-Sep-16	08-Oct-16 A	05-Nov-16 A	100%	-45																											
LT.0127	BD's Acknowledgement (BA14 Submission Withdrawn)	14	09-Sep-16	23-Sep-16	06-Nov-16 A	03-Dec-16 A	100%	-70																											
LT.0128	Submission of BA14 for Stage 1 ELS Piling Works at Area 1 to 5	2	16-Mar-17	17-Mar-17	07-Mar-17	08-Mar-17	0%	8	97																										
LT.0129	BD's Acknowledgement	14	17-Mar-17	31-Mar-17	08-Mar-17	22-Mar-17	0%	9	123																										
LT.3723	Submission of BA14 for Stage 1 ELS Sheet Piling Works at Area 6 including CAI No. 019	6			09-Mar-17	15-Mar-17	0%		-86																										
LT.3725	BD's Acknowledgement of Sheet Pile Completion	45			16-Mar-17	29-Apr-17	0%		-107																										
Pumping Test																																			
LT.0131	Install Area 1 to Area 5 Pumping Test Instrumentation & Wells (16 PW + 32 OW) and Submission of I	22	13-Jun-17	08-Jul-17	12-Apr-17	12-May-17	0%	47	59																										
LT.0132	Carry Out Pumping Test in Area 1 to Area 5 and Submission to BD	20	09-Jul-17	28-Jul-17	13-May-17	01-Jun-17	0%	57	72																										
LT.0133	Obtain BD's Acknowledgement of Area 1 to 5 Pumping Test Results	45	29-Jul-17	11-Sep-17	02-Jun-17	16-Jul-17	0%	57	89																										
LT.0134	Install Area 6 Pumping Test Instrumentation & Wells (3 PW + 6 OW) and Submission of Initial Reading	21	07-Dec-16	04-Jan-17	03-Apr-17	02-May-17	0%	-93	-86																										
LT.0135	Carry Out Pumping Test in Area 6 and submission to BD	16	11-Jan-17	26-Jan-17	02-May-17	18-May-17	0%	-113	-110																										
LT.0136	Obtain BD's Acknowledgement of Area 6 Pumping Test Results	45	26-Jan-17	12-Mar-17	18-May-17	02-Jul-17	0%	-113	-110																										
Option Stage 2 ELS and Excavation Works at Area 6																																			
LT.0138	Bulk Excavation and Installation of Struts	102	25-Apr-17	26-Aug-17	12-Aug-17	12-Dec-17	0%	-90	-90																										
LT.0139	Trim Pile Head and Clearance	27	26-Aug-17	27-Sep-17	13-Dec-17	16-Jan-18	0%	-90	-77																										
LT.3075	Submission of BA8 and BA10 for Bulk Excavation Works	35	14-Mar-17	18-Apr-17	02-Jul-17	06-Aug-17	0%	-111	-110																										
LT.3080	Installation of King Posts and Temporary Platform	22	18-Apr-17	16-May-17	07-Aug-17	31-Aug-17	0%	-91	-90																										
BA14 for Option Stage 2 ELS and Excavation Works at Area 6																																			
LT.0141	Submission of BA14 for Stage 2 ELS and Excavation Works at Area 6	2	26-Aug-17	29-Aug-17	13-Dec-17	14-Dec-17	0%	-90	-90																										
LT.0142	BD's Acknowledgement	45	28-Aug-17	12-Oct-17	15-Dec-17	28-Jan-18	0%	-109	-108																										