

M+ Museum

Activity ID	Activity Name	Ori. Dur.	BaseLine Start	BaseLine Finish	Forecast / Actual Start	Forecast / Actual Finish	% Compl.	Finish Variance	Current Float	September 2016				October 2016				November 2016				December 2016				January 2017															
										04	11	18	25	02	09	16	23	30	06	13	20	27	04	11	18	25	01	08													
3MRP Three Months Rolling Programme Update (30 Sept 016)																																									
Contract Key Dates & Milestones																																									
Contract Dates																																									
CP02	Contract Period (1218 days)	1216	26-Sep-15	25-Jan-19	26-Sep-15 A	19-Apr-19	30%	-84	-84																																
Schedule of Milesones																																									
Cost Centre A - Preliminaries and General Requirements																																									
MSA.06	Compliance Review to the CA's satisfaction on Project Time & C	0		30-Jun-16		30-Sep-16	0%	-2	6																																
MSA.07	Compliance Review to the CA's satisfaction on Project Time & C	0		30-Sep-16		30-Sep-16	0%	0	6																																
Cost Centre B - M+																																									
MSB.05	Complete all Columns, Structural Cores and other work necessa	0		30-Sep-16		30-Nov-16	0%	-2	27																																
Cost Centre C - Public Works and Tunnel Protection Works																																									
MSC.02	First delivery of major Truss Steelwork elements to the Site for	0		30-Jun-16		31-Oct-16	0%	-4	28																																
MSC.04i	Complete of all work necessary for commencement of erection	0		30-Sep-16		30-Nov-16	0%	-2	27																																
MSC.04ii	Complete all Columns, Structural Cores and other work necessa	0		31-Jul-16		30-Nov-16	0%	-4	27																																
Cost Centre D2 - Interfacing Car Park Works																																									
MSD2.01	Complete all ELS works (t=M10)	0		31-Jul-16		30-Nov-16	0%	-4	27																																
Interface Dates																																									
Access Date																																									
AD1420	M45 - At-grade Road Footpath along M+ Basement (from PIW)	0	01-Jun-16		30-Sep-16		0%	-121	225																																
AD1530	M70 - Arts Pavilion Area on M+ side of M+ / Park Interface (t.b	0	29-Jun-16		30-Sep-16		0%	-93	848																																
AD1410	M44 - At-grade Road Footpath at ICP / SPS Frontage (from PIW	0	01-Jun-16		30-Sep-16		0%	-121	341																																
AD1110	M12 - Lyric Interface North (2nd access) (30Nov16)	0	29-Dec-16		22-Oct-16		0%	67	34																																
Vacation Date																																									
VD1240	M22 - ICP/SPS Frontage within At-grade Road (H/O to PIW) (3C	0		30-Nov-15		30-Sep-16	0%	-304	-98																																
VD1070	M08 - Park Phase 3 Part at Waterfront (15Jun2016)	0		15-Jun-16		01-Dec-16	0%	-169	785																																
Interface Schedule (Refer to Interface Schedule - Appendix D1 20-Nov-2015)																																									
Lyric Theatre Complex and Extended Basement (Lyric)																																									
Along Interface North of AEL																																									
IF1020	Complete excavation north of AEL for B2/F slab and vacate M12	0		23-Sep-16		30-Sep-16	0%	-6	57																																
IF1060	Take possession of M12 for external wall construction	0	29-Dec-16		29-Oct-16		0%	61	28																																
Along Interface South of AEL																																									
Grid 6 & 12 Area																																									
IF1038	Complete Core Walls on PC96 to G/F Level	0		20-May-16		18-Oct-16	0%	-151	829																																
IF1036	Complete PC109 & Basement Road Wall between PC109 & 116	0		24-May-16		27-Oct-16	0%	-156	820																																
IF1039	Complete Basement Road Wall between PC96, 103 & 105 to G/	0		28-May-16		25-Nov-16	0%	-181	791																																
IF1034	Complete External Wall from B1/F to G/F Level between Grid 6	0		27-Jun-16		17-Dec-16	0%	-173	769																																
PIW Phase 1																																									
Civil & Structural Interface with PIW At-Grade Road																																									
M+ North West Boundary																																									

Activity ID	Activity Name	Ori. Dur.	BaseLine Start	BaseLine Finish	Forecast / Actual Start	Forecast / Actual Finish	% Compl.	Finish Variance	Current Float	September 2016				October 2016				November 2016				December 2016				January 2017	
										04	11	18	25	02	09	16	23	30	06	13	20	27	04	11	18	25	01
IF2095	Submit Hoarding Design for BD Approval	30	01-Jun-16	30-Jun-16	30-Sep-16	05-Nov-16	0%	-105	481																		
IF2090	Take possession of the At-grade road footway within M45	0	01-Jun-16		30-Sep-16		0%	-121	598																		
Interface Car Park Utilities Works																											
IF2180	Construct U/G utilities connections from footway to ICP/SPS	70	24-Mar-16	05-Jul-16	06-Jun-16 A	25-Oct-16	50%	-92	29																		
IF2190	Complete pavement interface with At-grade road	10	08-Jul-16	22-Jul-16	26-Oct-16	05-Nov-16	0%	-88	29																		
IF2200	Remove hoarding along footway & vacate footway	5	23-Jul-16	29-Jul-16	07-Nov-16	11-Nov-16	0%	-87	29																		
Sewage Pump Station																											
IF2290	Construction of SPS Structure incl Building Services, ABWF and	361	11-Feb-16	22-Jun-17	20-May-16 A	30-Sep-17	12%	-66	-64																		
Water Main Interface with PIW																											
IF2370	Take possession of At-grade road within Portion M45	0	01-Jun-16		30-Sep-16		0%	-121	808																		
IF2380	Remove hoarding fixed to the sheet pile	5	03-Jun-16	10-Jun-16	30-Sep-16	06-Oct-16	0%	-97	654																		
IF2390	Install hoarding on road-side edge of footway (500mm clearanc	12	11-Jun-16	27-Jun-16	07-Oct-16	21-Oct-16	0%	-95	654																		
IF2400	Construct two DN150 DI fresh water, and one DN100 DI salt w	12	28-Jun-16	18-Jul-16	22-Oct-16	04-Nov-16	0%	-91	654																		
IF2410	Pressure test, Remove blank flange and make final connections	1	19-Jul-16	19-Jul-16	05-Nov-16	05-Nov-16	0%	-91	654																		
IF2420	Backfill pipes to the footway formation levels	1	21-Jul-16	21-Jul-16	07-Nov-16	07-Nov-16	0%	-90	654																		
IF2430	Complete WSD works for At-grade road (8Jul17)	0		21-Jul-16		07-Nov-16	0%	-109	809																		
Towngas Interface with PIW																											
IF2440	Take possession of At-grade road within Portion M44	0	01-Jun-16		30-Sep-16		0%	-121	682																		
IF2450	Trench excavation for gas pipe installation	5	03-Jun-16	10-Jun-16	30-Sep-16	06-Oct-16	0%	-97	549																		
IF2460	Construct portion of M+ & RDE building gas main (by Towngas)	130	11-Jun-16	13-Dec-16	07-Oct-16	15-Mar-17	0%	-73	549																		
Power Interface with PIW																											
IF2230	Take possession of the completed At-grade road pavement in M	0	01-Jun-16		30-Sep-16		0%	-121	679																		
IF2240	Excavate trenches for laying 11kV & 132kV cable by CLP	73	03-Jun-16	22-Sep-16	30-Sep-16	28-Dec-16	0%	-79	547																		
Telecoms Interface with PIW																											
IF2500	Take possession of the completed At-grade road pavement in M	0	01-Jun-16		30-Sep-16		0%	-121	341																		
IF2510	Excavate trenches for laying telecom ducts	5	03-Jun-16	10-Jun-16	30-Sep-16	06-Oct-16	0%	-97	276																		
IF2520	Lay ducts & leave connecting ends for PIW drawpit conststructio	72	11-Jun-16	27-Sep-16	07-Oct-16	03-Jan-17	0%	-79	276																		
Sewerage Interface with PIW																											
IF4010	Construct the DN375 sewer drain within Austin Road West and	50	29-Dec-15	29-Feb-16	05-Dec-15 A	25-Oct-16	90%	-193	665																		
IF4020	Vacate L08, L19 to Lyric foundation contractor	0		29-Feb-16		25-Oct-16	0%	-239	822																		
Seawater Intake & Discharge Pipes Interface with PIW																											
IF4100	Take Possession of M15,M16, M38 & M39	0	02-Sep-16		30-Sep-16		0%	-28	554																		
IF4110	Install two DN600 Seawater Intake mains, DN100 Chorinationz	120	02-Sep-16	09-Feb-17	30-Sep-16	25-Feb-17	0%	-14	445																		
Summary Facade Programme																											
Major Key Milestone Dates																											
SMS.1010	Start of Embeds Installation at M+ Podium	0			04-Nov-16		0%		813																		
SMS.1020	Start Bulk Production	0			07-Dec-16		0%		780																		
Pre-Construction, Procurements & Bulk Production																											
SUM.0050	Facade - Material Submission	205			22-Oct-15 A	31-Oct-16	80%		-13																		
SUM.0060	Facade - Visual Mock-Up	231			27-Oct-15 A	13-Dec-16	70%		33																		
SUM.0020	Facade - Shop Drawings	145			05-Mar-16 A	08-Dec-16	30%		85																		
SUM.0030	Facade - Embed BD Submission	204			14-Mar-16 A	06-Mar-17	50%		-26																		
SUM.0040	Facade - BD Submission	180			05-Jun-16 A	09-Jun-17	10%		182																		
SUM.0080	Facade - Performance Test Mock-Up	253			30-Sep-16	09-Aug-17	0%		96																		

Activity ID		Activity Name	Ori. Dur.	BaseLine Start	BaseLine Finish	Forecast / Actual Start		Forecast / Actual Finish		% Compl.	Finish Variance	Current Float
SUM.0025	Facade Door - Shop Drawings	77			30-Sep-16	04-Jan-17	0%		-34			
SUM.0070	Facade - Production Mock-Up	185			29-Oct-16	15-Jun-17	0%		28			
SUM.0090	Facade - Bulk Production & Fabrication	361			01-Dec-16	22-Feb-18	0%		-10			
M+ RC Structure												
M+ Podium												
SUM.0100	Podium - B1/Floor Slab Structure	215			15-Mar-16 A	20-Dec-16	40%		44			
SUM.0110	Podium - Grd/Flr Slab Structure	291			04-Nov-16	27-Oct-17	0%		5			
SUM.0120	Podium - 1st/Flr Slab Structure	276			05-Dec-16	10-Nov-17	0%		355			
SUM.0130	Podium - 1M/Flr Slab Structure	222			28-Dec-16	26-Sep-17	0%		-29			
Preliminaries												
Pre-Construction - Design & Procurements												
External Facade for M+ Podium (By Permasteelisa)												
Facade Shop Drawing Submission												
Podium Facade												
DS.2004.18	2nd Submission	6			30-Jul-16 A	08-Oct-16	90%		-44	2nd Submission, 2nd Submission		
DS.2004.20	Comment on 2nd Submission	11			11-Oct-16	22-Oct-16	0%		-44	Comment on 2nd Submission		
DS.2004.22	3rd Submission	6			24-Oct-16	29-Oct-16	0%		-44	3rd Submission		
DS.2004.24	Approval	12			31-Oct-16	12-Nov-16	0%		-44	Approval		
Glass Wall with T Mullion (Kinked & Straight B1/F & G/F),CW-01a to 03d												
DS.2004.28	Comment on 1st Submission	10			30-Jul-16 A	08-Oct-16	90%		-43	Comment on 1st Submission, Comment on 1st Submission		
DS.2004.30	2nd Submission	5			11-Oct-16	15-Oct-16	0%		-43	2nd Submission		
DS.2004.32	Comment on 2nd Submission	10			18-Oct-16	29-Oct-16	0%		-43	Comment on 2nd Submission		
DS.2004.34	3rd Submission	7			29-Oct-16	05-Nov-16	0%		-43	3rd Submission		
DS.2004.36	Approval	12			07-Nov-16	19-Nov-16	0%		-43	Approval		
Glass Wall with Precast Mullion & Caremic Mullion,CW-04-05d and 07												
DS.2004.38	1st Submission	10			30-May-16 ^	07-Oct-16	70%		-30	1st Submission, 1st Submission		
DS.2004.40	Comment on 1st Submission	10			08-Oct-16 ^	20-Oct-16	0%		-30	Comment on 1st Submission		
DS.2004.42	2nd Submission	6			21-Oct-16	27-Oct-16	0%		-30	2nd Submission		
DS.2004.44	Comment on 2nd Submission	11			29-Oct-16	10-Nov-16	0%		-30	Comment on 2nd Submission		
DS.2004.46	3rd Submission	6			11-Nov-16	17-Nov-16	0%		-30	3rd Submission		
DS.2004.48	Approval	12			18-Nov-16	01-Dec-16	0%		-30	Approval		
Podium Ceramic Concrete Tubes & with Perforated Cladding, FAC-CW-07												
DS.2004.50	1st Submission	10			27-May-16 ^	07-Oct-16	30%		-23	1st Submission, 1st Submission		
DS.2004.52	Comment on 1st Submission	10			11-Oct-16	21-Oct-16	0%		-23	Comment on 1st Submission		
DS.2004.54	2nd Submission	6			22-Oct-16	28-Oct-16	0%		-23	2nd Submission		
DS.2004.56	Comment on 2nd Submission	11			29-Oct-16	10-Nov-16	0%		-23	Comment on 2nd Submission		
DS.2004.58	3rd Submission	6			11-Nov-16	17-Nov-16	0%		-23	3rd Submission		
DS.2004.60	Approval	12			18-Nov-16	01-Dec-16	0%		-23	Approval		
Garden Gallery Ceramic Cladding & Ceiling,CE-03a,03b,03c												
DS.2004.62	1st Submission	10			17-Apr-16 A	14-Oct-16	90%		38	1st Submission, 1st Submission		
DS.2004.64	Comment on 1st Submission	11			15-Oct-16	28-Oct-16	0%		38	Comment on 1st Submission		
DS.2004.66	2nd Submission	6			28-Oct-16	04-Nov-16	0%		38	2nd Submission		
DS.2004.68	Comment on 2nd Submission	11			04-Nov-16	17-Nov-16	0%		38	Comment on 2nd Submission		

Activity ID	Activity Name	Ori. Dur.	BaseLine Start	BaseLine Finish	Forecast / Actual Start	Forecast / Actual Finish	% Compl.	Finish Variance	Current Float	September 2016				October 2016				November 2016				December 2016				January 2017	
										04	11	18	25	02	09	16	23	30	06	13	20	27	04	11	18	25	01
DS.2004.70	3rd Submission	6			17-Nov-16	24-Nov-16	0%		38																		
DS.2004.72	Approval	12			24-Nov-16	08-Dec-16	0%		38																		
L3 Storefront,CW-08a,08b																											
DS.2004.78	2nd Submission	5			22-Jul-16 A	04-Oct-16	70%		111																		
DS.2004.80	Comment on 2nd Submission	11			05-Oct-16	18-Oct-16	0%		111																		
DS.2004.82	3rd Submission	6			19-Oct-16	25-Oct-16	0%		111																		
DS.2004.84	Approval	12			26-Oct-16	08-Nov-16	0%		111																		
Strip Glazing at Skylight Gallery L3 & Plaza Skylight,CW10,SK-01,02																											
DS.2004.88	Comment on 1st Submission	10			22-Jul-16 A	08-Oct-16	90%		45																		
DS.2004.90	2nd Submission	5			11-Oct-16	15-Oct-16	0%		45																		
DS.2004.92	Comment on 2nd Submission	11			18-Oct-16	29-Oct-16	0%		45																		
DS.2004.94	3rd Submission	6			31-Oct-16	05-Nov-16	0%		85																		
DS.2004.96	Approval	12			07-Nov-16	19-Nov-16	0%		85																		
Shop Drawings Metal Cladding FAC-LV-01b (Additional Scope)																											
DS.2004.106	1st Submission	11			30-Sep-16*	15-Oct-16	0%		50																		
DS.2004.116	Comment on 1st Submission	12			15-Oct-16	29-Oct-16	0%		50																		
DS.2004.126	2nd Submission	5			29-Oct-16	04-Nov-16	0%		50																		
DS.2004.136	Comment on 2nd Submission	11			04-Nov-16	17-Nov-16	0%		50																		
DS.2004.146	3rd Submission	6			17-Nov-16	24-Nov-16	0%		50																		
DS.2004.156	Approval	11			24-Nov-16	07-Dec-16	0%		50																		
Facade Doors - Shop Drawings Submission (Additional Works)																											
Facade Door Package # 1: Glazed Doors Bet Ceramic Concrete Mullion (Total = 53 nos)																											
DS.2004.166	Facade Door Package # 1 - 1st Submission	12			30-Sep-16*	17-Oct-16	0%		-32																		
DS.2004.176	Facade Door Package # 1 - Comment on 1st Submission	12			17-Oct-16	31-Oct-16	0%		-32																		
DS.2004.186	Facade Door Package # 1 - 2nd Submission	17			31-Oct-16	19-Nov-16	0%		-32																		
DS.2004.196	Facade Door Package # 1 - Comment on 2nd Submission	10			19-Nov-16	01-Dec-16	0%		-32																		
DS.2004.206	Facade Door Package # 1 - 3rd Submission	12			01-Dec-16	15-Dec-16	0%		-32																		
DS.2004.216	Facade Door Package # 1 - Approval	12			15-Dec-16	31-Dec-16	0%		-32																		
Facade Door Package # 2: Sliding Door in L3 Storefront (Total = 4 nos automatic)																											
DS.2004.226	Facade Door Package # 2 - 1st Submission	12			30-Sep-16*	15-Oct-16	0%		-32																		
DS.2004.236	Facade Door Package # 2 - Comment on 1st Submission	12			17-Oct-16	29-Oct-16	0%		-32																		
DS.2004.246	Facade Door Package # 2 - 2nd Submission	18			31-Oct-16	21-Nov-16	0%		-32																		
DS.2004.256	Facade Door Package # 2 - Comment on 2nd Submission	11			21-Nov-16	03-Dec-16	0%		-32																		
DS.2004.266	Facade Door Package # 2 - 3rd Submission	11			03-Dec-16	16-Dec-16	0%		-32																		
DS.2004.276	Facade Door Package # 2 - Approval	11			16-Dec-16	31-Dec-16	0%		-32																		
Facade Door Package # 3: Swing Door at L3 Cafe (Total = 1 no Manual)																											
DS.2004.286	Facade Door Package # 3 - 1st Submission	12			30-Sep-16*	15-Oct-16	0%		-21																		
DS.2004.296	Facade Door Package # 3 - Comment on 1st Submission	12			17-Oct-16	29-Oct-16	0%		-21																		
DS.2004.306	Facade Door Package # 3 - 2nd Submission	12			31-Oct-16	14-Nov-16	0%		-21																		
DS.2004.316	Facade Door Package # 3 - Comment on 2nd Submission	12			14-Nov-16	28-Nov-16	0%		-21																		
DS.2004.326	Facade Door Package # 3 - 3rd Submission	5			28-Nov-16	03-Dec-16	0%		-21																		
DS.2004.336	Facade Door Package # 3 - Approval	11			03-Dec-16	16-Dec-16	0%		-21																		
Facade Door Package # 4: Swing Door Mounted in GW with T-Mullion (Total = 29 nos)																											
DS.2004.346	Facade Door Package # 4 - 1st Submission	14			30-Sep-16*	19-Oct-16	0%		-32																		

Activity ID	Activity Name	Ori. Dur.	BaseLine Start	BaseLine Finish	Forecast / Actual Start	Forecast / Actual Finish	% Compl.	Finish Variance	Current Float	September 2016				October 2016				November 2016				December 2016				January 2017	
										04	11	18	25	02	09	16	23	30	06	13	20	27	04	11	18	25	01
	DS.2004.356 Facade Door Package # 4 - omment on 1st Submission	12			19-Oct-16	02-Nov-16	0%		-32																		
	DS.2004.366 Facade Door Package # 4 - 2nd Submission	14			02-Nov-16	18-Nov-16	0%		-32																		
	DS.2004.376 Facade Door Package # 4 - Comment on 2nd Submission	13			18-Nov-16	03-Dec-16	0%		-32																		
	DS.2004.386 Facade Door Package # 4 - 3rd Submission	10			03-Dec-16	15-Dec-16	0%		-32																		
	DS.2004.396 Facade Door Package # 4 - Approval	12			15-Dec-16	31-Dec-16	0%		-32																		
Facade Door Package # 5: Large Double Door at B1/F Transformaer Room (Total = 1 no manual)																											
	DS.2004.406 Facade Door Package # 5 - 1st Submission	14			30-Sep-16*	18-Oct-16	0%		-22																		
	DS.2004.416 Facade Door Package # 5 - Comment on 1st Submission	12			19-Oct-16	01-Nov-16	0%		-22																		
	DS.2004.426 Facade Door Package # 5 - 2nd Submission	11			02-Nov-16	15-Nov-16	0%		-22																		
	DS.2004.436 Facade Door Package # 5 - Comment on 2nd Submission	10			15-Nov-16	26-Nov-16	0%		-22																		
	DS.2004.446 Facade Door Package # 5 - 3rd Submission	6			26-Nov-16	03-Dec-16	0%		-22																		
	DS.2004.456 Facade Door Package # 5 - Approval	12			03-Dec-16	17-Dec-16	0%		-22																		
Facade Door Package # 6: B1/F Exit Doors (Total = 7 nos manual)																											
	DS.2004.466 Facade Door Package # 6 - 1st Submission	13			30-Sep-16*	18-Oct-16	0%		-22																		
	DS.2004.476 Facade Door Package # 6 - Comment on 1st Submission	10			18-Oct-16	29-Oct-16	0%		-22																		
	DS.2004.486 Facade Door Package # 6 - 2nd Submission	12			29-Oct-16	12-Nov-16	0%		-22																		
	DS.2004.496 Facade Door Package # 6 - Comment on 2nd Submission	12			12-Nov-16	26-Nov-16	0%		-22																		
	DS.2004.506 Facade Door Package # 6 - 3rd Submission	6			26-Nov-16	03-Dec-16	0%		-22																		
	DS.2004.516 Facade Door Package # 6 - Approval	12			03-Dec-16	17-Dec-16	0%		-22																		
Facade Door Package # 7: Garden Gallery Door (Total = 2 nos manual)																											
	DS.2004.526 Facade Door Package # 7 - 1st Submission	12			30-Sep-16*	15-Oct-16	0%		-20																		
	DS.2004.536 Facade Door Package # 7 - Comment on 1st Submission	12			17-Oct-16	29-Oct-16	0%		-20																		
	DS.2004.546 Facade Door Package # 7 - 2nd Submission	12			31-Oct-16	14-Nov-16	0%		-20																		
	DS.2004.556 Facade Door Package # 7 - Comment on 2nd Submission	11			14-Nov-16	26-Nov-16	0%		-20																		
	DS.2004.566 Facade Door Package # 7 - 3rd Submission	6			26-Nov-16	03-Dec-16	0%		-20																		
	DS.2004.576 Facade Door Package # 7 - Approval	10			03-Dec-16	15-Dec-16	0%		-20																		
Facade Door Package # 8: Door Loacted at Metal Claddings (Total = 20 nos manual)																											
	DS.2004.586 Facade Door Package # 8 - 1st Submission	11			30-Sep-16*	15-Oct-16	0%		-14																		
	DS.2004.596 Facade Door Package # 8 - Comment on 1st Submission	12			15-Oct-16	29-Oct-16	0%		-14																		
	DS.2004.606 Facade Door Package # 8 - 2nd Submission	6			29-Oct-16	05-Nov-16	0%		-14																		
	DS.2004.616 Facade Door Package # 8 - Comment on 2nd Submission	11			05-Nov-16	18-Nov-16	0%		-14																		
	DS.2004.626 Facade Door Package # 8 - 3rd Submission	6			18-Nov-16	25-Nov-16	0%		-14																		
	DS.2004.636 Facade Door Package # 8 - Approval	11			25-Nov-16	08-Dec-16	0%		-14																		
Facade Door Package # 9: G/F Access Door in Ceramic Tube (Total = 8 nos)																											
	DS.2004.646 Facade Door Package # 9 - 1st Submission	12			30-Sep-16*	15-Oct-16	0%		-21																		
	DS.2004.656 Facade Door Package # 9 - Comment on 1st Submission	12			17-Oct-16	31-Oct-16	0%		-21																		
	DS.2004.666 Facade Door Package # 9 - 2nd Submission	12			31-Oct-16	14-Nov-16	0%		-21																		
	DS.2004.676 Facade Door Package # 9 - Comment on 2nd Submission	11			14-Nov-16	26-Nov-16	0%		-21																		
	DS.2004.686 Facade Door Package # 9 - 3rd Submission	6			26-Nov-16	03-Dec-16	0%		-21																		
	DS.2004.696 Facade Door Package # 9 - Approval	11			03-Dec-16	16-Dec-16	0%		-21																		
Facade Door Package # 10: B1/F Carriageway Access Panel / Doors (Total = 24 nos)																											
	DS.2004.706 Facade Door Package # 10 - 1st Submission	12			30-Sep-16*	15-Oct-16	0%		-34																		
	DS.2004.716 Facade Door Package # 10 - Comment on 1st Submission	11			17-Oct-16	29-Oct-16	0%		-34																		
	DS.2004.726 Facade Door Package # 10 - 2nd Submission	18			29-Oct-16	19-Nov-16	0%		-34																		

[illegible]

Activity ID	Activity Name	Ori. Dur.	BaseLine Start	BaseLine Finish	Forecast / Actual Start	Forcast / Actual Finish	% Compl.	Finish Variance	Current Float	September 2016				October 2016				November 2016				December 2016				January 2017			
										04	11	18	25	02	09	16	23	30	06	13	20	27	04	11	18	25	01	08	
Podium Precast Unitized Facade																													
DS.2016.32	1st BD Submission to Consultant	9			30-Sep-16*	12-Oct-16	0%		27																				
DS.2016.34	Comment on 1st Submission	12			13-Oct-16	26-Oct-16	0%		27																				
DS.2016.36	2nd Submission	9			27-Oct-16	05-Nov-16	0%		27																				
DS.2016.38	Comment on 2nd Submission	11			07-Nov-16	18-Nov-16	0%		27																				
DS.2016.40	3rd Submission	11			19-Nov-16	01-Dec-16	0%		27																				
DS.2016.42	Comment on 3rd Submission	11			02-Dec-16	14-Dec-16	0%		27																				
DS.2016.44	RSE Submitted to BD	3			15-Dec-16	19-Dec-16	0%		27																				
DS.2016.46	BD Submission & Approval	60			19-Dec-16	06-Mar-17	0%		27																				
Glass Wall with T Mullion (Kinked & Straight B1/F & G/F),CW-01a-03d																													
DS.2016.52	1st BD Submission to Consultant	10			14-Nov-16	24-Nov-16	0%		21																				
DS.2016.54	Comment on 1st Submission	11			25-Nov-16	08-Dec-16	0%		21																				
DS.2016.56	2nd Submission	10			08-Dec-16	20-Dec-16	0%		21																				
DS.2016.58	Comment on 2nd Submission	12			20-Dec-16	06-Jan-17	0%		21																				
Glass Wall with Precast Mullion & Ceramic Mullion,CW-04 to 05d and 07																													
DS.2016.72	1st BD Submission to Consultant	10			30-Sep-16*	13-Oct-16	0%		47																				
DS.2016.74	Comment on 1st Submission	11			14-Oct-16	27-Oct-16	0%		47																				
DS.2016.76	2nd Submission	11			28-Oct-16	09-Nov-16	0%		47																				
DS.2016.78	Comment on 2nd Submission	12			10-Nov-16	23-Nov-16	0%		47																				
DS.2016.80	3rd Submission	9			24-Nov-16	03-Dec-16	0%		47																				
DS.2016.82	Comment on 3rd Submission	11			05-Dec-16	16-Dec-16	0%		47																				
DS.2016.84	RSE Submitted to BD	3			17-Dec-16	20-Dec-16	0%		47																				
DS.2016.86	BD Submission & Approval	60			22-Dec-16	07-Mar-17	0%		47																				
Podium Ceramic Concrete Tubes & with Perforated Cladding,CE01a,01b,02a																													
DS.2016.092	1st BD Submission to Consultant	9			11-Nov-16*	22-Nov-16	0%		29																				
DS.2016.094	Comment on 1st Submission	12			22-Nov-16	06-Dec-16	0%		29																				
DS.2016.096	2nd Submission	10			06-Dec-16	17-Dec-16	0%		29																				
DS.2016.098	Comment on 2nd Submission	12			17-Dec-16	04-Jan-17	0%		29																				
Garden Gallery Ceramic Cladding & Ceiling,CE-3a,3b,3c																													
DS.2016.112	1st BD Submission to Consultant	9			17-Nov-16*	28-Nov-16	0%		108																				
DS.2016.114	Comment on 1st Submission	11			28-Nov-16	10-Dec-16	0%		108																				
DS.2016.116	2nd Submission	11			10-Dec-16	24-Dec-16	0%		108																				
DS.2016.118	Comment on 2nd Submission	11			24-Dec-16	09-Jan-17	0%		108																				
L3 Storefront,CW-08a,08b																													
DS.2016.132	1st BD Submission to Consultant	10			05-Oct-16	17-Oct-16	0%		217																				
DS.2016.134	Comment on 1st Submission	12			17-Oct-16	31-Oct-16	0%		217																				
DS.2016.136	2nd Submission	10			31-Oct-16	11-Nov-16	0%		217																				
DS.2016.138	Comment on 2nd Submission	11			11-Nov-16	24-Nov-16	0%		217																				
DS.2016.140	3rd Submission	10			24-Nov-16	06-Dec-16	0%		217																				
DS.2016.142	Comment on 3rd Submission	12			06-Dec-16	20-Dec-16	0%		217																				
DS.2016.144	RSE Submitted to BD	3			20-Dec-16	24-Dec-16	0%		217																				
DS.2016.146	BD Submission & Approval	60			24-Dec-16	10-Mar-17	0%		217																				
Strip Glazing at Skylight Gallery L3 & Plaza Skylight,CW-10,SK-01,02																													
DS.2016.152	1st BD Submission to Consultant	10			01-Nov-16*	11-Nov-16	0%		156																				

Prepared on 13-Oct-16			(3MRP-12) Three Months Rolling Programme Status at 30 Sept 2016																Page 8 of 27								
Activity ID	Activity Name	Ori. Dur.	BaseLine Start	BaseLine Finish	Forecast / Actual Start	Forecast / Actual Finish	% Compl.	Finish Variance	Current Float	September 2016				October 2016				November 2016				December 2016				January 2017	
										04	11	18	25	02	09	16	23	30	06	13	20	27	04	11	18	25	01
DS.2016.154	Comment on 1st Submission	12			12-Nov-16	25-Nov-16	0%		156																		
DS.2016.156	2nd Submission	10			25-Nov-16	07-Dec-16	0%		156																		
DS.2016.158	Comment on 2nd Submission	11			08-Dec-16	22-Dec-16	0%		156																		
DS.2016.160	3rd Submission	10			22-Dec-16	05-Jan-17	0%		156																		
Material Submission & Approval																											
Material Sample Submission																											
DS.2018.28	Facade Door - Glass sample submission	36			06-Dec-16	20-Jan-17	0%		-34																		
DS.2018.38	Facade Door - Steel Frame & Ironmogery sample submission	36			06-Dec-16	20-Jan-17	0%		-34																		
Material Approval																											
DS.2020.10	Lighting Submission , conduits , trucking , wiring , junction box	11			20-Dec-15 A	31-Oct-16	80%		23																		
DS.2020.14	Low-e Glass Samples	208			21-Dec-15 A	31-Oct-16	90%		-13																		
DS.2020.16	Reflective Glass (Glass Wall With T- Mullion)	208			21-Dec-15 A	31-Oct-16	90%		-16																		
DS.2020.12	Approval for Terracotta Colour	11			27-Dec-15 A	31-Oct-16	80%		-16																		
Visual Mock Up																											
Tower Facade Panel Visual Mock Up																											
Terracotta																											
DS.2021.22	Production of Precast Panel & Delivery to site	37			23-Aug-16 A	08-Oct-16	90%		-22																		
Installation																											
DS.2021.24	Handover of Working Area	0			11-Oct-16		0%		-22																		
DS.2021.26	Installation on Mock Up	2			11-Oct-16	12-Oct-16	0%		-22																		
DS.2021.28	Glazing and Sealant application	3			13-Oct-16	15-Oct-16	0%		-22																		
DS.2021.30	Inspection & Approval of Visual Mock Up	11			17-Oct-16	28-Oct-16	0%		-22																		
Concrete Shell Mock Up																											
Podium Facade Panel Visual Mock Up																											
Terracotta																											
DS.2021.52	Production & delivery of Terracotta to Precast Factory	12			23-Mar-16 A	08-Oct-16	90%		-29																		
DS.2021.54	Production of Precast Panel & Delivery	40			11-Oct-16	25-Nov-16	0%		-29																		
Installation																											
DS.2021.56	Handover of Working Area	0			26-Nov-16		0%		-29																		
DS.2021.58	Installation on Mock Up	4			26-Nov-16	30-Nov-16	0%		-29																		
DS.2021.59	Inspection & Approval of Visual Mock Up	11			01-Dec-16	13-Dec-16	0%		-29																		
Ground Floor Ceramic Cladding , Glass Wall with Ceramic Mullion & Concrete Mullion																											
Visual Mock Up Drawing Submission																											
DS.2021.77	Drawing Approval	13			30-Sep-16	17-Oct-16	0%		-10																		
Ordering & Production of Concrete Shell Mock Up Material																											
DS.2021.78	Coated Glass production	60			02-Mar-16 A	15-Oct-16	90%		-1																		
Terracotta																											
DS.2021.88	Production & delivery of Terracotta to Precast Factory	12			24-Mar-16 A	08-Oct-16	90%		-34																		
DS.2021.90	Production of Precast Panel & Delivery	30			11-Oct-16	14-Nov-16	0%		-34																		
Installation																											
DS.2021.94	Installation on Frame	8			15-Nov-16	23-Nov-16	0%		-34																		
DS.2021.96	Glazing & Sealant Application	2			24-Nov-16	25-Nov-16	0%		-34																		
DS.2021.97	Inspection & Approval of Visual Mock Up	10			25-Nov-16	07-Dec-16	0%		-34																		
Hybrid Mock Up																											

Activity ID	Activity Name	Ori. Dur.	BaseLine Start	BaseLine Finish	Forecast / Actual Start	Forecast / Actual Finish	% Compl.	Finish Variance	Current Float	September 2016				October 2016				November 2016				December 2016				January 2017	
										04	11	18	25	02	09	16	23	30	06	13	20	27	04	11	18	25	01
Glass Wall with T-Mullion,CW-02a,02b																											
Ordering & Production of Hybrid Mock Up Mateial																											
DS.2021.118	Production of Steel Frame and Alum Cladding	30			02-Mar-16 A	04-Oct-16	90%		-26	Production of Steel Frame and Alum Cladding, Production of Steel Frame and Alum Cladding																	
Installation of Mock Up Sample																											
DS.2021.124	Installation of Steel Frame and Flashing	10			30-Sep-16	13-Oct-16	0%		-26	Installation of Steel Frame and Flashing																	
DS.2021.126	Glazing	2			14-Oct-16	15-Oct-16	0%		-26	Glazing																	
DS.2021.128	Application of Structural Sealant	2			15-Oct-16	18-Oct-16	0%		-26	Application of Structural Sealant																	
DS.2021.98	Inspection & Approval of Visual Mock Up	10			20-Oct-16	01-Nov-16	0%		-26	Inspection & Approval of Visual Mock Up																	
L3 Storefront,CW-08																											
Shopdrawing Submission																											
DS.2021.146	Approval of Visual Mock Up Drawing	13			11-May-16 A	05-Oct-16	90%		66	Approval of Visual Mock Up Drawing, Approval of Visual Mock Up Drawing																	
Ordering & Production of Hybrid Mock Up Mateial																											
DS.2021.152	Production of Steel Frame and Alum Cladding	36			04-Mar-16 A	18-Oct-16	80%		51	Production of Steel Frame and Alum Cladding, Production of Steel Frame and Alum Cladding																	
Installation of Mock Up Sample																											
DS.2021.158	Installation of Steel Frame and Flashing	6			19-Oct-16	25-Oct-16	0%		51	Installation of Steel Frame and Flashing																	
DS.2021.160	Install Glazing	2			25-Oct-16	27-Oct-16	0%		51	Install Glazing																	
DS.2021.162	Application of Structural Sealant	2			27-Oct-16	28-Oct-16	0%		51	Application of Structural Sealant																	
DS.2021.163	Inspection & Approval of Visual Mock Up	11			31-Oct-16	12-Nov-16	0%		51	Inspection & Approval of Visual Mock Up																	
Garden Galley Visual Mock Up,ce-03a,03c																											
Visual Mock Up Drawing Submission																											
DS.2021.172	Approval on Shop Drawings	10			30-Sep-16*	13-Oct-16	0%		45	Approval on Shop Drawings																	
Terracotta																											
DS.2021.176	Production of Terracotta	24			11-Oct-16	07-Nov-16	0%		45	Production of Terracotta																	
DS.2021.178	Delivery of Terracotta to Precast Factory	1			18-Nov-16	18-Nov-16	0%		45	Delivery of Terracotta to Precast Factory																	
Installation																											
DS.2021.187	Delivery of ceramic precast mullion to site	2			19-Nov-16	21-Nov-16	0%		45	Delivery of ceramic precast mullion to site																	
DS.2021.188	Installation of Terracotta on Mock-up	6			23-Nov-16	29-Nov-16	0%		45	Installation of Terracotta on Mock-up																	
Production Mock Up																											
Tower Precast Facade Panels w/ Percast Concrete , Terracotta, lighting & Curtain Wall																											
Tower Facade - Ordering & Production of Material																											
DS.2022.4	Sealant Ordering (Typical two weeks time, tailor made need th	12			29-Oct-16*	11-Nov-16	0%		90	Sealant Ordering (Typical two weeks time, tailor made need th																	
Tower Facade - Glass Production & Fabrication																											
DS.2022.6	Coated Glass Production	48			29-Oct-16*	24-Dec-16	0%		30	Coated Glass Production																	
DS.2022.8	Fabrication of Insulated Glass Panel	13			27-Dec-16	11-Jan-17	0%		30	Fabrication of Insulated Glass Panel																	
Tower Facade - Curtain Wall glazed panel production and Fabricatioin																											
DS.2022.12	Die Making	21			14-Nov-16*	07-Dec-16	0%		33	Die Making																	
DS.2022.16	Aluminium Extrusion Production	12			10-Dec-16	24-Dec-16	0%		33	Aluminium Extrusion Production																	
DS.2022.14	PVF2 Paint Ordering	12			10-Dec-16	24-Dec-16	0%		33	PVF2 Paint Ordering																	
Tower Facade - Terracotta																											
DS.2022.22	Ordering of Terracotta	10			29-Oct-16	10-Nov-16	0%		56	Ordering of Terracotta																	
DS.2022.24	Die Making of Terracotta	45			10-Nov-16	05-Jan-17	0%		56	Die Making of Terracotta																	
DS.2022.26	Productioin & delivery of Terracotta Mockup Sample	45			24-Nov-16	19-Jan-17	0%		56	Productioin & delivery of Terracotta Mockup Sample																	
Tower Facade - Precast Concrete Facade																											
Tower Facade - Precast Facade Die Making																											

Prepared on 13-Oct-16			(3MRP-12) Three Months Rolling Programme Status at 30 Sept 2016																Page 10 of 27								
Activity ID	Activity Name	Ori. Dur.	BaseLine Start	BaseLine Finish	Forecast / Actual Start	Forecast / Actual Finish	% Compl.	Finish Variance	Current Float	September 2016				October 2016				November 2016				December 2016				January 2017	
										04	11	18	25	02	09	16	23	30	06	13	20	27	04	11	18	25	01
DS.2022.28	Tower Facade Precast Concrete Mould Making	45			29-Oct-16	20-Dec-16	0%		34																		Tower Facade P
DS.2022.30	Concreting of Precast Concrete	18			22-Dec-16	13-Jan-17	0%		34																		
Podium Precast Facade Panel w/ Percast Concrete , Terracotta & Curtain Wall																											
Podium Facade - Ordering & Production of Material																											
Podium Facade - Glass Production & Fabrication																											
DS.2022.42	Sealant Ordering (Typical two weeks time, tailor made need th	12			14-Dec-16*	29-Dec-16	0%		24																		Sealant O
DS.2022.44	Coated Glass Production	48			14-Dec-16	14-Feb-17	0%		-24																		
Podium Facade - Curtain Wall glazed panel production and Fabricatioin																											
DS.2022.48	Die Making	48			14-Dec-16	14-Feb-17	0%		-29																		
DS.2022.46	PVF2 Paint Ordering	12			14-Dec-16	29-Dec-16	0%		19																		PVF2 Pai
Podium Facade - Terracotta																											
DS.2022.58	Ordering of Terracotta	10			14-Nov-16	24-Nov-16	0%		-44																		Ordering of Terracotta
DS.2022.60	Die Making of Terracotta	45			25-Nov-16	19-Jan-17	0%		-44																		
Podium Facade - Precast Concrete Facade																											
Podium Facade - Percast Facade Die Making																											
DS.2022.64	Percast Concrete Mould Making	45			14-Dec-16	10-Feb-17	0%		-12																		
Kinked Glass Wall with T Mullion and reflective Glass at B1,CW-02b																											
Kinked Glass Wall with T Mullion - Ordering & Production of Material																											
Kinked Glass Wall with T Mullion - Glass Production & Fabrication																											
DS.2022.78	Coated Glass Production	48			01-Nov-16	29-Dec-16	0%		-21																		Coated G
DS.2022.76	Sealant Ordering (Typical two weeks time, tailor made need th	12			21-Nov-16*	03-Dec-16	0%		10																		Sealant Ordering (Typical tw
DS.2022.80	Fabrication of Insulated Glass Panel	12			29-Dec-16	13-Jan-17	0%		-21																		
Kinked Glass Wall with T Mullion - Curtain Wall glazed panel production and Fabricatioin																											
DS.2022.86	Order of Paint	24			01-Nov-16	29-Nov-16	0%		10																		Order of Paint
DS.2022.84	PVF2 Paint Ordering	12			01-Nov-16	15-Nov-16	0%		22																		PVF2 Paint Ordering
DS.2022.82	Die Making	48			21-Nov-16	18-Jan-17	0%		-43																		
DS.2022.90	Fabrication of T Steel Mullions	17			29-Nov-16	17-Dec-16	0%		10																		Fabrication of T St
DS.2022.93	Painting of Steel Mullion	6			19-Dec-16	27-Dec-16	0%		10																		Painting o
Glass Wall with Percast Concrete Mullion,CW-07																											
Glass Wall with PC Mullion - Ordering & Production of Material																											
Glass Production & Fabrication																											
DS.2022.104	Sealant Ordering (Typical two weeks time, tailor made need th	12			07-Dec-16*	22-Dec-16	0%		124																		Sealant Orderi
DS.2022.106	Coated Glass Production	48			07-Dec-16*	08-Feb-17	0%		76																		
Glass Wall glazed panel production and Fabricatioin																											
DS.2022.112	Die Making	48			07-Dec-16*	08-Feb-17	0%		71																		
DS.2022.110	PVF2 Paint Ordering	12			07-Dec-16*	22-Dec-16	0%		119																		PVF2 Paint Ord
Precast Concrete Mullion																											
DS.2022.120	Production Precast Concrete Moulding	24			07-Dec-16*	07-Jan-17	0%		91																		P
L3 Storefront,CW-08																											
L3 Storefront - Ordering & Production of Material																											
Glass Production & Fabrication																											
DS.2022.130	Sealant Ordering (Typical two weeks time, tailor made need th	12			12-Nov-16	26-Nov-16	0%		161																		Sealant Ordering (Typical two wee
DS.2022.132	Coated Glass Production	48			12-Nov-16	11-Jan-17	0%		113																		
Glass Wall glazed panel production and Fabricatioin																											

Activity ID	Activity Name	Ori. Dur.	BaseLine Start	BaseLine Finish	Forecast / Actual Start	Forecast / Actual Finish	% Compl.	Finish Variance	Current Float	September 2016				October 2016				November 2016				December 2016				January 2017	
										04	11	18	25	02	09	16	23	30	06	13	20	27	04	11	18	25	01
DS.2022.138	Die Making	48			12-Nov-16	11-Jan-17	0%		107																		
DS.2022.136	PVF2 Paint Ordering	12			12-Nov-16	26-Nov-16	0%		155																		
G/F Facade - Precast Concrete Tubes , Ceramic Rows Rainscreen Cladding, Ceramic Precast Mull																											
G/F Facade - Ordering & Production of Material																											
DS.2022.152	Sealant Ordering (Typical two weeks time, tailor made need th	12			07-Dec-16*	22-Dec-16	0%		24																		
G/F Facade - Glass Production & Fabrication																											
DS.2022.154	Coated Glass producion	48			07-Dec-16	08-Feb-17	0%		-13																		
G/F Facade - Curtain Wall glazed panel production and Fabricatioin																											
DS.2022.158	PVF2 Paint Ordering	12			02-Dec-16	15-Dec-16	0%		34																		
DS.2022.160	Die Making	48			07-Dec-16	08-Feb-17	0%		-18																		
G/F Facade - Terracotta																											
DS.2022.168	Ordering of Terracotta	11			07-Dec-16*	20-Dec-16	0%		-34																		
DS.2022.170	Die Making of Terracotta	49			29-Dec-16	01-Mar-17	0%		-34																		
G/F Facade - Precast Concrete Facade																											
G/F Facade - Precast Facade Die Making																											
DS.2022.171	Percast Concrete Mould Making	50			07-Dec-16*	10-Feb-17	0%		-27																		
Garden Gallery,CE-03a,03c																											
Garden Gallery - Ordering & Production of Material																											
Garden Gallery - Terracotta																											
DS.2022.186	Ordering of Terracotta	11			08-Dec-16	22-Dec-16	0%		38																		
DS.2022.188	Die Making of Terracotta	36			22-Dec-16	08-Feb-17	0%		38																		
Performance Testing Mock Up																											
Tower Precast Facade Panels w/ Precast Concrete , Terracotta, lighting & Curtain Wall																											
Tower Facade - Drawing Submission																											
DS.2026.2	1st Shop Drawing Submission	11			30-Sep-16	15-Oct-16	0%		-15																		
DS.2026.4	1st Shop Drawing Comment	11			15-Oct-16	28-Oct-16	0%		-15																		
DS.2026.6	2nd Shop Drawing Submission	11			28-Oct-16	10-Nov-16	0%		-15																		
DS.2026.8	Approval of Performance Mock Up Drawing	11			10-Nov-16	23-Nov-16	0%		-15																		
Tower Facade - Submission of Testing Proposal																											
DS.2026.10	1st Submission of Testing Proposal	11			23-Nov-16	06-Dec-16	0%		276																		
DS.2026.12	1st comment	6			07-Dec-16	13-Dec-16	0%		276																		
DS.2026.14	2nd Submission of Testing Proposal	6			13-Dec-16	20-Dec-16	0%		276																		
DS.2026.16	Approval of Testing Proposal	6			20-Dec-16	28-Dec-16	0%		276																		
Tower Facade - Ordering & Production of Material																											
DS.2026.18	Sealant Ordering (Typical two weeks time, tailor made need th	12			29-Oct-16	11-Nov-16	0%		66																		
Tower Facade - Glass Production & Fabrication																											
DS.2026.26	Coated Glass Production	48			23-Nov-16	21-Jan-17	0%		-15																		
Tower Facade - Curtain Wall glazed panel production and Fabricatioin																											
DS.2026.22	Die Making	48			29-Oct-16	24-Dec-16	0%		2																		
DS.2026.24	PVF2 Paint Ordering	12			29-Oct-16*	11-Nov-16	0%		50																		
DS.2026.28	Aluminium Extrusion Production	12			27-Dec-16	10-Jan-17	0%		2																		
Tower Facade - Terracotta																											
DS.2026.36	Ordering of Terracotta	11			29-Oct-16	11-Nov-16	0%		-22																		
DS.2026.38	Die Making of Terracotta	24			11-Nov-16	09-Dec-16	0%		-22																		

Activity ID	Activity Name	Ori. Dur.	BaseLine Start	BaseLine Finish	Forecast / Actual Start	Forcast / Actual Finish	% Compl.	Finish Variance	Current Float	September 2016				October 2016				November 2016				December 2016				January 2017	
										04	11	18	25	02	09	16	23	30	06	13	20	27	04	11	18	25	01
DS.2026.40	Productionioin & delivery of Terracotta Mockup Sample	24			09-Dec-16	10-Jan-17	0%		-22																		
Tower Facade - Precast Concrete Facade																											
Tower Facade - Precast Facade Die Making																											
DS.2026.42	Percast Concrete Mould Making	96			30-Sep-16	25-Jan-17	0%		-36																		
Tower Facade - Installation																											
DS.2026.50	Erection of Testing Chamber	32			03-Oct-16*	09-Nov-16	0%		66																		
DS.2026.52	Bracket Installation	8			10-Nov-16	18-Nov-16	0%		66																		
Podium Facade Wall Performance Testing																											
Podium Facade - Drawing Submission																											
DS.2026.58	1st PMU Drawing Submission	11			24-Oct-16	05-Nov-16	0%		36																		
DS.2026.60	1st PMU Drawing Comment	11			05-Nov-16	18-Nov-16	0%		36																		
DS.2026.62	2nd PMU Drawing Submission	11			18-Nov-16	01-Dec-16	0%		36																		
DS.2026.64	Approval of Performance Mock Up Drawing	11			01-Dec-16	14-Dec-16	0%		44																		
Podium Facade - Submission of Testing Proposal																											
DS.2026.66	1st Submission of Testing Proposal	11			14-Dec-16	29-Dec-16	0%		44																		
DS.2026.68	1st comment	6			30-Dec-16	06-Jan-17	0%		44																		
Podium Facade - Ordering & Production of Material																											
DS.2026.74	Sealant Ordering (Typical two weeks time, tailor made need th	12			14-Dec-16	29-Dec-16	0%		79																		
Podium Facade - Glass Production & Fabrication																											
DS.2026.76	Coated Glass Producion	48			14-Dec-16	14-Feb-17	0%		67																		
Podium Facade - Curtain Wall glazed panel production and Fabricatioin																											
DS.2026.80	Die Making	48			14-Dec-16	14-Feb-17	0%		25																		
Podium Facade - Terracotta																											
DS.2026.90	Ordering of Terracotta	11			14-Dec-16	29-Dec-16	0%		26																		
DS.2026.92	Die Making of Terracotta	36			29-Dec-16	14-Feb-17	0%		26																		
Podium Facade - Precast Concrete Facade																											
Podium Facade - Precast Facade Die Making																											
DS.2026.100	Percast Concrete Mould Making	96			14-Dec-16	12-Apr-17	0%		-11																		
Kinked Glass Wall with T Mullion and Reflective Glass at B1,CW-02b																											
Kinked Glass Wall - Drawing Submission																											
DS.2026.122	1st Shop Drawing Submission	11			29-Oct-16*	11-Nov-16	0%		125																		
DS.2026.124	1st Shop Drawing Comment	11			11-Nov-16	24-Nov-16	0%		125																		
DS.2026.126	2nd Shop Drawing Submission	11			24-Nov-16	07-Dec-16	0%		125																		
DS.2026.128	Approval of Performance Mock Up Drawing	11			08-Dec-16	22-Dec-16	0%		125																		
Kinked Glass Wall - Submission of Testing Proposal																											
DS.2026.130	1st Submission of Testing Proposal	11			22-Dec-16	06-Jan-17	0%		125																		
Kinked Glass Wall - Ordering & Production of Material																											
DS.2026.138	Sealant Ordering (Typical two weeks time, tailor made need th	12			22-Dec-16	07-Jan-17	0%		147																		
Kinked Glass Wall - Glass Production & Fabrication																											
DS.2026.140	Coated Glass Production	48			01-Nov-16*	29-Dec-16	0%		142																		
DS.2026.142	Fabrication of Insulated Glass Panel	12			29-Dec-16	13-Jan-17	0%		142																		
Kinked Glass Wall - Curtain Wall glazed panel production and Fabricatioin																											
DS.2026.146	Die Making	48			01-Nov-16	29-Dec-16	0%		136																		
DS.2026.144	PVF2 Paint Ordering	49			01-Nov-16	29-Dec-16	0%		148																		

[illegible]

[illegible]

Activity ID		Activity Name		Ori. Dur.	BaseLine Start	BaseLine Finish	Forecast / Actual Start	Forecast / Actual Finish	% Compl.	Finish Variance	Current Float
	DS.2260.74	Aluminium Extrusion Production	17			10-Dec-16	31-Dec-16	0%			111
Bulk Ordering & Production of Material											
Curtain Wall glazed panel production and Fabricatioin											
	DS.2260.92	Die Making	48			01-Nov-16*	28-Dec-16	0%			140
	DS.2260.94	PVF2 Paint Ordering	49			01-Nov-16	29-Dec-16	0%			156
	DS.2260.96	Aluminium Extrusion Production	17			29-Dec-16	18-Jan-17	0%			140
Glass Production & Fabrication											
	DS.2260.102	Coated Glass Production	48			17-Nov-16*	16-Jan-17	0%			132
(Redland) Precast Facade for M+ Podium & CSF Bldg											
(Redland) General Submission											
(Redland) Project Quality Plan											
	DS.3240	PQP - 2nd Submission and Approval	12			30-Sep-16	15-Oct-16	0%			16
	DS.3250	PQP - Approval of Project Quality Plan	0				15-Oct-16	0%			19
(Redland) Production Method Statement											
	DS.3290	PMS - 2nd Submission and Approval	12			30-Sep-16	15-Oct-16	0%			16
	DS.3300	PMS - Approval of Production Method Statement	0				15-Oct-16	0%			19
(Redland) Drawing Submission and Approval											
	DS.3340	2nd Submission and Approval	12			30-Sep-16	15-Oct-16	0%			16
	DS.3350	Approval of Schematic Design Drawings	0				15-Oct-16	0%			19
(Redland) BD Submission and Approval											
(Redland) BD Submission											
	DS.3420	BD Comments and review	36			30-Sep-16	12-Nov-16	0%			-8
	DS.3410	BD Submission	0			30-Sep-16		0%			-9
	DS.3430	Approval of BD Submission	0				12-Nov-16	0%			-9
(Redland) Fixing Layout for ARUP's Onward Submission to BD											
	DS.3450	BD Comments and review	36			30-Sep-16	12-Nov-16	0%			-8
	DS.3440	BD Submission	0			30-Sep-16		0%			-9
	DS.3460	Approval of BD Submission	0				12-Nov-16	0%			-9
(Redland) Shop Drawings											
	DS.3500	2nd Submission and Approval	12			14-Nov-16	26-Nov-16	0%			-8
	DS.3510	Approval of Shop Drawings	0				26-Nov-16	0%			-9
(Redland) Bulk Production, Fabrication and Delivery											
	DS.3520	Procurements of Materials	90			28-Nov-16	18-Mar-17	0%			-8
Structural Steel Trusses											
	DS.1130	Steel Tuss - Procurement, Fabrication & Delivery	150			29-Jan-16 A	31-Oct-16	75%			-33
Design, Shop Dwgs, Materials, Method Statement & Welding)											
Shop Drawings											
	DS.1030.41	Shop Drawing submission and approval of Steelwork for Shear f	117			21-Dec-15 A	31-Oct-16	80%			-21
Statutory Approval Status e.g. (BD & MTRC Approval)-1											
	DS.7060b11	BD issue endorsement to ARUP	14			26-Aug-16 A	31-Oct-16	90%			-34
Materials Procurements											
	DS.1040	Steel Tuss - Procurement, Fabrication & Delivery	150	14-Feb-16	12-Jul-16	01-Oct-15 A	31-Oct-16	80%	-91		-33
Fabrication & Delivery To Site											
	DS.1050	Steel Tuss - First Batch Arrival on Site (Contract Requirement -	0	01-Jun-16		30-Sep-16		0%	-121		-39

Activity ID		Activity Name			Orig. Dur.	BaseLine Start	BaseLine Finish	Forecast / Actual Start		Forecast / Actual Finish		% Compl.	Finish Variance	Current Float	September 2016				October 2016				November 2016				December 2016				January 2017													
																04	11	18	25	02	09	16	23	30	06	13	20	27	04	11	18	25	01	08										
Temporary Support System for Trusses - Proprietary & Non Proprietary System																																												
DS.1040.68	Fabrication & Delivery of non-proprietary system			50			11-Jun-16	A	21-Oct-16	20%		-44	Fabrication & Delivery of non-proprietary system, Fabrication & Delivery of non-proprietary system																															
Hanger Column																																												
DS.1040.85	Fabrication of Hanger Column Suspended from RC			43			14-Oct-16		02-Dec-16	0%		-21	Fabrication of Hanger Column, Fabrication of Hanger Column																															
DS.1040.80	Fabrication of Hanger Column Suspended from mega Truss			43			14-Oct-16		02-Dec-16	0%		22	Fabrication of Hanger Column, Fabrication of Hanger Column																															
DS.1040.86	Delivery of hanger column			0			03-Dec-16			0%		-24	Delivery of hanger column, Delivery of hanger column																															
Composite Column																																												
DS.1040.91	Composite Column Fabrication			34			02-Jan-16	A	18-Oct-16	96%		-47	Composite Column Fabrication, Composite Column Fabrication																															
Steel Truss Support Fabrication																																												
DS.1090	Steel Truss Support Fabrication for Truss 4 (*C94 & *C96)			21			19-Aug-16	A	31-Oct-16	56%		13	Steel Truss Support Fabrication for Truss 4 (*C94 & *C96), Steel Truss Support Fabrication for Truss 4 (*C94 & *C96)																															
DS.1056	Steel Truss Support Fabrication for Truss 3 (*C85 & C86)			21			19-Aug-16	A	15-Oct-16	66%		-5	Steel Truss Support Fabrication for Truss 3 (*C85 & C86), Steel Truss Support Fabrication for Truss 3 (*C85 & C86)																															
Steel Truss Support Delivery to Site																																												
DS.1050.10	Steel Truss Support @ East Core Wall for Trusses # 1, 2 & 5			0			30-Sep-16	A		100%			Steel Truss Support @ East Core Wall for Trusses # 1, 2 & 5, 30-Sep-16 A, Steel Truss Support @ East Core Wall for Trusses # 1, 2 & 5																															
DS.1130.10	Steel Truss Support for Truss # 5 (*C25)			0			12-Oct-16			0%		28	Steel Truss Support for Truss # 5 (*C25), 12-Oct-16																															
DS.1055.10	Steel Truss Support for Truss # 1 & 2(Column 68 & Column 71)			0			25-Oct-16			0%		-50	Steel Truss Support for Truss # 1 & 2(Column 68 & Column 71), Steel Truss Support for Truss # 1 & 2(Column 68 & Column 71)																															
DS.1090.10	Steel Truss Support for Truss # 3 (*C85 & C86)			0			22-Nov-16			0%		-6	Steel Truss Support for Truss # 3 (*C85 & C86), Steel Truss Support for Truss # 3 (*C85 & C86)																															
DS.1110.10	Steel Truss Support for Truss # 4 (*C94 & *C96)			0			22-Nov-16			0%		-6	Steel Truss Support for Truss # 4 (*C94 & *C96), Steel Truss Support for Truss # 4 (*C94 & *C96)																															
Steel Truss Members Fabrication																																												
DS.1080	Steel Truss Fabrication for Truss # 3			69			23-Apr-16	A	15-Oct-16	73%		-31	Steel Truss Fabrication for Truss # 3, Steel Truss Fabrication for Truss # 3																															
DS.1070	Steel Truss Fabrication for Truss # 2			69			23-Apr-16	A	14-Oct-16	97%		-26	Steel Truss Fabrication for Truss # 2, Steel Truss Fabrication for Truss # 2																															
DS.1060.1	Steel Truss Fabrication for Truss # 1			69			23-Apr-16	A	14-Oct-16	97%		-53	Steel Truss Fabrication for Truss # 1, Steel Truss Fabrication for Truss # 1																															
DS.1120	Steel Truss Fabrication for Truss # 5			69			23-Apr-16	A	12-Oct-16	92%		-31	Steel Truss Fabrication for Truss # 5, Steel Truss Fabrication for Truss # 5																															
DS.1100	Steel Truss Fabrication for Truss # 4			69			09-May-16	A	18-Oct-16	51%		34	Steel Truss Fabrication for Truss # 4, Steel Truss Fabrication for Truss # 4																															
Steel Truss Members Delivery to Site																																												
DS.1140.10	Steel Truss Members for Truss # 5			0			13-Oct-16			0%		-40	Steel Truss Members for Truss # 5, 13-Oct-16																															
DS.1070.10	Steel Truss Members for Truss # 1			0			15-Oct-16			0%		-65	Steel Truss Members for Truss # 1, 15-Oct-16																															
DS.1080.10	Steel Truss Members for Truss # 2			0			15-Oct-16			0%		-34	Steel Truss Members for Truss # 2, 15-Oct-16																															
DS.1100.10	Steel Truss Members for Truss # 3			0			16-Oct-16			0%		30	Steel Truss Members for Truss # 3, 16-Oct-16																															
DS.1120.10	Steel Truss Members for Truss # 4			0			19-Oct-16			0%		39	Steel Truss Members for Truss # 4, 19-Oct-16																															
Building Services																																												
MVAC																																												
DS.3070	MVAC - Shop Drawings, Materials & Method Statements Submission			120	01-Dec-15	29-Mar-16	01-Dec-15	A	31-Oct-16	48%	-176	-2	DS.3070, MVAC - Shop Drawings, Materials & Method Statements Submission																															
DS.3080	MVAC - CA Review & Comments			30	30-Mar-16	28-Apr-16	01-Apr-16	A	05-Nov-16	37%	-156	-2	DS.3080, MVAC - CA Review & Comments, MVAC - CA Review & Comments																															
DS.3090	MVAC - Incorporate Comments & Resubmit			30	29-Apr-16	28-May-16	15-Apr-16	A	22-Nov-16	20%	-146	-2	DS.3090, MVAC - Incorporate Comments & Resubmit																															
DS.3100	MVAC - CA Review & Approval			30	29-May-16	27-Jun-16	02-May-16	A	08-Dec-16	17%	-136	-2	DS.3100, MVAC - CA Review & Approval																															
DS.3110	MVAC - Procurement and Delivery			180	28-Jun-16	24-Dec-16	01-Sep-16	A	31-Mar-17	5%	-97	-2																																
Electrical and ELV Systems																																												
DS.4120	Elect & ELV Systems - Shop Drawings and Materials Submission			120	01-Dec-15	29-Mar-16	01-Dec-15	A	15-Oct-16	37%	-163	-29	DS.4120, Elect & ELV Systems - Shop Drawings and Materials Submission																															
DS.4130	Elect & ELV Systems - CA Review & Comments			30	30-Mar-16	28-Apr-16	01-Apr-16	A	31-Oct-16	27%	-151	-29	DS.4130, Elect & ELV Systems - CA Review & Comments																															
DS.4140	Elect & ELV Systems - Incorporate Comments & Resubmit			30	29-Apr-16	28-May-16	15-Apr-16	A	16-Nov-16	15%	-141	-29	DS.4140, Elect & ELV Systems - Incorporate Comments & Resubmit																															
DS.4150	Elect & ELV Systems - CA Review & Approval			30	29-May-16	27-Jun-16	16-May-16	A	02-Dec-16	13%	-131	-29	DS.4150, Elect & ELV Systems - CA Review & Approval																															
DS.4160	Elect & ELV Systems - Procurement and Delivery			150	28-Jun-16	24-Nov-16	03-Dec-16	A	01-May-17	0%	-158	-33																																
Fire Services																																												
DS.4010	FS - Shop Drawings and Materials Submission and Approval			120	01-Dec-15	29-Mar-16	01-Dec-15	A	15-Oct-16	90%	-163	-6	DS.4010, FS - Shop Drawings and Materials Submission and Approval																															

Prepared on 13-Oct-16			(3MRP-12) Three Months Rolling Programme Status at 30 Sept 2016															Page 17 of 27														
Activity ID	Activity Name	Ori. Dur.	BaseLine Start	BaseLine Finish	Forecast / Actual Start	Forecast / Actual Finish	% Compl.	Finish Variance	Current Float	September 2016					October 2016				November 2016					December 2016					January 2017			
										04	11	18	25	02	09	16	23	30	06	13	20	27	04	11	18	25	01	08				
DS.4020	FS - CA Review & Comments	30	30-Mar-16	28-Apr-16	15-Apr-16 A	31-Oct-16	85%	-151	-13										DS.4020, FS - CA Review & Comments, FS - CA Review													
DS.4030	FS - Incorporate Comments & Resubmit	30	29-Apr-16	28-May-16	22-Apr-16 A	07-Nov-16	80%	-133	-13										DS.4030, FS - Incorporate Comments & Resubmi													
DS.4040	FS - CA Review & Approval	30	29-May-16	27-Jun-16	16-May-16 A	14-Nov-16	75%	-115	-13										DS.4040, FS - CA Review & Approval, FS - C													
DS.4050	FS - Procurement and Delivery	150	28-Jun-16	13-Jan-17	15-Nov-16 A	13-Apr-17	0%	-90	-15															DS.4050, FS - Procurement and Delivery								
Plumbing and Drainage																																
DS.3010	Plumbing & Drainage - Shop Drawings, Materials & Method Stat	90	31-Dec-15	29-Mar-16	30-Dec-15 A	15-Oct-16	90%	-163	-29										DS.3010, Plumbing & Drainage - Shop Drawings, Materials & Metho													
DS.3020	Plumbing & Drainage - CA Review & Comments	30	30-Mar-16	28-Apr-16	01-Apr-16 A	31-Oct-16	85%	-151	-29										DS.3020, Plumbing & Drainage - CA Review & Commer													
DS.3030	Plumbing & Drainage - Incorporate Comments & Resubmit	30	29-Apr-16	28-May-16	14-Apr-16 A	16-Nov-16	80%	-141	-29										DS.3030, Plumbing & Drainage - Incorpora													
DS.3040	Plumbing & Drainage - CA Review & Approval	30	29-May-16	27-Jun-16	02-May-16 A	02-Dec-16	75%	-131	-29										DS.3040, Plumbing & Drainag													
DS.3050	Plumbing & Drainage - Procurement and Delivery	150	28-Jun-16	24-Nov-16	03-Dec-16 A	01-May-17	0%	-158	-33															DS.3050, Plumbing & Drainage - Procurement and Delivery								
Mechanical and Lifting Platform																																
DS.5210	Lifting Platform - Shop Drawings, Materials & Method Statemen	90	01-Dec-15	28-Feb-16	01-Dec-15 A	15-Oct-16	30%	-186	11										DS.5210, Lifting Platform - Shop Drawings, Materials & Method Sta													
DS.5220	Lifting Platform - CA Review & Comments	30	29-Feb-16	29-Mar-16	15-Apr-16 A	29-Oct-16	20%	-175	11										DS.5220, Lifting Platform - CA Review & Comments, Lifti													
DS.5230	Lifting Platform - Incorporate Comments & Resubmit	30	30-Mar-16	28-Apr-16	30-Apr-16 A	15-Nov-16	15%	-164	11										DS.5230, Lifting Platform - Incorporate Cor													
DS.5240	Lifting Platform - CA Review & Approval	30	29-Apr-16	28-May-16	16-May-16 A	01-Dec-16	10%	-154	11										DS.5240, Lifting Platform - CA													
DS.5250	Lifting Platform - Procurement and Delivery	300	29-May-16	24-Mar-17	02-Dec-16 A	27-Sep-17	0%	-187	13															DS.5250, Lifting Platform - Procurement and Delivery								
Lifts and Escalator																																
DS.5110	Lift & Escalator - Shop Drawings, Materials & Method Statemen	90	01-Dec-15	28-Feb-16	01-Dec-15 A	15-Oct-16	55%	-186	-33										DS.5110, Lift & Escalator - Shop Drawings, Materials & Method Sta													
DS.5120	Lift & Escalator - CA Review & Comments	30	29-Feb-16	29-Mar-16	15-Apr-16 A	31-Oct-16	29%	-176	-33										DS.5120, Lift & Escalator - CA Review & Comments, Lift													
DS.5130	Lift & Escalator - Incorporate Comments & Resubmit	30	30-Mar-16	28-Apr-16	30-Apr-16 A	16-Nov-16	26%	-165	-33										DS.5130, Lift & Escalator - Incorporate Co													
DS.5140	Lift & Escalator- CA Review & Approval	30	29-Apr-16	28-May-16	16-May-16 A	02-Dec-16	10%	-155	-33										DS.5140, Lift & Escalator- CA													
DS.5150	Lift & Escalator - Procurement and Delivery	300	29-May-16	24-Mar-17	03-Dec-16 A	28-Sep-17	0%	-188	-38															DS.5150, Lift & Escalator - Procurement and Delivery								
Art Lift (LT-11 & LT-13)																																
DS.5020	Art Lift - Shop Drawings, Materials & Method Statements Subm	90	01-Dec-15	28-Feb-16	01-Dec-15 A	07-Oct-16	50%	-180	5										DS.5020, Art Lift - Shop Drawings, Materials & Method Statements Subm													
DS.5025	Art Lift - CA Review & Comments	30	29-Feb-16	29-Mar-16	15-Apr-16 A	14-Oct-16	50%	-162	5										DS.5025, Art Lift - CA Review & Comments, Art Lift - CA Review & C													
DS.5030	Art Lift - Incorporate Comments & Resubmit	54	30-Mar-16	28-Apr-16	15-Oct-16	16-Dec-16	0%	-191	5										DS.5030, Art Lift -													
DS.5040	Art Lift - CA Review & Approval	30	29-Apr-16	28-May-16	17-Dec-16	24-Jan-17	0%	-197	5															DS.5040, Art Lift - CA Review & Approval								
ABWF and Fitout																																
Ceramic Tile																																
DS.6010	Ceramic Tile - Shop Drawings, Materials Sample Submission	90	30-Nov-15	27-Feb-16	30-Nov-15 A	12-Oct-16	90%	-183	39										DS.6010, Ceramic Tile - Shop Drawings, Materials Sample Submission													
DS.6020	Ceramic Tile - CA Review & Comments	30	28-Feb-16	28-Mar-16	13-Oct-16	16-Nov-16	0%	-191	39										DS.6020, Ceramic Tile - CA Review & Com													
DS.6030	Ceramic Tile - Incorporate Comments & Resubmit	30	29-Mar-16	27-Apr-16	17-Nov-16	22-Dec-16	0%	-196	39										DS.6030, Cer													
DS.6040	Ceramic Tile - CA Review & Approval	30	28-Apr-16	27-May-16	23-Dec-16	01-Feb-17	0%	-202	39															DS.6040, Ceramic Tile - CA Review & Approval								
Soft and Hard Landscaping																																
DS.7010	Landscaping - Shop Drawings, Materials & Method Statements	90	18-Apr-16	16-Jul-16	30-Sep-16	18-Jan-17	0%	-153	58										DS.7010, Landscaping - Shop Drawings, Materials & Method Statements													
DS.7000	Landscaping - Award Specialist Subcontractor	0	18-Apr-16		30-Sep-16		0%	-165	70										DS.7000, Landscaping - Award Specialist Subcontractor													
Design Detailing / Buildability Co-ordination																																
Spatial Coordination for BIM / CSD / CBWD																																
Basement																																
B00.0010	Preparation and submission for BIM / CSD / CBWD at B1/F (Tear	60	01-Oct-15	29-Nov-15	01-Oct-15 A	19-Oct-16	85%	-260	-23										B00.0010, Preparation and submission for BIM / CSD / CBWD at													
B00.0030	Review, resubmission and approval for BIM / CSD / CBWD at B1	30	30-Nov-15	29-Dec-15	30-Nov-15 A	04-Nov-16	20%	-251	-14										B00.0030, Review, resubmission and approval for B													
M+ Podium																																
B00.0040	Preparation and submission for BIM / CSD / CBWD at G/F (Tear	60	30-Nov-15	28-Jan-16	30-Nov-15 A	05-Nov-16	70%	-227	-25										B00.0040, Preparation and submission for BIM / CSD													
B00.0080	Preparation and submission for BIM / CSD / CBWD at 1M/F (Te	60	29-Jan-16	28-Mar-16	30-Jul-16 A	31-Oct-16	80%	-177	-25										B00.0080, Preparation and submission for BIM / CSD /													

Activity ID		Activity Name	Ori. Dur.	BaseLine Start	BaseLine Finish	Forecast / Actual Start	Forecast / Actual Finish	% Compl.	Finish Variance	Current Float	September 2016				October 2016				November 2016				December 2016				January 2017		
											04	11	18	25	02	09	16	23	30	06	13	20	27	04	11	18	25	01	08
B00	B00.0050	Preparation and submission for BIM / CSD / CBWD at 1/F (Tear	60	30-Nov-15	28-Jan-16	15-Aug-16 A	31-Oct-16	20%	-222	-23									B00.0050, Preparation and submission for BIM / CSD /										
	B00.0100	Review, resubmission and approval for BIM / CSD / CBWD at 1/F	30	29-Mar-16	27-Apr-16	15-Aug-16 A	31-Oct-16	20%	-152	24									B00.0100, Review, resubmission and approval for BIM										
	B00.0060	Review, resubmission and approval for BIM / CSD / CBWD at G/F	30	29-Jan-16	27-Feb-16	30-Sep-16	05-Nov-16	0%	-204	-25									B00.0060, Review, resubmission and approval for										
	B00.0090	Preparation and submission for BIM / CSD / CBWD at 2/F (Tear	60	29-Jan-16	28-Mar-16	30-Sep-16	10-Dec-16	0%	-212	-23									B00.0090, Preparation										
	B00.0120	Preparation and submission for BIM / CSD / CBWD at 3/F (Tear	60	29-Mar-16	27-May-16	30-Sep-16	10-Dec-16	0%	-163	-25									B00.0120, Preparation										
	B00.0070	Review, resubmission and approval for BIM / CSD / CBWD at 1/F	30	29-Jan-16	27-Feb-16	20-Oct-16	23-Nov-16	0%	-219	-14									B00.0070, Review, resubmission and										
	B00.0110	Review, resubmission and approval for BIM / CSD / CBWD at 2/F	30	29-Mar-16	27-Apr-16	25-Nov-16	31-Dec-16	0%	-203	-23									B00.0110, Review, resubmission and										
	B00.0130	Review, resubmission and approval for BIM / CSD / CBWD at 3/F	30	28-May-16	26-Jun-16	12-Dec-16	18-Jan-17	0%	-169	-19									B00.0130, Review, resubmission and										
M+ Tower																													
B6B	B6B.0000	Preparation and submission for BIM / CSD / CBWD at 4/F (Tear	45	29-Mar-16	12-May-16	30-Sep-16	23-Nov-16	0%	-160	-2									B6B.0000, Preparation and submissi										
B6B	B6B.0030	Preparation and submission for BIM / CSD / CBWD at 5/F (Tear	45	28-May-16	11-Jul-16	30-Sep-16	23-Nov-16	0%	-112	-25									B6B.0030, Preparation and submissi										
B6B	B6B.0070	Preparation and submission for BIM / CSD / CBWD at 6/F (Tear	45	12-Jul-16	25-Aug-16	08-Nov-16	31-Dec-16	0%	-105	-25									B6B.0070, Preparation and submissi										
B6B	B6B.0020	Preparation and submission for BIM / CSD / CBWD at 10/F (Tear	45	13-May-16	26-Jun-16	08-Nov-16	31-Dec-16	0%	-155	-2									B6B.0020, Preparation and submissi										
B6B	B6B.0010	Review, resubmission and approval for BIM / CSD / CBWD at 4/F	20	13-May-16	01-Jun-16	24-Nov-16	16-Dec-16	0%	-164	39									B6B.0010, Review, resubmission and										
B6B	B6B.0060	Review, resubmission and approval for BIM / CSD / CBWD at 5/F	20	12-Jul-16	31-Jul-16	24-Nov-16	16-Dec-16	0%	-116	51									B6B.0060, Review, resubmission and										
B6B	B6B.0110	Preparation and submission for BIM / CSD / CBWD at 7/F (Tear	45	26-Aug-16	09-Oct-16	14-Dec-16	10-Feb-17	0%	-100	-25									B6B.0110, Preparation and submissi										
B6B	B6B.0050	Preparation and submission for BIM / CSD / CBWD at 11/F (Tear	45	27-Jun-16	10-Aug-16	14-Dec-16	10-Feb-17	0%	-149	-2									B6B.0050, Preparation and submissi										
CSF Block																													
B20	B20.0280	Preparation and submission for BIM / CSD / CBWD at G/F (Tear	45	13-Feb-16	28-Mar-16	15-Aug-16 A	15-Nov-16	10%	-190	14									B20.0280, Preparation and submission for										
B20	B20.0300	Preparation and submission for BIM / CSD / CBWD at 1-5/F (Tear	60	29-Mar-16	27-May-16	30-Sep-16	10-Dec-16	0%	-163	14									B20.0300, Preparation and submissi										
B20	B20.0290	Review, resubmission and approval for BIM / CSD / CBWD at G/F	20	29-Mar-16	17-Apr-16	16-Nov-16	08-Dec-16	0%	-194	105									B20.0290, Review, resubmission and										
B20	B20.0320	Preparation and submission for BIM / CSD / CBWD at 6/F (Tear	45	28-May-16	11-Jul-16	25-Nov-16	19-Jan-17	0%	-158	14									B20.0320, Preparation and submissi										
B20	B20.0310	Review, resubmission and approval for BIM / CSD / CBWD at 1/F	30	28-May-16	26-Jun-16	12-Dec-16	18-Jan-17	0%	-169	73									B20.0310, Review, resubmission and										
Interfacing Car Park and Sewage Pumping Station (SPS)																													
D02	D02.0010	Review, resubmission and approval for BIM / CSD / CBWD at IC	15	15-Nov-15	29-Nov-15	16-Jun-16 A	19-Oct-16	50%	-260	-62									D02.0010, Review, resubmission and approval for BIM / CSD / C										
D01	D01.0010	Review, resubmission and approval for BIM / CSD / CBWD at SF	15	13-Feb-16	27-Feb-16	16-Jun-16 A	15-Oct-16	50%	-186	-44									D01.0010, Review, resubmission and approval for BIM / CSD / CBW										
D02	D02.0020	Preparation and submission for BIM / CSD / CBWD at ICP G/F (Tear	45	15-Nov-15	29-Dec-15	30-Sep-16	23-Nov-16	0%	-267	95									D02.0020, Preparation and submissi										
D02	D02.0030	Review, resubmission and approval for BIM / CSD / CBWD at IC	30	30-Dec-15	28-Jan-16	08-Nov-16	12-Dec-16	0%	-258	95									D02.0030, Review, resubmission and										
4D Time Management (1st Draft)																													
B00	B00.0160	Facade works	75	14-Jan-16	28-Mar-16	30-Sep-16	30-Dec-16	0%	-227	216									B00.0160, Facade works										
Visual Mock-Up (VMU)																													
VMU Preliminary																													
A00	A00.3610	VMU Works Period (Contract requirement of 200 calendar days	169	01-Oct-15	17-Apr-16	01-Oct-15 A	26-Nov-16	80%	-184	73									VMU Works Period (Contract requirement of 200 calendar days)										
VMU Construction																													
Step 2.0 - Existing Concrete Shell																													
VMU ABWF & Finishes																													
VMU Gallery & B1 Plaza Space																													
VMU Floor																													
A00	A00.3120	Install Raised Flooring	8	15-Jan-16	23-Jan-16	17-May-16 A	03-Oct-16	90%	-203	97									A00.3120, Install Raised Flooring, Install Raised Flooring										
A00	A00.3130	Install Timber Flanks Flooring	6	07-Mar-16	12-Mar-16	20-Jun-16 A	03-Oct-16	90%	-164	95									A00.3130, Install Timber Flanks Flooring, Install Timber Flanks Flooring										
VMU Facade Works																													
A00	A00.3690	Erection of Scaffolds for Shell Mock-Up	4	16-Feb-16	19-Feb-16	18-Jul-16 A	30-Sep-16	50%	-182	73									A00.3690, Erection of Scaffolds for Shell Mock-Up, Erection of Scaffolds for Shell Mock-Up										
A00	A00.3700	Install Facade Mock-Up Panels	7	20-Feb-16	27-Feb-16	30-Sep-16	11-Oct-16	0%	-182	73									A00.3700, Install Facade Mock-Up Panels										
A00	A00.3815	Install Glazing & Sealant Application	2	29-Feb-16	01-Mar-16	11-Oct-16	13-Oct-16	0%	-182	73									A00.3815, Install Glazing & Sealant Application										

Activity ID	Activity Name	Ori. Dur.	BaseLine Start	BaseLine Finish	Forecast / Actual Start	Forecast / Actual Finish	% Compl.	Finish Variance	Current Float	September 2016				October 2016				November 2016				December 2016				January 2017	
										04	11	18	25	02	09	16	23	30	06	13	20	27	04	11	18	25	01
A00.3825	Install Glazing & Sealant Application	14	02-Mar-16	17-Mar-16	13-Oct-16	29-Oct-16	0%	-182	73	A00.3825, Install Glazing & Sealant Application																	
VMU Step 2.1 - Hybrid Shell Mock-Up																											
VMU ABWF & Finishes																											
A00.3350	Hybrid Mock Up - Install Panel Doors (2-nos)	5	22-Feb-16	26-Feb-16	04-Jun-16 A	03-Oct-16	90%	-177	89	A00.3350, Hybrid Mock Up - Install Panel Doors (2-nos), Hybrid Mock Up - In																	
VMU External Facade																											
A00.3805	Hybrid Mock Up - Inspection and Approval of Visual Mock-up	14	15-Feb-16	01-Mar-16	30-Sep-16	18-Oct-16	0%	-186	83	A00.3805, Hybrid Mock Up - Inspection and Approval of Visual Mo																	
VMU MEP Testing and Commissioning																											
A00.3485	VMU - Building Services Testing and Commissioning	6	07-Mar-16	17-Mar-16	01-Sep-16 A	11-Oct-16	50%	-166	89	A00.3485, VMU - Building Services Testing and Commissioning, VMU -																	
VMU Statutory Submission & Inspection																											
VMU WSD (FS Pipeworks)																											
A00.3910	VMU - Inspection and Approval by WSD	1	03-Mar-16	03-Mar-16	30-Sep-16	30-Sep-16	0%	-171	90	A00.3910, VMU - Inspection and Approval by WSD																	
A00.3920	VMU - Tie-In Connection to Existing Dog House	2	04-Mar-16	05-Mar-16	03-Oct-16	04-Oct-16	0%	-171	90	A00.3920, VMU - Tie-In Connection to Existing Dog House																	
VMU EMSD (Electrical)																											
A00.3930	VMU - Prepare & Submit Form WR1 to EMSD (For records only)	6	18-Mar-16	24-Mar-16	12-Oct-16	18-Oct-16	0%	-166	95	A00.3930, VMU - Prepare & Submit Form WR1 to EMSD (For recd																	
VMU FSD (Fire Service)																											
A00.3490	VMU - Form 314 & 501 Submission	0	18-Mar-16		29-Oct-16		0%	-226	89	VMU - Form 314 & 501 Submission, VMU - Form 314 & 5																	
A00.3500	VMU - FSD's Inspection & Fire Certificate Issuance	12	18-Mar-16	01-Apr-16	29-Oct-16	12-Nov-16	0%	-184	73	A00.3500, VMU - FSD's Inspection & Fire Cer																	
VMU BD (OP)																											
A00.3510	VMU - Submission of BA14	0	02-Apr-16		12-Nov-16		0%	-225	93	VMU - Submission of BA14, VMU - Submission																	
A00.3520	VMU - BD Inspection	12	02-Apr-16	17-Apr-16	12-Nov-16	26-Nov-16	0%	-184	73	A00.3520, VMU - BD Inspection																	
A00.3530	VMU - M+ OP	0		17-Apr-16		26-Nov-16	0%	-223	93	VMU - M+ OP, VMU - M+ OP,																	
Last Date for Exercising Provisional Sum & Optional Items (Refer Annex B to Preamble) (To be revised																											
Conservation & Storage Facility (CSF)																											
Storage - Fitting-out Works																											
PA1.4	Photo studio (2/F) - x-ray protection enhancement	0		29-Sep-16		30-Sep-16	0%	0	848	Photo studio (2/F) - x-ray protection enhancement, Photo studio (2/F) - x-ray p																	
Conseration Laboratory - Furniture and Fixtures																											
PA6.5	Fixed furniture in pantry	0		29-Sep-16		30-Sep-16	0%	0	848	Fixed furniture in pantry, Fixed furniture in pantry,																	
Conseration Laboratory - Laboratory Equipment																											
PA7.1	Exhaust trucks-overhead mounted fume extraction arms	0		29-Sep-16		30-Sep-16	0%	0	848	Exhaust trucks-overhead mounted fume extraction arms, Exhaust trucks-overh																	
PA7.2	Fume hood cabinet	0		29-Sep-16		30-Sep-16	0%	0	848	Fume hood cabinet, Fume hood cabinet,																	
PA7.3	Exhaust wall (size 5m (L) x 3m (H))	0		29-Sep-16		30-Sep-16	0%	0	848	Exhaust wall (size 5m (L) x 3m (H), Exhaust wall (size 5m (L) x 3m (H)),																	
PA7.5	Wet shower area free standing enclosure	0		29-Sep-16		30-Sep-16	0%	0	848	Wet shower area free standing enclosure, Wet shower area free standing enclos																	
PA7.7	Stainless steel laboratory sink	0		29-Sep-16		30-Sep-16	0%	0	848	Stainless steel laboratory sink, Stainless steel laboratory sink,																	
Museum																											
Juke Box Installation																											
PE3.2	Equipment system and machinery for "Juke Box" installation	0		29-Sep-16		30-Sep-16	0%	0	848	Equipment system and machinery for "Juke Box" installation, Equipment syste																	
Items Related to Museum Operations																											
PE4.6	People counting system - module enhancement to CCTV system	0		29-Sep-16		30-Sep-16	0%	0	848	People counting system - module enhancement to CCTV system, People countin																	
Back of House including Museum Workshop and Art Handling																											
Workshop																											
PH4.3	Exhaust wall	0		29-Sep-16		30-Sep-16	0%	0	848	Exhaust wall, Exhaust wall,																	
L1 and B1 Museum Shop including Espresso Bar																											
Fitting-out Works																											
PJ2.2	Architectural lightings	0		29-Sep-16		30-Sep-16	0%	0	848	Architectural lightings, Architectural lightings,																	

Activity ID		Activity Name	Ori. Dur.	BaseLine Start	BaseLine Finish	Forecast / Actual Start	Forecast / Actual Finish	% Compl.	Finish Variance	Current Float
PJ2.3	Security shutter	0		29-Sep-16		30-Sep-16	0%	0	848	
Signage										
PM2	All non-digital way-finding signage	0		29-Sep-16		30-Sep-16	0%	0	848	
PM3	Digital signage at information counters	0		29-Sep-16		30-Sep-16	0%	0	848	
External Works / Hard & Soft Landscape										
PN2	Elements cooling main - ventilation intake shaft / maintenance	0	26-Sep-15			30-Sep-16		0%	-370	848
PN4	EMSD compliant design for canopy extension to G/F to L3 cano	0		29-Dec-15		30-Sep-16		0%	-275	848
MEP-General Issues										
PO6	Addition of 1 no. 1250TR chiller installation at M+ DCS plantroc	0		24-Oct-16		24-Oct-16		0%	0	823
Other Provisional Sums / Options for M+ Main Works Contract										
PP2.2	Interface car park - ELS, Architectural and BS works	0		28-Jan-16		30-Sep-16		0%	-245	706
PP3.2	Sewage pumping station (SPS) - ELS, foundation, signage, buil	0		28-Jan-16		30-Sep-16		0%	-245	848
PP4	Sea water pump cell - basic Building Services provisions	0		26-Sep-15		30-Sep-16		0%	-369	848
PP5	BWIC / basic Building Services provisions for CLP transformer rc	0		26-Sep-15		30-Sep-16		0%	-370	848
PP6	CA/RSS M+PSO - Complete office accommodation and supportii	0		26-Sep-15		30-Sep-16		0%	-370	848
PP7	Contractor's proposed of SOM and IPS	0		26-Sep-15		30-Sep-16		0%	-370	848
Construction Milestones (Internal Reference)										
CM0150	SPS Structure Topping-Out	0		26-Aug-16		30-Nov-16		0%	-96	-100
Excavation & ELS										
BD Milestones & BD Stages LOE										
Portion M01										
B10.3390	BD Stage 4 - Construct B2 slab for A5, B5 & Site formation for /	0	19-Mar-16	29-Nov-16	14-Jul-16 A	30-Nov-16	50%	-1	19	
B10.3420	BD Stage 7 - Construct B2 slab for A9, A10, A11, A12, B7, B8,	25	03-Jun-16	24-Oct-16	22-Sep-16 A	05-Nov-16	0%	-11	5	
AEL North										
Portion A6, A7, A10, A11										
Portion A11										
B10.2250	AEL North - ELS Stage 5 Portion A11- Trim Piles & Blinding	5			12-Sep-16 A	30-Sep-16 A	100%			
Portion A8, B6, A12, B7										
B10.3580	AEL North - ELS Stage 5 Site Formation (Portion A12, B7)	30	25-Oct-16	29-Nov-16	15-Aug-16 A	30-Nov-16	10%	-1	19	
Portion A12										
B10.3930	AEL North - ELS Stage 5 Site Formation (Portion A12) - Trim &	5			15-Sep-16 A	30-Sep-16 A	100%			
AEL South										
DCS										
B10.2220	DCS - Remove 1st Layer Struts at +4.2mPD	11	20-Jun-16	05-Jul-16	30-Sep-16	18-Oct-16	0%	-67	436	
B10.2230	DCS - Backfilling and Install Access Hatch and Misc. Works	50	08-Jul-16	20-Sep-16	20-Oct-16	17-Dec-16	0%	-67	436	
AEL South except DCS										
B10.1090	AEL South - Plant Room - Excavate to +2.45mPD for Plant Roo	16	20-Apr-16	12-May-16	30-Sep-16	25-Oct-16	0%	-107	111	
AEL North East of Portion A10 (for Area M12 h/o)										
C10.0390	Vacate Portion M12 for Lyric Contractor for Foundations (App.D	0		23-Sep-16		30-Sep-16		0%	-6	57
ICP										
B10.3240	ICP - Lateral Support	50	10-May-16	26-Jul-16	30-May-16 ^	08-Nov-16	15%	-70	-65	
B10.3220	ICP - Pile Cap Construction of Area A	25	10-May-16	17-Jun-16	16-Jul-16 A	31-Oct-16	70%	-88	-65	
B10.3230	ICP - Pile Cap Construction of Area B	25	18-Jun-16	26-Jul-16	27-Aug-16 A	31-Oct-16	10%	-63	-58	

Activity ID	Activity Name	Ori. Dur.	BaseLine Start	BaseLine Finish	Forecast / Actual Start	Forecast / Actual Finish	% Compl.	Finish Variance	Current Float	September 2016				October 2016				November 2016				December 2016				January 2017	
										04	11	18	25	02	09	16	23	30	06	13	20	27	04	11	18	25	01
B10.3250	ICP - Complete Excavation & Lateral Support	0		26-Jul-16		08-Nov-16	0%	-105	-98	ICP - Complete Excavation & Lateral Support, ICP																	
Structures																											
Basement Structures / Sub-Structure																											
Pilecaps																											
AEL North																											
Stage 3 - Pilecap (A4,A5,B4,B5)																											
Pilecap (A4 & A5)																											
B10.2060p	AEL North - ELS Stage 4 - Extend 1st height of basement wall	10			28-Jul-16 A	15-Oct-16	30%		-35	AEL North - ELS Stage 4 - Extend 1st height of basement wall, AEL																	
Pilecap (B4 & B5)																											
B10.2070m	AEL North - ELS Stage 4 - Extend 1st height of basement wall	12			08-Aug-16 A	25-Oct-16	10%		-37	AEL North - ELS Stage 4 - Extend 1st height of basement w																	
Stage 4 to 7: ELS & Excavation (A6, A7, A8, A9, A10, A11, A12 & B6, B7, B8, B9)																											
Pilecaps - Portion (A10a, A10b, A11 & A12)																											
B10.3590	AEL North - BD Stage 6 - Pile Cap Construction (Portion A10, A	24	28-Jun-16	13-Aug-16	01-Jul-16 A	08-Oct-16	30%	-36	5	B10.3590, AEL North - BD Stage 6 - Pile Cap Construction (Portion A10,																	
Pile Cap Portion A10a																											
B10.3790	AEL North - BD Stage 6 - Pile Construction (Portion A10a)	5			20-Aug-16 A	07-Oct-16	70%		5	AEL North - BD Stage 6 - Pile Construction (Portion A10a), AEL North - BD																	
Pile Cap Portion A11																											
B10.3710	AEL North - BD Stage 6 - Pile Cap Construction (Portion A11)	6			30-Sep-16	11-Oct-16	0%		7	AEL North - BD Stage 6 - Pile Cap Construction (Portion A11)																	
B10.3720	AEL North - BD Stage 6 - Underground Drainage (Portion A11)	6			30-Sep-16	11-Oct-16	0%		610	AEL North - BD Stage 6 - Underground Drainage (Portion A11)																	
Pile Cap Portion A12																											
B10.3730	AEL North - BD Stage 6 - Pile Cap Construction (Portion A12)	6			30-Sep-16	11-Oct-16	0%		7	AEL North - BD Stage 6 - Pile Cap Construction (Portion A12)																	
B10.3740	AEL North - BD Stage 6 - Underground Drainage (Portion A12)	6			30-Sep-16	11-Oct-16	0%		610	AEL North - BD Stage 6 - Underground Drainage (Portion A12)																	
Pilecaps - Portion B6 & B7																											
B10.3610	AEL North - BD Stage 4 - Pile Cap Construction (Portion A8, B6)	30	06-Aug-16	19-Sep-16	08-Sep-16 A	22-Sep-16 A	100%	-1		B10.3610, AEL North - BD Stage 4 - Pile Cap Construction (Portion A8, B6), AEL North																	
B10.3620	AEL North - BD Stage 5 - Underground Drainage (Portion B6)	12	08-Aug-16	23-Aug-16	12-Sep-16 A	20-Sep-16 A	100%	-17		B10.3620, AEL North - BD Stage 5 - Underground Drainage (Portion B6), AEL North - BD																	
B10.3630	AEL North - BD Stage 6 - Pile Cap Construction (Portion B7)	9	06-Aug-16	10-Sep-16	11-Oct-16	22-Oct-16	0%	-26	5	B10.3630, AEL North - BD Stage 6 - Pile Cap Construction (Po																	
B10.3640	AEL North - BD Stage 6 - Underground Drainage (Portion B7)	9	06-Aug-16	16-Aug-16	11-Oct-16	22-Oct-16	0%	-43	11	B10.3640, AEL North - BD Stage 6 - Underground Drainage (
RC Structure for Water Tank																											
B10.3355	AEL North - Construct Water Tank Part 2 (West of Portion B1)	35	16-Aug-16	08-Oct-16	30-Sep-16	17-Nov-16	0%	-30	581	B10.3355, AEL North - Construct Water T																	
B2/F Slabs																											
B2 Slab - Portion (B8 & A9)																											
B10.3530	AEL North - B2 Slab - Stage 7 (Portion B8)	9			19-Sep-16 A	26-Sep-16 A	100%			AEL North - B2 Slab - Stage 7 (Portion B8), AEL North - B2 Slab - Stage 7 (Portion																	
B10.3490	AEL North - B2 Slab - Stage 7 (Portion A9)	11	06-Jun-16	15-Aug-16	27-Sep-16 A	11-Oct-16	0%	-36	-35	B10.3490, AEL North - B2 Slab - Stage 7 (Portion A9), AEL North - B2																	
B2 Slab - Portion (B9)																											
B10.3500	AEL North - B2 Slab - Stage 7 (Portion B9)	9	03-Jun-16	15-Jul-16	22-Sep-16 A	11-Oct-16	0%	-56	-30	B10.3500, AEL North - B2 Slab - Stage 7 (Portion B9), AEL North - B2																	
B2 Slab - Portion (A10a, A10b, A11 & A12)																											
B10.3035	AEL North - B2 Slab - Stage 7 (Portion A10b)	10			07-Oct-16	22-Oct-16*	0%		5	AEL North - B2 Slab - Stage 7 (Portion A10b)																	
B10.3045	AEL North - B2 Slab - Stage 7 (Portion A10a)	10			07-Oct-16	22-Oct-16	0%		28	AEL North - B2 Slab - Stage 7 (Portion A10a)																	
B10.3005	AEL North - B2 Slab - Stage 7 (Portion A10, A11, A12)	10	18-Jul-16	15-Sep-16	07-Oct-16	22-Oct-16	0%	-23	28	B10.3005, AEL North - B2 Slab - Stage 7 (Portion A10, A11, A																	
B10.3075	AEL North - B2 Slab - Stage 7 (Portion A11)	6			13-Oct-16	21-Oct-16*	0%		7	AEL North - B2 Slab - Stage 7 (Portion A11)																	
B10.3085	AEL North - B2 Slab - Stage 7 (Portion A12)	6			13-Oct-16	21-Oct-16*	0%		7	AEL North - B2 Slab - Stage 7 (Portion A12)																	
B2 Slab - Portion (B6 & B7)																											
B10.3022	AEL North - B2 Slab - Stage 5 (Portion B6)	7	10-Sep-16	08-Oct-16	30-Sep-16	13-Oct-16	0%	-2	2	B10.3022, AEL North - B2 Slab - Stage 5 (Portion B6)																	
B10.3023	AEL North - B2 Slab - Stage 7 (Portion B7)	11	17-Sep-16	24-Oct-16	24-Oct-16	05-Nov-16	0%	-10	5	B10.3023, AEL North - B2 Slab - Stage 7 (Portion																	

Activity ID	Activity Name	Ori. Dur.	BaseLine Start	BaseLine Finish	Forecast / Actual Start	Forecast / Actual Finish	% Compl.	Finish Variance	Current Float	September 2016				October 2016				November 2016				December 2016				January 2017	
										04	11	18	25	02	09	16	23	30	06	13	20	27	04	11	18	25	01
B10.3024	Complete B2 Slab (exclude AEL Zone)	0		24-Oct-16		05-Nov-16	0%	-10	5	Complete B2 Slab (exclude AEL Zone), Complete B2 Slab (exclude AEL Zone)																	
B1/F Slab - Walls, Columns & B1/F Slabs																											
AEL North - B1/F Slab other than AEL Zone																											
B10.3540	AEL North - Wall, Column & B1 Slab (Portion B1F)	20	31-May-16	30-Jun-16	01-Jul-16 A	07-Oct-16	80%	-63	-33	B10.3540, AEL North - Wall, Column & B1 Slab (Portion B1F), AEL North - Wall, Column & B1 Slab (Portion B1F)																	
B10.3065	AEL North - Wall, Column & B1 Slab (Portion B1D)	19	11-Apr-16	03-May-16	12-Sep-16 A	04-Oct-16	84%	-99	-10	B10.3065, AEL North - Wall, Column & B1 Slab (Portion B1D), AEL North - Wall, Column & B1 Slab (Portion B1D)																	
B10.3690	AEL North - Wall, Column & B1 Slab (Portion B1R)	20	18-Jul-16	15-Aug-16	07-Oct-16	03-Nov-16	0%	-53	-30	B10.3690, AEL North - Wall, Column & B1 Slab (Portion B1R), AEL North - Wall, Column & B1 Slab (Portion B1R)																	
B10.3560	AEL North - Wall, Column & B1 Slab (Portion B1G) (Portion A6, B10.3560, AEL North - Wall, Column & B1 Slab (Portion B1G) (Portion A6, B10.3560, AEL North - Wall, Column & B1 Slab (Portion B1G) (Portion A6, B10.3560, AEL North - Wall, Column & B1 Slab (Portion B1G) (Portion A6, B10.3560, AEL North - Wall, Column & B1 Slab (Portion B1G) (Portion A6, B10.3560, AEL North - Wall, Column & B1 Slab (Portion B1G) (Portion A6, B10.3560, AEL North - Wall, Column & B1 Slab (Portion B1G) (Portion A6, B10.3560, AEL North - Wall, Column & B1 Slab (Portion B1G) (Portion A6, B10.3560, AEL North - Wall, Column & B1 Slab (Portion B1G) (Portion A6, B10.3560, AEL North - Wall, Column & B1 Slab (Portion B1G) (Portion A6, B10.3560, AEL North - Wall, Column & B1 Slab (Portion B1G) (Portion A6, B10.3560, AEL North - Wall, Column & B1 Slab (Portion B1G) (Portion A6, B10.3560, AEL North - Wall, Column & B1 Slab (Portion B1G) (Portion A6, B10.3560, AEL North - Wall, Column & B1 Slab (Portion B1G) (Portion A6, B10.3560, AEL North - Wall, Column & B1 Slab (Portion B1G) (Portion A6, B10.3560, AEL North - Wall, Column & B1 Slab (Portion B1G) (Portion A6, B10.3560, AEL North - Wall, Column & B1 Slab (Portion B1G) (Portion A6, B10.3560, AEL North - Wall, Column & B1 Slab (Portion B1G) (Portion A6, B10.3560, AEL North - Wall, Column & B1 Slab (Portion B1G) (Portion A6, B10.3560, AEL North - Wall, Column & B1 Slab (Portion B1G) (Portion A6, B10.3560, AEL North - Wall, Column & B1 Slab (Portion B1G) (Portion A6, B10.3560, AEL North - Wall, Column & B1 Slab (Portion B1G) (Portion A6, B10.3560, AEL North - Wall, Column & B1 Slab (Portion B1G) (Portion A6, B10.3560, AEL North - Wall, Column & B1 Slab (Portion B1G) (Portion A6, B10.3560, AEL North - Wall, Column & B1 Slab (Portion B1G) (Portion A6, B10.3560, AEL North - Wall, Column & B1 Slab (Portion B1G) (Portion A6, B10.3560, AEL North - Wall, Column & B1 Slab (Portion B1G) (Portion A6, B10.3560, AEL North - Wall, Column & B1 Slab (Portion B1G) (Portion A6, B10.3560, AEL North - Wall, Column & B1 Slab (Portion B1G) (Portion A6, B10.3560, AEL North - Wall, Column & B1 Slab (Portion B1G) (Portion A6, B10.3560, AEL North - Wall, Column & B1 Slab (Portion B1G) (Portion A6, B10.3560, AEL North - Wall, Column & B1 Slab (Portion B1G) (Portion A6, B10.3560, AEL North - Wall, Column & B1 Slab (Portion B1G) (Portion A6, B10.3560, AEL North - Wall, Column & B1 Slab (Portion B1G) (Portion A6, B10.3560, AEL North - Wall, Column & B1 Slab (Portion B1G) (Portion A6, B10.3560, AEL North - Wall, Column & B1 Slab (Portion B1G) (Portion A6, B10.3560, AEL North - Wall, Column & B1 Slab (Portion B1G) (Portion A6, B10.3560, AEL North - Wall, Column & B1 Slab (Portion B1G) (Portion A6, B10.3560, AEL North - Wall, Column & B1 Slab (Portion B1G) (Portion A6, B10.3560, AEL North - Wall, Column & B1 Slab (Portion B1G) (Portion A6, B10.3560, AEL North - Wall, Column & B1 Slab (Portion B1G) (Portion A6, B10.3560, AEL North - Wall, Column & B1 Slab (Portion B1G) (Portion A6, B10.3560, AEL North - Wall, Column & B1 Slab (Portion B1G) (Portion A6, B10.3560, AEL North - Wall, Column & B1 Slab (Portion B1G) (Portion A6, B10.3560, AEL North - Wall, Column & B1 Slab (Portion B1G) (Portion A6, B10.3560, AEL North - Wall, Column & B1 Slab (Portion B1G) (Portion A6, B10.3560, AEL North - Wall, Column & B1 Slab (Portion B1G) (Portion A6, B10.3560, AEL North - Wall, Column & B1 Slab (Portion B1G) (Portion A6, B10.3560, AEL North - Wall, Column & B1 Slab (Portion B1G) (Portion A6, B10.3560, AEL North - Wall, Column & B1 Slab (Portion B1G) (Portion A6, B10.3560, AEL North - Wall, Column & B1 Slab (Portion B1G) (Portion A6, B10.3560, AEL North - Wall, Column & B1 Slab (Portion B1G) (Portion A6, B10.3560, AEL North - Wall, Column & B1 Slab (Portion B1G) (Portion A6, B10.3560, AEL North - Wall, Column & B1 Slab (Portion B1G) (Portion A6, B10.3560, AEL North - Wall, Column & B1 Slab (Portion B1G) (Portion A6, B10.3560, AEL North - Wall, Column & B1 Slab (Portion B1G) (Portion A6, B10.3560, AEL North - Wall, Column & B1 Slab (Portion B1G) (Portion A6, B10.3560, AEL North - Wall, Column & B1 Slab (Portion B1G) (Portion A6, B10.3560, AEL North - Wall, Column & B1 Slab (Portion B1G) (Portion A6, B10.3560, AEL North - Wall, Column & B1 Slab (Portion B1G) (Portion A6, B10.3560, AEL North - Wall, Column & B1 Slab (Portion B1G) (Portion A6, B10.3560, AEL North - Wall, Column & B1 Slab (Portion B1G) (Portion A6, B10.3560, AEL North - Wall, Column & B1 Slab (Portion B1G) (Portion A6, B10.3560, AEL North - Wall, Column & B1 Slab (Portion B1G) (Portion A6, B10.3560, AEL North - Wall, Column & B1 Slab (Portion B1G) (Portion A6, B10.3560, AEL North - Wall, Column & B1 Slab (Portion B1G) (Portion A6, B10.3560, AEL North - Wall, Column & B1 Slab (Portion B1G) (Portion A6, B10.3560, AEL North - Wall, Column & B1 Slab (Portion B1G) (Portion A6, B10.3560, AEL North - Wall, Column & B1 Slab (Portion B1G) (Portion A6, B10.3560, AEL North - Wall, Column & B1 Slab (Portion B1G) (Portion A6, B10.3560, AEL North - Wall, Column & B1 Slab (Portion B1G) (Portion A6, B10.3560, AEL North - Wall, Column & B1 Slab (Portion B1G) (Portion A6, B10.3560, AEL North - Wall, Column & B1 Slab (Portion B1G) (Portion A6, B10.3560, AEL North - Wall, Column & B1 Slab (Portion B1G) (Portion A6, B10.3560, AEL North - Wall, Column & B1 Slab (Portion B1G) (Portion A6, B10.3560, AEL North - Wall, Column & B1 Slab (Portion B1G) (Portion A6, B10.3560, AEL North - Wall, Column & B1 Slab (Portion B1G) (Portion A6, B10.3560, AEL North - Wall, Column & B1 Slab (Portion B1G) (Portion A6, B10.3560, AEL North - Wall, Column & B1 Slab (Portion B1G) (Portion A6, B10.3560, AEL North - Wall, Column & B1 Slab (Portion B1G) (Portion A6, B10.3560, AEL North - Wall, Column & B1 Slab (Portion B1G) (Portion A6, B10.3560, AEL North - Wall, Column & B1 Slab (Portion B1G) (Portion A6, B10.3560, AEL North - Wall, Column & B1 Slab (Portion B1G) (Portion A6, B10.3560, AEL North - Wall, Column & B1 Slab (Portion B1G) (Portion A6, B10.3560, AEL North - Wall, Column & B1 Slab (Portion B1G) (Portion A6, B10.3560, AEL North - Wall, Column & B1 Slab (Portion B1G) (Portion A6, B10.3560, AEL North - Wall, Column & B1 Slab (Portion B1G) (Portion A6, B10.3560, AEL North - Wall, Column & B1 Slab (Portion B1G) (Portion A6, B10.3560, AEL North - Wall, Column & B1 Slab (Portion B1G) (Portion A6, B10.3560, AEL North - Wall, Column & B1 Slab (Portion B1G) (Portion A6, B10.3560, AEL North - Wall, Column & B1 Slab (Portion B1G) (Portion A6, B10.3560, AEL North - Wall, Column & B1 Slab (Portion B1G) (Portion A6, B10.3560, AEL North - Wall, Column & B1 Slab (Portion B1G) (Portion A6, B10.3560, AEL North - Wall, Column & B1 Slab (Portion B1G) (Portion A6, B10.3560, AEL North - Wall, Column & B1 Slab (Portion B1G) (Portion A6, B10.3560, AEL North - Wall, Column & B1 Slab (Portion B1G) (Portion A6, B10.3560, AEL North - Wall, Column & B1 Slab (Portion B1G) (Portion A6, B10.3560, AEL North - Wall, Column & B1 Slab (Portion B1G) (Portion A6, B10.3560, AEL North - Wall, Column & B1 Slab (Portion B1G) (Portion A6, B10.3560, AEL North - Wall, Column & B1 Slab (Portion B1G) (Portion A6, B10.3560, AEL North - Wall, Column & B1 Slab (Portion B1G) (Portion A6, B10.3560, AEL North - Wall, Column & B1 Slab (Portion B1G) (Portion A6, B10.3560, AEL North - Wall, Column & B1 Slab (Portion B1G) (Portion A6, B10.3560, AEL North - Wall, Column & B1 Slab (Portion B1G) (Portion A6, B10.3560, AEL North - Wall, Column & B1 Slab (Portion B1G) (Portion A6, B10.3560, AEL North - Wall, Column & B1 Slab (Portion B1G) (Portion A6, B10.3560, AEL North - Wall, Column & B1 Slab (Portion B1G) (Portion A6, B10.3560, AEL North - Wall, Column & B1 Slab (Portion B1G) (Portion A6, B10.3560, AEL North - Wall, Column & B1 Slab (Portion B1G) (Portion A6, B10.3560, AEL North - Wall, Column & B1 Slab (Portion B1G) (Portion A6, B10.3560, AEL North - Wall, Column & B1 Slab (Portion B1G) (Portion A6, B10.3560, AEL North - Wall, Column & B1 Slab (Portion B1G) (Portion A6, B10.3560, AEL North - Wall, Column & B1 Slab (Portion B1G) (Portion A6, B10.3560, AEL North - Wall, Column & B1 Slab (Portion B1G) (Portion A6, B10.3560, AEL North - Wall, Column & B1 Slab (Portion B1G) (Portion A6, B10.3560, AEL North - Wall, Column & B1 Slab (Portion B1G) (Portion A6, B10.3560, AEL North - Wall, Column & B1 Slab (Portion B1G) (Portion A6, B10.3560, AEL North - Wall, Column & B1 Slab (Portion B1G) (Portion A6, B10.3560, AEL North - Wall, Column & B1 Slab (Portion B1G) (Portion A6, B10.3560, AEL North - Wall, Column & B1 Slab (Portion B1G) (Portion A6, B10.3560, AEL North - Wall, Column & B1 Slab (Portion B1G) (Portion A6, B10.3560, AEL North - Wall, Column & B1 Slab (Portion B1G) (Portion A6, B10.3560, AEL North - Wall, Column & B1 Slab (Portion B1G) (Portion A6, B10.3560, AEL North - Wall, Column & B1 Slab (Portion B1G) (Portion A6, B10.3560, AEL North - Wall, Column & B1 Slab (Portion B1G) (Portion A6, B10.3560, AEL North - Wall, Column & B1 Slab (Portion B1G) (Portion A6, B10.3560, AEL North - Wall, Column & B1 Slab (Portion B1G) (Portion A6, B10.3560, AEL North - Wall, Column & B1 Slab (Portion B1G) (Portion A6, B10.3560, AEL North - Wall, Column & B1 Slab (Portion B1G) (Portion A6, B10.3560, AEL North - Wall, Column & B1 Slab (Portion B1G) (Portion A6, B10.3560, AEL North - Wall, Column & B1 Slab (Portion B1G) (Portion A6, B10.3560, AEL North - Wall, Column & B1 Slab (Portion B1G) (Portion A6, B10.																										

Activity ID		Activity Name	Ori. Dur.	BaseLine Start	BaseLine Finish	Forecast / Actual Start	Forecast / Actual Finish	% Compl.	Finish Variance	Current Float	September 2016				October 2016				November 2016				December 2016				January 2017		
											04	11	18	25	02	09	16	23	30	06	13	20	27	04	11	18	25	01	08
	C10.0215	AEL Tunnel Zone - Truss 5 install bottom steel plates	24	08-Oct-16	09-Nov-16	21-Nov-16	17-Dec-16	0%	-33	-48																			
	C10.0220	AEL Tunnel Zone - Truss 5 install temp. platform, top nodes & i	24	10-Nov-16	07-Dec-16	19-Dec-16	18-Jan-17	0%	-33	-48																			
AEL South - Trusses 3																													
	B6A.1999	AEL Tunnel Zone - Construct Composite/RC Columns for Truss	20			08-Aug-16 A	11-Nov-16	20%		-42																			
	B6A.2000	AEL South - Erection of Temp Working Platform and Falsework	27	20-Jul-16	15-Sep-16	31-Oct-16*	30-Nov-16	0%	-62	-42																			
	B6A.2030	AEL South - Truss 3 Concreting of 1st pour of bottom chord (75	12	17-Sep-16	04-Oct-16	30-Dec-16	13-Jan-17	0%	-83	-42																			
	B6A.2020	AEL South - Truss 3 Construction Summary	135	17-Sep-16	21-Mar-17	30-Dec-16	16-Jun-17	0%	-69	-42																			
AEL South - Trusses 4																													
	B6A.2024	AEL Tunnel Zone - Construct Composite Columns for Truss T4	21			08-Aug-16 A	25-Nov-16	30%		-32																			
	B6A.2025	AEL South - Erection of Temp Working Platform and Falsework	30	02-Aug-16	29-Sep-16	31-Oct-16	03-Dec-16	0%	-54	-34																			
	B6A.2040	AEL South - Truss 4 Concreting of 1st pour of bottom chord (75	12	30-Sep-16	20-Oct-16	30-Dec-16	13-Jan-17	0%	-70	-42																			
	B6A.2035	AEL South - Truss 4 Construction Summary	105	30-Sep-16	14-Feb-17	30-Dec-16	12-May-17	0%	-69	-42																			
G/F Slabs - Walls, Columns & G/F Slab																													
AEL North																													
	B20.0000	Podium G/F Portion GF1A - Wall, Column & G/F slab (GL 8-10/.	18	16-Aug-16	10-Sep-16	04-Nov-16	24-Nov-16	0%	-61	-37																			
	B20.0015	Podium G/F Portion GF1 - Wall, Column & G/F slab (GL 4-7/A-I	23	19-Sep-16	24-Oct-16	17-Nov-16	13-Dec-16	0%	-43	-38																			
	B20.0005	Podium G/F Portion GF1 Tower Footprint - Wall, Column & Stru	14	12-Sep-16	03-Oct-16	18-Nov-16	03-Dec-16	0%	-52	-37																			
	B20.0050	Podium G/F Portion GF2 - Wall, Column & G/F slab (GL 1-4/A-I	23	25-Oct-16	21-Nov-16	14-Dec-16	12-Jan-17	0%	-42	-38																			
1/F Slabs - Walls, Columns & 1/F Slab																													
AEL North																													
	B20.0425	Podium 1/F Tower Footprint (Block A) - Core Wall, Column & 1/	18	04-Oct-16	31-Oct-16	05-Dec-16	27-Dec-16	0%	-47	-37																			
1M/F Slabs - Walls, Columns & 1M/F Structure																													
M+ Tower FootPrint																													
	B20.0010	Podium 1M/F Tower Footprint (Block A) - Core Walls, Column &	18	01-Nov-16	21-Nov-16	28-Dec-16	18-Jan-17	0%	-47	-37																			
SPS Structures (include Excavation)																													
	D01.3010	SPS - Construct Basement Structure	100	27-Apr-16	26-Aug-16	25-Jul-16 A	30-Nov-16	12%	-79	-83																			
ICP Structures (include Excavation)																													
	A3980	ICP - ELS works (Provisional)	110	22-Feb-16	26-Jul-16	20-May-16 A	08-Nov-16	30%	-70	-65																			
	A4490	ICP - Structure works	244	28-Jul-16	24-Jun-17	25-Jul-16 A	03-Oct-17	12%	-65	-65																			
Building Services																													
M+ Basement Building Service																													
B2/F MEP																													
First Fix																													
	B40.8985	Early Access for Building Services (1st Fix)	0	05-Oct-16		27-Nov-16		0%	-53	177																			
	B40.8990	B2/F - Building Services - Zone A - 1st Fix	60	05-Oct-16	14-Dec-16	28-Nov-16	11-Feb-17	0%	-45	139																			
	B40.8995	B2/F - Building Services - 1st Fix - Summary	261	05-Oct-16	24-Jul-17	28-Nov-16	16-Oct-17	0%	-70	-51																			
	B40.9030	B2/F - Building Services - Zone C - 1st Fix	40	06-Dec-16	24-Jan-17	17-Dec-16	08-Feb-17	0%	-10	128																			
SPS MEP																													
	D01.3020	SPS - Installation of Sewage/Drainage Pipes and Manholes	70	27-Aug-16	19-Nov-16	01-Dec-16	27-Feb-17	0%	-79	-83																			
ABWF																													
M+ Basement ABWF																													
B2/F ABWF																													
	B30.0006	B2/F Zone A - Builder's Work	42	15-Aug-16	04-Oct-16	08-Oct-16	26-Nov-16	0%	-45	106																			

Activity ID		Activity Name	Ori. Dur.	BaseLine Start	BaseLine Finish	Forecast / Actual Start	Forecast / Actual Finish	% Compl.	Finish Variance	Current Float	September 2016				October 2016				November 2016				December 2016				January 2017		
											04	11	18	25	02	09	16	23	30	06	13	20	27	04	11	18	25	01	08
	B30.0004	Early Access date for Builders Works at B2/F M+ Basement	0	15-Aug-16		08-Oct-16		0%	-54	132																			
	B30.0020	B2/F Zone C - Builder's Work	42	11-Oct-16	28-Nov-16	29-Oct-16	16-Dec-16	0%	-16	73																			
	B30.0040	B2/F Zone E - Builder's Work	42	27-Sep-16	16-Nov-16	21-Nov-16	11-Jan-17	0%	-45	89																			
	B30.0050	B2/F Zone F - Builder's Work	42	09-Nov-16	29-Dec-16	21-Nov-16	11-Jan-17	0%	-10	77																			
	B30.0010	B2/F Zone B - Builder's Work	42	28-Nov-16	18-Jan-17	30-Nov-16	20-Jan-17	0%	-2	81																			
External Works																													
M+ External Works																													
Utilities																													
Drainage																													
	EW1045	Construct M+ manholes S1.1, S3.2, S3.3, S3.4 (terminal)	91	10-Dec-15	09-Mar-16	30-Sep-16	25-Jan-17	0%	-231	463																			
	EW1010	Construct the DN375 and DN600 storm drains within the At-gr.	75	10-Dec-15	14-Mar-16	30-Sep-16	06-Jan-17	0%	-211	32																			
Storm Drain DN600 at Portion M45																													
Storm Drain along Gridline D'-E'/1'-2'																													
	EW1700	Fence off work area for DN600 storm drain excavation	1			30-Sep-16	30-Sep-16	0%		244																			
	EW1695	PIW handover of WHC6_1c for M+ connection	0			30-Sep-16*		0%		-92																			
	EW1705	Excavate trial trench for existing Underground Utilities	14			30-Sep-16	22-Oct-16	0%		244																			
	EW1708	Intall support to exisiting Underground Utilities	7			24-Oct-16	01-Nov-16	0%		244																			
	EW1710	Excavate trench for DN600 and install shoring	10			02-Nov-16	12-Nov-16	0%		244																			
	EW1730	Lay down DN600 pipe between WHC6_1c & MHS3.4	7			14-Nov-16	21-Nov-16	0%		244																			
	EW1740	Backfill and reinstate pavement	2			22-Nov-16	23-Nov-16*	0%		244																			
Storm Drain along Gridline E'-G' / 1'-2'																													
	EW1765	Complete B2 Slab, Columns & & Walls at A6 & A7	0			06-Nov-16*		0%		360																			
	EW1755	Excavate Trial trench for exisitng Underground Utilities	14			24-Nov-16	09-Dec-16	0%		244																			
	EW1758	Install support to existing Underground Utilities	7			10-Dec-16	17-Dec-16	0%		244																			
	EW1760	Excavate trench for DN600 at gridline E'-G' / 1' and install shor	10			19-Dec-16	31-Dec-16	0%		244																			
Storm Drain DN375 at Portion M45																													
Storm Drain along Gridline A-K' / 5'																													
	EW6110	Fence off Work area for DN375 storm drain excavation	1			30-Sep-16	30-Sep-16	0%		303																			
	EW1640	PIW handover of WHC6_1e for M+ connection	0				30-Sep-16*	0%		-59																			
	EW1615	Excavate Trial Trench for existing Underground Utilities	14			30-Sep-16	22-Oct-16	0%		303																			
	EW1618	Install support to exisiting underground Utilities	14			24-Oct-16	09-Nov-16	0%		303																			
	EW6120	Excavate trench for DN375 and install shoring	15			10-Nov-16	26-Nov-16	0%		303																			
	EW6140	Lay down DN375 pipe between WHC6_1e	12			28-Nov-16	10-Dec-16	0%		303																			
	EW6150	Backfill and reinstate pavement	4			12-Dec-16	15-Dec-16*	0%		303																			
Storm Drain DN150 at Portion M45																													
Storm Drain along Gridline A / 5' - 6'																													
	EW1900	PIW handover of WHC6_1f for M+ connection	0				30-Sep-16*	0%		-50																			
	EW1910	Fence off work area for DN150 storm drain excavation	1			30-Sep-16	30-Sep-16	0%		321																			
	EW1915	Excavate Trial Trench fo exisiting Underground Utilities	14			03-Oct-16	24-Oct-16	0%		321																			
	EW1930	Install support to exisiting Underground Utilities	8			25-Oct-16	03-Nov-16	0%		321																			
	EW1920	Excavate trench for DN150 and install shoring	6			04-Nov-16	10-Nov-16	0%		321																			
	EW1940	Lay down DN150 and connect to WHC6_1f	9			11-Nov-16	21-Nov-16	0%		321																			
	EW1950	Backfill and reinstate pavement	3			22-Nov-16	24-Nov-16*	0%		321																			

[illegible]

Activity ID	Activity Name	Ori. Dur.	BaseLine Start	BaseLine Finish	Forecast / Actual Start	Forecast / Actual Finish	% Compl.	Finish Variance	Current Float	September 2016				October 2016				November 2016				December 2016				January 2017	
										04	11	18	25	02	09	16	23	30	06	13	20	27	04	11	18	25	01
EW1035	Take Possession date of M45 (M45 IS Appendix D1, 31 July 16)	0			30-Sep-16*		0%		-61	Take Possession date of M45 (M45 IS Appendix D1, 31 July 16), 30-Sep-16*																	
WSD																											
Water Main Works at Portion M45																											
EW1147	Watermain (FH-CH250) interface : M+Planned date (1 Jun16)	0			30-Sep-16*		0%		-121	Watermain: (FH-CH250) interface : M+Planned date (1 Jun16), 30-Sep-16*																	
EW1150	PIW Contractor Handover Portion M45 to HCC (IS Appendix D1,	0			30-Sep-16*		0%		-61	PIW Contractor Handover Portion: M45 to HCC (IS Appendix D1, item 36, 31 July 16), 30-Sep-16*																	
EW1160	Remove existing hoarding fixed to Sheet pile	14			30-Sep-16	22-Oct-16	0%		34	Remove existing hoarding fixed to Sheet pile																	
EW1170	Install a new hoarding with 500mm clearance from roadside	7			24-Oct-16	01-Nov-16	0%		34	Install a new hoarding with 500mm clearance from roadside																	
EW1180	Excavate Trench to expose watermains by PIW & install shoring	7			02-Nov-16	09-Nov-16	0%		34	Excavate Trench to expose watermains by PIW & install shoring																	
EW1190	Cut down sheet piles for water pipe connections	7			10-Nov-16	17-Nov-16	0%		34	Cut down sheet piles for water pipe connections																	
EW1510	Construct Incoming Water Mains (1- DN100 salt water)	21			18-Nov-16	12-Dec-16*	0%		34	Construct Incoming Water Mains (1- DN100 salt water)																	
EW1500	Construct Incoming Water Mains (2- DN150 Fresh Water)	21			18-Nov-16	12-Dec-16*	0%		34	Construct Incoming Water Mains (2- DN150 Fresh Water)																	
Water Main Works at Portion M01																											
EW6090	Construct the incoming water mains (two DN150 fresh water, &	90			13-Dec-16	03-Apr-17	0%		34	Construct the incoming water mains (two DN150 fresh water, &																	
Telecom																											
EW1080	Lay Telecom FTNS duct and complete pits connection	72	27-Jun-16	18-Oct-16	22-Oct-16	18-Jan-17	0%	-74	248	Lay Telecom FTNS duct and complete pits connection																	
CLP																											
EW1090	Excavate trench in footway for the 11kV direct buried cables	12	02-Jun-16	18-Jun-16	30-Sep-16	20-Oct-16	0%	-79	477	EW1090, Excavate trench in footway for the 11kV direct buried cables																	
EW1100	Lay 11kV power cable by CLP (by others)	25	20-Jun-16	28-Jul-16	21-Oct-16	19-Nov-16	0%	-79	477	EW1100, Lay 11kV power cable by CLP (by others)																	
EW1110	Backfilling footway to adjacent ground level	6	29-Jul-16	06-Aug-16	21-Nov-16	26-Nov-16	0%	-79	477	EW1110, Backfilling footway to adjacent ground level																	
EW1120	Allow Access for PIW Contractor to carry out works for 132kV ca	0	07-Aug-16		27-Nov-16		0%	-112	664	Allow Access for PIW Contractor to carry out works for 132kV cables																	
EW1130	Lay 132kV cable by CLP (by others)	25	08-Aug-16	12-Sep-16	28-Nov-16	28-Dec-16	0%	-79	477	EW1130, Lay 132kV cable by CLP (by others)																	
EW1140	Backfilling footway to adjacent ground level	6	13-Sep-16	22-Sep-16	29-Dec-16	05-Jan-17	0%	-79	477	EW1140, Backfilling footway to adjacent ground level																	
Entrance Portal Area																											
EW2000	Entrance Portal Area - Dewatering Complete	0		08-Nov-16		19-Nov-16	0%	-11	26	Entrance Portal Area - Dewatering Complete																	
EW2010	Entrance Portal Area - Excavation	20	09-Nov-16	01-Dec-16	21-Nov-16	13-Dec-16	0%	-10	22	EW2010, Entrance Portal Area - Excavation																	
EW2020	Entrance Portal Area - Construct Entrance Portal Area to B1 Str	30	17-Nov-16	22-Dec-16	29-Nov-16	05-Jan-17	0%	-10	22	EW2020, Construct Entrance Portal Area to B1 Street																	
Sea Water Drainage Pipe																											
EW3000	Take Possession of M15,M16, M38 & M39	0	02-Sep-16		30-Sep-16		0%	-28	538	Take Possession of M15,M16, M38 & M39, Take Possession of M15,M16, M38 & M39																	
EW3010	Install Seawater Discharge Pipes in Portions M15, M16, M38 &	120	02-Sep-16	09-Feb-17	30-Sep-16	03-Mar-17	0%	-19	398	Install Seawater Discharge Pipes in Portions M15, M16, M38 & M39																	
EW3040	Install Seawater Discharge Pipes in Portions M41 & M42	130	03-Oct-16	16-Mar-17	30-Sep-16	15-Mar-17	0%	1	438	Install Seawater Discharge Pipes in Portions M41 & M42																	
EW3030	Take Possession of Site Portion M41 & M42	0	03-Oct-16		30-Sep-16		0%	3	593	Take Possession of Site Portion M41 & M42, Take Possession of Site Portion M41 & M42																	
Sea Water Drainage Pipe																											
Seawater Intake and Outfall Pipeworks																											
EW8960	Take Possession of M38 & M39 (Appendix D2. 31Aug16)	0			30-Sep-16*		0%		-30	Take Possession of M38 & M39 (Appendix D2. 31Aug16), 30-Sep-16*																	
EW8980	Take Possession of Site Portion M41 & M42 (Appendix D2, 1Oct	0			01-Oct-16*		0%		0	Take Possession of Site Portion M41 & M42 (Appendix D2, 1Oct16), 01-Oct-16*																	
Seawater outfall pipeworks underground section Ch0 - 108 (starting from Ch108)																											
EW3080	Trial Pits and trenches for exposing Underground Utilities	40			30-Sep-16	23-Nov-16	0%		158	Trial Pits and trenches for exposing Underground Utilities																	
EW3090	Detailed design for trench lateral support and underground utili	14			15-Oct-16	02-Nov-16	0%		158	Detailed design for trench lateral support and underground utilities																	
EW3100	Driving of sheet piles	32			03-Nov-16	09-Dec-16	0%		158	Driving of sheet piles																	
EW3110	Pre-boring for overcoming underground obstructions	20			09-Nov-16	02-Dec-16	0%		159	Pre-boring for overcoming underground obstructions																	
EW3120	Excavation for installing 1st layer of walings and struts	10			03-Dec-16	15-Dec-16	0%		158	Excavation for installing 1st layer of walings and struts																	
EW3130	Installing 1st layer of walings and struts	18			10-Dec-16	03-Jan-17	0%		158	Installing 1st layer of walings and struts																	
EW3140	Hanging and supporting of existing underground KGO and othe	9			16-Dec-16	29-Dec-16	0%		161	Hanging and supporting of existing underground KGO and other																	
Ch105 to 108, for future connections by Lyric (trench fromation -3.6mPD)																											

[illegible]

Lyric Theatre Complex

Activity ID	Activity Name		Durn. (Days)	Programme Rev A Start	Programme Rev A Finish	Current / Actual Start	Current / Actual Finish	Physical % Complete	Finish Variance	Float (Days)	2016												2017											
											Jan	Feb	Mar	Apr	May	Jun	Jul	Aug	Sep	Oct	Nov	Dec	Jan	Feb	Mar	Apr	May	Jun	Jul	Aug	Sep	Oct	Nov	
											1	2	3	4	5	6	7	8	9	10	11	12	13	14	15	16	17	18	19	20	21	22	23	

F2 Foundation Works for Lyric Theatre Complex

Summary for Major Works

Pre-bored H-Pile

Pre-bored H-Pile Construction

LT.0087	Trial Pile and Obtain BD's Acknowledgement	18	22-Feb-16	12-Mar-16	08-Mar-16 A	09-Mar-16 A	100%	4	
LT.0088	Predrilling, Excluding Portions L02 and L03; 56 nos.	71	20-Feb-16	20-May-16	01-Mar-16 A	13-Jul-16 A	100%	-43	
LT.0089	Pre-bored H-Pile Construction; Rig 1, 121 nos	243	01-Apr-16	21-Jan-17	17-Mar-16 A	10-Feb-17	62%	-14	5
LT.2225	Pre-bored H-Pile Construction; Rig 2, 101 nos	255	01-Apr-16	08-Feb-17	30-Mar-16 A	13-Feb-17	67%	-4	1
LT.2226	Pre-bored H-Pile Construction; Rig 3, 25 nos	25	01-Apr-16	30-Apr-16	30-Apr-16 A	05-Jul-16 A	100%	-51	
LT.3315	Pre-bored H-Pile Construction; Rig 3, 8 nos	24			23-Sep-16 A	22-Oct-16 A	100%		
LT.3340	Pre-bored H-Pile Construction; Rig 4, 6 nos	13			27-Sep-16 A	14-Oct-16 A	100%		

Contract Administrator's Instruction No. 8

LT.3010	Predrilling in Portions L02 and L03; 14 nos.	30	14-Oct-16	17-Nov-16	08-Aug-16 A	01-Sep-16 A	100%	64	
LT.3015	Pre-bored H-Pile Construction; Rig 1, 31 nos	65	14-Feb-17	06-May-17	11-Feb-17	04-May-17	0%	2	5
LT.3020	Pre-bored H-Pile Construction; Rig 2, 32 nos	67	14-Feb-17	09-May-17	14-Feb-17	09-May-17	0%	0	1

BA14 and Testing

LT.0094	Submission of BA14	6	06-Jun-17	12-Jun-17	06-Jun-17	12-Jun-17	0%	0	1
LT.0095	CA's Selection of Proof Drilling Locations	14	09-May-17	23-May-17	09-May-17	23-May-17	0%	0	1
LT.0096	Proof Drilling	14	23-May-17	06-Jun-17	23-May-17	06-Jun-17	0%	0	1
LT.0097	BD's Selection of Test Piles	28	12-Jun-17	10-Jul-17	12-Jun-17	10-Jul-17	0%	0	1
LT.0098	Load Testing and Submit Reports	32	10-Jul-17	11-Aug-17	10-Jul-17	11-Aug-17	0%	0	1
LT.0099	BD's Acknowledgement	45	11-Aug-17	25-Sep-17	11-Aug-17	25-Sep-17	0%	0	18

Bored Pile

Bored Pile Construction

LT.0102	Predrilling, Excluding Portions L02 and L03; 145 nos.	125	20-Feb-16	25-Jul-16	02-Mar-16 A	02-Sep-16 A	100%	-33	
LT.0103	Bored Pile Construction; RCD Rig 1, 29 nos.	244	07-Apr-16	27-Jan-17	12-Mar-16 A	02-Mar-17	70%	-26	66
LT.1895	Bored Pile Construction; RCD Rig 2, 26 nos.	268	18-Mar-16	13-Feb-17	17-Mar-16 A	07-Mar-17	61%	-19	65
LT.1905	Bored Pile Construction; RCD Rig 3, 23 nos.	243	14-Apr-16	06-Feb-17	21-Mar-16 A	10-Feb-17	65%	-4	86
LT.1915	Bored Pile Construction; RCD Rig 4, 22 nos.	245	29-Mar-16	20-Jan-17	23-Mar-16 A	10-Mar-17	62%	-39	62
LT.1925	Bored Pile Construction; RCD Rig 5, 22 nos.	200	28-Apr-16	24-Dec-16	26-Apr-16 A	21-Jan-17	64%	-21	100
LT.1935	Bored Pile Construction; RCD Rig 6, 10 nos.	175	12-Jul-16	10-Feb-17	13-Jul-16 A	21-Feb-17	30%	-9	77
LT.1945	Bored Pile Construction; RCD Rig 7, 13 nos.	146	14-Jul-16	06-Jan-17	22-Jul-16 A	17-Jan-17	51%	-9	-4
LT.2215	Sonic Logging and Interface Coring Test; Excluding Portions L02 and L03	145	10-Sep-16	08-Mar-17	06-Oct-16 A	18-Apr-17	6%	-31	45
LT.3260	Completion of Bored Pile Construction in Area 6	0				17-Jan-17	0%		-4

Contract Administrator's Instruction No. 8

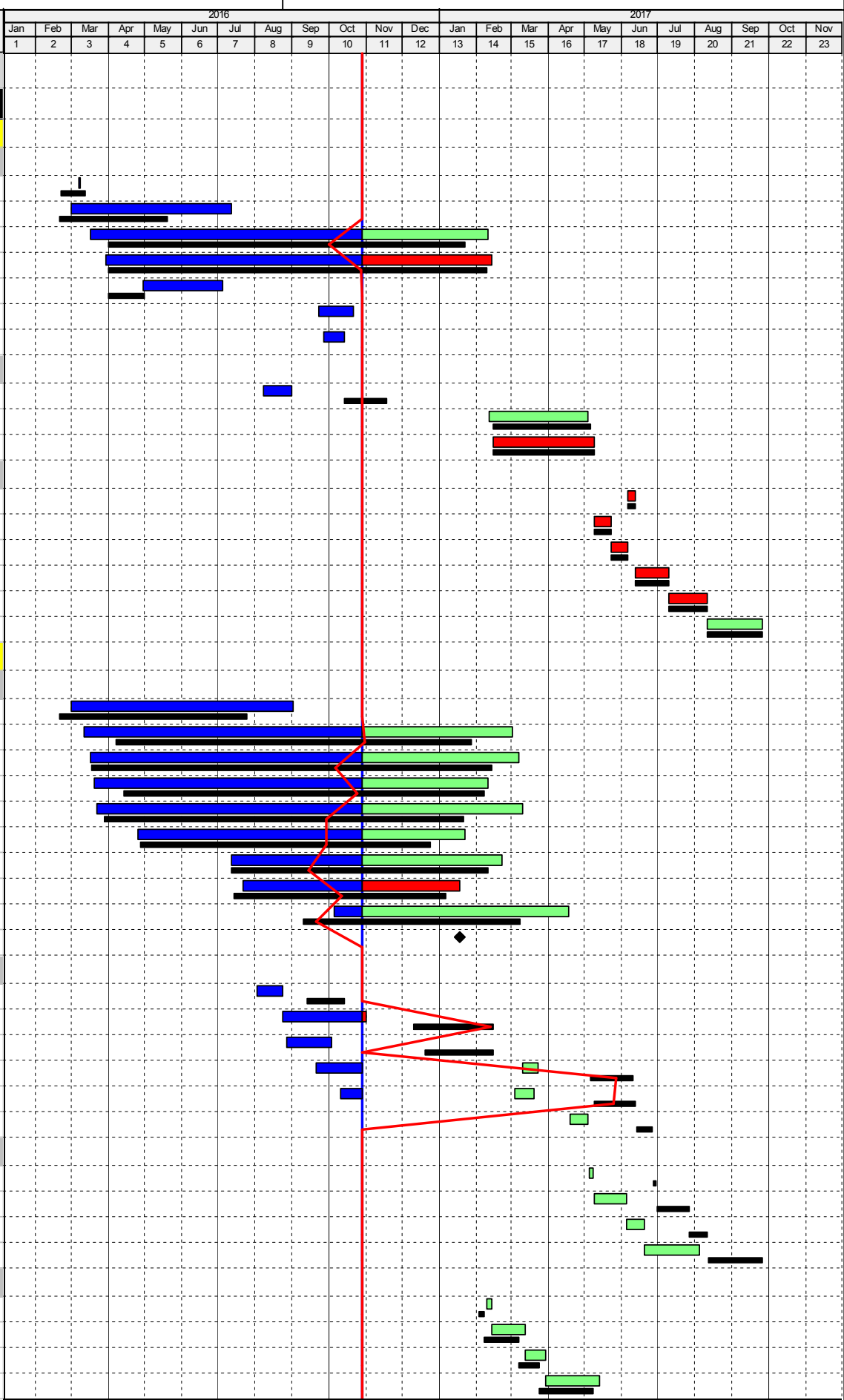
LT.2891	Predrilling in Portions L02 and L03; 11 nos.	24	13-Sep-16	13-Oct-16	03-Aug-16 A	24-Aug-16 A	100%	41	
LT.2895	Bored Pile Construction; RCD Rig 4, 4 nos.	51	10-Dec-16	14-Feb-17	24-Aug-16 A	01-Nov-16	97%	84	-4
LT.2905	Bored Pile Construction; RCD Rig 1, 3 nos.	43	20-Dec-16	14-Feb-17	27-Aug-16 A	04-Oct-16 A	100%	108	
LT.2915	Bored Pile Construction; RCD Rig 4, 2 nos.	30	06-May-17	10-Jun-17	21-Sep-16 A	23-Mar-17	62%	61	63
LT.2925	Bored Pile Construction; RCD Rig 1, 2 nos.	29	09-May-17	12-Jun-17	11-Oct-16 A	20-Mar-17	48%	65	66
LT.2935	Sonic Logging and Interface Coring Test; Portions L02 and L03	12	13-Jun-17	26-Jun-17	19-Apr-17	04-May-17	0%	44	45

BA14 and Testing

LT.0108	Submission of BA14	3	27-Jun-17	29-Jun-17	05-May-17	08-May-17	0%	44	45
LT.0109	BD's Selection of Test Piles	28	30-Jun-17	27-Jul-17	09-May-17	05-Jun-17	0%	52	53
LT.0110	Concrete Coring Test and Submit Reports	13	27-Jul-17	11-Aug-17	05-Jun-17	20-Jun-17	0%	44	45
LT.0111	BD's Acknowledgement	45	12-Aug-17	25-Sep-17	20-Jun-17	04-Aug-17	0%	52	70

BA14 and Testing at Area 6 if Option is Exercised

LT.0113	Submission of BA14	3	03-Feb-17	07-Feb-17	09-Feb-17	13-Feb-17	0%	-5	19
LT.0114	BD's Selection of Test Piles	28	07-Feb-17	07-Mar-17	13-Feb-17	13-Mar-17	0%	-6	22
LT.0115	Concrete Coring Test and Submit Reports	15	07-Mar-17	24-Mar-17	13-Mar-17	30-Mar-17	0%	-5	19
LT.3110	BD's Acknowledgement	45	24-Mar-17	08-May-17	30-Mar-17	14-May-17	0%	-6	91



Activity ID	Activity Name	Durn. (Days)	Programme Rev A Start	Programme Rev A Finish	Current / Actual Start	Current / Actual Finish	Physical % Complete	Finish Variance	Float (Days)	2016												2017																																																																																																																																																																																																																																																																																																																																																																																																																																																																																																																																																																																																																																																																																																																																																																																																																																																																																																																																																																																																																																																																																																																																																																																																																																																																																																				
										Jan	Feb	Mar	Apr	May	Jun	Jul	Aug	Sep	Oct	Nov	Dec	Jan	Feb	Mar	Apr	May	Jun	Jul	Aug	Sep	Oct	Nov																																																																																																																																																																																																																																																																																																																																																																																																																																																																																																																																																																																																																																																																																																																																																																																																																																																																																																																																																																																																																																																																																																																																																																																																																																																																																										
										1	2	3	4	5	6	7	8	9	10	11	12	13	14	15	16	17	18	19	20	21	22	23																																																																																																																																																																																																																																																																																																																																																																																																																																																																																																																																																																																																																																																																																																																																																																																																																																																																																																																																																																																																																																																																																																																																																																																																																																																																																										
Excavation and Lateral Support																																																																																																																																																																																																																																																																																																																																																																																																																																																																																																																																																																																																																																																																																																																																																																																																																																																																																																																																																																																																																																																																																																																																																																																																																																																																																																																										