



LR2.27 Amenity Planting within the private development at the Kowloon Station
Photo 1



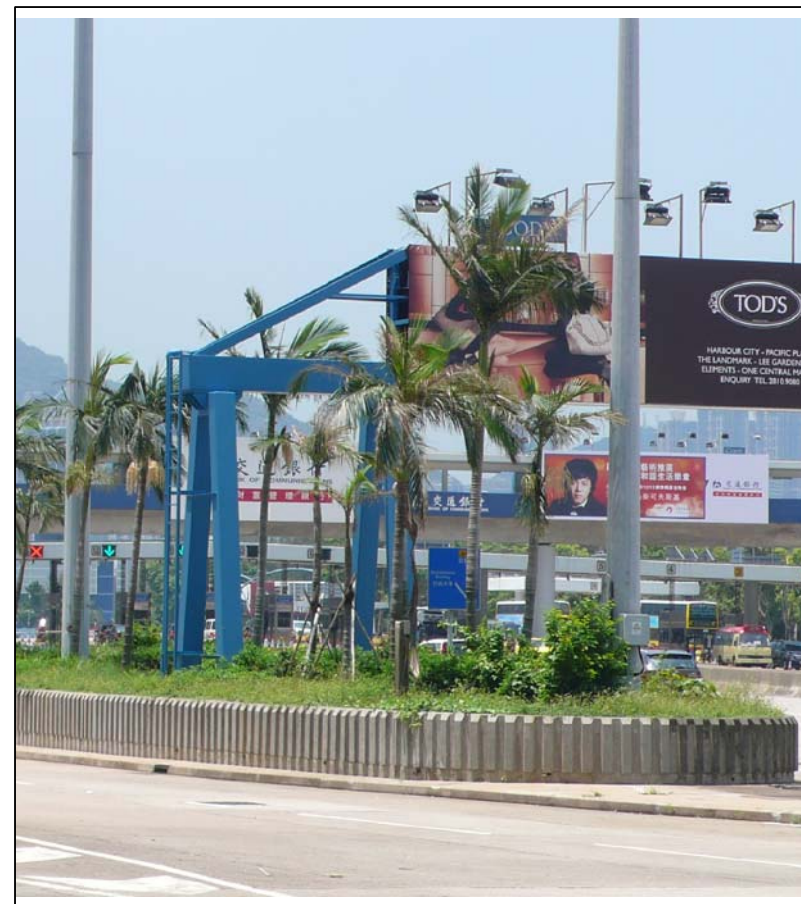
LR2.27 Amenity Planting within the private development at the Kowloon Station
Photo 2



LR2.27 Amenity Planting within the private development at the Kowloon Station
Photo 3



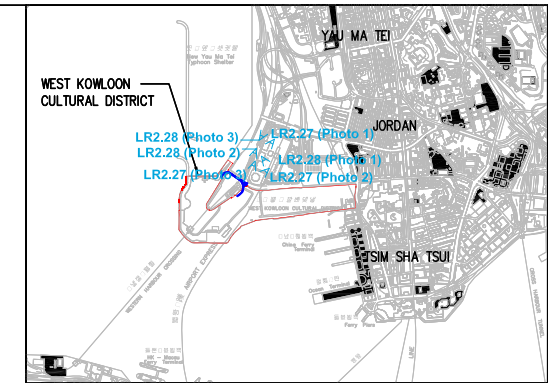
LR2.28 Roadside Plantation along Western Harbour Crossing Bus Stop near Element
Photo 1



LR2.28 Roadside Plantation along Western Harbour Crossing Bus Stop near Element
Photo 2



LR2.28 Roadside Plantation along Western Harbour Crossing Bus Stop near Element
Photo 3



KEY PLAN

Rev	Date	Drawn	Description	Ch'k'd	App'd

Client
WEST KOWLOON CULTURAL DISTRICT AUTHORITY

Mott MacDonald
20/F Two Landmark East
100 Hoi Ming Street
Kwun Tong, Kowloon
Hong Kong
T +852 2828 6757
F +852 2827 1823
W www.mottmac.com.hk

ARTEC IMG Artists Lord
TFP | FARRELLS G | H | K
creative thinking positive solutions MVA
DONNELL
LD ASIA BMT

Project
PROJECT CONSULTANCY STUDY FOR WEST KOWLOON CULTURAL DISTRICT DEVELOPMENT PLAN

Title
BASELINE LANDSCAPE RESOURCES PHOTO RECORD (SHEET 3 OF 6)

Designed		Eng check	
Drawn		Coordination	
Dwg check		Approved	
Scale at A3 NTS	Status		Rev

Drawing Number
Figure 15.10.3c