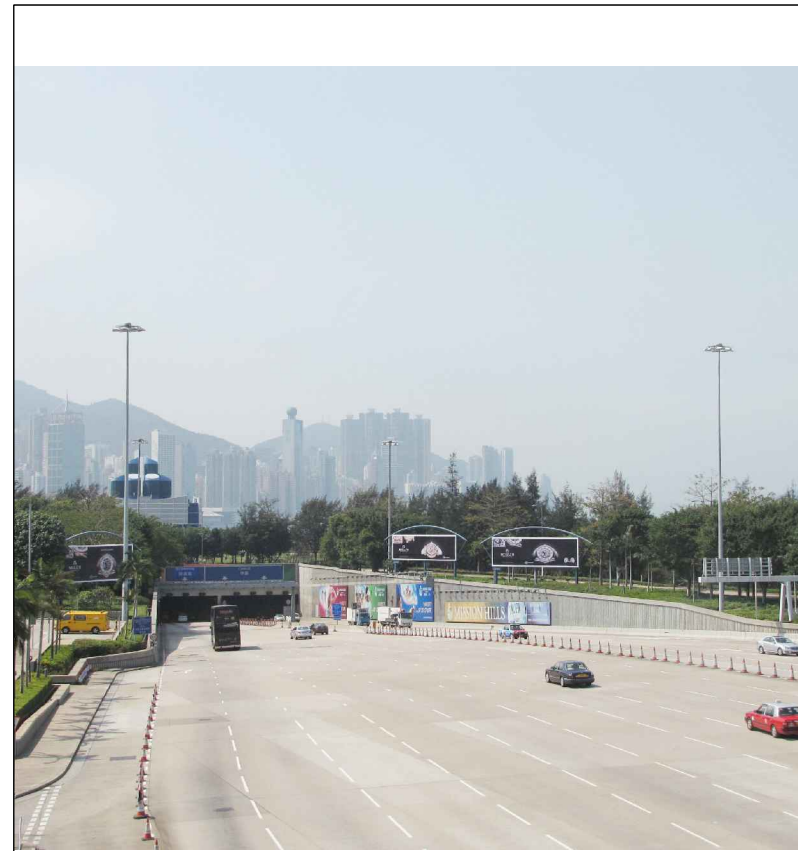
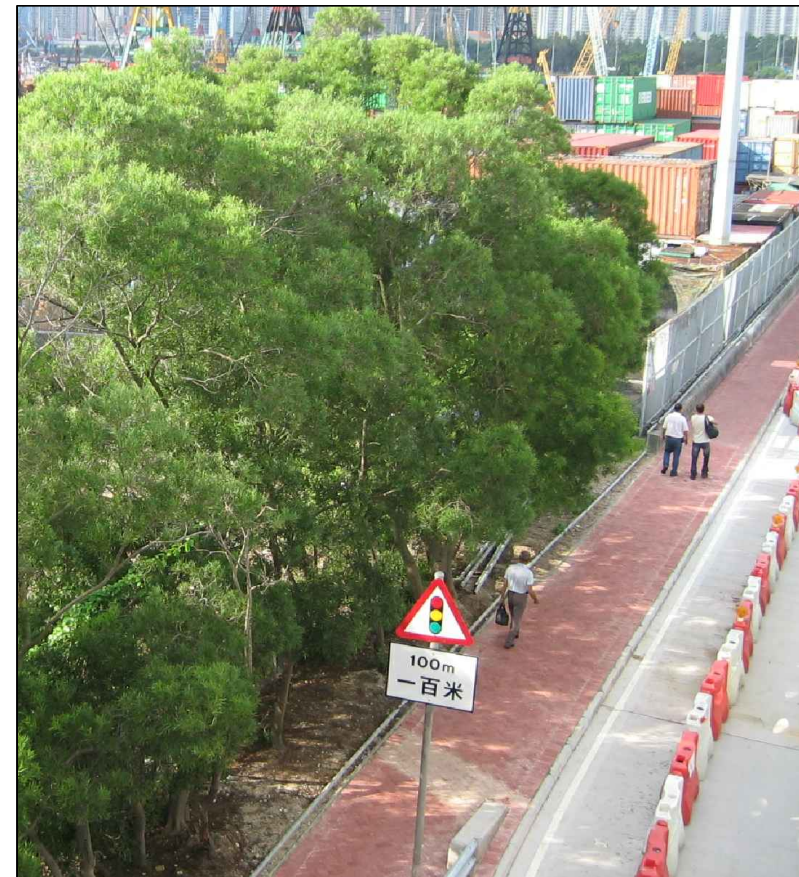




LR2.30 Roadside Plantation next to Western Harbour Tunnel Administration Photo 1



LR2.31 Tree Buffering Western Harbour Tunnel Entrance Photo 1



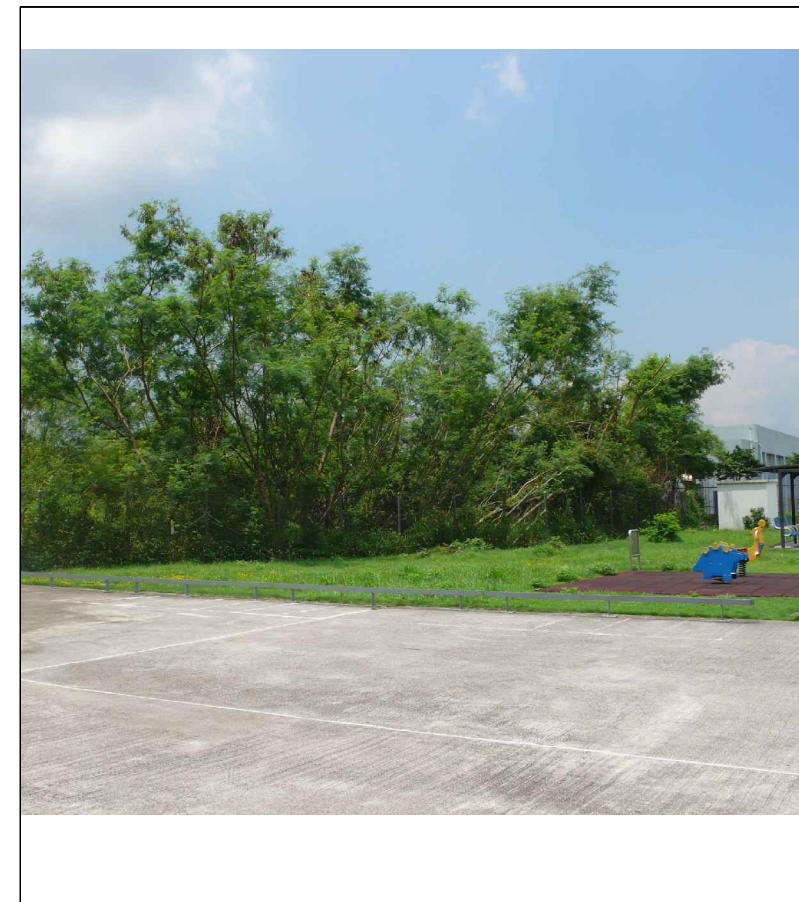
LR2.32 Roadside Platanation along Western Harbour Crossing Bus Stop next to New Yau Ma Tei Typhoon Shelter Photo 1



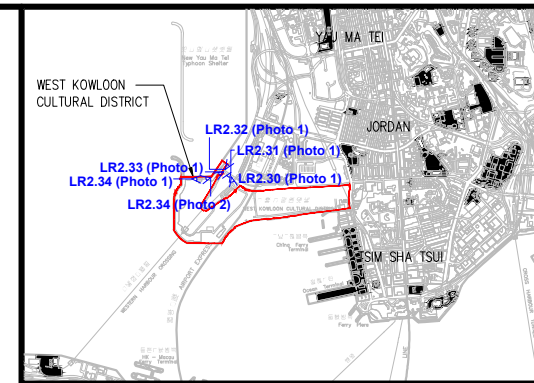
LR2.33 Trees along New Yau Ma Tei Typhoon Shelter Pier Photo 1



LR2.34 Amenity Planting within Salt Water Pumping Station Photo 1



LR2.34 Amenity Planting within Salt Water Pumping Station Photo 2



KEY PLAN

Rev	Date	Drawn	Description	Scale

Client
WEST KOWLOON CULTURAL DISTRICT AUTHORITY

Mott MacDonald
20/F Two Landmark East
180 How Ming Street
Kowloon, Kowloon
Hong Kong
T: +852 2500 6267
F: +852 2500 1888
W: www.mottmac.com/hk

ARTEC | IMG Artists | Lord
TFP | FARRELLS | G | H | K
creative thinking positive solutions | codigestion earthasia limited | MVA
DONNELL | LD ASIA | BMT

Project
PROJECT CONSULTANCY STUDY FOR WEST KOWLOON CULTURAL DISTRICT DEVELOPMENT PLAN

Title
BASELINE LANDSCAPE RESOURCES PHOTO RECORD (SHEET 16 OF 20)

Designed	Eng check
Drawn	Coordination
Dwg check	Approved
Scale at A3 NTS	Status
	Rev

Drawing Number
Figure 10.2p