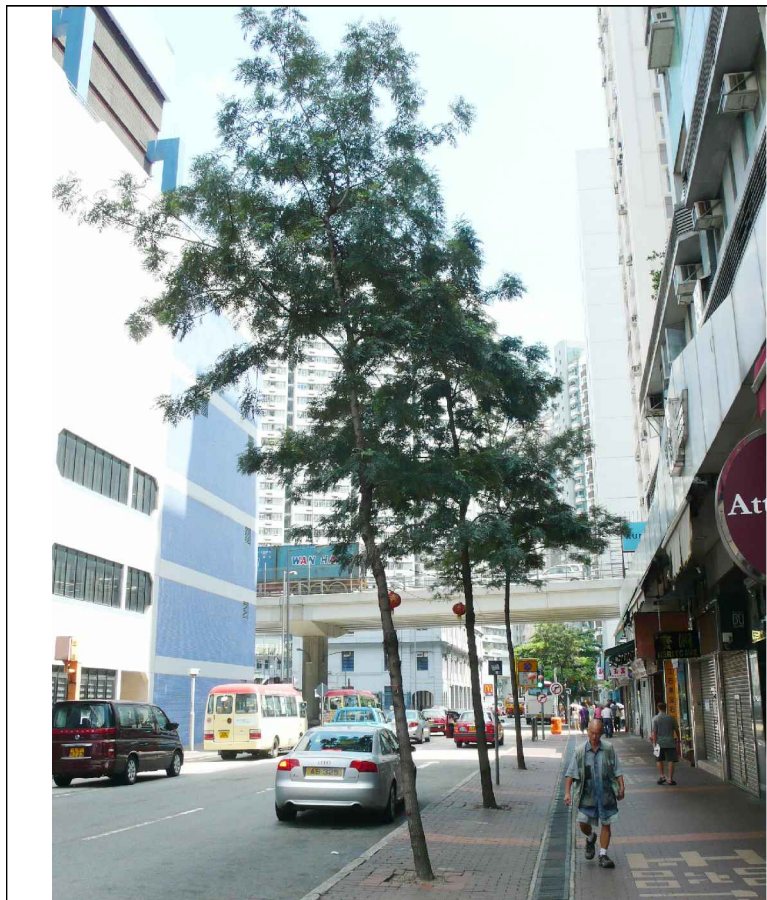
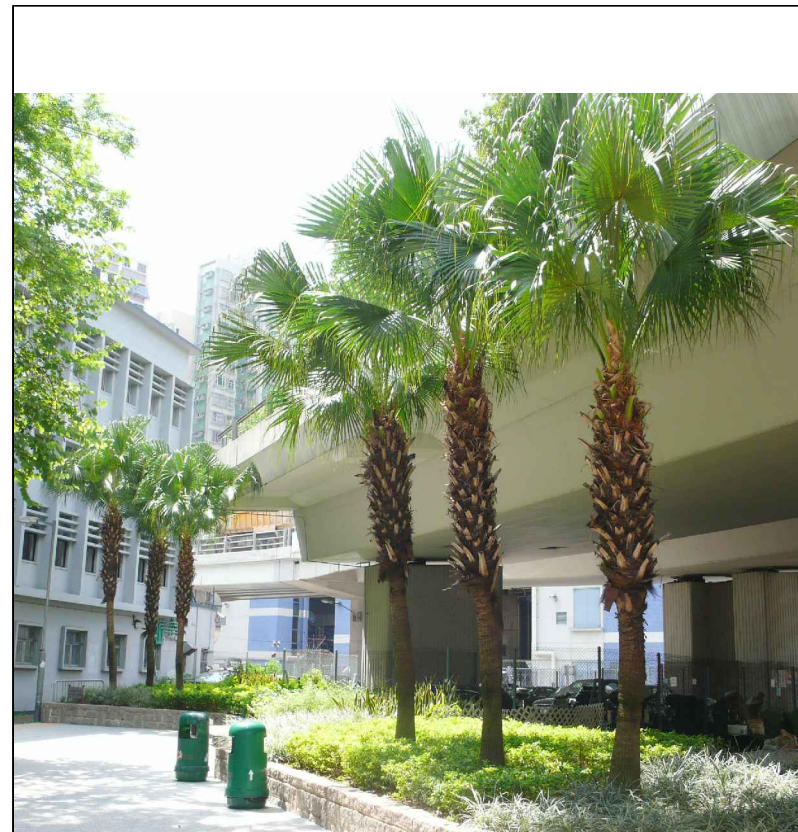




LR2.18 Roadside Trees at the junction of Kansu Street and Shanghai Street Photo 1



LR2.19 Roadside Trees along Canton Road (near Yau Ma Tei Police Station) Photo 1



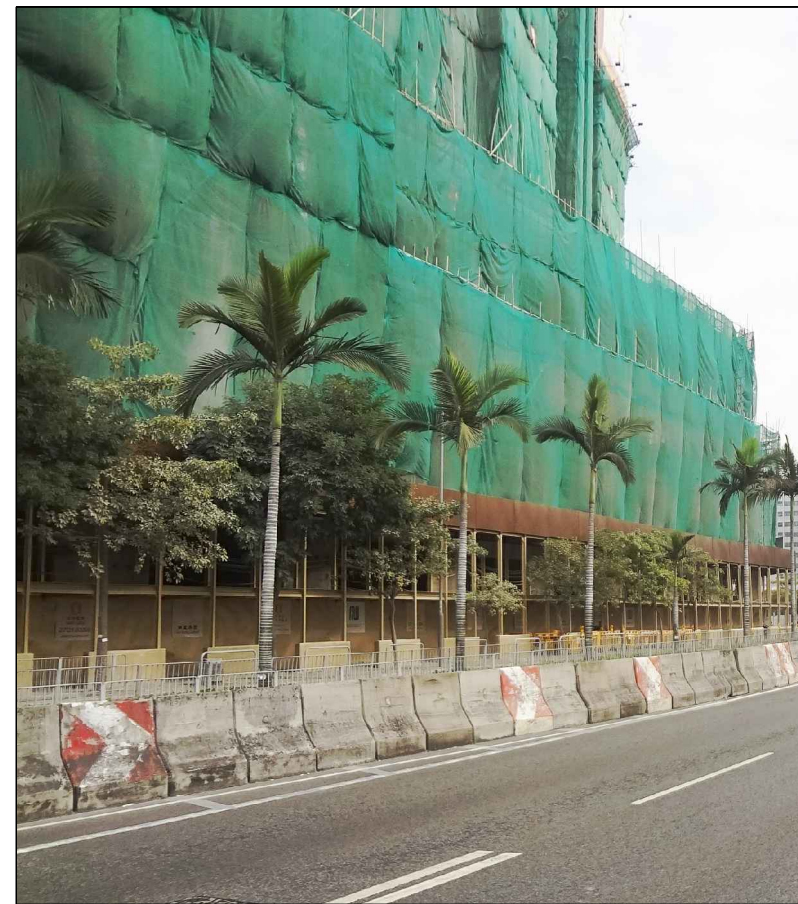
LR2.20 Amenity Planting next to Yau Ma Tei Police Station Photo 1



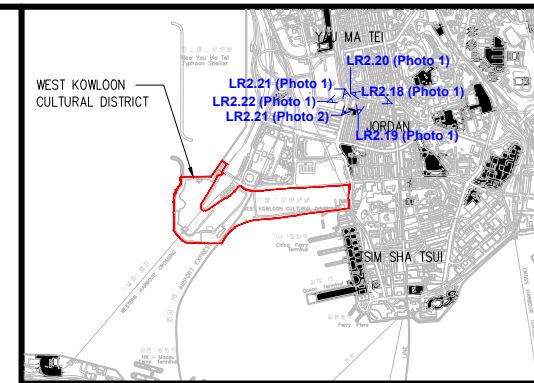
LR2.21 Roadside Trees along Ferry Street (near Yau Ma Tei Electric Substation) Photo 1



LR2.21 Roadside Trees along Ferry Street (near Yau Ma Tei Electric Substation) Photo 2



LR2.22 Roadside Trees along Yan Cheung Road Photo 1



KEY PLAN

Rev	Date	Drawn	Description	Scale	Unit

Client

WEST KOWLOON CULTURAL DISTRICT AUTHORITY



20/F Two Landmark East
180 How Ming Street
Kowloon, Kowloon
Hong Kong
T: +852 2500 6767
F: +852 2500 1658
W: www.mottmac.com.hk



Project
PROJECT CONSULTANCY STUDY FOR WEST KOWLOON CULTURAL DISTRICT DEVELOPMENT PLAN

Title
BASELINE LANDSCAPE RESOURCES PHOTO RECORD (SHEET 12 OF 20)

Designed		Eng check	
Drawn		Coordination	
Dwg check		Approved	
Scale at A3 NTS	Status	Rev	

Drawing Number
Figure 10.21