

PLOT BY: P:\Projects\NOLA\ERL\300\C_XRL\ENS\M53\228C.dgn
 MODEL NAME: P:\Projects\NOLA\ERL\300\C_XRL\ENS\M53\228C.dgn
 FILE NAME: P:\Projects\NOLA\ERL\300\C_XRL\ENS\M53\228C.dgn
 DATE: 2009-05-05
 USER: BDF

DRAWN	DXL
DESIGNED	TWF
CHECKED	KCC
APPROVED	PL
DATE	03/FEB/2009

EXPRESS RAIL LINK

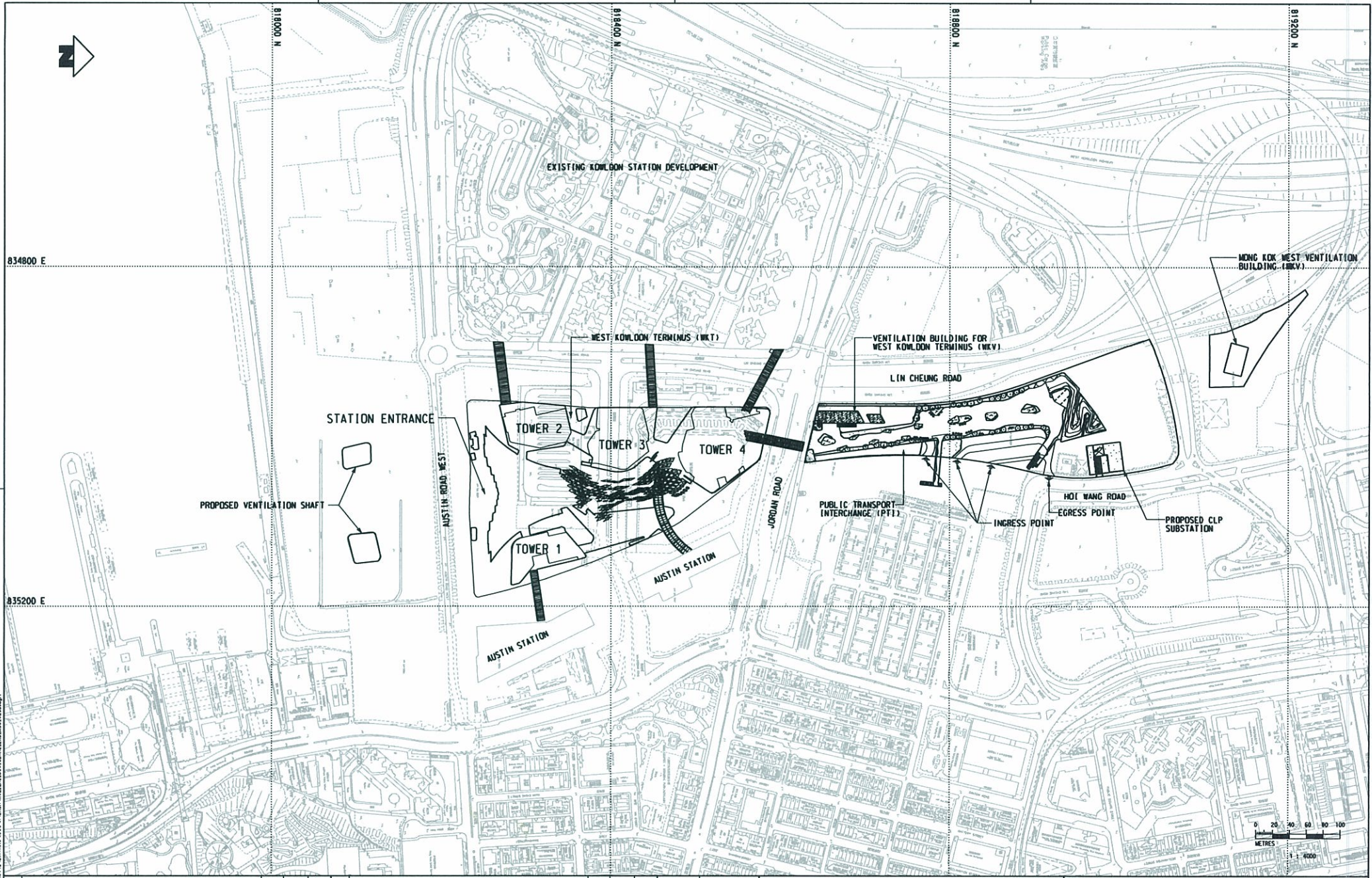
ORIGINATOR
 CADW. REF. NOL_ERL_300.C_XRL_ENS_M53_228C.dgn

TITLE		NOL / ERL-300 ENVIRONMENTAL IMPACT ASSESSMENT GEOLOGICAL PROFILE	
SCALE	1:1000 (A3)	FIGURE NO.	NOL/ERL/300/C/XRL/ENS/M53/228
REV.		REV.	C

REV	DESCRIPTION	BY	DATE	APPROVED	REV	DESCRIPTION	BY	DATE	APPROVED
A	FIRST ISSUE								
		KRW	JAN09						

Appendix 10.5 - Results of Chemical and Biological Screening

Sampling ID	Sampling Depth (m)	Metals and Metalloid (mg/kg)									µg/kg			µg/L	Category	Biological Screening Required?	Biological Screening Result	Disposal Option
		Ag	As	Cd	Cr	Cu	Ni*	Pb	Zn	Hg	Total PCBs	LMW PAHs	HMW PAHs	TBT*				
LCEL		1	12	1.5	80	65	40	75	200	0.5	23	550	1700	0.15				
UCEL		2	42	4	160	110	40	110	270	1	180	3160	9600	0.15				
10 x LCEL		10	120	15	800	650	400	750	2000	5	230	5500	17000	1.5				
Tunnel Alignment Section from Chainage 140+380 to 140+900 and Cut-and-Cover Works Areas for West Kowloon Terminus, Mong Kok Ventilation Building and Hoi Ting Road Construction Shaft																		
2108/XRL/EDH-3	15.5-16.4	<0.1	3	<0.2	15	6	8	9	463	<0.05	<3	<550	<1700	NT	Category H	No	-	Type 2
	16.5-17.4	0.1	4	<0.2	22	10	12	17	771	<0.05	<3	<550	<1700	NT	Category H	No	-	Type 2
	17.95-18.4	<0.1	2	<0.2	10	6	5	9	183	<0.05	<3	<550	<1700	NT	Category L	No	-	Type 1
2108/XRL/EDH-4	Drill log indicated no sediment															NA	-	NA
2108/XRL/EDH-5	13-13.9	0.6	8	0.2	36	49	21	33	169	0.14	<3	<550	<1700	NT	Category L	No	-	Type 1
	14-14.9	5.1	10	1.6	144	586	46	99	1380	1.18	<30	<550	<1700	NT	Category H	No	-	Type 2
	15-15.9	1.6	9	0.7	77	126	32	65	1830	0.65	<30	<550	<1700	NT	Category H	No	-	Type 2
	16-16.9	1.6	11	0.7	59	92	26	136	351	1.64	<30	<550	3500	NT	Category H	No	-	Type 2
2108/XRL/EDH-6	Drill log indicated no sediment															NA	-	NA
2108/XRL/EDH-10	12.9-13.8	<0.1	4	<0.2	39	8	27	18	177	<0.05	<3	<550	<1700	NT	Category L	No	-	Type 1
	13.9-14.8	<0.1	4	<0.2	40	8	27	20	89	<0.05	<3	<550	<1700	NT	Category L	No	-	Type 1
	16.9-17.8	<0.1	3	<0.2	34	8	20	24	65	<0.05	<3	<550	<1700	NT	Category L	No	-	Type 1
	19.9-20.8	0.1	14	<0.2	46	12	22	32	73	0.06	<3	<550	<1700	NT	Category M	Yes	Fail	Type 2
2108/XRL/EDH-20	14.4-15.3	<0.1	3	<0.2	27	7	18	18	86	<0.05	<3	<550	<1700	NT	Category L	No	-	Type 1
2108/XRL/EDH-21	15-15.9	5.7	9	1.5	146	530	50	106	1130	1.31	<30	<550	<1700	NT	Category H	No	-	Type 2
	15.9-16.8	3.5	10	0.9	110	175	38	110	421	1.67	<30	<550	2900	NT	Category H	No	-	Type 2
	16.9-17.8	2.3	8	0.7	87	180	42	86	286	0.66	<30	<550	<1700	NT	Category H	No	-	Type 2
	17.9-18.8	<0.1	4	<0.2	32	8	22	22	156	<0.05	<3	<550	<1700	NT	Category L	No	-	Type 1
2108/XRL/EDH-22	Drill log indicated no sediment															NA	-	NA
2108/XRL/EDH-23	Drill log indicated no sediment															NA	-	NA
2108/XRL/EDH-24	Drill log indicated no sediment															NA	-	NA
2108/XRL/EDH-25	14.45-15.35	<0.1	2	<0.2	3	1	3	5	55	<0.05	<3	<550	<1700	NT	Category L	No	-	Type 1
	15.45-16.35	<0.1	5	<0.2	40	11	27	24	146	<0.05	<3	<550	<1700	NT	Category L	No	-	Type 1
	16.45-17.35	<0.1	5	<0.2	40	12	28	24	110	<0.05	<3	<550	<1700	NT	Category L	No	-	Type 1
	17.45-18.35	<0.1	5	<0.2	42	12	29	33	328	<0.05	<3	<550	<1700	NT	Category H	No	-	Type 2
	20.45-21.35	<0.1	10	<0.2	42	11	22	30	186	0.05	<3	<550	<1700	NT	Category L	No	-	Type 1
2108/XRL/EDH-26	13.35-13.8	<0.1	3	<0.2	30	10	24	22	205	<0.05	<3	<550	<1700	NT	Category M	Yes	Fail	Type 2
	14.35-15.25	0.1	4	<0.2	34	7	24	19	78	<0.05	<3	<550	<1700	NT	Category L	No	-	Type 1
	15.35-16.25	<0.1	3	<0.2	31	8	26	20	90	<0.05	<3	<550	<1700	NT	Category L	No	-	Type 1
	18.35-19.25	<0.1	5	<0.2	37	11	26	28	143	<0.05	<3	<550	<1700	NT	Category L	No	-	Type 1
2108/XRL/EDH-45	12.2-13.15	4.3	12	1.3	141	327	45	189	856	1.8	<30	<550	4600	NT	Category H	No	-	Type 2
	13.2-14.15	0.5	14	0.2	35	48	21	210	563	3.74	<3	4000	29300	NT	Category H	Yes	Fail	Type 3*
	14.2-15.15	<0.1	4	<0.2	31	9	22	20	122	<0.05	<3	<550	<1700	NT	Category L	No	-	Type 1
	16.7-17.65	<0.1	5	<0.2	21	6	10	16	64	<0.05	<3	<550	<1700	NT	Category L	No	-	Type 1
	17.7-20.65	<0.1	3	<0.2	37	8	15	39	114	<0.05	<3	<550	<1700	NT	Category L	No	-	Type 1
2108/XRL/EDH-46	Drill log indicated no sediment															NA	-	NA
2108/XRL/EDH-47	21.10-21.55	0.1	8	<0.2	21	14	13	15	218	<0.05	<3	<550	<1700	NT	Category M	Yes	Fail	Type 2
2108/XRL/EDH-48	Drill log indicated no sediment															NA	-	NA
2108/XRL/EDH-49	Drill log indicated no sediment															NA	-	NA
2108/XRL/D038	13-13.9	<0.1	2	<0.2	3	2	2	3	375	<0.05	<3	<550	<1700	NT	Category H	No	-	Type 2
	13.9-14.8	0.3	6	<0.2	20	26	13	18	65	0.06	<3	<550	<1700	NT	Category L	No	-	Type 1
	14.9-15.8	<0.1	2	<0.2	4	2	2	4	474	<0.05	<3	<550	<1700	NT	Category H	No	-	Type 2
	16.35-16.8	<0.1	2	<0.2	6	3	3	6	400	<0.05	<3	<550	<1700	NT	Category H	No	-	Type 2
	18.9-19.8	<0.1	2	<0.2	4	1	4	6	174	<0.05	<3	<550	<1700	NT	Category L	No	-	Type 1
2108/XRL/AD020	Drill log indicated no sediment															NA	-	NA



PLOT DATE: 19/08/2008
 MODEL NAME: NOL_ERL_300_C_XRL_ENS_M50_023D.dgn
 FLOOR PLAN: 19/08/2008

DRAWN	YJP
DESIGNED	TWF
CHECKED	KCC
APPROVED	PL
DATE	19/AUG./2008

EXPRESS RAIL LINK
 |

TITLE
 NOL / ERL-300
 ENVIRONMENTAL IMPACT ASSESSMENT
 WEST KOWLOON TERMINUS AND PUBLIC TRANSPORT
 INTERCHANGE - SITE PLAN

SCALE
 1 : 4000 (A3)

FIGURE NO.
 NOL/ERL/300/C/XRL/ENS/M50/023

REV.
 D

REV	DESCRIPTION	BY	DATE	APPROVED	REV	DESCRIPTION	BY	DATE	APPROVED

NOL_ERL_300_C_XRL_ENS_M50_023D.dgn

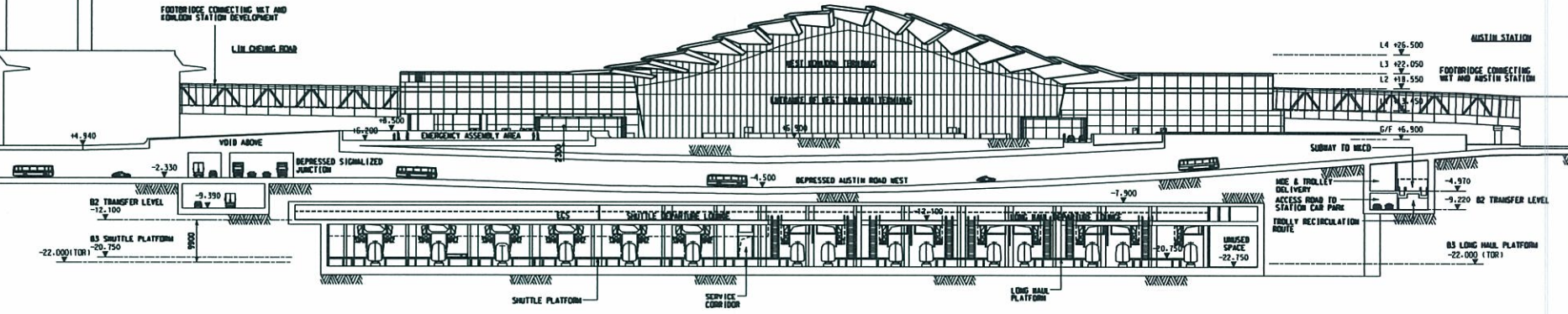
EXISTING KWLOON STATION DEVELOPMENT

FOOTBRIDGE CONNECTING MET AND KWLOON STATION DEVELOPMENT

LIN CHENG ROAD

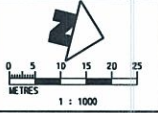
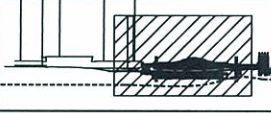
AUSTIN STATION

FOOTBRIDGE CONNECTING MET AND AUSTIN STATION



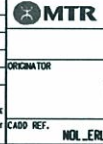
PLOT DRY: P:\autodesk\mtr\p\070707\ENR\M50\24A.dgn
 MODEL NAME: P:\p\070707\ENR\M50\24A.dgn
 PRINTED BY: TANER 2005-5-14 16:55:54
 FLDNAME: P:\p\070707\ENR\M50\24A.dgn

LEGEND:



REV	DESCRIPTION	BY	DATE	APPROVED	REV	DESCRIPTION	BY	DATE	APPROVED

DRAWN	ZCP
DESIGNED	THE
CHECKED	PTC
APPROVED	KC
DATE	07/MAY/2005

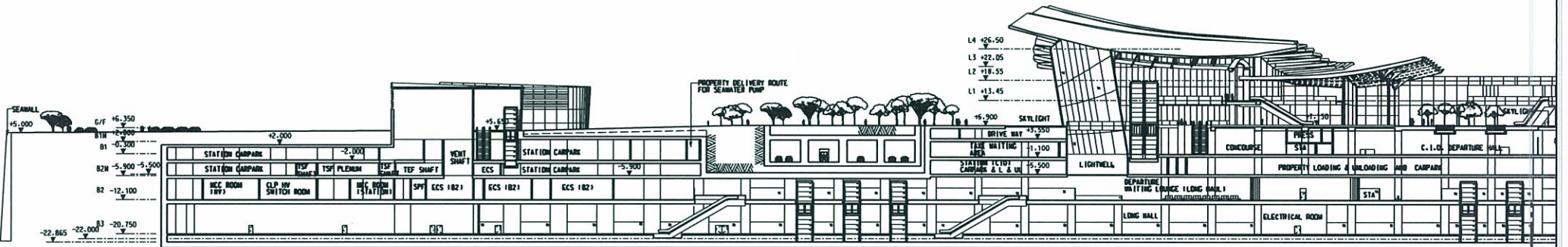


EXPRESS RAIL LINK
 ENSR | AECOM

TITLE
 NOL / ERL-300
 ENVIRONMENTAL IMPACT ASSESSMENT
 WEST KWLOON TERMINUS (CROSS SECTION)

SCALE 1 : 1000 (A3) FIGURE NO. NDL/ERL/300/C/XRL/ENS/M50/024 REV. A

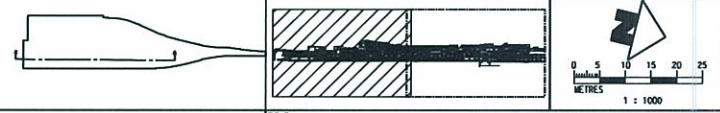
ORIGINATOR
 CADW. REF.
 NDL_ERL_300_C_XRL_ENS_M50_024A.dgn



MATCH LINE FOR CONSULTANTS SEE DWG. NOL/ERL/300/C/XRL/ENS/M50/025

PLOT DWG: R:\projects\NOL\ERL\300\C\XRL\ENS\M50\025.dgn
 MODEL NAME: P:\projects\NOL\ERL\300\C\XRL\ENS\M50\025.dgn
 FILE NAME: P:\projects\NOL\ERL\300\C\XRL\ENS\M50\025.dgn

LEGEND:



REV	DESCRIPTION	BY	DATE	APPROVED	REV	DESCRIPTION	BY	DATE	APPROVED

DRAWN	ZCP
DESIGNED	TWF
CHECKED	PTC
APPROVED	KC
DATE	07/MAY/2009

MTR

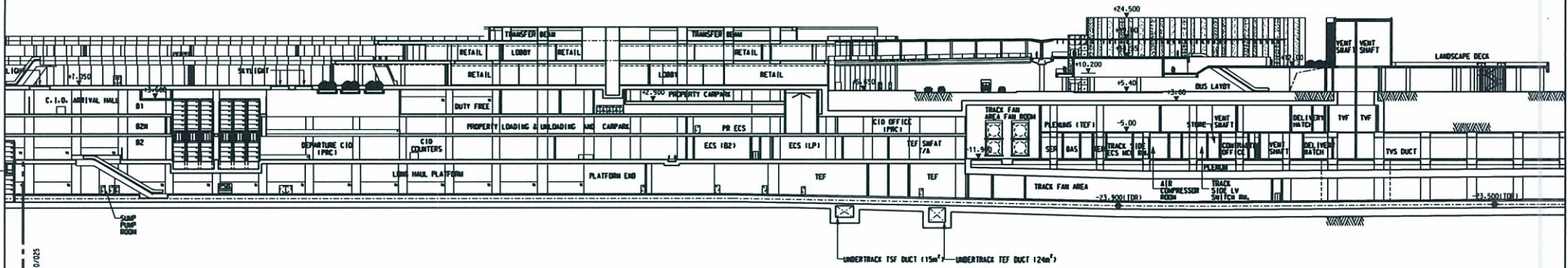
EXPRESS RAIL LINK

ENSR | AECOM

ORIGINATOR

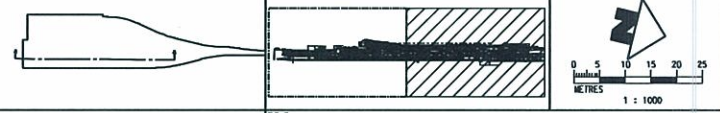
CAADO REF. NOL_ERL_300_C_XRL_ENS_M50_025A.dgn

TITLE		REV.
NOL / ERL-300 ENVIRONMENTAL IMPACT ASSESSMENT WEST KOWLOON TERMINUS (LONG SECTION)		A
SCALE	FIGURE NO.	REV.
1 : 1000 (A3)	NOL/ERL/300/C/XRL/ENS/M50/025	A

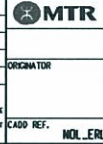


MATCH LINE
FOR CONTINUATION
SEE DWG. NOL/ERL/300/C/XRL/ENS/M50/026

LEGEND:



DRAWN	ZCP
DESIGNED	TWF
CHECKED	PTC
APPROVED	KC
DATE	07/MAY/2009



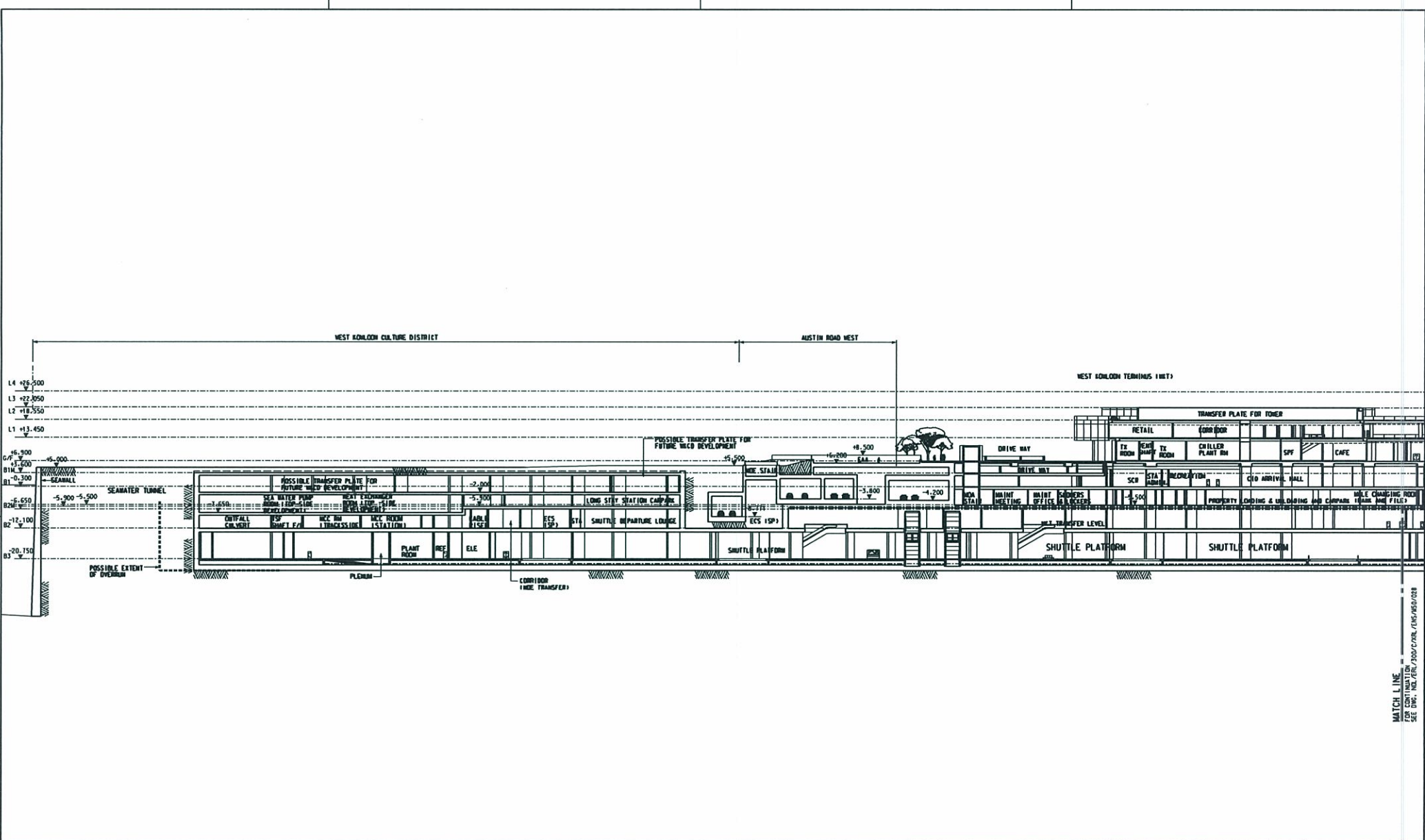
EXPRESS RAIL LINK
ENSR | AECOM

TITLE	
NOL / ERL-300 ENVIRONMENTAL IMPACT ASSESSMENT WEST KOWLOON TERMINUS (LONG SECTION)	
SCALE	FIGURE NO.
1 : 1000 (A3)	NOL/ERL/300/C/XRL/ENS/M50/026
REV:	A

REV	DESCRIPTION	BY	DATE	APPROVED	REV	DESCRIPTION	BY	DATE	APPROVED

PLOT DWN: R:\M1004\NTR\01\DRIVER\M005\AS COLOUR.DWG
 MODEL NAME: 2005-5-14 M50/026
 FILE NAME: P:\PROJECTS\026\026\DRAWING\000\01\ERL\NOL/ERL/300/C/XRL/ENS/M50/026.dwg

ORIGINATOR: ENSR | AECOM
 CADD REF: NOL/ERL/300/C/XRL/ENS/M50/026A.dgn



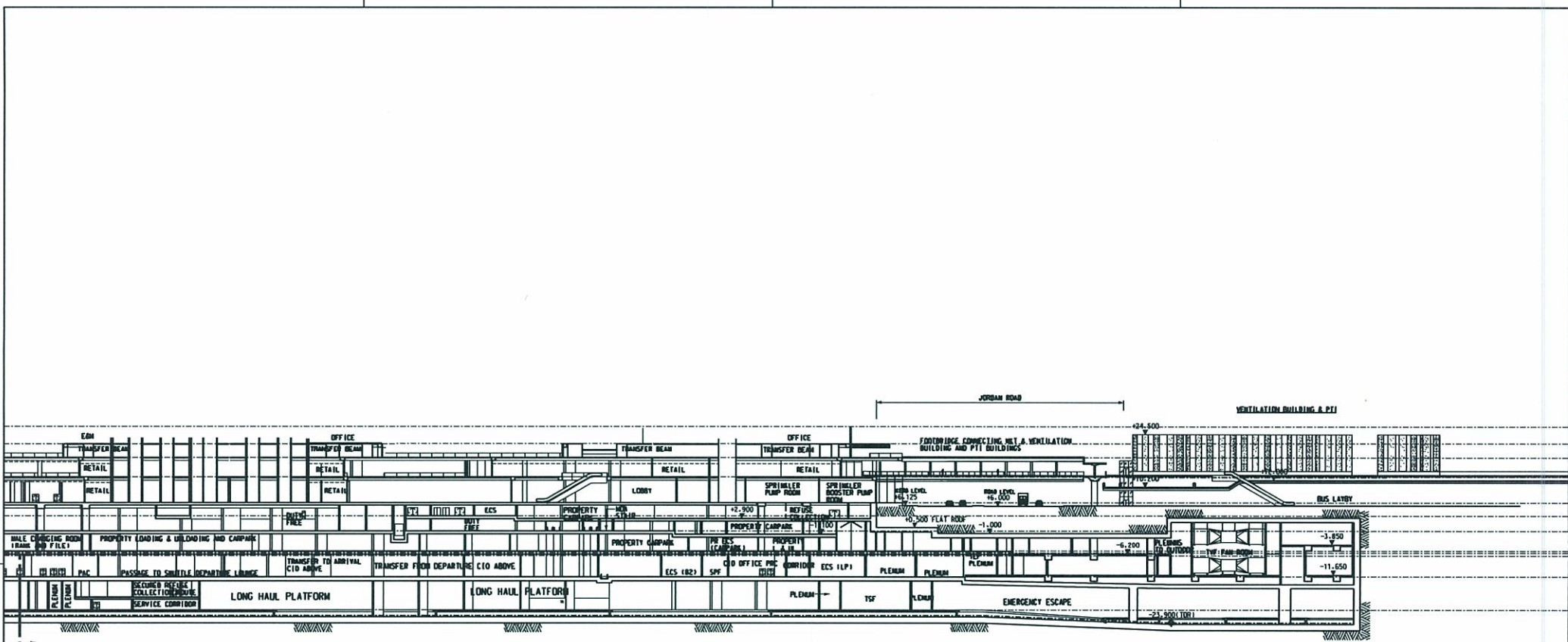
PLOT DWT: R:\projects\mtr\p020708\mtr\027a.dgn
 MODEL NAME: MTR_300_C_XRL_ENS_M50_027A.dgn
 PLOT DATE: 2009-04-18
 PLOT BY: MJC
 PLOT SCALE: 1:1000
 PLOT ORIGINATOR: ENSR/AECOM

MATCH LINE
 FOR CONTINUATION
 SEE DWG. NOL/ERL/300/C/XRL/ENS/M50/028



REV	DESCRIPTION	BY	DATE	APPROVED	REV	DESCRIPTION	BY	DATE	APPROVED

DRAWN	YJP		EXPRESS RAIL LINK ENSR AECOM
DESIGNED	TWF		
CHECKED	PTC		
APPROVED	KC		
DATE	07/MAY/2009	ORIGINATOR	
<small> THIS DRAWING IS THE PROPERTY OF ENSR/AECOM. IT IS TO BE USED ONLY FOR THE PROJECT AND SITE SPECIFICALLY IDENTIFIED IN THE TITLE. NO PART OF THIS DRAWING IS TO BE REPRODUCED OR TRANSMITTED IN ANY FORM OR BY ANY MEANS, ELECTRONIC OR MECHANICAL, INCLUDING PHOTOCOPYING, RECORDING, OR BY ANY INFORMATION STORAGE AND RETRIEVAL SYSTEM, WITHOUT THE WRITTEN PERMISSION OF ENSR/AECOM. </small>			
<small> CADW. REF. NOL_ERL_300_C_XRL_ENS_M50_027A.dgn </small>			<small> TITLE NOL / ERL-300 ENVIRONMENTAL IMPACT ASSESSMENT WEST KOOLLOON TERMINUS (LONG SECTION) </small>
<small> SCALE 1 : 1000 (A3) </small>			<small> FIGURE NO. NOL/ERL/300/C/XRL/ENS/M50/027 </small>
<small> REV. A </small>			<small> REV. A </small>

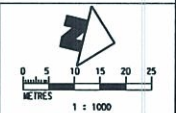
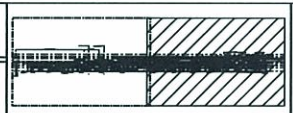
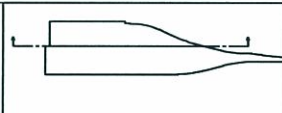


MATCH LINE
FOR CONTINUATION
SEE DWG. NOL/ERL/300/C/XRL/ENS/M50/028

PLOT DIR: P:\work\mtr\p10\erl\m50\28\1301.dwg
MODEL NAME: P:\work\mtr\p10\erl\m50\28\1301.dwg
FILE NAME: P:\work\mtr\p10\erl\m50\28\1301.dwg
DATE: 2009-5-14 16:56:08
SCALE: 1:1000

LEGEND:

[Symbol]	[Symbol]	[Symbol]	[Symbol]	[Symbol]	[Symbol]	[Symbol]
[Symbol]	[Symbol]	[Symbol]	[Symbol]	[Symbol]	[Symbol]	[Symbol]



<table border="1"> <tr><td>DRAWN</td><td>YJP</td></tr> <tr><td>DESIGNED</td><td>THF</td></tr> <tr><td>CHECKED</td><td>PTC</td></tr> <tr><td>APPROVED</td><td>IC</td></tr> <tr><td>DATE</td><td>07/MAY/2009</td></tr> </table>				DRAWN	YJP	DESIGNED	THF	CHECKED	PTC	APPROVED	IC	DATE	07/MAY/2009			<p>TITLE NOL / ERL-300 ENVIRONMENTAL IMPACT ASSESSMENT WEST KOWLOON TERMINUS (LONG SECTION)</p>							
DRAWN	YJP																						
DESIGNED	THF																						
CHECKED	PTC																						
APPROVED	IC																						
DATE	07/MAY/2009																						
<table border="1"> <tr><td>BY</td><td>DATE</td><td>APPROVED</td><td>BY</td><td>DATE</td><td>APPROVED</td></tr> <tr><td> </td><td> </td><td> </td><td> </td><td> </td><td> </td></tr> </table>				BY	DATE	APPROVED	BY	DATE	APPROVED							<p>ORIGINATOR ENSR AECOM</p>		<p>SCALE 1 : 1000 (A3)</p>		<p>FIGURE NO. NOL/ERL/300/C/XRL/ENS/M50/028</p>		<p>REV: A</p>	
BY	DATE	APPROVED	BY	DATE	APPROVED																		
<p>CAADO REF. NOL_ERL_300_C_XRL_ENS_M50_028A.dgn</p>						<p>DESCRIPTION</p>																	

