
MATERIALAB CONSULTANTS LIMITED

Fugro Development Centre,
5 Lok Yi Street,
17 M.S. Castle Peak Road,
Tai Lam, Tuen Mun, N.T., Hong Kong.

Tel : (852)-24508238
Fax : (852)-24508032
Email : mcl@fugro.com.hk

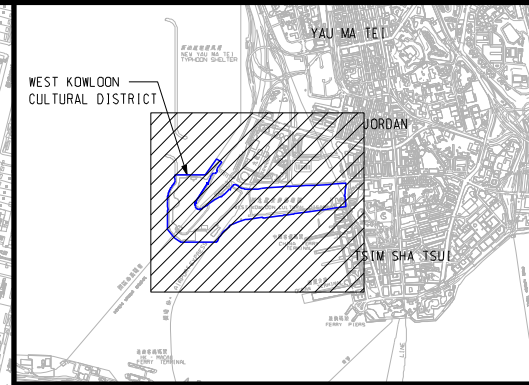
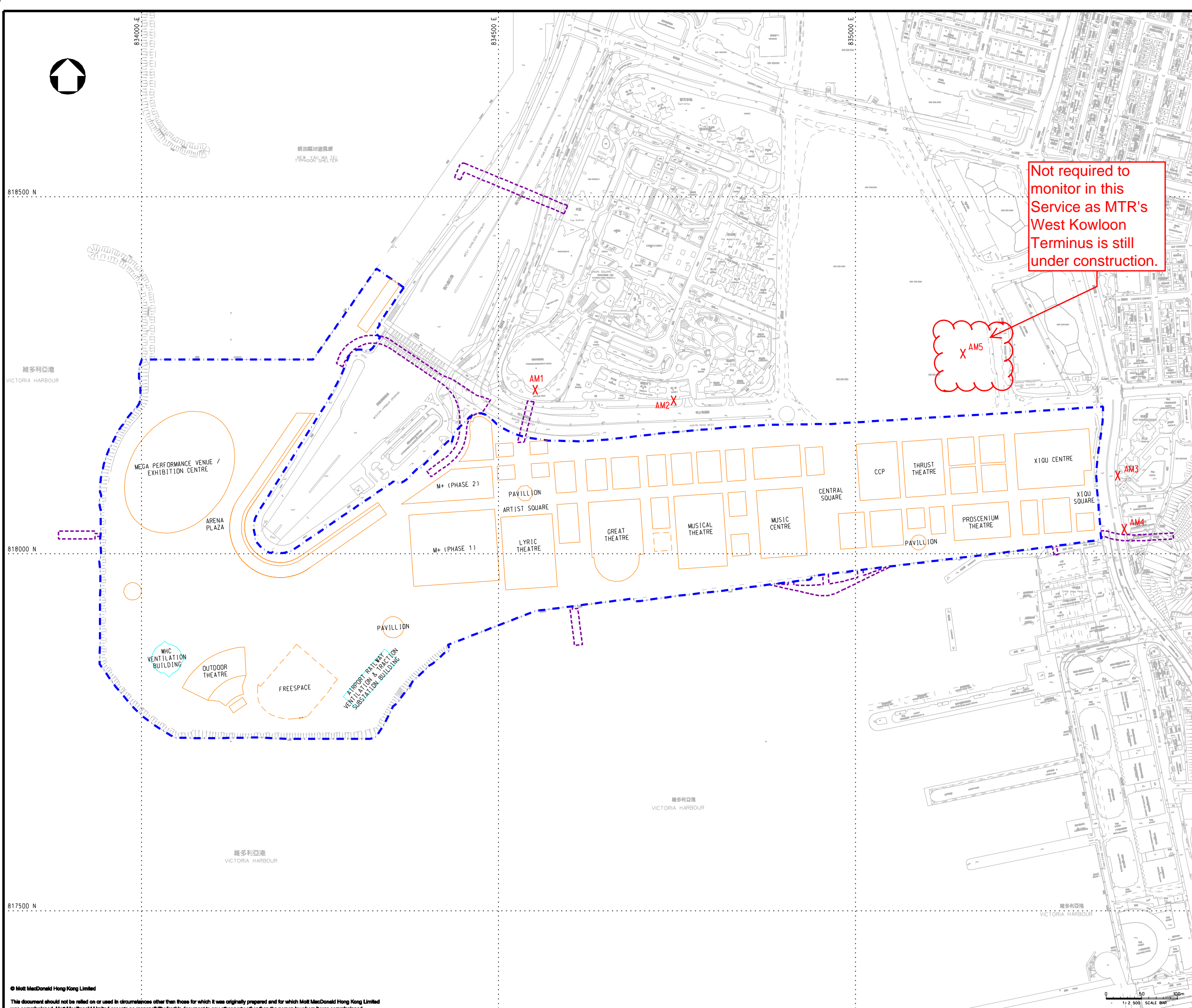


MaterialLab

Report No.: 0125/14/ED/0056G

Appendix D

Locations of the Baseline Monitoring Stations



KEY PLAN

- LEGEND:**
- PROJECT BOUNDARY
 - EXTERNAL CONNECTIONS (INDICATIVE SUBJECT TO FUTURE DESIGN & ARRANGEMENT)
 - PROPOSED FOOTPRINT BOUNDARY
 - EXISTING FACILITIES
 - CONSTRUCTION AIR MONITORING STATIONS

Rev	Date	Drawn	Description	Ch'kd	App'd
P4	JUN 13	MING	GENERAL REVISION	AM	AFK
P3	MAY 13	MING	GENERAL REVISION	EY	AFK
P2	MAR 13	MING	GENERAL REVISION	AM	AFK
P1	AUG 12	MING	FIRST ISSUE	AM	AFK

Client
WEST KOWLOON CULTURAL DISTRICT AUTHORITY

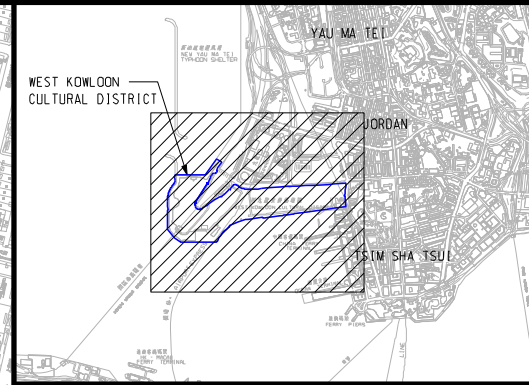
20/F Two Landmark East
100 How Ming Street
Kowloon, Kowloon
Hong Kong
T +852 2828 5757
F +852 2827 1823
www.mottmac.com.hk

Project
PROJECT CONSULTANCY STUDY FOR WEST KOWLOON CULTURAL DISTRICT DEVELOPMENT PLAN

Title
PROPOSED LOCATIONS OF CONSTRUCTION AIR MONITORING STATIONS

Designed	HC	Eng check	ST
Drawn	MING	Coordination	EC
Dwg check	HC	Approved	AFK
Scale at A1	1:2500	Status	PRE
Rev			P4

Drawing Number **FIGURE 2.1**



KEY PLAN

- LEGEND:
- PROJECT BOUNDARY
 - EXTERNAL CONNECTIONS (INDICATIVE SUBJECT TO FUTURE DESIGN & ARRANGEMENT)
 - PROPOSED FOOTPRINT BOUNDARY
 - EXISTING FACILITIES
 - CONSTRUCTION NOISE MONITORING STATIONS

P4	JUN 13	MING	GENERAL REVISION	AM	AFK
P3	MAY 13	MING	GENERAL REVISION	EY	AFK
P2	MAR 13	MING	GENERAL REVISION	AM	AFK
P1	AUG 12	MING	FIRST ISSUE	AM	AFK
Rev	Date	Drawn	Description	Ch'kd	App'd

Client
WEST KOWLOON CULTURAL DISTRICT AUTHORITY

20/F Two Landmark East
100 How Ming Street
Kowloon, Kowloon
Hong Kong
T +852 2828 5757
F +852 2827 1823
www.mottmac.com.hk

Project
PROJECT CONSULTANCY STUDY FOR WEST KOWLOON CULTURAL DISTRICT DEVELOPMENT PLAN

Title
PROPOSED LOCATIONS OF CONSTRUCTION NOISE MONITORING STATIONS

Designed	SC	Eng check	ST
Drawn	MING	Coordination	EC
Dwg check	SC	Approved	AFK
Scale at A1	1:2500	Status	PRE
Drawing Number		Rev	P4

FIGURE 3.1

The Arch, Star Tower - Reference monitoring station of XRL Baseline Monitoring

Monitoring at NM1 and NM2 was not conducted during monitoring period due to objections from properties owners.

